

MANAL CHANGE SHEET
FOR
MODEL 995

AUGUST, 1989
CN # ORT-6

The following corrections / additions are noted to the schematic drawing located at the end of this manual:

1. Value for R35, R45, and R46 is 1k Ohms, not 4.7k Ohms.
2. Value for R54 and R59 has been changed from 100k Ohms to 51k Ohms.
3. Capacitors C54 and C55 are no longer used.
4. D6 has been mislabeled as D65 (near U47B).
5. C45 has been mislabeled as C46 (near U47B), and value is 0.01 uF, not 0.002 uF.
6. R58 has been mislabeled as R52 (near U47B).
7. Value of C44 is 0.01 uF, not 0.002 uF.
8. C57 (0.01 uF) has been added between U45 pin 2 and ground.
9. C58 (0.001 uF) has been added between U17 pin 13 and ground.

Model 995
Dual Counter
Operating Manual

This manual applies to instruments marked
"Rev 05" on rear panel

The following revision applies to:

99X-1	"Rev 04"
99X-2	"Rev 04"
99X-3	"Rev 03"
99X-4	"Rev 01"

CONTENTS

	Page
WARRANTY	v
PHOTOGRAPHS	vi
1. DESCRIPTION	1
2. SPECIFICATIONS	2
2.1. Performance	2
2.2. Indicators	2
2.3. Controls	2
2.4. Inputs	2
2.5. Outputs	2
2.6. Interfaces	2
2.7. Electrical and Mechanical	3
2.8. Ordering Information	3
3. INSTALLATION	4
3.1. Input Polarity Selection	4
3.2. General	4
3.3. Connection to Power	4
3.4. Signal Connections	5
3.5. Output Connections	5
3.6. Operation	5
4. OPTIONS FOR THE MODEL 995	6
4.1. RS-232-C Interface	6
4.2. IEEE-488 (GPIB) Interface	8
4.3. Print Loop Interface	10
4.4. Internal +6 V Supply Option	11
5. PROGRAMMING THE 995	12
5.1. RS-232-C Interface	12
5.2. Interfacing to the IEEE-488 BUS	13
APPENDIX A. ASCII COMMANDS TO THE MODULE	A1
A.1. Command Words	A1
A.2. Data Values	A1
A.3. Checksums	A1
A.4. Response from the Module	A1
A.5. Time Units Used in Commons	A1
A.6. Catalog of Commands for the 995	A1
APPENDIX B. RESPONSE RECORDS FROM THE 995 MODULE	B1
B.1. Delimiting Characters	B1
B.2. Percent Response Records	B1
B.3. Dollar Response Records	B2
APPENDIX C. OPTIONAL PARTS LIST	C1
C.1. Cables and Connectors	C1
C.2. Ordering Information	C1

ILLUSTRATIONS

Fig. 1. Setting Polarity on W5 and W6 Select Counter Source	4
Fig. 2. Changing Jumpers on the 99X-1 RS-232-C Interface Board	7
Fig. 3. Address Selection of DIP Switch on the 99X-2 IEEE-488 Interface Board	9
Fig. 4. Selecting Operating Modes on the 99X-3 Print Loop Interface Board	10
Fig. 5. Serial Poll Status Byte	14

Standard Warranty

for

EG&G ORTEC Nuclear Electronic Instruments

EG&G ORTEC warrants that the items will be delivered free from defects in material or workmanship. EG&G ORTEC makes no other warranties, express or implied, and specifically **NO WARRANTY OF MERCHANTABILITY OR FITNESS FOR A PARTICULAR PURPOSE.**

EG&G ORTEC's exclusive liability is limited to repairing or replacing at EG&G ORTEC's option, items found by EG&G ORTEC to be defective in workmanship or materials within **two years** from the date of delivery. EG&G ORTEC's liability on any claim of any kind, including negligence, loss or damages arising out of, connected with, or from the performance or breach thereof, or from the manufacture, sale, delivery, resale, repair, or use of any item or services covered by this agreement or purchase order, shall in no case exceed the price allocable to the item or service furnished or any part thereof that gives rise to the claim. In the event EG&G ORTEC fails to manufacture or deliver items called for in this agreement or purchase order, EG&G ORTEC's exclusive liability and buyer's exclusive remedy shall be release of the buyer from the obligation to pay the purchase price. In no event shall EG&G ORTEC be liable for special or consequential damages.

Quality Control

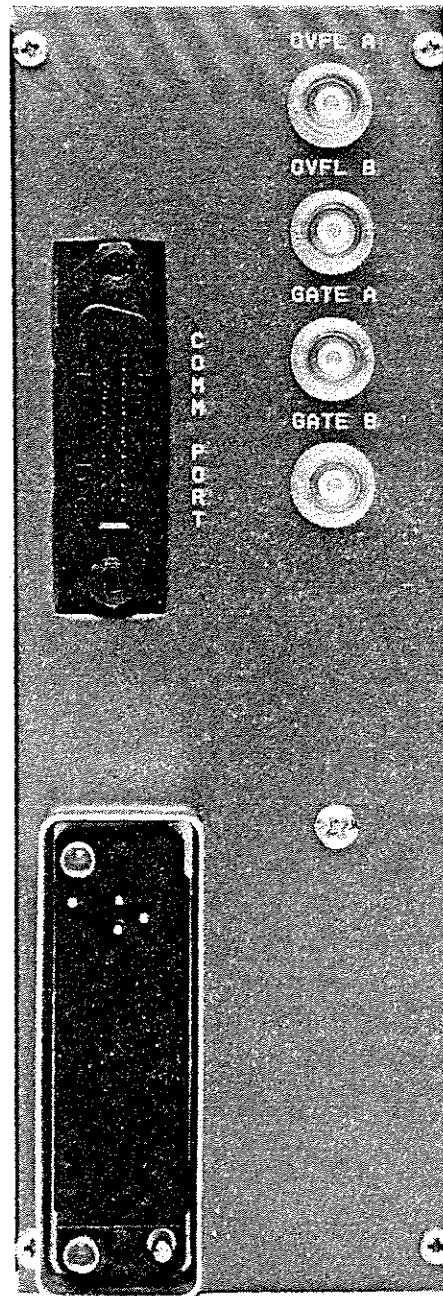
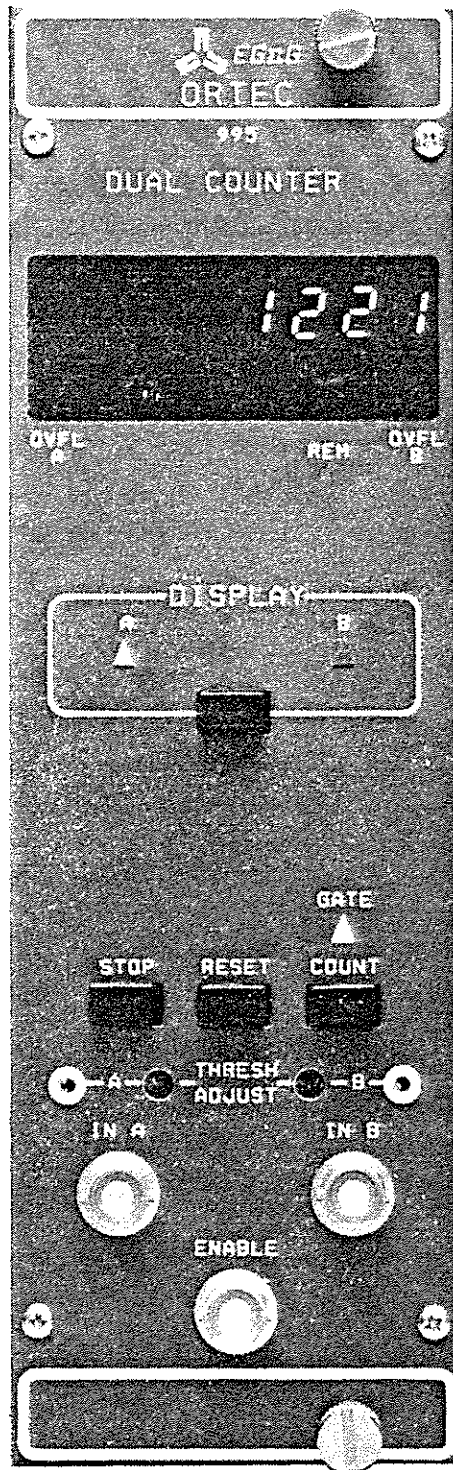
Before being approved for shipment, each EG&G ORTEC nuclear electronic instrument must pass a stringent set of quality control tests designed to expose any flaws in materials or workmanship. Permanent records of these tests are maintained for use in warranty repair and as a source of statistical information for design improvements.

Repair Service

If it becomes necessary to return this instrument for repair, it is essential that Customer Services be contacted in advance of its return so that a Return Authorization Number can be assigned to the unit. Also, EG&G ORTEC must be informed, either in writing, by telephone [(615) 482-4411] or by telex (55-7450) of the nature of the fault of the instrument being returned and of the model, serial, and revision ("Rev" on rear panel) numbers. Failure to do so may cause unnecessary delays in getting the unit repaired. The EG&G ORTEC standard procedure requires that instruments returned for repair pass the same quality control tests that are used for new-production instruments. Instruments that are returned should be packed so that they will withstand normal transit handling and must be shipped **PREPAID** via Air Parcel Post or United Parcel Service to the nearest EG&G ORTEC repair center. (In the case where the instrument did not function upon purchase, EG&G ORTEC will pay shipment costs both ways.) The address label and the package should include the Return Authorization Number assigned. Instruments being returned that are damaged in transit due to inadequate packing will be repaired at the sender's expense, and it will be the sender's responsibility to make claim with the shipper. Instruments not in warranty will be repaired at the standard charge unless they have been grossly misused or mishandled, in which case the user will be notified prior to the repair being done. A quotation will be sent with the notification.

Damage in Transit

Shipments should be examined immediately upon receipt for evidence of external or concealed damage. The carrier making delivery should be notified immediately of any such damage, since the carrier is normally liable for damage in shipment. Packing materials, waybills, and other such documentation should be preserved in order to establish claims. After such notification to the carrier, please notify EG&G ORTEC of the circumstances so that assistance can be provided in making damage claims and in providing replacement equipment if necessary.



EG&G ORTEC MODEL 995 DUAL COUNTER

1. DESCRIPTION

The EG&G ORTEC Model 995 Dual Counter incorporates two 8-decade counters and an 8-decade LED display which offers instantaneous visual readout of the full contents of Counter A or B, even in a dimly lighted room. By adding field-installable options, considerably enhanced readout and control capabilities can be incorporated.

The full power of CCNIM™ (Computer-Controlled NIM) can be obtained by adding the IEEE-488 option or the RS-232-C option. These plug-in boards yield computer control of all functions normally selectable from the front panel, including start and stop count, readout, reset, and selecting the displayed counter. To eliminate accidental operator interference, the computer can disable all front-panel controls in the Remote mode. Computer readout with either of the two CCNIM™ options includes A and B counts, and which counter is being displayed. The IEEE-488 option also reads the overflow status for both counters. Implementation of the IEEE-488 interface in the Model 995 is compatible with the NIM/GPIB standard.* The CCNIM options can directly drive printers having RS-232-C or IEEE-488 ports.

For automated counting applications not requiring computer interfacing the standard EG&G ORTEC print loop function is available as a field-installable, plug-in board. In conjunction with an EG&G ORTEC Model 777A Printer this option offers automatic recycling of the counting and printing of all 8 digits of the contents of Counters A and B along with other counters in the print loop. Instead of the 777A, the EG&G ORTEC Model 879 Buffered Interface can be used to provide IEEE-488 and RS-232-C interfaces for all the counters in the print loop. The Model 879 has the capability, through the print loop, to start and stop counting, reset, and read the contents of Counters A and B in the Model 995 along with the other counters in the print loop.

The inputs to Counters A and B are individually selectable as either positive or negative sensing inputs by changing the Input Polarity Jumpers on the counter printed wiring board (PWB). The negative input mode is designed to accept standard NIM, fast-negative logic pulses with a fixed threshold of -250 mV on a 50-Ω input impedance. The negative inputs can handle counting rates up to 100 MHz. The positive input mode can accept counting rates up to 25 MHz on a 1000-Ω input impedance. To enhance the

flexibility of the positive input mode, precision discriminators are included on both counters. The discriminator thresholds are variable over the range of +100 mV to +9.5 V using front-panel, 25-turn trimpots. The thresholds can be adjusted to suit the amplitude of a specific source of logic pulses or used as precision integral discriminators on analog pulses. For the latter application, the TTL logic outputs of the discriminators are provided as test points on the front panel. These outputs can be used to trigger an oscilloscope while viewing the analog signal at the counter input on the oscilloscope. The oscilloscope trace will show the signals that are being counted by the Model 995, thus permitting a very selective adjustment of the threshold.

All the commonly used functions are conveniently accessible on the front panel. Manual control of the Count, Stop, and Reset functions is via three push buttons. The Gate LED is illuminated when the Model 995 is enabled to count. The Display push button switches the display to show the contents of Counter A, or the contents of Counter B. The display contains LED flags to indicate whether to warn when overflows have occurred in Counter A or Counter B, and to advise when the front-panel controls are disabled by the computer in the Remote mode.

The counting function of the entire module can be disabled by holding the Enable input below +1.5 V using an external signal source. This condition also turns off the Gate LED. Open circuit or >+3 V at the Enable input allows the instrument to count, if the Count mode has been activated. The Interval output of another EG&G ORTEC timer can perform this function to synchronize the Model 995 counting with the other timer. The Interval outputs on all EG&G ORTEC timers provide nominally +5 V when counting and <+0.5 V when counting is inhibited.

Independent gating of the A and B Counter inputs can be achieved with the Gate A and Gate B inputs on the rear panel. Interface connectors for the IEEE-488, RS-232-C, and print loop options are also located on the rear panel. Each counter has a rear panel output dedicated to signaling overflows. Counting these overflows on another counter extends the counting capacity of the Model 995.

The Model 995 derives its power from the ±12 V and +6 V supplies in a standard NIM bin with power supply. For bins that do not contain a +6 V supply an Internal +6 V Supply option is available. This option is field-installable and derives its power from the 117 V ac lines in the bin.

*"STANDARD NIM DIGITAL BUS (NIM/GPIB)", DOE/ER-0173, U.S. NIM committee, August 1983; "IEEE Standard Digital Interface for Programmable Instrumentation," ANSI/IEEE Std 488-1978, The Institute of Electrical and Electronics Engineers, 345 East 47 Street, New York, NY 10017; and "Codes and Format Conventions for Use with ANSI/IEEE Std 488-1978," ANSI/IEEE Std 728-1982, The Institute of Electrical and Electronics Engineers, 345 East 47 Street, New York, NY 10017.

2. SPECIFICATIONS

2.1. PERFORMANCE

COUNT CAPACITY 8 decades for counts ranging from 0 to 99,999,999 in each of 2 counters.

MAXIMUM COUNTING RATE 100 MHz for negative inputs, 25 MHz for positive inputs.

POSITIVE INPUT DISCRIMINATOR Threshold variable from +100 mV to +9.5 V with a 25-turn trimpot.

PULSE PAIR RESOLUTION <10 ns for negative inputs; <40 ns for positive inputs.

2.2. INDICATORS

COUNTER DISPLAY 8-digit, 7-segment LED display with leading zero suppression.

OVERFLOW INDICATORS LED indicators labeled Ovfl A and Ovfl B illuminate when the corresponding A or B Counter exceeds its capacity of 8 decades. The indicator remains on until a reset is generated.

DISPLAY 2 LEDs labeled A and B indicate the information being displayed in the counter display. Counter A or Counter B may be displayed by repeatedly pressing the Display push button until the desired LED is illuminated.

GATE A single LED indicates that the entire instrument is enabled to count. For the Gate LED to be illuminated the module must be placed in the Count mode (either manually or via the interface option), the Enable input must be above +3 V.

REMOTE A single LED labeled Rem indicates that the 995 is under computer control, and all front-panel controls are disabled. This mode is set by the ENABLE _ REMOTE command.

2.3. CONTROLS

DISPLAY Push button selects the contents of Counter A or B for presentation in the 8-decade display. Repeatedly pushing the button cycles the selection through the two choices as indicated by the A and B LEDs.

STOP This push button stops all sections of the instrument from counting.

RESET Depressing this button resets both counters to zero counts and turns off both overflow indicators. When power is turned on to the module a Reset is automatically generated.

COUNT Pushing this button enables the counting condition for the entire instrument providing the Enable input is not held below +1.5 V and the preset value has not been reached.

THRESH ADJUST (A and B) Front-panel mounted, 25-turn trimpots to adjust the positive input thresholds for Counters A and B. The range is from +100 mV to +9.5 V.

Adjacent test points provide the TTL logic signal outputs from the discriminators to facilitate adjustment using an oscilloscope.

INPUT POLARITY JUMPERS Two jumpers located on the printed wiring board (PWB) separately select the desired input polarities for inputs In A and In B. P = positive, N = negative.

2.4. INPUTS

IN A

Positive Input Front-panel BNC connector for Counter A accepts positive unipolar signals; minimum width above threshold, 20 ns at a 50% duty cycle. The threshold is adjustable from +100 mV to +9.5 V via a front-panel, 25-turn trimpot. $Z_{in} = 1000 \Omega$ to ground; dc coupled.

Negative Input Changing the Input Polarity Jumper position on the counter board permits selection of the fast-negative logic input which is designed to accept -600 to -1800 mV pulses with a fixed discriminator threshold of -250 mV. $Z_{in} = 50 \Omega$; dc coupled. Minimum pulse width above threshold is 4 ns.

IN B Identical to In A except that it feeds Counter B.

ENABLE Front-panel BNC input connector accepts NIM standard, slow-positive logic pulses to control the counting condition of the entire module. A level of >+3 V or open circuit allows counting provided the instrument is in the Count mode and has not reached the preset value; <+1.5 V inhibits counting. The driving source must be capable of sinking 5 mA of positive current during inhibit; input protected to +25 V.

GATE A Rear-panel BNC input is identical to the Gate B input.

GATE B Rear-panel BNC connector accepts NIM standard, slow-positive logic signals to control the counting in Counter B. A level >+3 V or open circuit allows counting; <+1.5 V inhibits counting; input protected to +25 V. The driving source must be capable of sinking 5 mA of positive current during inhibit.

2.5. OUTPUTS

OVFL A Rear-panel output BNC connector provides a NIM standard, slow-positive logic signal each time Counter A overflows its 8-decade capacity. The signal has a nominal amplitude of +5 V; width ~20 μ s.

OVFL B Rear-panel output identical to Ovfl A except that it monitors overflows from Counter B.

2.6. INTERFACES

IEEE-488 When the IEEE-488 option board is plugged in it furnishes a rear-panel, standard, IEEE-488 bus connector. This 24-pin, AMP™CHAMP™ female connector

allows the Model 995 to be controlled from a computer via the IEEE-488 bus. The field-installable option provides computer control of the following functions: Count, Stop, Reset, Remote, selecting the displayed counter. In the Remote mode the computer can disable all front-panel controls. Computer readout includes: A and B counts, which counter is being displayed, and the overflow status for both counters.

SERIAL When the RS-232-C option board is plugged in it furnishes a rear-panel, 25-pin, male, D connector containing all signals for standard RS-232-C communications. It also contains connections for 20-mA current loop communications. The field-installable RS-232-C option provides computer control of the following functions: Count, Stop, Reset, Remote, and selecting the displayed counter. In the Remote mode the computer can disable all front-panel controls. Computer readout includes: A and B counts, and which counter is being displayed.

PRINT LOOP When the print loop option board is installed it furnishes a rear-panel, 14-pin, AMP CHAMP™ female connector containing signals for the standard EG&G ORTEC daisy chain print loop operations. This option is field-installable. When connected in a print loop with an EG&G ORTEC Model 777A Printer this option

offers automated recycling of the counting and printing of all eight digits of A and B Counters along with any other counters in the print loop. If the Model 777A is replaced with an EG&G ORTEC Model 879 Buffered Interface, the print loop will have IEEE-488 and RS-232-C interface capability allowing the computer to start and stop the counting, reset the module, and read the contents of the A and B Counters.

2.7. ELECTRICAL AND MECHANICAL

DIMENSIONS NIM-standard double-width module, 6.90 x 22.13 cm (2.70 x 8.714 in.) front panel per TID-20893 (Rev).

WEIGHT

Net 2.4 kg (5.2 lb).

Shipping 3.7 kg (8.2 lb).

POWER REQUIRED The basic Model 995 derives its power from a NIM bin furnishing ± 12 V and +6 V. For NIM bins that do not provide +6 V an optional Internal +6 V Supply is available. This option is field-installable and draws its power from the 117 V ac lines in the bin. With the Internal +6 V Supply installed the power requirements are shown in column four and not applicable in column three.

Power Requirement Table

	+12 V	-12 V	Bin Supplied +6 V	Internal +6V Supply 117 V ac
Basic Model 995	20 mA	110 mA	700 mA	75 mA
995 plus IEEE-488 option	30 mA	120 mA	1300 mA	105 mA
995 plus RS-232-C option	45 mA	135 mA	1300 mA	105 mA
995 plus Print Loop option	20 mA	110 mA	950 mA	85 mA

2.8. ORDERING INFORMATION

NOTE: All three interface option boards use the same position in the module. Only one can be plugged in at a given time.

995	Basic module without plug-in options.
99X-1	RS-232-C Interface option (cable not included).
99X-2	IEEE-488 Interface option (cable not included).
99X-3	Print Loop Interface option. Includes a 772-C1 Print Loop Cable (61 cm long) with a double-ended connector.
99X-4	Internal +6 V Supply option.
C-75	Female-to-female RS-232-C null modem cable (3-meter length).
C-80	Male-to-female RS-232-C extension cable (3-meter length).
C-488-1	IEEE-488 interface cable (1-meter length).
C-488-4	IEEE-488 interface cable (4-meter length).
772-C1-X-S	Print Loop Cable with double-ended connector. Specify the length "X" in feet.

3. INSTALLATION

Before inserting the Model 995 into the bin, set the switches and jumpers for the desired operating conditions. There are two jumpers inside the 995 that allow the operator to select the input polarity. The left-side panel must be removed to gain access to these jumpers. Also, if a communications interface is installed, an 8-position dip switch must be set up correctly for the particular system to which it is connected.

3.1. INPUT POLARITY SELECTION

The 995 accepts and counts either fast, negative-logic pulses or slow, positive-logic pulses. Determine the type of input pulses that will be furnished and set the internal PWB jumpers (W5 and W6) to accommodate the type of pulses selected as shown in Fig. 1. The 995 is shipped from the factory with the jumpers set for positive logic pulses.

When using the negative inputs, the threshold pots should be set at ≥ 1 V. This prevents any accidental triggering due to high ground currents present at counting rates of 100 MHz.

There are two important points to consider when supplying signals to the 995: (1) A single pulse must cross the threshold level only one time. Signals with overshoot or ringing will be counted more than once if such anomalies cause the signals to cross the threshold level. (2) Single pulses with slow rise and fall times should be as clean as possible to prevent

multiple counting. As a slow signal approaches the threshold, a small spurious noise pulse can traverse the threshold level and return, causing an extra count to be added.

3.2. GENERAL

The Model 995 Dual Counter operates on power furnished from a NIM-standard bin and power supply such as the EG&G ORTEC 4001/402D Series. If the bin and power supply does not contain a +6-V power supply, an optional, internal +6-V supply is available for the 995 that derives its power from the 117 Vac supply in the bin.

3.3. CONNECTION TO POWER

Always turn off the bin power supply before inserting or removing any modules. The power supply voltages should be checked after all modules have been inserted. The 4001/402D series has test points on the power supply control panel to permit monitoring of the dc voltages.

When power is applied to the 995, an automatic reset function clears the counters to zero and provides a standard set of start-up conditions: (1) display select set to Counter A, and (2) counters in the Stop condition.

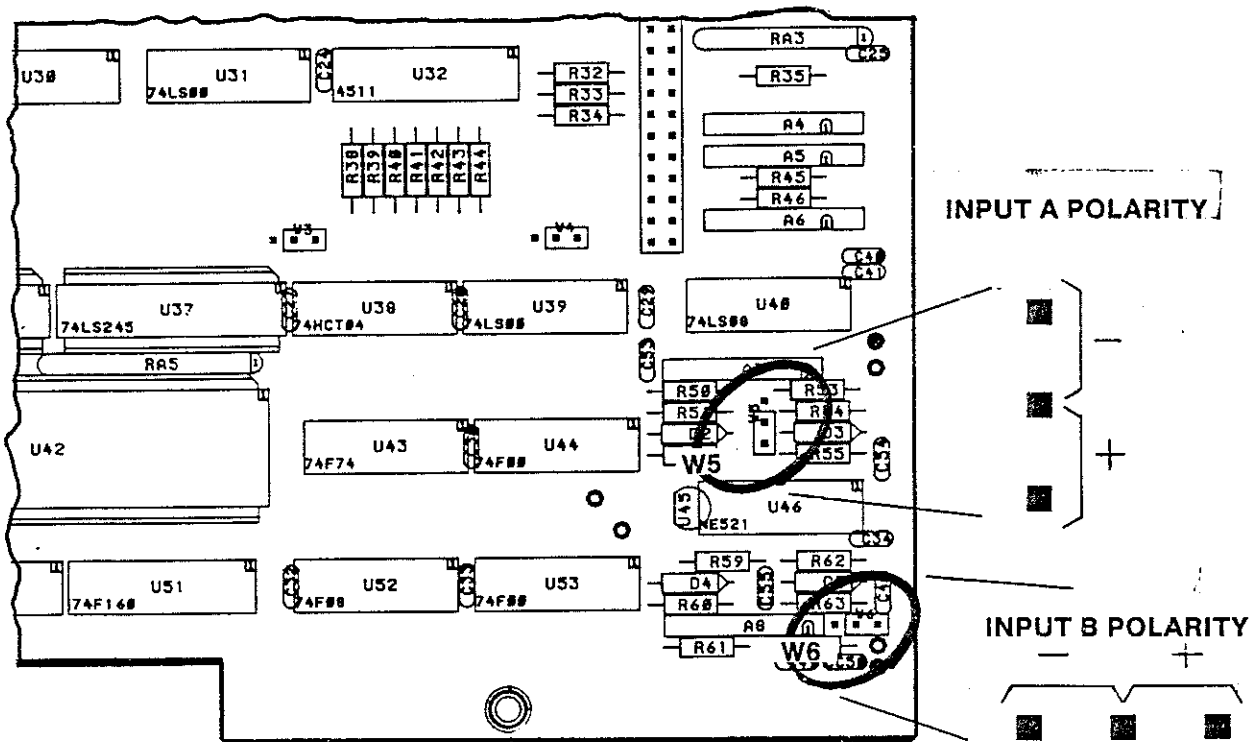


Fig. 1. Setting Polarity on W5 and W6 Select Counter Source.

3.4. SIGNAL CONNECTIONS

COUNTER INPUTS The 995 accepts and counts either fast negative logic pulses or positive pulses with an amplitude from 0.1 to 10 V (see Input Polarity Selection for instructions on how to select polarity). The negative input threshold is fixed at -250 mV. The positive input has a front-panel threshold adjustment which is variable from $+100$ mV to $+9.5$ V. A test point is included on the front panel to ease the adjustment process. For positive logic pulses, the threshold should be set well above the noise level of the input. When used with a linear signal as the input, the adjustment should be set just above the amplifier noise level.

ENABLE INPUT A gate input signal or dc level can be connected to the 995 through the Enable input on the front panel. With no input to this BNC, or with a voltage level $>+3$ V, the 995 is enabled to accept counts through the inputs on the front panel. To disable the counters, the input at this connector must be pulled below $+1.5$ V. To do this, the driving source must be capable of sinking 5 mA of current from the Enable input circuitry.

GATES A AND B INPUTS The individual A and B Gate inputs (BNCs) are located on the rear panel. The input

specifications are the same as for the Enable input, but only affect the inputs of the respective counters.

3.5. OUTPUT CONNECTIONS

OVERFLOW OUTPUTS The counter overflow output signals are available through the BNC connectors located on the rear panel. A slow-positive logic signal (nominally $+5$ V, $20\ \mu\text{s}$) appears at the connectors each time the contents of the corresponding counter change from 99,999,999 to 0. The output signal can be used as the input to another counter to increase the total counting capacity beyond eight decades.

3.6. OPERATION

To monitor the data collected during a counting cycle, press the Display Select until the LED representing the desired counter is lighted.

To start a counting cycle, press the Stop push button, then press the Reset push button, and then press the Count push button. The counting can be halted at any time by pressing the Stop push button. If desired the cycle can be resumed from the point of interruption by pressing the Count push button without pressing Reset.

4. OPTIONS FOR THE MODEL 995

There are three interfaces available for the Model 995 to facilitate the integration into a system environment: (1) the RS-232-C Serial interface which includes a 20-mA current loop circuit, (2) the IEEE-488 (GPIB) interface (1978 standard digital interface bus), and (3) the EG&G ORTEC standard print loop interface. Each of these interfaces is a separate plug-in card which is easily installed in the field.

For bin and power supplies that do not provide the +6 V needed for the logic circuitry used in the 995, an internal +6 V supply is available. This option is field installable, and delivers regulated +5 V directly to the integrated circuits on the PWB.

4.1. RS-232-C INTERFACE (MODEL 99X-1)

This Serial Communications Interface conforms to the EIA RS-232-C Standard and contains all the circuitry needed to communicate with most ASCII terminals and with most computers equipped with a Serial Communications Port. The connection is made with a standard 25-pin, male "D" connector mounted directly to the interface printed wiring board (PWB). The connector is accessible through a slot in the rear panel of the 995. This connector is wired as a DTE (data terminal equipment) device as defined in the RS-232-C standard. The 20-mA current signals are also included on this connector.

The signal connections are shown in Table 1. The signal names in upper case are the 20-mA current connections and the RS-232-C signal names are shown in lower case.

When this interface is connected to another DTE device such as a computer or terminal, a null Modem cable must be used to match the proper signals between the two devices. These cables are available at most computer equipment suppliers or directly from EG&G ORTEC. (See Appendix C, Optional Parts List.) The connections of the null modem cable are given in Table 2.

The serial option is a full-duplex, asynchronous communications interface with a selectable baud rate from 50 to 19,200. The baud rate selection is made via a 4-position DIP switch located on the PWB (Fig. 2). The baud rate selected must match exactly the baud rate of the device to which the 995 is connected. The switch settings are given in Table 3.

In addition to the baud rate selection, the format of the data bits (ASCII characters) must also be set to match the device to which the 995 is connected. To accomplish this, an 8-position DIP switch (Fig. 2) is provided to allow the operator to select the number of data bits, parity enable or disable, odd or even parity if enabled, and either one or two stop bits. These must match the device to which the 995 is connected. Table 4 defines these selections.

Table 1. RS-232-C Connections.

Pin No.	Signal	Pin No.	Signal
1	protective ground	14	
2	transmit data	15	
3	receive data	16	
4	request to send	17	POSITIVE TRANSMIT
5	clear to send	18	
6	data set ready	19	
7	signal ground	20	data terminal ready
8		21	
9		22	
10		23	POSITIVE RECEIVE
11		24	NEGATIVE TRANSMIT
12		25	NEGATIVE RECEIVE
13			

Table 2. Null Modem Cable Connections.

Computer	Pin No.	Pin No.	994
Protective ground	1 <---->	1	Protective ground
Signal ground	7 <---->	7	Signal ground
Transmit data	2 <---->	3	Receive data
Receive data	3 <---->	2	Transmit data
Request to send	4 <---->	5	Clear to send
Clear to send	5 <---->	4	Request to send
Data set ready	6 <---->	20	Data terminal ready
Data terminal ready	20 <---->	6	Data set ready

Table 3. Baud Rate Selection.

Baud Rate	S4	S3	S2	S1
50	On	On	Off	On
75	On	On	Off	Off
110	Off	Off	Off	Off
134.5	On	Off	On	On
150	Off	Off	Off	On
200	On	Off	On	Off
300	Off	Off	On	Off
600	On	Off	Off	On
1200	Off	On	Off	Off
1800	Off	On	Off	On
2400	On	Off	Off	Off
4800	Off	On	On	Off
9600	Off	On	On	On
19,200	On	On	On	On
19,200	On	On	On	Off

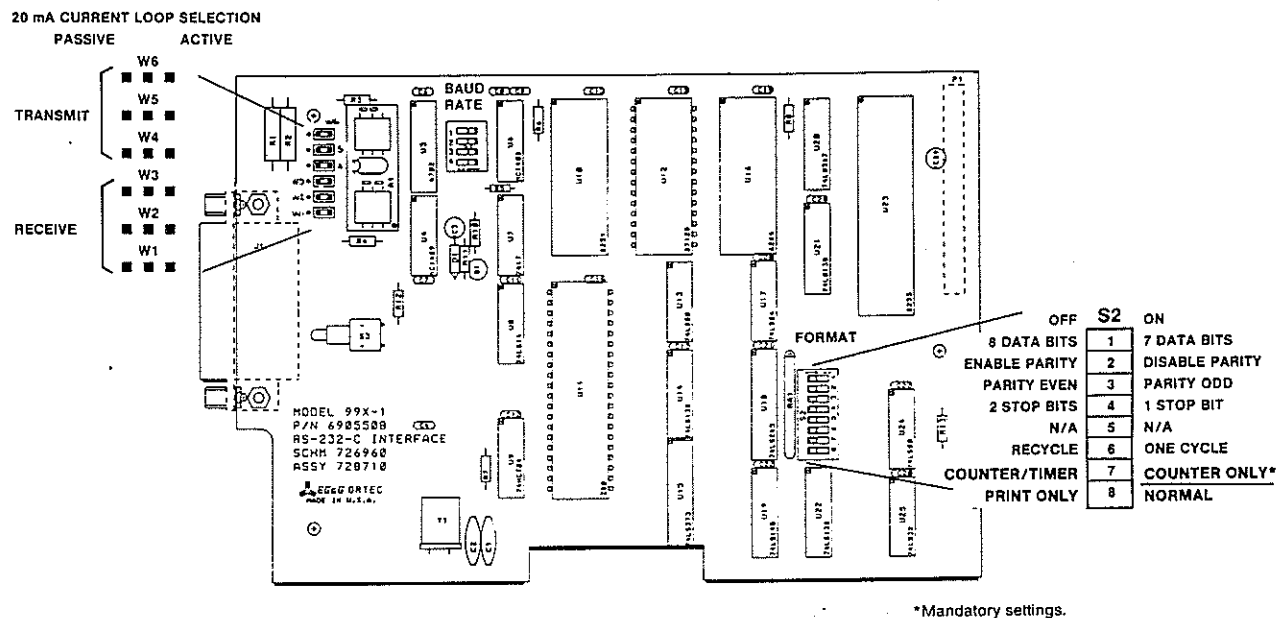


Fig. 2. Changing Jumpers on the 99X-1 RS-232-C Interface Board.

Table 4. Data Format.

Switch Position	Off	On
1	8 Data Bits	7 Data Bits
2	Enable Parity	Disable Parity
3	Even Parity	Odd Parity
4	2 Stop Bits	1 Stop Bit
5		
6	Recycle Mode	One-Cycle Mode
7	Counter/Timer	Counter Only*
8	Print Only	Normal

*Mandatory settings.

The 99X-1 is shipped from the factory with the following settings:

1. Character length set to 8 bits.
2. Parity check and generation disabled.
3. Parity selection set to even.
4. Stop bit selection set for 1.
5. Baud rate set for 9600.
6. One-cycle mode selected.
7. Counter/Timer selected. (Must be changed to Counter Only.)
8. NORMAL

4.1.1. 20-mA CURRENT LOOP OUTPUT

The 20-mA current loop operates in exactly the same way as the RS-232-C. All switch selections apply equally to the 20-mA current loop communications. The major difference in the two modes is the electrical characteristics of the signals. The RS-232-C uses a change in voltage to transmit and receive data, and the 20-mA current loop uses a

change in current to transmit and receive data. The current loop is optically coupled to the 995 and can be made to be either active (current for the loop supplied by the 995) or passive (current for the loop supplied by the connected device) by changing a set of jumpers on the interface board (Fig. 2). The transmit and receive loops can be individually selected to be active or passive. The Model 99X-1 is factory-set at shipment with both the transmit and receive loops set for active. The transmit and receive signals are included in the RS-232-C connector. A special cable is needed when using the 20-mA current loop to connect the 995 to a computer or terminal. This cable is available from EG&G ORTEC (Appendix C, Optional Parts List).

4.1.2. USING THE 99X-1 WITH A PRINTER

By placing the PRINT ONLY-NORMAL (S2-8) to the PRINT ONLY position, the 99X-1 Interface will drive a printer with an RS-232-C interface directly. This allows the module to generate a hard copy of the data collected without the need for commands from a computer or keyboard. When the interface is installed in a Counter/Timer and the module is started with the Count control, each time the preset value is reached the data is automatically transferred to a printer. If the Recycle mode is selected (S2-6 Off) the Counter data is cleared and a new cycle is started immediately. If the One Cycle mode is selected (S2-6 On), the counter will halt until a reset is generated either by the front-panel Reset switch or by the Dwell Time expiring, at which time a new counting cycle will begin.

When the interface is installed in a Counter Only module, a counting cycle is started by the front-panel Count control. When the counting cycle is stopped either by pressing the

Stop control or by bringing the Master Enable (or Gate) input low, the data which has accumulated in the counter will be transferred to the printer. If the Recycle mode is selected, the counter will be cleared and a new data collection cycle started as soon as the counter is enabled either by the Count control if the counting was terminated by the Stop switch, or by the Master Enable (or Gate) going high if the counting was stopped by this signal. If the One Cycle mode is selected, the counter will continue counting from the point of interruption without being reset when reenabled to count.

When power is applied to the module, the Model Number of the Module and the firmware version will be printed. When any of the mode switches are changed, the module must be powered up again before the changes are recognized.

4.1.3. INSTALLATION INSTRUCTIONS

To install the RS-232-C interface follow the steps listed below:

1. Remove the left side plate from the module. If the optional power supply is not already installed, skip to step 5.
2. Remove the right side panel.
3. Remove the two screws holding the optional power supply to the bottom right module bar.
4. Remove the two screws on the top of the power supply chassis which secure it to the bracket mounted on the bottom left module bar and move the power supply chassis out of the module.
5. On the interface board, set the switches to the desired positions using Tables 3 and 4 to match the Model 995 and the device to which it will be connected.
6. Install the interface board into the module, sliding the RS-232-C connector through the slot in the rear panel of the module first and align the 40-pin connector on the back of the board with the pins provided on the counter board. Use care to ensure proper match-up of connector and pins.
7. Install the two mounting screws into the standoffs provided on the counter board.
8. Reinstall the power supply chassis if one is present.
9. Replace side panels and installation is complete.

4.2. IEEE-488 (GPIB) INTERFACE (MODEL 99X-2)

The IEEE-488-1978 standard bus is a byte-serial, bit parallel interface system established primarily for the transfer of data and commands between the components of an instrumentation network. The system is defined for no more than 15 devices, interconnected by passive cabling, whose total transmission length does not exceed 20 meters. Data rates through any of the 16 signal lines that comprise the bus must be <1M-byte/s and consist of digital data only. The bus is connected in parallel to all components of the system and is designed to ensure reliable data transfer throughout the network.

Eight lines of (DIO1-DIO8) are used for the transfer of data between the components of the system. Three lines (DAV, NRFD, and NDAC) are used as transfer control. The re-

maining five lines (IFC, ATN, SRQ, REN, and EOI) are for bus management. These lines may employ either open-collector or tri-state drivers as defined by the IEEE-488-1978 standard.

Information is transmitted over the eight data lines under direct supervision of the three transfer control lines. Transfer proceeds as fast as the components of the system can respond, but no faster than the slowest device currently addressed by the bus. This permits multiple data transfers to more than one device on the bus at a time.

Active devices connected into the system may be talkers, listeners, controllers, or a combination of the three, but no more than one device may be designated as a talker at any given time. The controller determines the role of each of the devices by sending out an address of the device to be defined. Addresses of the devices are set at the time of system configuration (before power is applied) by means of an 8-position DIP switch. Sections 1 thru 5 of switch 1 are used for the address selection (Table 5).

The following are descriptions for the 16 bus lines defined in the IEEE-488 bus.

DIO 1 THROUGH DIO 8 (DATA INPUT/OUTPUT) These bi-directional lines are used to transfer data between devices. Data is asynchronous and generally bi-directional. The lines carry either data or address information, depending on the state of the ATN line.

DAV (Data Valid) One of the three transfer control lines used to indicate that data is available on the DIO lines.

NRFD (Not Ready For Data) Another transfer control line used to indicate that all devices are ready to accept data.

NDAC (Not Data Accepted) The third transfer control line that indicates the acceptance of data by all devices.

ATN (Attention) A bus management line used to indicate the type of data on the data lines. When the ATN line is asserted, DIO 1-8 carry address or commands. When ATN is false, the data lines carry only data.

IFC (Interface Clear) A bus management line which is used to place the system in a known state for system initialization.

SRQ (Service Request) A bus management line used to indicate a need for service by a device in the system.

REN (Remote Enable) A bus management line used to select either local or remote control of each device.

EOI (End Or Identify) The fifth bus management line used to indicate the end of a multiple-byte transfer sequence. This line is asserted with the last byte of a data record.

The IEEE-488 (GPIB) interface is a separate PWB that plugs into the 995 counter board and is held in place with two screws. The connector containing the signals for bus communications is mounted to the board and is accessible through the rear panel of the 995. The placement of the connector is in accordance with the Standard NIM Digital Bus (NIM/GPIB) with pin 1 of the connector to the top of the module.

When power is applied to the 995, a series of self-test routines is executed to test certain parts of the module. A response record is created to show the results of the tests. This response record must be read by the bus controller before the 995 will accept any command. A service request (SRQ) is issued to notify the controller that service is required before commands can be accepted. Commands sent to the 995 must be terminated with ASCII (carriage return and line feed) characters. For every command received by the 995, a response record is returned and must be accepted by the controller before another command can be issued. In case of a SHOW command to the 995, two response records must be read by the controller. All response records from the 995 will be terminated with a carriage return-line feed sequence with the EOI line asserted along with the line feed character.

Table 5 shows the switch configuration for address selection of the device on the bus (Fig. 3).

The address selected is the total of the switches set to the Off position. For example, to select an address of 25, switches 1 (1), 4 (8), and 5 (16) should be set to the Off position.

4.2.1. USING THE 99X-2 WITH A PRINTER

By placing the PRINT ONLY-NORMAL (S2-8) to the PRINT ONLY position, the 99X-2 Interface will drive a printer with an IEEE-488 (GPIB) interface directly if the printer is addressable as a **Listen Only** device. A bus controller is not needed for this operation, but only one Counting module can be connected to the printer. This allows the module to generate a hard copy of the data collected by controlling the module with the front-panel controls. When the interface is installed in a Counter/Timer, and started by the Count control, each time the preset value is reached the data is automatically transferred to a printer. If the Recycle mode is

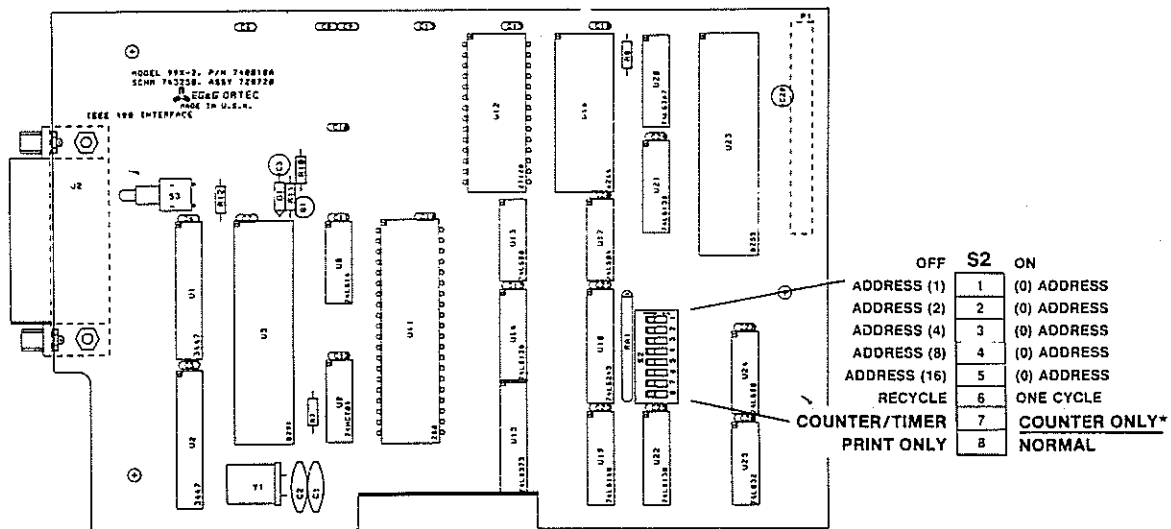
Table 5. Address Configuration.

Switch Position	Off	On
1	Address (1)	Address (0)
2	Address (2)	Address (0)
3	Address (4)	Address (0)
4	Address (8)	Address (0)
5	Address (16)	Address (0)
6	Recycle Mode	One-Cycle Mode
7	Counter/Timer	Counter Only *
8	Print Only	Normal

*Mandatory settings.

selected (S2-6 Off), the Counter data is cleared and a new cycle is started immediately. If the One Cycle mode is selected (S2-6 On), the counter will halt until a reset is generated either by the front-panel Reset switch or by the Dwell Time expiring, at which time a new counting cycle will begin.

When the interface is installed in a Counter Only module, a counting cycle is started by the front-panel Count control. When the counting cycle is stopped either by pressing the Stop control or by bring the Master Enable (or Gate) input low, the data which has accumulated in the counter will be transferred to the printer. If the Recycle mode is selected, the counter will be cleared and a new data collection cycle started as soon as the counter is enabled either by the Count control if the counting was terminated by the Stop switch, or by the Master Enable (or Gate) going high if the counting was stopped by this signal. If the One Cycle mode is selected, the counter will continue counting from the point of interruption without being reset when reenabled to count.



*Mandatory settings.

Fig. 3. Address Selection of DIP Switch on the 99X-2 IEEE-488 Interface Board.

When power is applied to the module, the Model Number of the Module and the firmware version will be printed. When any of the mode switches are changed, the module must be powered up again before the changes are recognized.

4.2.2. INSTALLATION INSTRUCTIONS

To install the IEEE-488 (GPIB) interface follow the steps listed below:

1. Remove the left side plate from the module. If the optional power supply is not already installed, skip to step 5.
2. Remove the right side panel.
3. Remove the two screws holding the optional power supply to the bottom right module bar.
4. Remove the two screws on the top of the power supply chassis which secure it to the bracket mounted on the bottom left module bar and move the power supply chassis out of the module.
5. On the interface board, set the switches to the desired positions using Table 5. Set switch 7 to Counter Only.
6. Install the interface board into the module, sliding the IEEE-488 (GPIB) connector through the slot in the rear panel of the module first and align the 40-pin connector on the back of the board with the pins provided on the counter board. Use care to insure proper match-up of connector and pins.
7. Install the two mounting screws into the standoffs provided on the counter board.
8. Reinstall the power supply chassis if one is present.
9. Replace side panels and installation is complete.

4.3. PRINT LOOP INTERFACE (MODEL 99X-3)

With this interface the 995 can be included in a print loop with the other counters and timers from EG&G ORTEC. Up to 50 counters can be included in a counting system with one controller, such as the Model 879 Buffered Interface, providing the interface from the loop to a computer or printout device.

A four-pole DIP switch (Fig. 4) is located on the PWB to select one of the three operating modes: Master, Slave, or Normal. This switch determines the role of the individual

modules when contained in a counting system. As a Master, the 995 drives the system gate lines but does not respond to a system gate driven by another device. As a Slave, the 995 does not drive the system gate or the system reset signals but does respond to both. In the Normal position, the 995 does not drive or respond to the system gate or system reset signals. When used with a Model 879 controller module the usual operating mode would be the Slave mode.

Two jumpers, W1 and W2, are located on the printed wiring board. Both have two positions labeled DUAL and SINGLE which represent the number of counting sections associated with the Counter module in which the interface is used. For the 995, both jumpers are to be in the DUAL positions.

The Print Loop Connection is made through a 14-pin connector accessible through the rear panel of the 995. A standard print loop cable (EG&G ORTEC Model 772-C1) is used to connect the 995 to the other modules in the data acquisition system. The connections in the cable are listed in Table 6.

Table 6. Print Loop Signals.

Pin No.	Signal Name
1	Data 1
2	Data 2
3	Data 4
4	Data 8
5	Print
6	Print Advance
7	Previous Module Finished
8	System Gate
9	System Preset
10	System Reset
11	Ground
12	Control
13	This Module Finished
14	This Module Printing

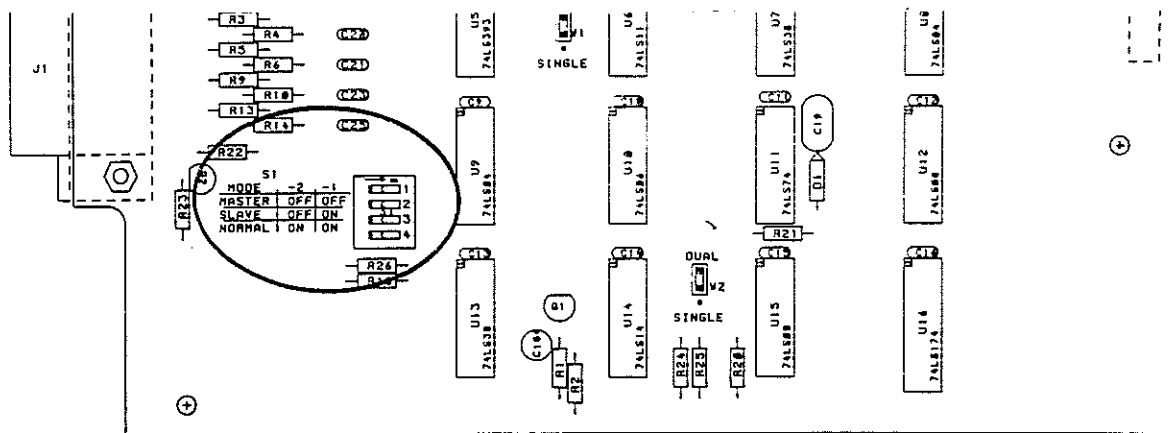


Fig. 4. Selecting Operating Modes on the 99X-3 Print Loop Interface Board.

The print loop signals are included in the 14-pin connector on the Print Loop Interface board and in each of the other units in the printing loop system. All of the signals except one are in parallel to all units in the system. The exception is Previous Module Finished, as an input to the module, and This Module Finished, as an output to the next module. This signal ripples through the printing loop to indicate to each module when its turn to transfer data has occurred. The order in which modules transfer data is determined by the cables and their relative positions in the loop.

DATA LINES (1, 2, 4, 8) transfer the four bits of BCD data from the assigned module to the Controller module. Each module drives these lines only during its turn for printing.

PRINT prepares the modules in the loop for data transfer.

PRINT ADVANCE advances the module through its digits during data transfer. It starts with the most significant digit and scans sequentially to the lowest significant digit.

PREVIOUS MODULE FINISHED starts the actual data transfer from an instrument when its turn has occurred.

SYSTEM GATE carries a signal to all modules set for Slave operation in the system loop. This signal can be used to synchronize the data collection time for all modules in the loop.

SYSTEM PRESET carries a signal to all modules in the system loop. A preset condition stops data collection in all modules in the loop.

SYSTEM RESET carries a Reset signal to all modules in the loop except any that may be set for Normal. This signal originates in the Master module or in the Controller module.

GROUND provides a common ground reference to all modules in the system loop.

CONTROL carries a signal to indicate when the controller is in charge of the loop. This signal is used to disable the Dwell function in any module in the loop that contains this function.

THIS MODULE FINISHED carries a signal to the next module in the loop (arrives as PREVIOUS MODULE FINISHED) to indicate its turn to transfer data has occurred.

THIS MODULE PRINTING carries a signal to the controller to indicate to the controller that the module presently transferring data has a number other than six decades of data to transfer to the controller. This line is only driven during the module's turn to transfer data.

4.3.1. INSTALLATION INSTRUCTIONS

To install the PRINT LOOP interface in the EG&G ORTEC Models 994, 995, 996, or 997, follow the steps listed below:

1. Remove the left side plate from the module. If the optional +6 V power supply (Model 99X-4) is not already installed, skip to step 5.
2. Remove the right side panel.
3. Remove the two screws holding the optional power supply to the bottom right module bar.

4. Remove the two screws on the top of the power supply chassis which secure it to the bracket mounted on the bottom left module bar, and move the power supply chassis out of the module.

5. On the interface board, set the switch to the desired position: Master, Slave, or Normal.

6. Set both W1 and W2 jumpers for Models 994 and 995 to the DUAL position and for Models 996 and 997 to the SINGLE position.

7. Install the interface board into the module, sliding the PRINT LOOP connector through the slot in the rear panel of the module first, and align the 40-pin connector on the back of the board with the pins provided on the counter board. Use care to ensure proper match-up of connector and pins.

8. Install the two mounting screws into the standoffs provided on the counter board.

9. Reinstall the power supply chassis if one is present.

10. Replace side panels and installation is complete.

4.4. INTERNAL +6 V SUPPLY OPTION (MODEL 99X-4)

This option is available for systems that do not have a bin and power supply containing a +6 V supply. It contains a transformer, bridge, rectifier, and filter capacitor and uses the 117 Vac available in the bin to generate the voltage and power needed for the logic circuitry contained in the 995. Although it replaces the function of the external +6 V supply, it actually feeds +5 V power directly to the logic circuits on the PWB.

4.4.1. INSTALLATION INSTRUCTIONS

To install the optional Internal +6 V Supply, follow the steps listed below:

1. Remove both side panels.
2. Mount the small L-shaped bracket to the left lower module bar with two flathead screws provided. Use the third and fifth holes in the module bar, counting from the rear of the module.
3. Unplug the connector going to the Transistor mounted on the rear panel.
4. Slide the Power Supply chassis into the module and align the two holes in the top of the chassis with the two holes on the mounting bracket. Insert the two roundhead screws provided to secure the chassis to the mounting bracket.
5. Using the remaining two flathead screws, secure the chassis to the right module bar through holes three and five counting from the rear.
6. Connect the power supply to the module using the connector that previously went to the power transistor on the PWB side of the rear panel.
7. The connector to the power transistor can be left disconnected or the power transistor and connector can be removed from the module.
8. Replace the side panels and the installation is complete.

5. PROGRAMMING THE 995

5.1. RS-232-C INTERFACE

To become familiar with the 995 commands and response records it is suggested that a terminal be used. This allows the operator to exercise the unit and view on the terminal display exactly what must be done inside a computer program to communicate with the 995 effectively. A complete list of commands and responses is given in Appendix A of this manual.

5.1.1. TERMINAL OPERATION

The first step, whether interfacing to a terminal or computer, is to ensure that the proper cables are available and that the data format and baud rate switches are set correctly (Tables 3 and 4). The actual settings are not as important as ensuring that the 995 and the device to which it is connected are set to

exactly the same conditions. These conditions include the baud rate, number of data bits, parity conditions, and number of stop bits. Also, set the 995 to the Recycle mode. When these conditions have been satisfied, connect the terminal to the 995 and apply power to the terminal. Next apply power to the 995. A % response record should appear on the terminal screen showing the results of the self-test at power-up. If all is well, the response record should be %001000070.

Since the 995 powers up in the Computer mode, the first command to the 995 should be to change to the Terminal mode. This is done by typing TERMINAL and a return on the keyboard. These characters will not appear on the screen, but the % response record (%000000069) and prompt (>) should appear after the return. Now, any characters typed on the keyboard will be echoed to the terminal display.

Now that communication has been established, try the following commands:

SHOW_VERSION	This command shows the version of firmware installed in the 995.
\$F0995-001	
%000000069	
>	
SET_DISPLAY 1	This command selects Counter B value to be displayed.
%000000069	
>	
SET_DISPLAY 0	This command selects Counter A, and the display should read 0.
%000000069	
>	
START	Start data collection.
%000000069	
>	
This counting will continue until a STOP command is sent to the 995.	
STOP	
%000000069	
>	
SHOW_COUNTS	This command shows the contents of Counters A and B separated by a semicolon.
00000000;00000000	
%000000069	
>	

Refer to Appendix A and exercise the remainder of the commands until you are familiar with the actions and responses. This will prove valuable when using the commands in a computer program. Remember that for every SHOW command, two response commands must be read.

5.1.2. BASIC PROGRAMMING

Connect the 995 to the computer via the RS-232-C cable (refer to Section 4 for proper cable connections). The following BASIC program for the IBM-PC and compatible computers shows some of the programming methods between the 995 and the computer:

5.2. INTERFACING TO THE IEEE-488 BUS

Of the three choices of interface, the IEEE-488 interface holds the greatest potential for misunderstandings. This section on programming the IEEE-488 will hopefully help smooth the interfacing. The two computer systems discussed in this section are the Hewlett-Packard and the IBM-PC compatibles. For other computers, there should be enough information included to allow interfacing to the Model 995. The major difference between the Hewlett-Packard computers and the IBM-PC compatibles is the fact that Hewlett-Packard includes software drivers in the high-level languages, but on the IBM compatibles the interface

```

10 REM  SAMPLE PROGRAM FOR THE IBM-PC AND COMPATIBLES
20 REM  OPEN SERIAL PORT FOR COMMUNICATIONS
30 REM  SET PORT FOR 9600 BAUD, NO PARITY, AND 8 DATA BITS
40 OPEN  "COM1:9600,N,8" AS #1
50 REM  DEFINE SUCCESS RESPONSE FROM THE 995
60 OK$ = "%000000069"
70 REM  INITIALIZE THE 995 TO A POWER-UP CONDITION
80 PRINT #1, "INIT"
90 REM  READ RESPONSE RECORD FROM THE 995 AND STOP IF NOT OK
100 INPUT #1, RESP$
110 IF RESP$ <> OK$ THEN PRINT RESP$: STOP
120 REM  EXERCISE A FEW OF THE COMMANDS
130 PRINT #1, "CLEAR_COUNT"
140 INPUT #1, RESP$
150 IF RESP$ <> OK$ THEN PRINT RESP$: STOP
160 REM  READ COUNTER VALUE
170 PRINT #1, "SHOW_COUNTS"
180 INPUT #1, CNT$
190 INPUT #1, RESP$
200 IF RESP$ <> OK$ THEN PRINT RESP$: STOP
210 REM  LOAD DISPLAY SELECT AND READ IT BACK
220 PRINT #1, "SET_DISPLAY 1"
230 INPUT #1, RESP$: REM  READ RESPONSE RECORD
240 PRINT #1, "SHOW_DISP"
250 INPUT #1, ANS$: REM  READ VALUE BACK
260 INPUT #1, RESP$: REM  READ RESPONSE RECORD
270 D$ = MID$(ANS$ 3,3)
280 IF VAL(D$) <> 1 THEN PRINT ANS$: STOP
290 END

```

circuitry and the software drivers to interface to the IEEE-488 bus must be installed in order to complete the working system.

The most important aspect of interfacing to the IEEE-488 bus is ensuring that the address switches in the 995 are set correctly and that the correct address is used when accessing the 995 in a program statement (Section 4). The other important consideration is to always read the response records from a previous command before trying to send another command; otherwise, the 995 will not respond. Also, when the 995 is powered up, a series of self-tests are performed, and the results of these tests are included in a power-up response record that must be read by the Bus Controller before any other commands are sent to the 995.

Before attempting to connect the 995 to the computer, the address switches should be checked to ensure that the proper address is selected and does not conflict with another module connected to the bus. The 995 is shipped from the factory with the address switches set for 4. If more than one 99X-2 is connected to the bus, the addresses of all but one will have to be changed. The address may be set for any number from 0 to 31; however, 0 is usually used for the controller in charge, and 31 is used as the untalk and unlisten commands (Section 4.2, Table 5).

Another important point to consider when communicating with the 995 is the fact that the 995 always asserts the Service Request (SRQ) signal line on the bus when information is available for transfer. This will be reset by conducting a serial poll or by reading the response record from the 995. When a serial poll is conducted, a serial poll status byte is transferred to the computer. This byte contains information about the status of the 995 and is defined in Fig. 5.

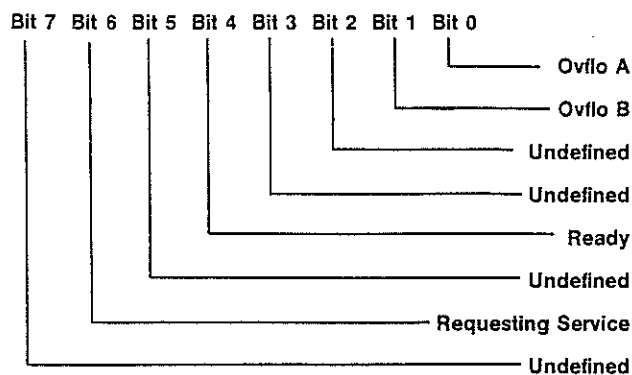


Fig. 5. Serial Poll Status Byte.

The 995 will not accept another command until the response record is read. The ready condition will be indicated by a serial poll status byte with only bit 4 asserted.

Install the Model 995 in the bin and connect the IEEE-488 bus cable to the connector on the rear panel of the 995. Turn on the power to the bin. The easiest way to become familiar with programming the 995 via the IEEE-488 bus is to use the immediate mode of communications, whereas the computer can be used as a terminal to exercise the commands. This method can be used to become familiar with the protocol of the GPIB and the 995 communications structure. The

following examples for the Hewlett-Packard and the IBM-PC compatibles will show the command formats and responses from the 995.

5.2.1. HEWLETT-PACKARD COMPUTER EXAMPLES

The first computer system discussed will be the Hewlett-Packard, which should apply to the HP-85 family and the 9816, 9826, and the 9836 computers. The computer should be set to terminate each data transfer with a line feed character. Refer to the operating manual for set-up procedures.

Since the Model 995 has just been powered up there will be a response record waiting to be transferred to the computer. This response record must be read before the 995 will accept commands. First a serial poll will be performed to show the service request bit set. With the computer operating under BASIC, execute the following commands.

```
A = SPOLL (704)
DISP A
64
```

In the above statement, 7 selects the GPIB interface in the computer and 03 is the address of the 995 on the bus. This automatically conducts a serial poll of the 995 and assigns the status byte, which is an 8-bit binary value, to the variable A. When the variable A is displayed, the value 64 is printed which is the decimal value of the 8-bit binary status byte.

Next, the power-up response record must be read before any commands will be accepted by the 995.

```
ENTER 704; A$
DISP A$
%001000070
```

The ENTER statement reads the response record and assigns the input characters to the string variable A\$, and the DISP statement prints the string to the screen.

In the following statements a command is sent to the 995, and the resulting responses from the 995 are read.

```
OUTPUT 704; "SHOW_VERSION"
ENTER 704; A$
DISP A$
$F0995-001
ENTER 704; A$
DISP A$
%000000069
```

In the above commands, the firmware version installed in the 995 is asked for, the string is assigned to A\$ and displayed to the screen, and the response record is read, which indicates that everything is O.K. Remember for every SHOW command, two records must be read.

The next statement shows a command to the 995 which includes parameters along with the command.

```
OUTPUT 704; "SET_DISPLAY 1"
ENTER 704; A$
DISP A$
%000000069
```

The above command should have changed the counter being displayed from A to B.

```
OUTPUT 704; "SET_DISPLAY 0"
ENTER 704; A$
DISP A$
%0000000069
```

Counter A should now be displayed. Connect a signal to Input A and type the following command:

```
OUTPUT 704; "START"
ENTER 704; A$
DISP A$
%0000000069
```

The Gate light should now be On and the counter display should be accumulating counts.

```
OUTPUT 704; "STOP"
ENTER 704; A$
DISP A$
%0000000069
```

The Gate light should go Off and the counting should stop.

```
OUTPUT 704; "SHOW_COUNTS"
ENTER 704, A$
DISP A$
XXXXXXXX;00000000;
ENTER 704; A$
%0000000069
```

The XXXXXXXX in the first counter value should match the value shown in the display of the 995. Remember that for every SHOW command two records must be read.

Using the above examples and the information in Appendix A, exercise the remaining commands to become familiar with the commands and response records. The following is a sample BASIC program to demonstrate the commands and responses in a program.

```
10 REM  EXAMPLE PROGRAM FOR COMMUNICATING WITH THE 995 FROM
11 REM  HP COMPUTER. IT IS ASSUMED THAT AN ADDRESS OF 4 IS
12 REM  SELECTED FOR THE 995 AND 7 IS THE NUMBER OF THE GPIB
13 REM  INTERFACE IN THE COMPUTER
14 CLEAR !REM CLEAR DISPLAY
15 DIM A$(25)
20 REM  USE A SERIAL POLL TO FIND OUT IF THE 995 IS STARTING FROM
21 REM  A POWER-UP CONDITION
22 = SPOLL(704)
23 REM  SKIP RESPONSE RECORD IF SERVICE REQUEST BIT NOT SET
24 IF A < 64 THEN GOTO 30
25 ENTER 704; A$ !REM READ POWER—UP RESPONSE RECORD.
26 IF A$ <> "%00100007" THEN GOTO 30 ! REM TEST FOR POWER-UP
27 DISP "STARTING FROM POWER UP"
28 REM  IF POWER-UP, THEN SKIP INIT COMMAND
29 GOTO 40
30 REM  IF NOT POWER-UP INITIALIZE 995
31 OUPUT 704;"INIT"
32 REM  WAIT FOR INIT COMMAND TO COMPLETE
33 FOR I = 1 TO 200 @ NEXT I ! REM WAIT LOOP
34 REM  READ RESPONSE RECORD FROM 995
35 ENTER 704; A$
36 REM
40 REM  TEST COMMUNICATIONS FOR LOAD AND READ OPERATIONS
41 C$ = "%0000000069": REM  CORRECT RESPONSE RECORD
42 OUTPUT 704; "START"! REM  SEND START COMMAND
43 ENTER 704; A$ ! REM  READ RESPONSE RECORD
45 REM  DELAY LOOP TO ALLOW COUNTS TO ACCUMULATE
46 FOR I = 1 TO 200 @ NEXT I
47 OUTPUT 704; "STOP"! REM  SEND STOP COMMAND
48 ENTER 704; A$ ! REM  READ RESPONSE COMMAND
49 IF A$ <> C$ THEN DISP "ERROR IN STOP COMMAND"@ STOP
50 REM  NOW READ ACCUMULATED COUNTS
```

```

51 OUTPUT 704; "SHOW_COUNTS"! REM  ASK FOR COUNT VALUE FROM 995
52 ENTER 704; A$! REM  READ COUNT VALUE
53 DISP A$! REM  VALUE PRINTED SHOULD MATCH COUNTER DISPLAY
54 REM  READ SECOND RESPONSE RECORD FROM SHOW COMMAND
55 ENTER 704; A$
56 REM  END OF COMMUNICATIONS TEST
57 DISP "END OF COMMUNICATIONS TEST"
58 END

```

5.2.2. IBM-PC PROGRAMMING EXAMPLES

Before connecting the 995 to the IBM interface there are some important considerations regarding the setup of the software drivers which must be done before attempting to communicate with the 995. These are described in the installation and users guide which comes with the interface. These include the creation or editing of a file called CONFIG.SYS to let the DOS know that the interface is installed. Also there are modifications which may have to be made to a file called GPIB.COM. This is done by running a program called IBCONF. This allows the selection of the device number and address of the 995 on the bus. These programs are described in details in the Users Guide for the IBM interface.

When these initial setup procedures have been completed, connect the 995 to the computer and apply power to the 995. As with the H-P computer, it is much easier to become familiar with the command format and response records by using the computer in an immediate mode. To do this with the IBM, a program called IBIC must be run. Type IBIC to start the program, and follow instructions when the logo appears. The following is a step-by-step example of communicating with the 995. The text appearing in upper case letters is generated by the computer; commands typed by the operator are in lower case letters.

PRESS F1 FOR HELP

GPIBO: set dev4

DEV4:

Commands to the 995 are only sent when the prompt DEV4: is present. Because the 995 has just been powered up, a power-up response record will be waiting to be read. A serial poll (ibrsp) command should confirm that the 995 is asserting the service request (SRQ) line on the bus.

```

DEV4: ibrsp
[100] ( CMPL )
POLL: 0X40

```

DEV4:

The second line shows the contents of the status registers. In this case, it shows that the command was completed by the interface adapter. The results of the poll (0X40) show that the service request was being asserted by the 995 (40 hex is bit 6 of the serial poll status byte set to a 1).

Next, read the power-up response record from the 995. This is done with the command ibrd [xx], where xx is the number of bytes to be read. This number must be as large as, or larger than, the number of bytes expected. Most response records from the 995 will be 11 bytes long including the line feed terminator. One exception is the contents of the counters in the SHOW_COUNTS command, which is 19 bytes long. Others may be shorter than the 11 bytes (Appendix B).

```

DEV4: ibrd 12
[2100] ( END CMPL )
COUNT: 11
25 30 30 31 30 30 30 30          % 0 0 1 0 0 0 0
37 30 0A                          7 0 .

```

DEV4:

In the above example, the second line is the status register contents, the third line is the number of bytes transferred by the 995 module to the computer, the fourth and fifth lines show the characters transferred with the hexadecimal value on the left and the ASCII characters on the right.

Now the 995 is ready to accept commands from the computer. The next example sends a SHOW_VERSION command to the 995 that will cause the 995 to send the version of firmware installed in the module. The \n characters in the command cause the computer to send a line feed (new line) character along with the command. This must be included before the 995 will execute the command.

```

DEV4: ibwr "show_version\n"
[100] ( CMPL )
COUNT: 13

```

DEV4:

Now read the version number.

```

DEV4: ibrd 12
[2100] ( END CMPL )
COUNT: 11
24 46 30 39 39 35 2D 30          $ F 0 9 9 5 - 0
30 31 0A                          0 1 .

```

DEV4:

Now read the response record:

```

DEV4: ibrd 12
[2100] ( END CMPL )

```

```
25 30 30 30 30 30 30 30      % 0 0 0 0 0 0 0
36 39 0A                        6 9 .
```

DEV4:

Connect a signal source to input A and type the following command.

```
DEV4: ibwrt "start\n"
[100] ( CMPL )
COUNT: 6
```

```
DEV4: ibrd 12
[2100] ( END CMPL )
COUNT: 11
```

DEV4:

The Gate light should be On and the counter display should be advancing.

```
DEV4: ibwrt "stop\n"
[100] ( CMPL )
COUNT: 5
```

```
DEV4: ibrd 12
[2100] ( END CMPL )
COUNT: 11
```

```
25 30 30 30 30 30 30 30      % 0 0 0 0 0 0 0
36 39 0A                        6 9 .
```

DEV4:

The counting should be stopped and the Gate light should be Off. The next command asks for the counter contents with the SHOW_COUNTS command.

```
DEV4: ibwrt "show_counts\n"
[100] ( CMPL )
COUNT: 12
```

```
DEV4: ibrd 20
[2100] ( END CMPL )
COUNT: 19
30 30 30 3X 3X 3X 3X 3X      0 0 0 X X X X X
3B 30 30 30 30 30 30 30      ; 0 0 0 0 0 0
30 3B 0A                      0 ; .
```

```
DEV4: ibrd 12
[2100] ( END CMPL )
COUNT: 11
25 30 30 30 30 30 30 30      % 0 0 0 0 0 0 0
36 39 0A                        6 9 .
```

DEV4:

The numbers represented by the Xs in the first record should match the numbers showing in the display of the 995. Remember that two response records must be read for every SHOW command. Using the above examples, refer to Appendix A and exercise the remaining commands to become familiar with the commands and the response records.

The following is a sample program written in BASIC to show how some of the commands may be used in a program. The same format holds for any programming language used. The following program must be preceded by steps 1 through 99 of the program DECL.BAS (see Installation Instructions in the IBM Interface Manual).

```
100 REM THIS PROGRAM MUST BE APPENDED TO DECL.BAS PROVIDED
101 REM BY THE INTERFACE MANUFACTURER.
102 REM
103 REM MAKE SOME ASSIGNMENTS:
104 LF$ = CHR$(10): REM LINEFEED CHARACTER
105 COUNTER$ = "DEV4": REM REFER TO DEV3 AS COUNTER IN PROGRAM
106 GPIB0$ = "GPIB0": REM GPIB0 REMAINS GPIB0
107 CALL IBFIND (GPIB0$,GPIB0%)
108 CALL IBFIND (COUNTER$,COUNTER%)
109 OK$ = "%000000069": REM RESPONSE GENERATED IF EVERYTHING OK
110 REM THIS PROGRAM TESTS THE COMMUNICATIONS BETWEEN THE 995
111 REM AND THE COMPUTER.
112 REM
120 REM FIRST TEST THE SERVICE REQUEST TO SEE IF STARTING FROM
121 REM A POWER-UP.
122 REM
130 CALL IBRSP (COUNTER$,SPR%): REM SERIAL POLL TO 995
131 S% = (SPR% AND &H40): REM TEST SERVICE REQUEST BIT
132 IF S% = 0 THEN GOTO 140 ELSE PRINT "STARTING FROM POWER-UP"
133 CALL IBRD (COUNTER$,RD$): REM READ POWER-UP RESPONSE
134 REM
135 REM SKIP INIT COMMAND IF STARTING FROM POWER-UP
136 GOTO 150
```

```
137 REM
140 REM  SEND INIT COMMAND TO 995
141 WRT$ = "INIT" + LF$: REM  ALL COMMANDS MUST TERMINATE WITH LF$
142 CALL IBWRT (COUNTER%,WRT$): REM  SEND COMMAND
143 REM  WAIT FOR COMMAND TO BE EXECUTED
144 FOR I = 1 TO 100 : NEXT I
145 REM  READ RESPONSE RECORD FROM INIT COMMAND
146 CALL IBRD (COUNTER%,RD$)
147 REM
150 REM  TEST START AND STOP COMMANDS
151 WRT$ = "START" + LF$
152 CALL IBWRT (COUNTER%,WRT$): REM  SEND START COMMAND
153 CALL IBRD (COUNTER%,RD$): REM  READ RESPONSE RECORD
154 REM  ALLOW TIME FOR SOME COUNTS TO ACCUMULATE
155 FOR I = 1 TO 200: NEXT I: REM  DELAY LOOP
156 REM  NOW STOP COUNTER AND READ COUNTS
157 WRT$ = "STOP" + LF$
158 CALL IBWRT (COUNTER%,WRT$): REM  SEND STOP COMMAND
160 REM  READ RESPONSE RECORD
161 CALL IBRD (COUNTER%, RD$)
170 REM
171 REM  READ COUNTS FROM ((% COUNTER
172 WRT$ = "SHOW_COUNTS" + LF$
173 CALL IBWRT (COUNTER%,WRT$): REM  SEND COMMAND
174 REM  READ CONTENTS OF THE COUNTER AND DISPLAY THE VALUE
175 CALL IBRD (COUNTER%,RD$): REM  READ VALUE
176 PRINT RD$: REM  DISPLAY VALUE
177 REM  READ SECOND RESPONSE FROM SHOW COMMAND
178 CALL IBRD (COUNTER%,RD$)
179 REM
180 REM  THIS CONCLUDES THE COMMUNICATIONS TEST
181 PRINT "COMMUNICATIONS TEST COMPLETE"
182 END
```

APPENDIX A. ASCII COMMANDS TO THE MODULE

This appendix describes the ASCII command format used by the 995 module.

NOTE: When controlling the module from a terminal, lower case letters typed at the terminal are converted to upper case by the module before echoing the characters to the terminal and evaluating the command.

A.1. COMMAND WORDS

A command consists of words separated by underscores. The first word of the command is a verb. The second and third words are not always used and are called nouns and modifiers, respectively. The following is a typical command:

ENABLE_TRIGGER_START

In the preceding command, ENABLE is the verb, and TRIGGER is the noun, and START is the modifier. Only enough letters of a word to make it unique (four letters is always sufficient) need be used in a command. The preceding command could thus be abbreviated to EN_TRIG_STA.

A.2. DATA VALUES

Some commands need to include data values. Such values must be separated from the keywords by one or more spaces. The data is also sent as ASCII characters, and if more than one parameter is included in the value, the parameter values must be separated by commas. The following is a command with data values:

SET_DISPLAY 1

In the preceding command, the module is told to select Counter B for display.

In the command descriptions given in this appendix, the following notation is important:

< . . . > encloses a required value
[. . .] encloses an optional value

A.3. CHECKSUMS

A checksum may optionally be included at the end of a command record. It is used by the module upon reception of the command to verify that the record was transmitted without error. The actual checksum is a byte obtained by adding all of the bytes of the record together, as if they were 8-bit, unsigned, binary integers. Unless otherwise stated, the checksum is to be transmitted as three ASCII characters representing the decimal equivalent of the binary integer (decimal values range from 000 to 255 for 8-bit integers) rather than a single binary byte. The three checksum characters, if present, must be the last characters of the command record before the delimiter and must be separated from any data values by a comma. If a data value is optional or not used, a comma must precede the checksum for clarity.

A.4. RESPONSE FROM THE MODULE

After a command has been transmitted from the computer or terminal to the module, no other command should be issued until a response record has been received from the module. The response record indicates how the module responded to the previous command and that the module is ready to receive another command. Appendix B explains how the computer or terminal operator should interpret the response records.

A.5. TIME UNITS USED IN COMMANDS

"Delay" is the time the module will wait before processing or responding to a command from the operator or computer. Delay values must be given in special time units of 0.25 ms. The computer operator must remember to enter the values for Delay properly.

A.6. CATALOG OF COMMANDS FOR THE 995

The commands on the following pages are arranged in alphabetical order. Be sure to read the introductory material in this appendix before proceeding to the command descriptions.

CATALOG OF COMMANDS

Command	Minimum Letters	Description
CLEAR_ALL	CL_ALL	Clears counters, count preset, event counter, and event preset.
CLEAR_COUNTERS	CL_COU	Clears all counters in the 995 module.
CLEAR_EVENT_PRESET	CL_EV_PR	Resets the event preset register to zero.
COMPUTER	COMP	Sets the 995 to the computer mode, where it does not echo any characters. This is the complement to the TERMINAL command.

CATALOG OF COMMANDS (cont'd.)

Command	Minimum Letters	Description
DISABLE_TRIGGER_START	DIS_TRI_STA	(IEEE-488 operation only.) Disables the group execute trigger command from starting the counting cycle in the 995.
DISABLE_TRIGGER_STOP	DIS_TRI_STO	(IEEE-488 operation only.) Disables the group execute trigger command from stopping the counting cycle in the 995.
ENABLE_LOCAL	EN_LOC	Places the 995 under local control (i.e., the front-panel controls). The 995 will still respond to the communications interfaces and to commands from a host.
ENABLE_REMOTE	EN_REM	Places the 995 totally under the control of a host computer. All front-panel controls except the display select are disabled.
ENABLE_TRIGGER_START	EN_TRI_STA	Enables the 995 to start a counting cycle on a "group execute trigger" command from the IEEE-488 bus. This enables a number of counters to start simultaneously from a single trigger command.
ENABLE_TRIGGER_STOP	EN_TRI_STO	Enables the 995 to stop a counting cycle on receiving a "group execute trigger" command from the IEEE-488 bus. This is the complement to the ENABLE_TRIGGER_START command.
INIT	INIT	Causes the 995 to restart or initialize. Same as a reset or power up.
SET_DISPLAY <VALUE>	SET_DISP	Selects the counter whose contents will be displayed on the 995 front-panel, 7-segment LEDs. The value will be either 0 or 1 for Counters A and B respectively.
SHOW_ALARM	SH_ALA	Returns a \$I response record showing the status of the alarm. The answer is in the form of a "T" for true and "F" for false. Example: \$IF.
SHOW_COUNTS	SH_COU	Shows the contents of Counters A and B of the 995. 00000000;00000000; %0000000069
SHOW_DISPLAY	SH_DISP	Causes the 995 to send a response record showing the number of the counter whose contents are being displayed in the digits on the front panel. 0 = Counter A, 1 = Counter B. \$A000245 %0000000069
SHOW_VERSION	SH_VER	Causes the 995 to send a record which shows the firmware version included in the 995. \$F0995-001 %0000000069

CATALOG OF COMMANDS (cont'd.)

Command	Minimum Letters	Description
START	STA	Causes the 995 to start a counting cycle.
STOP	STO	Stops the 995 from counting.
TERMINAL	TER	Places the 995 in the terminal mode so that every character received is echoed to and displayed on the terminal.
TEST <NUMBER>	TEST	Causes the 995 to perform certain self-test routines. Only the ROM and RAM self-tests are implemented.

APPENDIX B. RESPONSE RECORDS FROM THE 995 MODULE

The 995 Dual Counter/Timer sends various types of information to the controlling terminal or computer. This appendix describes the types of responses the module makes to the various commands. The operator must be familiar with the concept of a record; that is, a continuous stream of characters with a special character such as the ASCII carriage return or line feed marking its end.

B.1. DELIMITING CHARACTERS

The end of a record transmitted between two devices must be marked by a special delimiting character. The record delimiter for communications with the 995 module is either a carriage return or a line feed character, or both, as follows:

INPUT from either RS-232-C or IEEE-488:

Either a carriage return or a line feed character will be accepted.

OUTPUT to IEEE-488:

A line feed character is always used.

OUTPUT to RS-232-C:

Either a carriage return or the two-character combination of a carriage return and a line feed may be appended to a record transmitted over the RS-232-C interface.

B.2. PERCENT RESPONSE RECORDS

This type of record is called a "percent" record because it always begins with the ASCII percent (%) character. A percent record is always transmitted after the execution of a command by the module; it tells whether the command execution was successful and, if not, what type of error may have occurred. Execution of a subsequent command cannot begin until the module has transmitted the percent response record, terminating the current command. Percent response records are fixed in length and have the following format (the spaces are for readability and are not part of the record):

% xxx yyy ccc <DL>

where % is the ASCII percent character, the next three bytes (xxx) are a code for the general type of error, the second three bytes (yyy) are the specific type of error, and the final three bytes (ccc) are the checksum bytes (Appendix A). <DL> is an appropriate delimiting character (Appendix B).

Records beginning with 001, 002, and 004 can be OR-ed together to obtain composite error indications. That is, the indication of power-up and self-test results must all be

considered in order to determine what actually happened in the event of an error. For example (see code below), % 005 002 could be derived by OR-ing % 001 with % 004 (power-up just occurred and a self-test failed), with the 002 indicating that the ROM-1 test failed.

The following are percent response code assignments:

Command executed successfully:

% 000 000 CCC

Power-up just occurred:

% 001 000 CCC

Power-up self-test failed:

% 004 002 CCC ROM test failed

% 004 008 CCC RAM test failed

Command syntax error:

% 129 001 CCC invalid verb

% 129 002 CCC invalid noun

% 129 004 CCC invalid modifier

% 129 008 CCC invalid command data

% 129 128 CCC invalid first data value

% 129 129 CCC invalid second data value

% 129 130 CCC invalid third data value

% 129 131 CCC invalid fourth data value

% 129 132 CCC invalid command

Communications error:

% 130 001 CCC UART buffer overrun

% 130 002 CCC UART parity error

% 130 004 CCC UART framing error

% 130 008 CCC IEEE-488 communications error

% 130 128 CCC input checksum error

% 130 129 CCC input record too long

% 130 130 CCC invalid input data record

% 130 133 CCC aborted due to invalid handshake

Execution error:

% 131 128 CCC invalid first command parameter

% 131 129 CCC invalid second command parameter

% 131 130 CCC invalid third command parameter

% 131 131 CCC invalid fourth command parameter

% 131 132 CCC invalid number of parameters

% 131 133 CCC invalid data (other than command data)

% 131 134 CCC could not load selected value

% 131 135 CCC counters must be stopped but were not

B.3. DOLLAR RESPONSE RECORDS

All other response records begin with the ASCII dollar sign character (\$) and another character to indicate the particular type of dollar record. The following dollar response records are available:

\$A xxx CCC <DL>	<p>A \$A record is used to transmit one 8-bit unsigned binary integer. The integer is transmitted as three ASCII character digits (xxx) which are the decimal equivalent of the binary integer. The decimal value will be between 0 and 255.</p> <p>The final three characters (CCC) are three ASCII character digits representing the checksum value for the record as a three digit decimal value. <DL> is an appropriate delimiting character. (See SHOW_DISPLAY and SHOW_MODE commands in Appendix A.)</p>
\$F xx <DL>	<p>The \$F response record is used to transmit a variable-length-string of printable ASCII characters, shown here as "xx". It may consist of one or more characters. No checksum is used, and <DL> is an appropriate delimiter. The command generating a \$F record is SHOW_VERSION.</p>
\$I x <DL>	<p>A \$I response record is used to transmit a single character record, either an ASCII "T" for true or an ASCII "F" for false, represented in the example by "x". <DL> is an appropriate delimiting character. The command generating this record is SHOW_ALARM.</p>

APPENDIX C. OPTIONAL PARTS LIST

C.1. CABLES AND CONNECTORS

A maximum cable length of 50 feet should be used for the RS-232-C interface. The following cables should only be used for data rates of 9600 baud or less; higher rates require shielded cables to minimize RF interference with other devices located in the area.

C.2. ORDERING INFORMATION

Information about or orders for parts should be submitted to an EG&G ORTEC sales representative or to the following address:

EG&G ORTEC
Attn: Nuclear Electronics
100 Midland Road
Oak Ridge, TN 37831-0895 U.S.A.

Module Description	EG&G ORTEC Part No.
495 Power Supply (± 6 V)	638630
Cable Description	
25-foot, male-female RS-232-C cable	641810
10-foot, female-female RS-232-C null modem cable	641830
C-75 (3-meter length), female-female RS-232-C null modem cable	641820
Male-male gender changer	641840
3.3-foot, IEEE-488 cable	603620
13.2-foot, IEEE-488 cable	641720
772-C1 print loop cable	462360
918 20-mA cable (C19)	609820

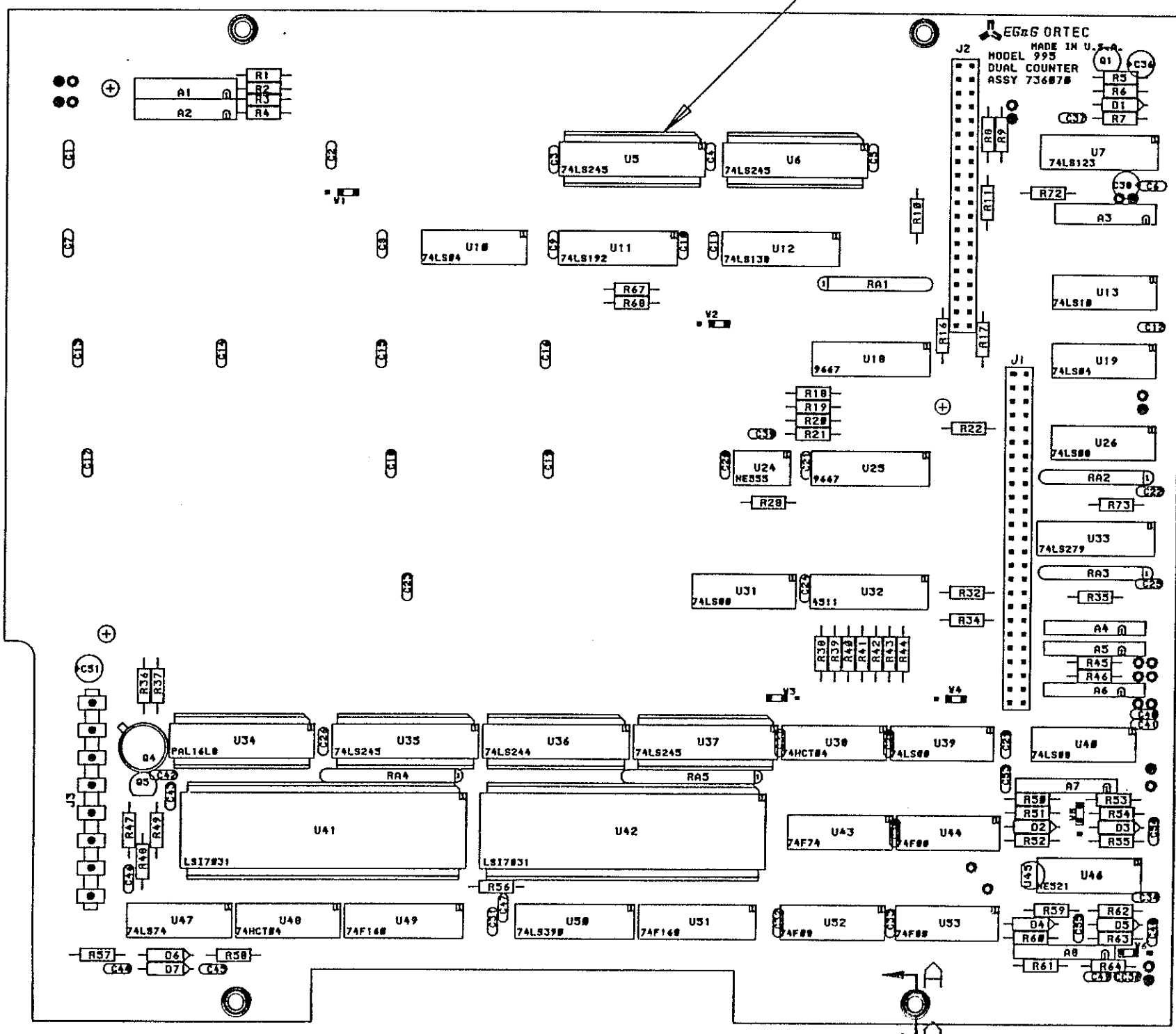
**BIN/MODULE CONNECTOR PIN ASSIGNMENTS
FOR AEC STANDARD NUCLEAR INSTRUMENT
MODULES PER TID-20893 (Rev 4)
(adopted by DOE)**

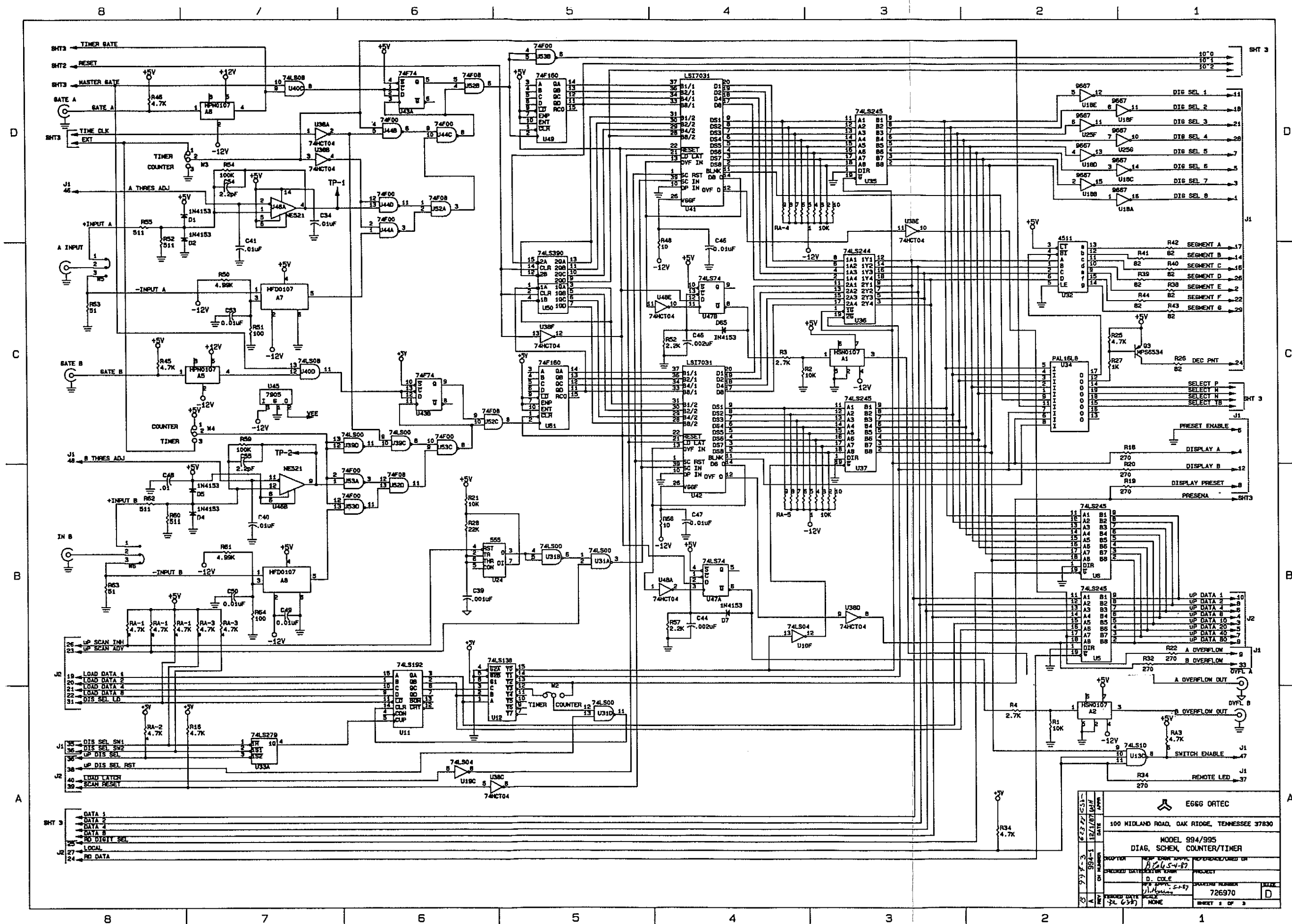
Pin	Function	Pin	Function
1	+3 volts	23	Reserved
2	-3 volts	24	Reserved
3	Spare Bus	25	Reserved
4	Reserved Bus	26	Spare
5	Coaxial	27	Spare
6	Coaxial	*28	+24 volts
7	Coaxial	*29	-24 volts
8	200 volts dc	30	Spare Bus
9	Spare	31	Spare
*10	+6 volts	32	Spare
*11	-6 volts	*33	117 volts ac (Hot)
12	Reserved Bus	*34	Power Return Ground
13	Spare	**35	Reset (Scaler)
14	Spare	**36	Gate
15	Reserved	**37	Reset (Auxiliary)
*16	+12 volts	38	Coaxial
*17	-12 volts	39	Coaxial
18	Spare Bus	40	Coaxial
19	Reserved Bus	*41	117 volts ac (Neut.)
20	Spare	*42	High Quality Ground
21	Spare	G	Ground Guide Pin
22	Reserved		

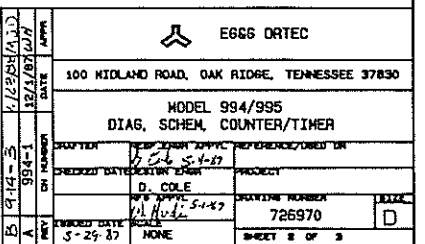
Pins marked (*) are installed and wired in EG&G ORTEC's 4001A, 4001B, 4001C, 401A, and 401B Modular System Bins.

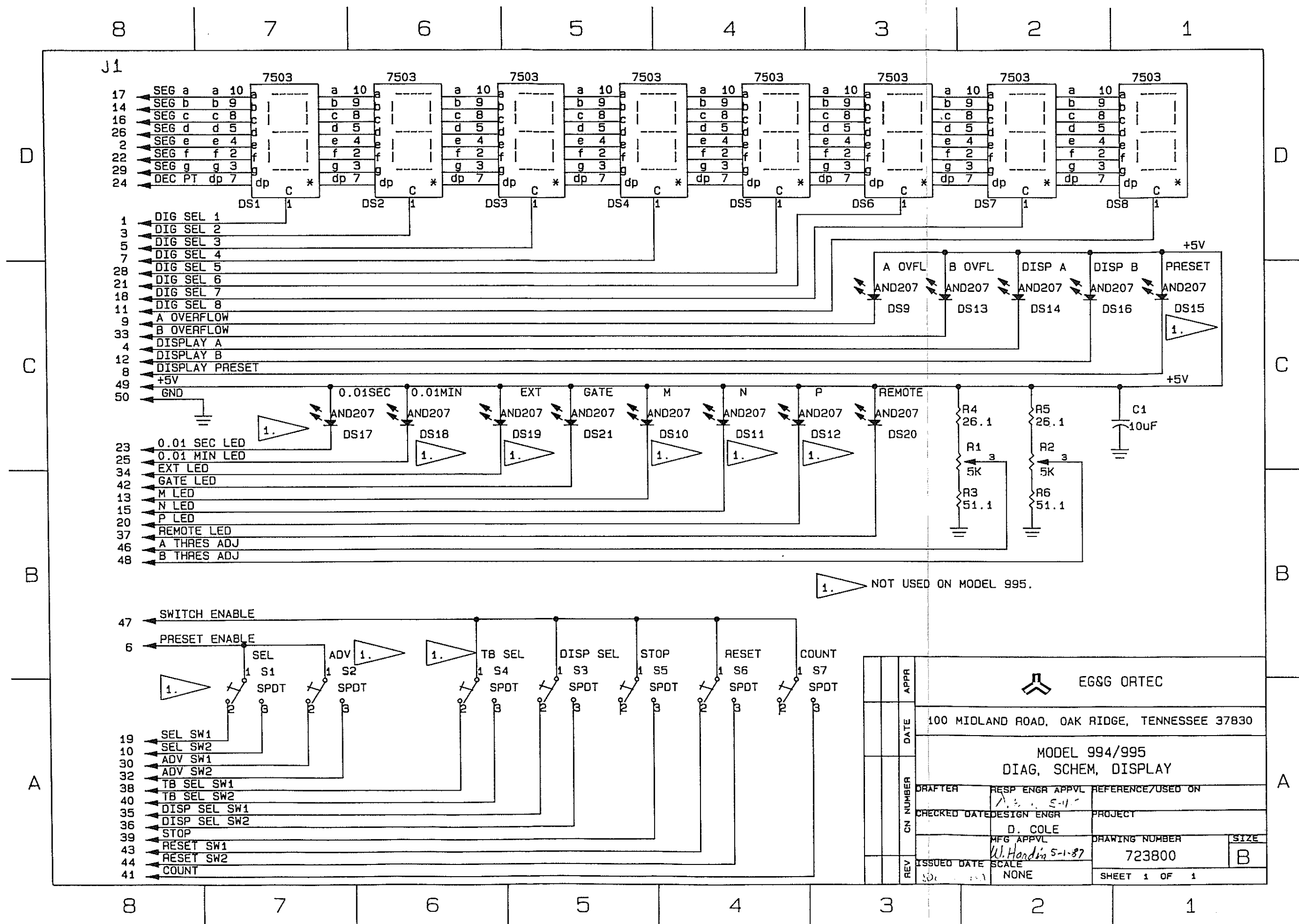
Pins marked (*) and (**) are installed in EG&G ORTEC-HEP M250/N and M350/N NIMBINS.

3 INDICATES COMPONENT IN SOCKET.

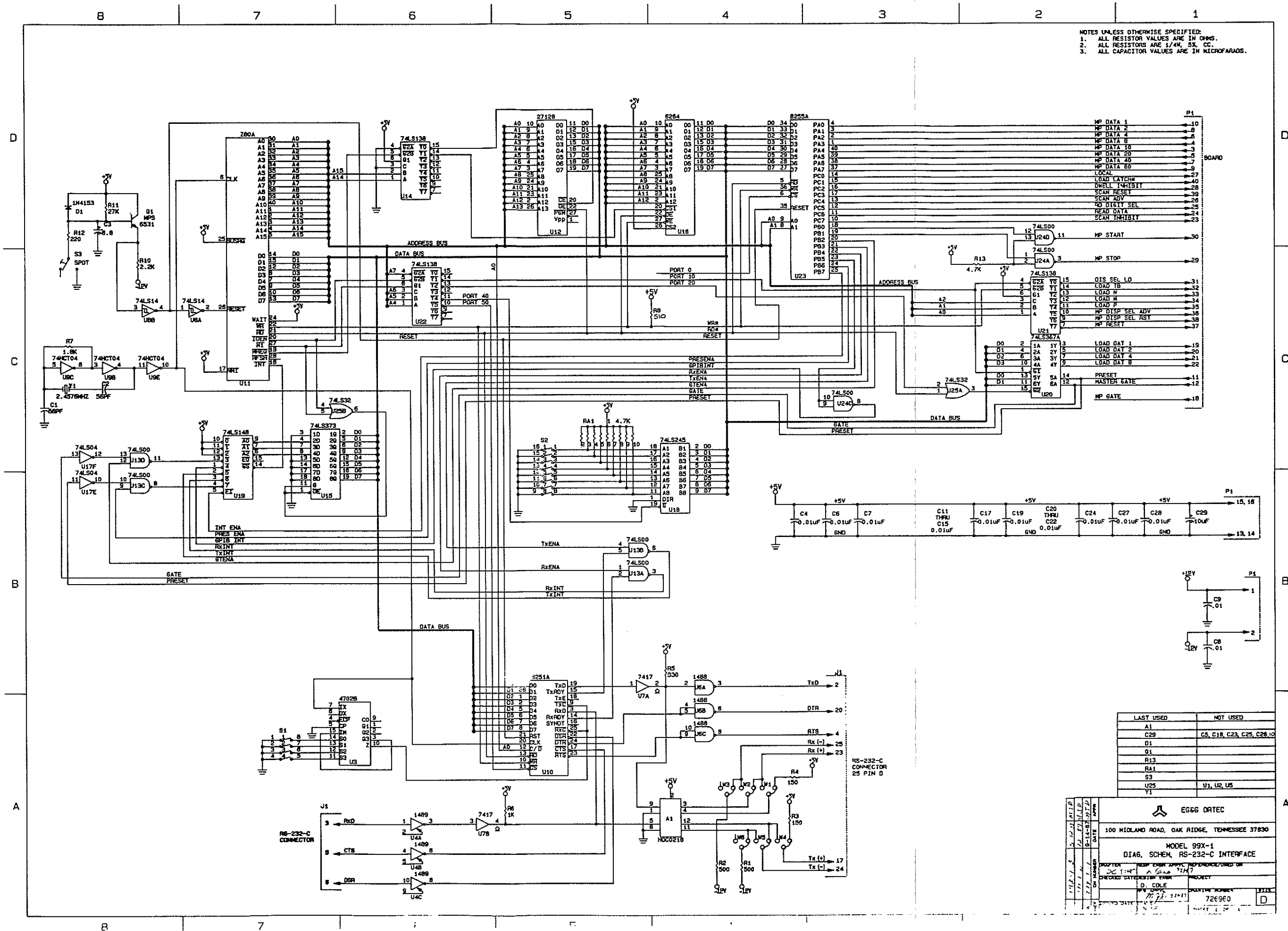








EG&G ORTEC			
100 MIDLAND ROAD, OAK RIDGE, TENNESSEE 37830			
MODEL 994/995 DIAG, SCHEM, DISPLAY			
DRAFTER	RESP ENGR	APPVL	REFERENCE/USED ON
CHECKED DATE	DESIGN ENGR	PROJECT	
MFG APPVL		DRAWING NUMBER	SIZE
ISSUED DATE		723800	B
SCALE		SHEET 1 OF 1	
NONE			



D

C

3

1

8

7

6

5

4

2

D

C

B

A

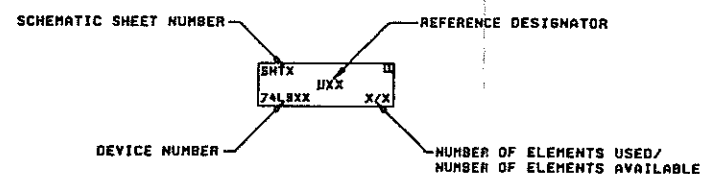
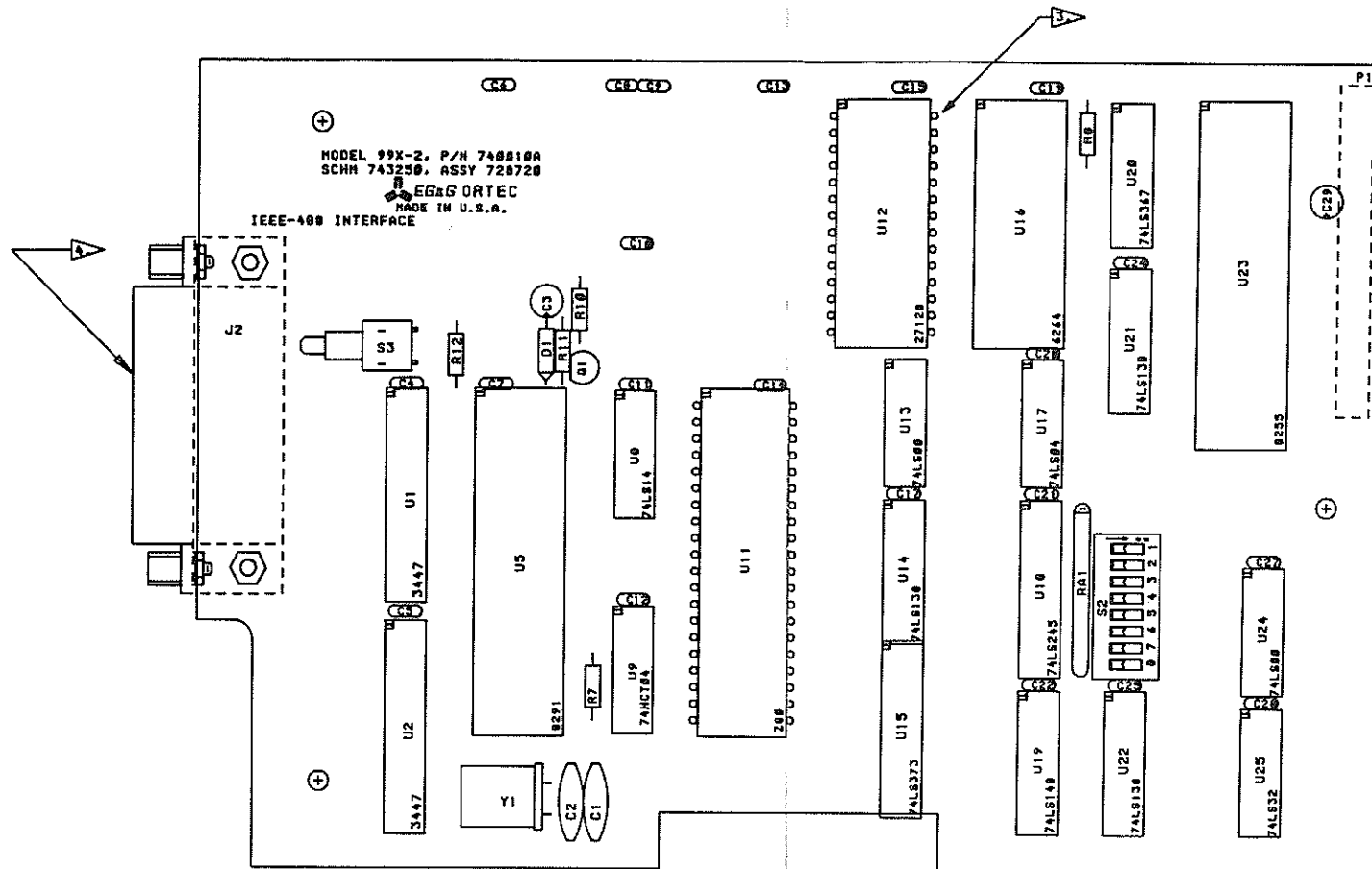
NOTES UNLESS OTHERWISE SPECIFIED:

1. ASSEMBLE COMPONENTS IN ACCORDANCE WITH EG&G ORTEC WORKMANSHIP STANDARDS SECTION PC ASSEMBLY.

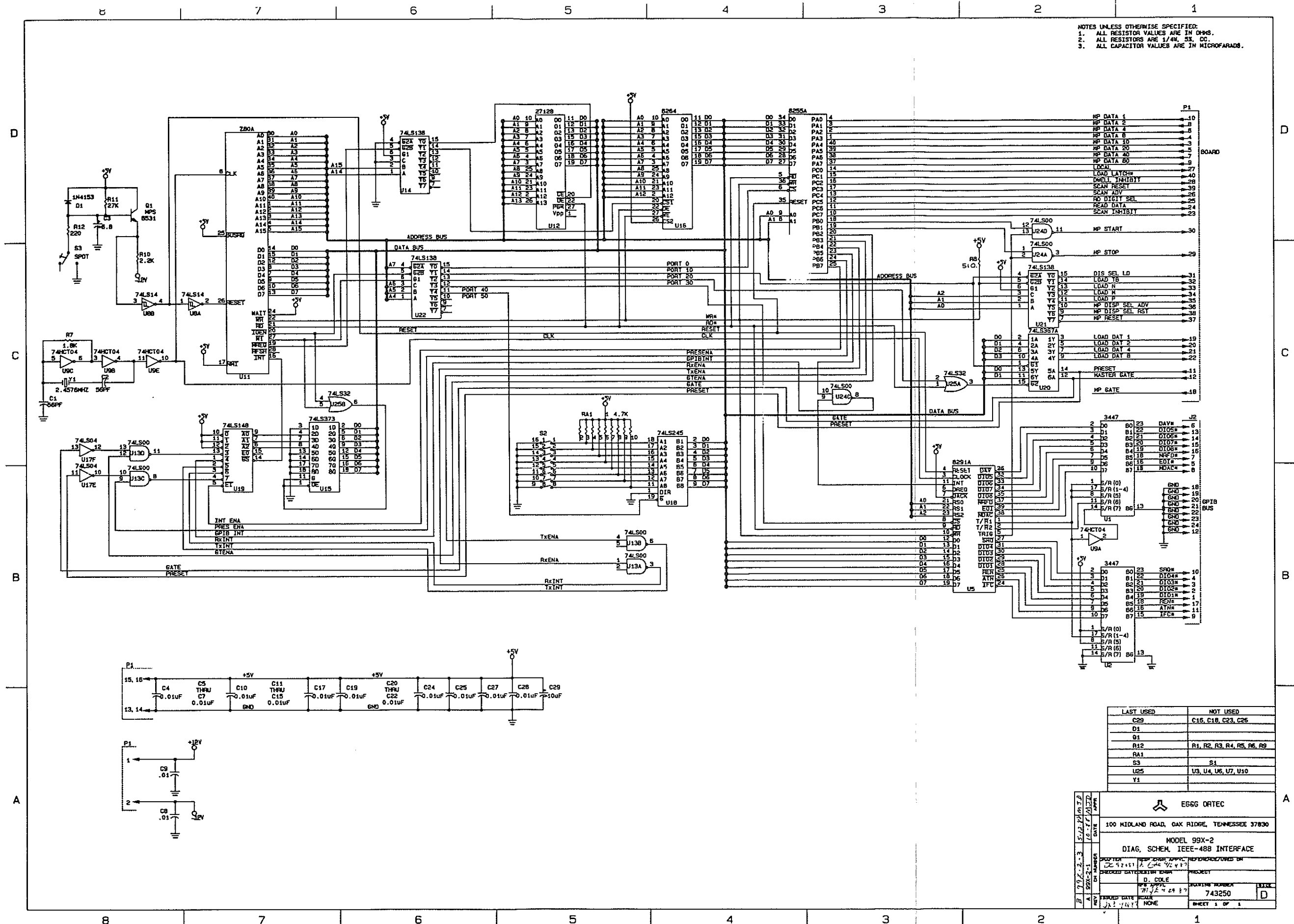
2. SOLDER PER ORTEC WORKMANSHIP STANDARD SECTION 5.

3 INDICATES MINIATURE SOCKETS

4 COMPONENT MOUNTED FARSIDE.



EG&G ORTEC	
100 MIDLAND ROAD, ONE RIDGE, TENNESSEE 37068	
MODEL 99X-2 PWB ASSY, IEEE-488 INTRC	
33 207 012 1012	720720 D
33 207 012 1012	3 0 3



D

C

B

A

D

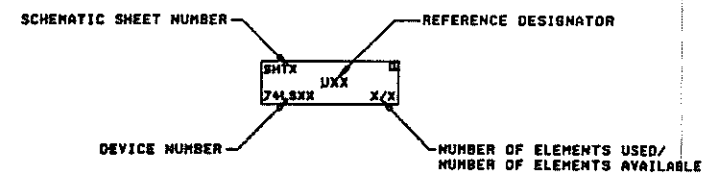
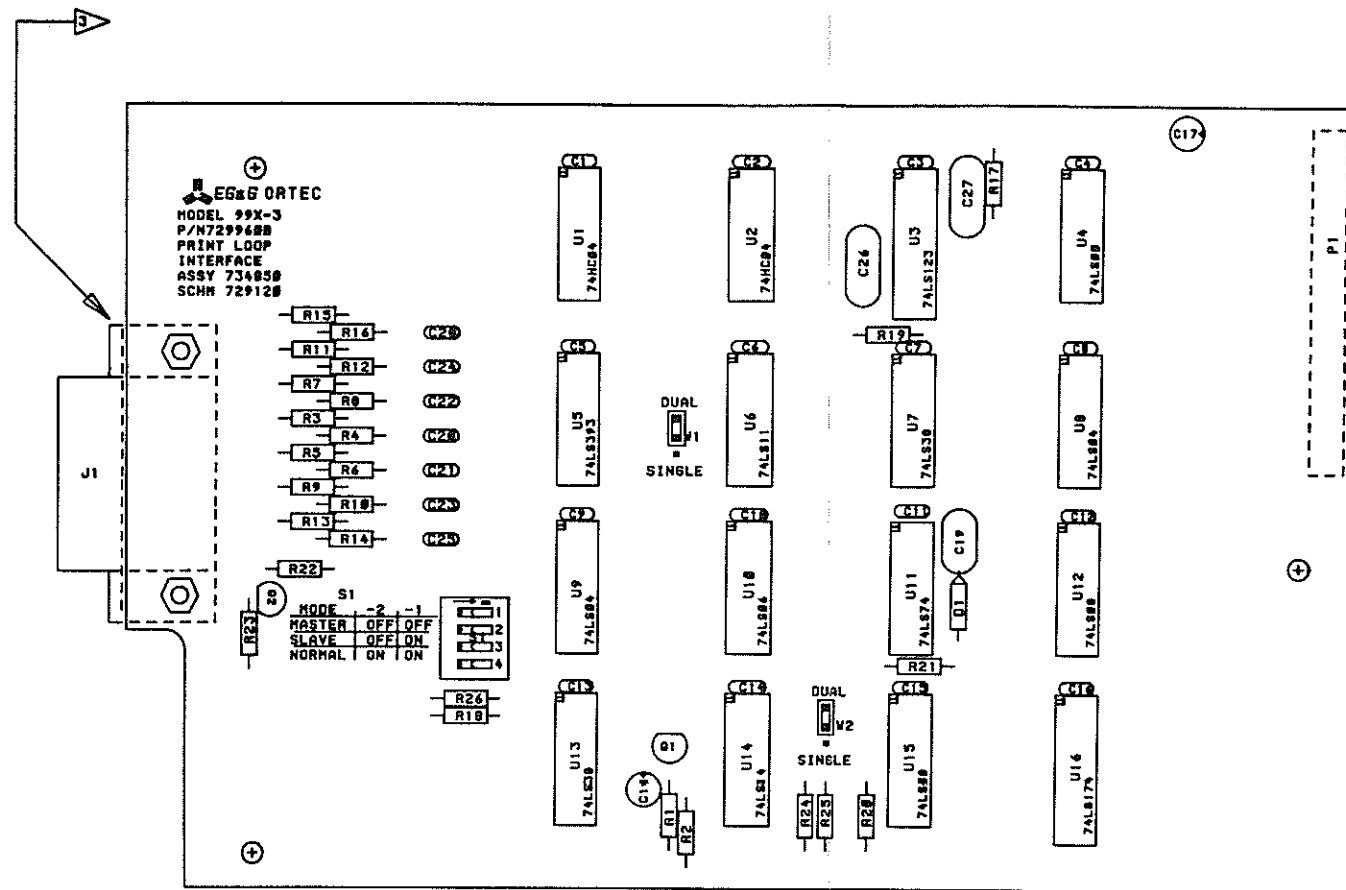
C

B


A

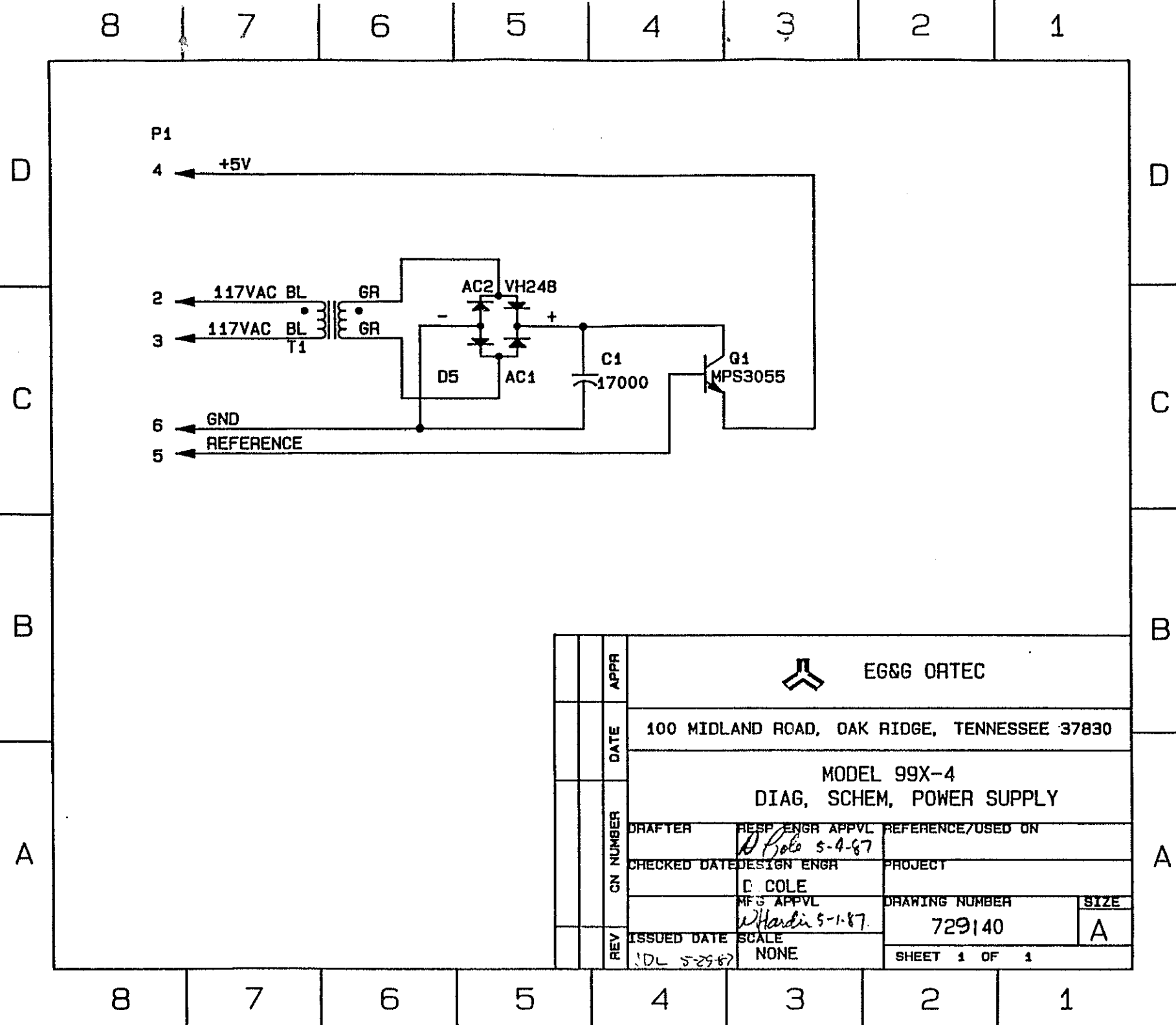
NOTES UNLESS OTHERWISE SPECIFIED:

1. ASSEMBLE COMPONENTS IN ACCORDANCE WITH EG&G ORTEC WORKMANSHIP STANDARDS SECTION 4, PC ASSEMBLY.
 2. SOLDER PER ORTEC WORKMANSHIP STANDARD SECTION 5.
3. COMPONENT MOUNTED FAR SIDE



QTY	REV	DATE	BY	CHKD	APP'D	DESCRIPTION
1	1	10/1/88	JTB			PRINT LOOP
EG&G ORTEC						
100 NICHOLAND ROAD, OAK RIDGE, TENNESSEE 37830						
MODEL 99X-3						
PWB ASSY, PRINT LOOP INTFC						
734850						
2/1						

QTY REQD	PART OR NO.	PART OR IDENTIFYING NUMBER	DESCRIPTION OR DESCRIPTION	REMARKS
8-31-57-23-2	APPR	UNLESS OTHERWISE SPECIFIED DIMENSIONS IN INCHES DO NOT SCALE THIS DRAWING		
		 EGGS ORTEC		
8-31-57-23-2	DATE	FRACTIONS	DECIMALS	ANGLES
		100 MIDLAND ROAD, OAK RIDGE, TENNESSEE 37830		
8-31-57-23-2	REV	ECH NUMBER	MODEL 99X-3 DIAS, SCHEM, PRINT LOOP INTERFACE	
			PART OR NO. 734850 PART OR NO. 994 PART OR NO. 729120	
8-31-57-23-2	REV	ECH NUMBER	PART OR NO. 734850 PART OR NO. 994 PART OR NO. 729120	
			PART OR NO. 734850 PART OR NO. 994 PART OR NO. 729120	
APPLIED PRACTICES				



		APPR	EG&G ORTEC	
		DATE	100 MIDLAND ROAD, OAK RIDGE, TENNESSEE 37830	
			MODEL 99X-4	
			DIAG, SCHEM, POWER SUPPLY	
	DRAFTER	DESIGN ENGR	APPVL	REFERENCE/USED ON
	CHECKED DATE	DESIGN ENGR		PROJECT
	ISSUED DATE	SCALE	DRAWING NUMBER	SIZE
	5-29-67	NONE	729140	A
			SHEET 1 OF 1	