

# Miniature Precision Regulated HV Supply

0 to  $\pm 2,500$  through 0 to  $\pm 4,000$  VDC @ 1 Watt  
C Series



The C Series is a line of miniature, precision regulated high voltage supplies featuring excellent stability and low ripple. The output voltage is programmable via a 0 to 5 volt programming voltage. Temperature drift is typically less than 50 PPM/°C. These models exhibit very low ripple, noise, and EMI/RFI by utilizing a quasi-sinewave oscillator, excellent filtering techniques and an isolated steel

enclosure featuring a separate grounding pin. An externally accessible potentiometer provides adjustable gain trim allowing for individual calibration of units. Positive and negative outputs are standard. Delivery of small quantities is from stock. Call, fax, or e-mail your requirements for immediate attention. Technical assistance is readily available.

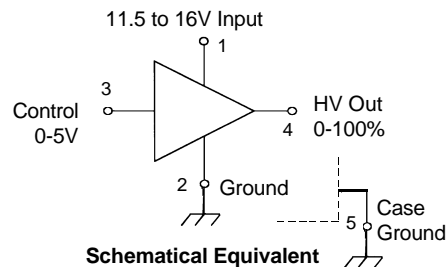
## FEATURES

- High Stability, <50 PPM/°C typically
- 0 to 100% Programmable Output
- Ultra-Miniature Size
- Low Ripple
- External Gain Adjust
- Steel Case with Isolated Ground
- Wide Input Voltage Range
- Very Low EMI/RFI
- PCB Mountable
- High Performance/Low Cost

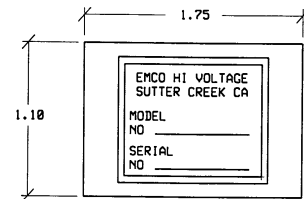
## APPLICATIONS

- Photomultiplier Tubes
- Avalanche Photodiodes
- Image Intensifiers
- Electrophoresis
- Q-Switches
- Grid Bias
- Solid State Detectors
- Portable Equipment

MODEL	OUTPUT VOLTAGE	OUTPUT CURRENT	TYPICAL INPUT CURRENT		RIPPLE	
			NO LOAD	FULL LOAD	NO LOAD	FULL LOAD
C25	0 to 2,500	0.4 mA	50mA	160mA	0.02%	0.1%
C25N	0 to -2,500	0.4 mA	50mA	160mA	0.02%	0.1%
C30	0 to 3,000	0.33 mA	60mA	170mA	0.02%	0.1%
C30N	0 to -3,000	0.33 mA	75mA	185mA	0.02%	0.1%
C40	0 to 4,000	0.25 mA	70mA	160mA	0.025%	0.1%
C40N	0 to -4,000	0.25 mA	75mA	190mA	0.05%	0.1%



Schematic Equivalent

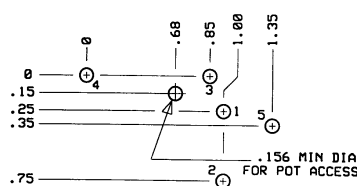


## PHYSICAL CHARACTERISTICS

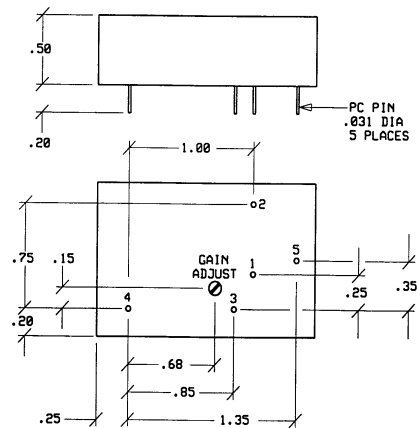
SIZE: 1.75" x 1.1" x 0.5" (44 x 27.5 x 12.5 mm)  
WEIGHT: 1.4 Ounce (40 Grams)  
PACKAGING: Epoxy Encapsulated  
CASE MATERIAL: Zinc Plated Steel  
PINS: 0.03" Diameter, 0.2" Long (0.76 x 5 mm)

PIN #	FUNCTION
1	Input
2	Ground
3	Control Volt 0-5 V
4	Output
5	Case

Dimensional Tolerances:  $\pm 0.03$



PC Layout Pattern  
Component Side



## ELECTRICAL SPECIFICATIONS

INPUT VOLTAGE: 11.5 to 16 Volts  
INPUT CURRENT, FULL LOAD: See Table  
OUTPUT VOLTAGE: See Table  
OUTPUT CURRENT: See Table  
CONTROL VOLTAGE: 0 to 5 Volts, <50  $\mu$ A  
RIPPLE: See Table  
REGULATION, LINE AND LOAD: 0.25%  
OPERATING TEMP: -10° to +60° C