

SPECIFICATIONS

Mechanical

Contact Mating Force: 8.5kg (18.7Lb) max.
Contact Unmating Force: 0.5kg (1.1Lb) min.
Contact Retention Force: 1.82kg (4.0Lb) min.

Electrical

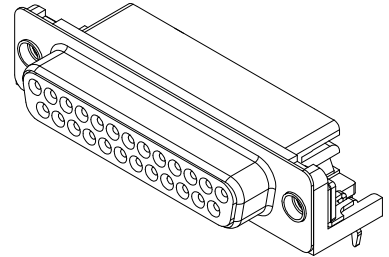
Current Rating: 2.0A
Contact Resistance: 35mW max.
Dielectric Withstanding Voltage: 1000V AC/1min min.
Insulation Resistance: 5000MW

Physical

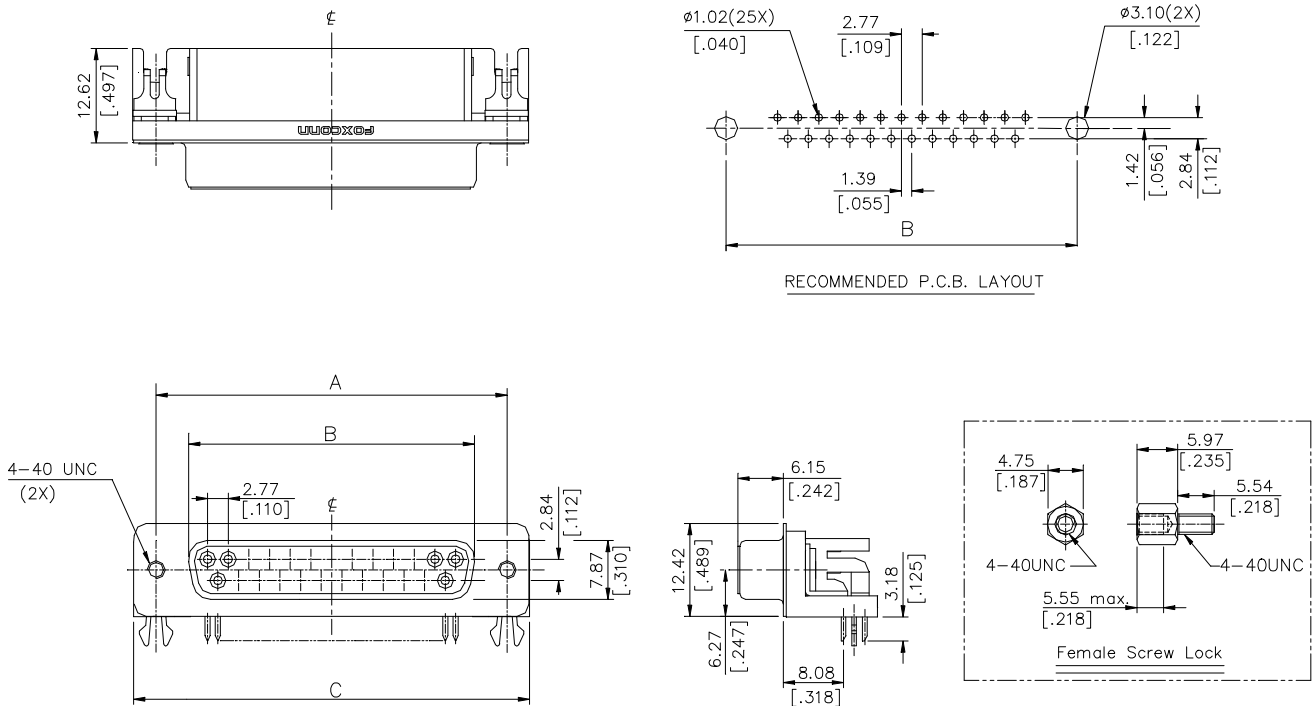
Housing: Thermoplastic, UL 94V-0 rated in Black Color
Contact: Copper alloy
Plating: See "ORDERING INFORMATION"
Solder Pad: Copper alloy
Operating Temperature: -55 to +105

D-SUB Connector

DT Series
Right Angle Type, T/H
2.77mm [.109"] Pitch
25 Pos.



DRAWING



ORDERING INFORMATION

PRODUCT NO.: DT 1 1 3 2 *- H4R*- 4F

D-sub Series _____
 Body Type _____
 1=Right Angle PCB Mount
 Termination Type _____
 1=Female
 No. of Pos. _____
 3=25 Pos.
 Body Length _____
 2=8.08 mm

Lead Free Code _____
 Extension Code _____
 H4R2=W/O Female Screw Lock
 H4R3=W/ Female Screw Lock
 Contact Area Plating _____
 1=Gold Flash
 3=30u" Gold

DT1132*	47.04 [1.852]	38.35 [1.510]	53.04 [2.088]
P/N	DIM. A	DIM. B	DIM. C