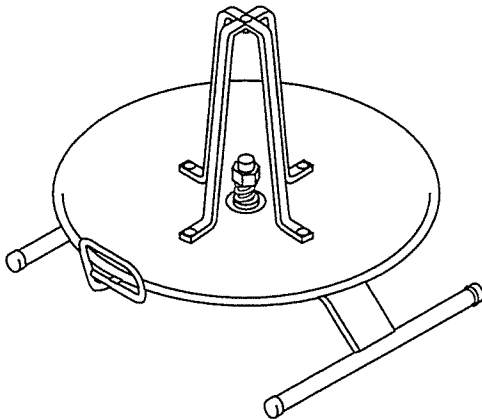
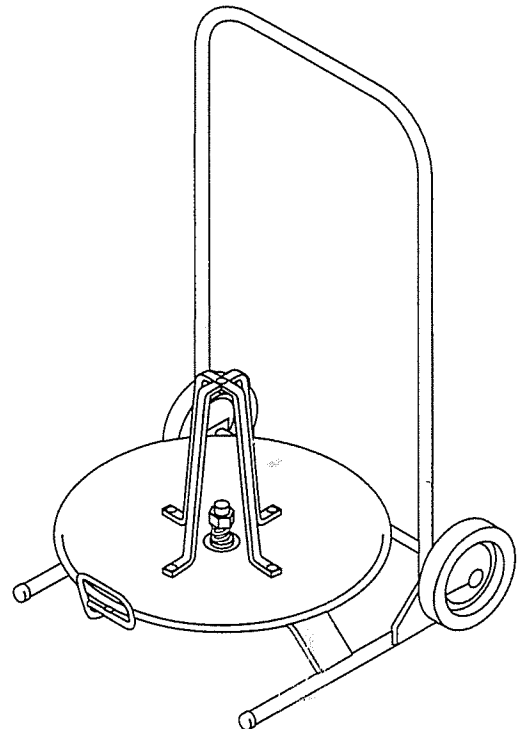


OPERATION, SERVICE AND PARTS INSTRUCTION MANUAL

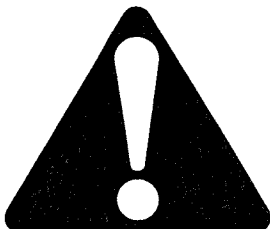
Hall A



37218
BX-ARMORED CABLE
DISPENSER



37202
BX-ARMORED CABLE
DISPENSER/TRANSPORTER



Read and **understand** this material before operating or servicing this tool. Failure to understand how to safely operate the tool could result in an accident causing serious injury or death. This tool should only be operated by qualified personnel.



**SAFE
OPERATING
PRACTICES**

***SAVE THESE
INSTRUCTIONS!***

Design Capacities

**37202 BX-Armored Cable
Dispenser/Transporter**

Three (3) 250' Coils of 14/2, 14/3, 12/2, 12/3
Armored Cable, Steel or Aluminum, or Unboxed
Romex.

37218 BX-Armored Cable Dispenser

One (1) 250' Col of 14/2, 14/3, 12/2, 12/3 Armored
Cable, Steel or Aluminum, or Unboxed Romex.

Features


- Can transport three (3) 250' coils, but dispense only one coil at a time (37202).
- Large wheels for easy mobility (37202).
- Fits through 30" doorway.
- Rotates freely for smooth feeding.
- Feeding eye rotates fully for pulling in any direction.
- The 37202 includes long handle for extra balance when transporting.
- All metal construction for durability.

Instructions for Use

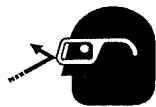
1. Place coil on plate over center guides. Remove Coil straps or wires. For Romex, remove from box before placing on unit.
2. Find free end of cable on outside of coil, then feed through guide.
3. Adjust feeding resistance by turning hex nut located at the center of the plate to desired drag.

**Other Greenlee Products for Use with Armored
Cable:**

- 1940 BX-Cutter
- 916 Cable Reel Transporter

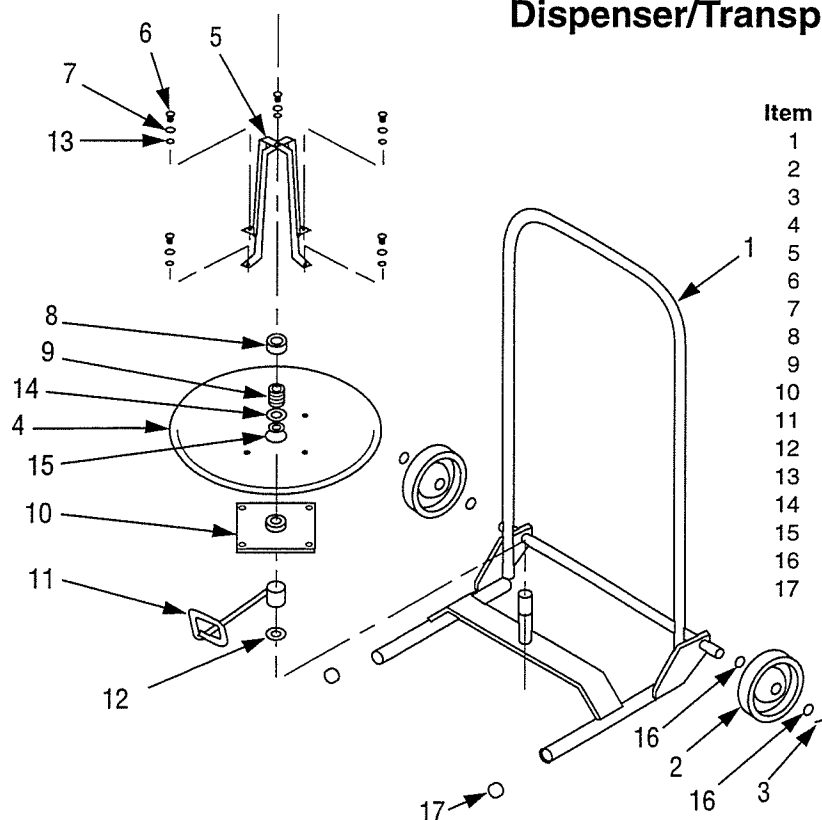
	⚠ CAUTION
	Do not stand on units. Dispenser will spin or tip, resulting in a fall causing injury.

⚠ CAUTION
Do not exceed the design capacity of the dispenser. Use to transport rated materials only. Transporting other materials may lead to failure of the dispenser, resulting in personal injury or property damage.

	⚠ CAUTION
	Wear safety glasses. Eye injury may occur.

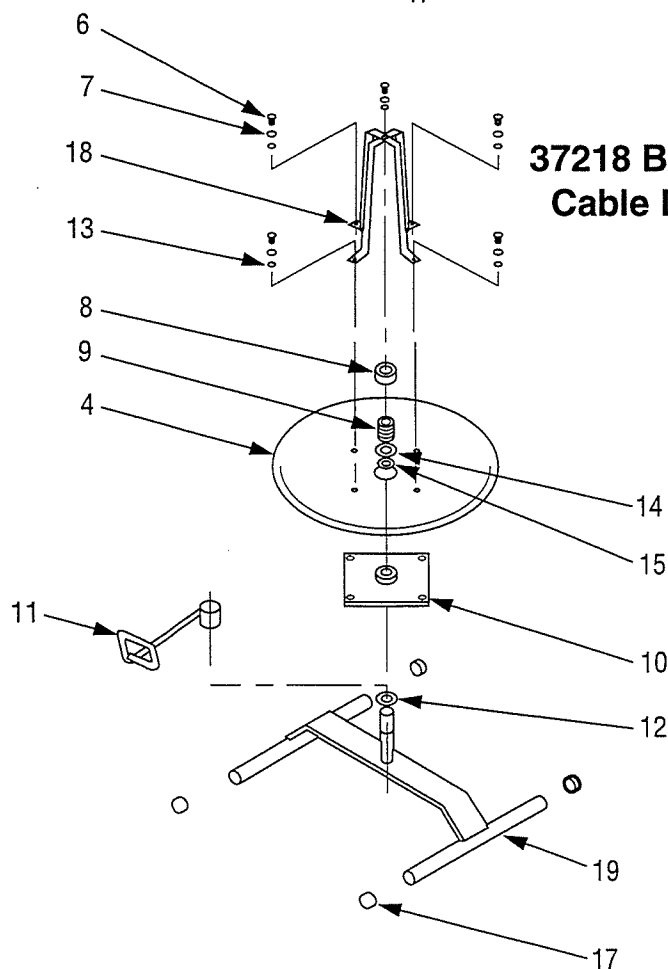
⚠ CAUTION
<ul style="list-style-type: none">• Do not overload units. Maximum weight to be transported is 250 lbs.• Remove cable before transporting or moving the 37218 dispenser.• Use proper lifting techniques to load cable onto dispensers.• Keep clear of rotating dispenser when in use. <p>Failure to observe could cause personal injury or property damage.</p>

37202 BX-Armored Cable Dispenser/Transporter



Item	Qty.	Part No.	Description
1	1	50372033	Frame Weldment
2	2	90515099	Wheel
3	2	90506553	Pin, 1/8 x 1-1/4 Cotter
4	1	50372106	Plate, Turntable
5	2	50372114	Bracket, Center
6	5	90541340	Bolt, 5/16 - 18 x .875 Carriage
7	5	90516028	Washer, 5/16 Lock
8	1	90547675	Nut, 1 - 8 Hex
9	1	50342720	Spring, Compression
10	1	50372122	Support Wlmt., Plate
11	1	50372130	Guide Weldment
12	1	90525981	Washer, Thrust
13	5	90506383	Nut, 5/16 - 18 Hex
14	1	90525701	Washer, 1 x 1-1/2 x .041 Flat
15	1	90541359	Washer, 1 x 1-1/2 x .041 Nylon
16	4	90517407	Washer, Flat
17	2	90541367	Cap, Tubing

37218 BX-Armored Cable Dispenser



Item	Qty.	Part No.	Description
4	1	50372106	Plate, Turntable
6	5	90541340	Bolt, 5/16 - 18 x .875 Carriage
7	5	90516028	Washer, 5/16 Lock
8	1	90531914	Nut, 1-14 Hex
9	1	50342720	Spring, Compression
10	1	50372122	Support Wlmt., Plate
11	1	50372130	Guide Weldment
12	1	90525981	Washer, Thrust
13	5	90506383	Nut, 5/16 - 18 Hex
14	1	90525701	Washer, 1 x 1-1/3 x .041 Flat
15	1	90541359	Washer, 1 x 1-1/2 x .041 Nylon
17	4	90541367	Cap, Tubing
18	2	50372114	Bracket, Center
19	1	50372190	Frame Weldment

GREENLEE TEXTRON

Greenlee Textron Inc. / Subsidiary of Textron Inc.

4455 Boeing Drive, Rockford, IL 61109-2988 USA

General Offices: 815/397-7070

Customer Center and Field Service: 800/435-0786

Fax (24 Hour) Customer Center: 800/451-2632 • 815/397-1865

Canada Fax (24 Hour) Customer Center: 800/524-2853

Printed in U.S.A.