

Phone: 1-800-356-7483
Fax: 1-215-357-9239

Website: www.keyinstruments.com
E-mail: sales@keyinstruments.com

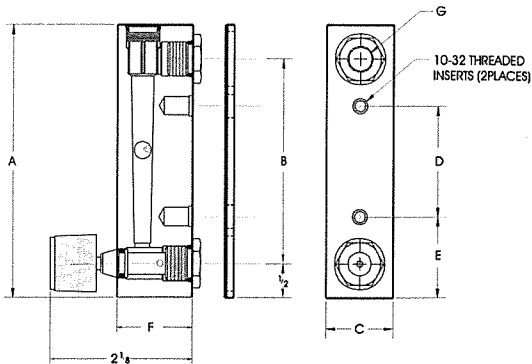
REASSEMBLY

Check to make sure that all parts are clean and dry. To lubricate the o-rings, apply a small amount of halocarbon grease prior to reassembly. If applicable, reinstall the rod guide assembly into the flowmeter body. Make sure the rod guide is seated firmly in the body of the meter. Reinstall the top plug, making sure

that the rod guide is properly aligned. Tighten top plug until it's flush with top of acrylic body. Exceeding this may damage the meter body.

If you have any questions regarding the installation, maintenance or use of this flowmeter, please call the Customer Service Department at 1-800-356-7483.

DIMENSIONS		FR2000	FR4000	FR4500
A	IN.	4	6 1/2	6 5/8
	mm	102	165	168
B	IN.	3	5 1/2	5 1/2
	mm	76.2	140	140
C	IN.	1	1 3/8	1 1/8
	mm	25.4	34.9	28.6
D	IN.	1 5/8	3 1/2	3 1/2
	mm	41.3	88.9	88.9
E	IN.	1 3/16	1 1/2	1 1/2
	mm	30.2	38.1	38.1
F	IN.	1 1/8	1 1/8	1 3/8
	mm	28.6	28.6	34.9
G	IN.	1/8-27	1/8-27	1/4-18
	mm	MNPT	MNPT	MNPT



FR2000 SERIES FLOW RATES			
RANGE	MODEL	RANGE	MODEL
SCFH OF AIR	CODE	LPM OF AIR	CODE
.1-1	2A01	.04-5	2A12
.2-2	2A01	.1-1	2A13
.4-5	2A02	.2-2.5	2A29
1-10	2A03	.4-5	2A14
2-20	2A04	1-10	2A15
3-30	2A05	2-25	2A16
4-50	2A06	4-50	2A17
10-100	2A07	10-100	2A18
20-200	2A08		
CCM OF WATER	CODE	GPH OF WATER	CODE
5-50	2L09	.2-2	2L28
10-100	2L10	.4-5	2L19
20-240	2L11	1-10	2L20
		2-20	2L21
		4-40	2L22

FR4500 SERIES FLOW RATES *			
RANGE	MODEL	RANGE	MODEL
SCFM OF AIR	CODE	LPM OF AIR	CODE
.5-5	4A67	14-140	4A72
1-10	4A65	30-300	4A70
4-20	4A68	100-560	4A73
GPM OF WATER	CODE	LPM OF WATER	CODE
.25-2.5	4L64	1-10	4L69
.5-5	4L66	2-20	4L71

*Does not include 1/8" backplate.

FR4000 SERIES FLOW RATES			
RANGE	MODEL	RANGE	MODEL
SCFH OF AIR	CODE	CCM OF WATER	CODE
.4-5	4A30	4-50	4L38
1-10	4A31	10-120	4L56
2-20	4A32	25-225	4L51
4-40	4A33	40-400	4L50
10-100	4A34	40-660	4L52
14-150	4A35	100-1500	4L53
20-200	4A36	200-3000	4L54
		300-3700	4L55
CCM OF AIR	CODE	GPH OF WATER	CODE
100-1000	4A39	1-10	4L45
LPM OF AIR	CODE	2-25	4L48
.4-5	4A40	4-50	4L49
1-10	4A41	6-60	4L46
2-20	4A42		
3-30	4A43	SCFM OF AIR	CODE
4-50	4A44	.3-3	4A37
10-100	4A47		

CONTINUED PRODUCT IMPROVEMENT MAY RESULT IN SPECIFICATION REVISIONS

WHEN ORDERING PARTS PLEASE INCLUDE PART DESCRIPTION, ITEM NUMBER AND TYPE OF MATERIAL REQUIRED.