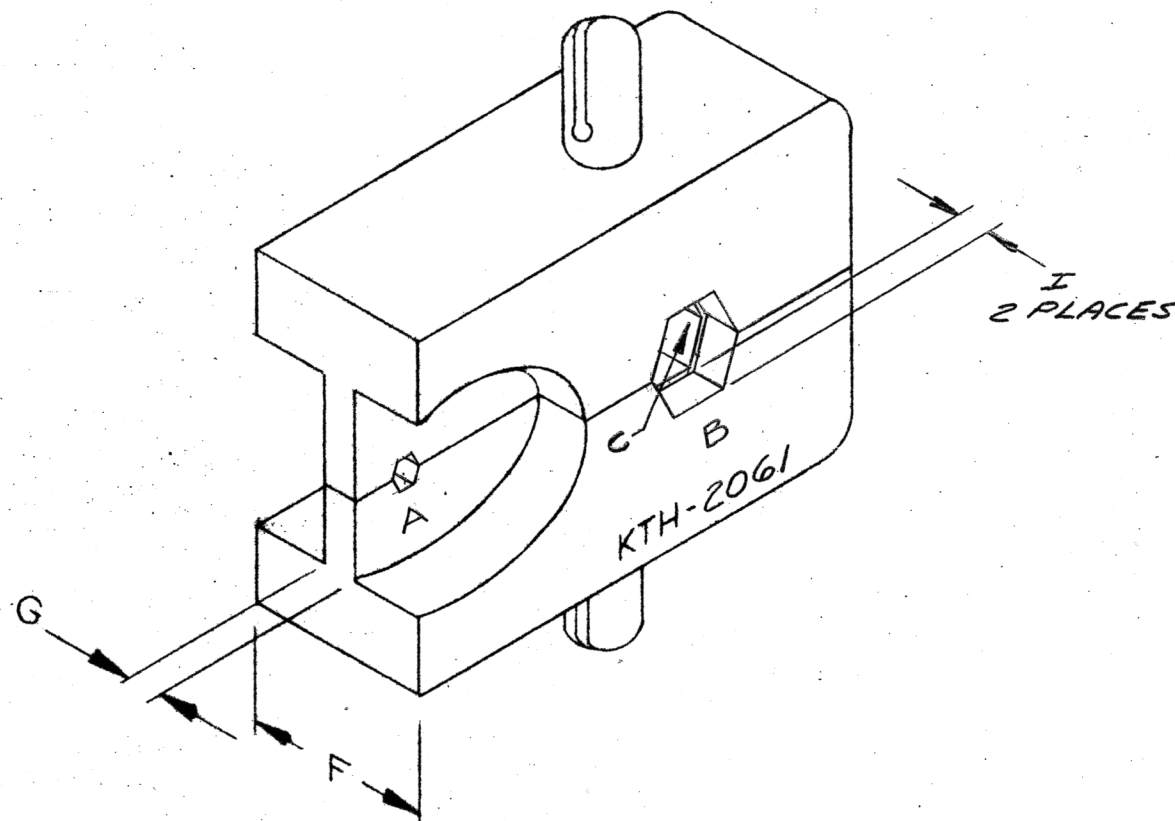




Kings Part	Military Part	Gender	Dimensions (in inches)				Cable Group	Cross Reference To:	Cable Procedure	
KTH-2061			0.069		0.213			Connector	NONE	



NOTES:

1. FOR USE WITH RG-55, 58, 141, 142, 223 & ITT BA 13077A CABLE GROUPS.

HEX SIZES (ACROSS FLATS)				DIE WIDTH	WEB WIDTH			
A	B	C	D	F	G	H	I	
.069	.253	.213		.500	.080		.083	

UNLESS OTHERWISE SPECIFIED:

1. TOLERANCES: FRACTIONS & 2 PLACE DECIMALS $\pm .010$
 3 PLACE DECIMALS $\pm .004$
 ANGLES $\pm 0^\circ 30'$
 T. I. R. CONCENTRICITY OF ANY 2 DIAMETERS MAY NOT
 EXCEED HALF THE SUM OF THEIR TOLERANCES.

2. REMOVE ALL BURRS, BREAK SHARP EDGES .005 MAX.
 3. NO FILLETS PERMITTED.
 4. SURFACE ROUGHNESS 63 MICROINCHES RMS MAX.
 5. ALL DIMENSIONS PRIOR TO PLATING.

REVISIONS

ISSUE	CHANGES
2	CN 27545 C SD 7/NOV 85

REF:

FINISH

SPEC.

MATL.

SPEC.

CRIMP DIE

DRAWN BG.

DATE 13 OCT 72

APPR.

DATE

KINGS ELECTRONICS

40 MARBLEDALE ROAD
 TUCKAHOE, N. Y. 10707

KTH-2061

S.D.