



2001

Standard Cruiser

Model #V01CB15(CC)(CG)(CJ)

Model #V01CB15(DA)(DC)(DG)(DJ)

Model #V01CB15(LC)(LG)(LJ)

Model #V01CB15(UC)(UG)(UJ)



TABLE OF CONTENTS

Standard Cruiser V01CB15(CC)(CG)(CJ)(DA)(DC)(DG)(DJ)(LC)(LG)(LJ)(UC)(UG)(UJ)
Parts Manual

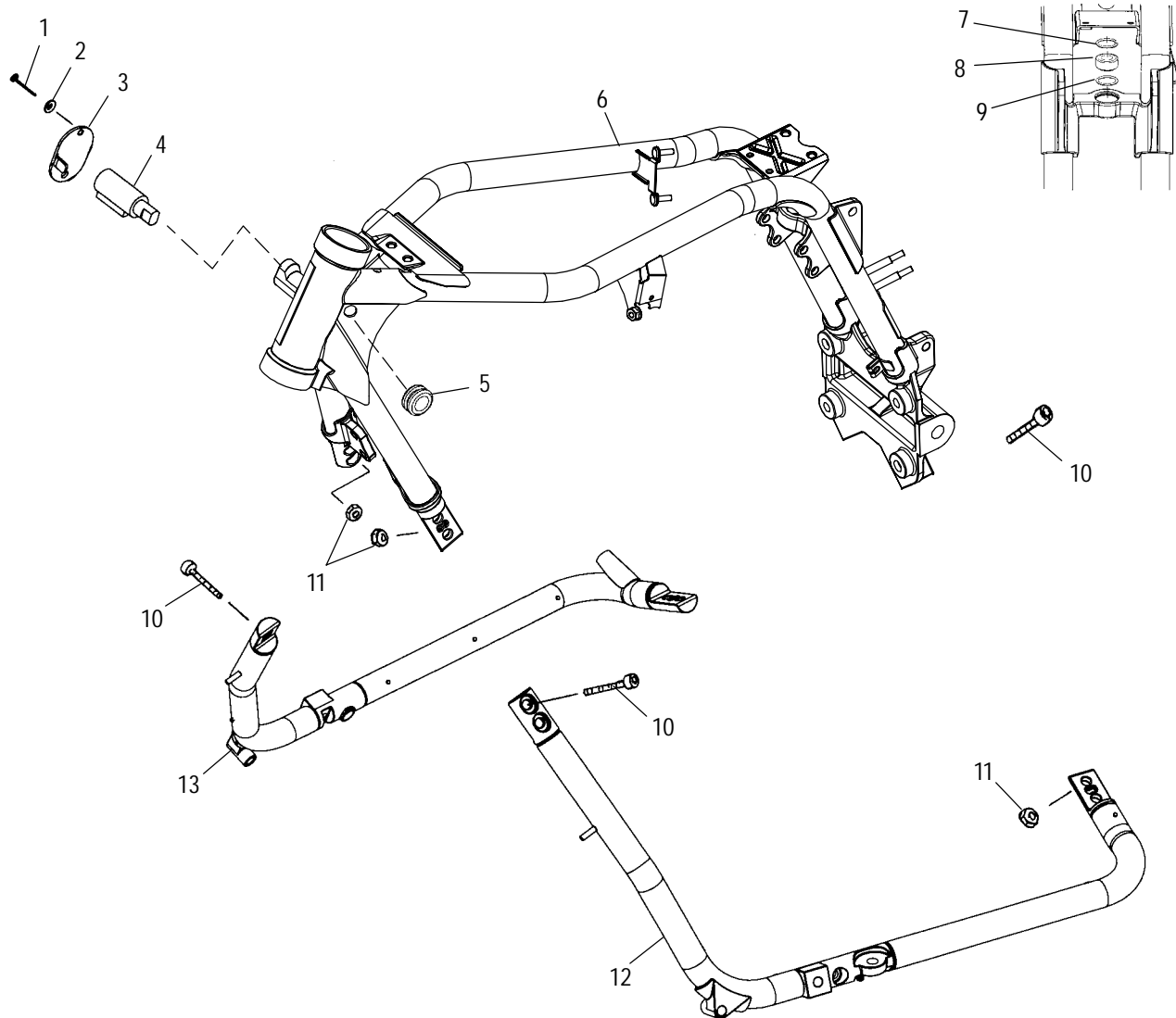
A		H	
AIR BOX	B13	HEADLIGHT	A13
B		M	
BATTERY BOX	B4	MAIN FRAME	A3
C		MIRRORS and FRONT FENDER	A10
CAM and VALVE COVERS	C7	O	
CAMCHAIN and TENSIONER	C6	OIL COOLING	B10
CRANKCASE	C2	OIL PUMP	C9
CRANKCASE BEARINGS	C3	OIL PUMP MOUNTING	C8
CRANKSHAFT	C1	P	
CYLINDER and HEAD	C4	PRIMARY COVER	C11
D		PRIMARY DRIVE	C10
DECALS	B6	R	
DRIVE CLUTCH	C14	REAR BRAKE	B2
E		REAR SHOCK	B3
ECM BOX and TOOL KIT	B5	REAR WHEEL	A12
ELECTRICAL	B8-9	S	
ENGINE MOUNTING	B14	SEAT	B7
EVAP SYSTEM	D4	SHIFT FORKS/DRUM	C12
EXHAUST SYSTEM	B11	SHIFT LEVER	A7
F		STARTER MOTOR	D3
FLOOR BOARD and SIDE STAND ...	A6	SUBFRAME and REAR FENDER	A4
FRONT BRAKE	B1	SWING ARM	A5
FRONT DRIVE SPROCKET	B12	T	
FRONT FORKS	A9	TAILLIGHT and TURN SIGNAL	A14
FRONT WHEEL	A11	TRANSMISSION	C13
FUEL SYSTEM	D1-2	V	
H		VALVE TRAIN	C5
HANDLEBAR	A8		

The illustrations used in this Parts Manual are for reference to replacement parts only. This manual is not to be used for assembly.

MAIN FRAME

STANDARD CRUISER V01CB15CC and STANDARD CRUISER V01CB15CG and STANDARD CRUISER V01CB15CJ and STANDARD CRUISER V01CB15DA and STANDARD CRUISER V01CB15DC and STANDARD CRUISER V01CB15DG and STANDARD CRUISER V01CB15DJ and STANDARD CRUISER V01CB15LC and STANDARD CRUISER V01CB15LG and STANDARD CRUISER V01CB15LJ and STANDARD CRUISER V01CB15UC and STANDARD CRUISER V01CB15UG and STANDARD CRUISER V01CB15UJ

E. 2000 Polaris Sales Inc.



Part numbers may have changed since this microfiche was issued. To ensure that correct parts are received, refer to the Electronic Catalog, which is updated monthly.

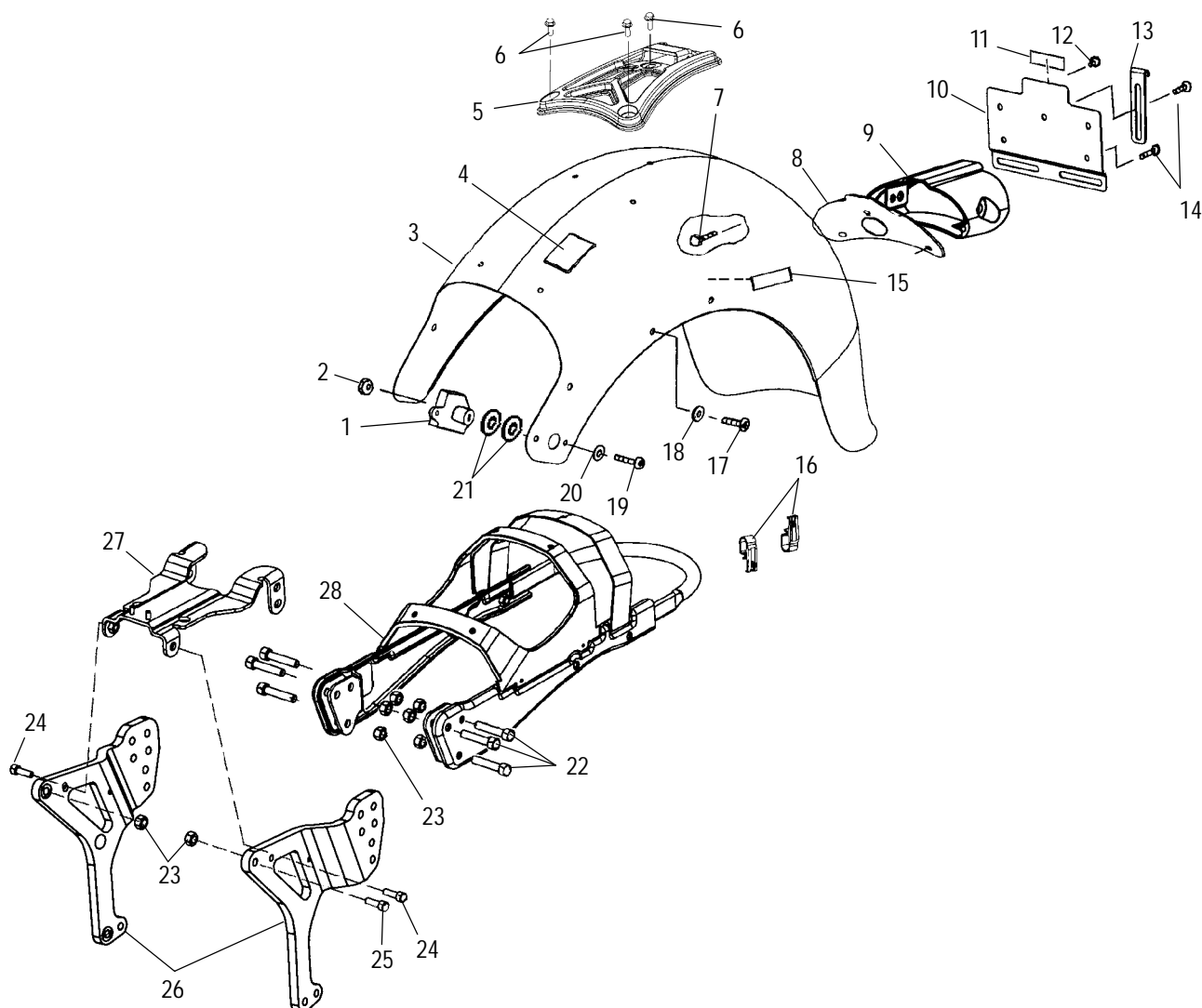
Ref.	Part No.	Qty.	Description
1	7661027	1	Pin, Knurled
2	7571637	1	Washer, Wave
3	5242202	1	Cap, Fork Lock
4	7010085	1	Lock, Front Fork
5	5411472	1	Grommet, Head Casting
6	1013233-067	1	Frame, Main
7	7710509	1	Ring, Retaining

Ref.	Part No.	Qty.	Description
8	3514353	1	Bearing, Spherical
9	7556185	1	Spacer
10	7517358	8	Screw
11	7547039	8	Nut
12	1013273-067	1	Tube, Frame, Lower, LH
	1013443-067	1	Tube, Frame, Lower, LH (Cal.)
13	1013288-067	1	Tube, Frame, Lower, RH

8/00

SUBFRAME and REAR FENDER

STANDARD CRUISER V01CB15CC and STANDARD CRUISER V01CB15CG and STANDARD CRUISER V01CB15CJ and STANDARD CRUISER V01CB15DA and STANDARD CRUISER V01CB15DC and STANDARD CRUISER V01CB15DG and STANDARD CRUISER V01CB15DJ and STANDARD CRUISER V01CB15LC and STANDARD CRUISER V01CB15LG and STANDARD CRUISER V01CB15LJ and STANDARD CRUISER V01CB15UC and STANDARD CRUISER V01CB15UG and STANDARD CRUISER V01CB15UJ



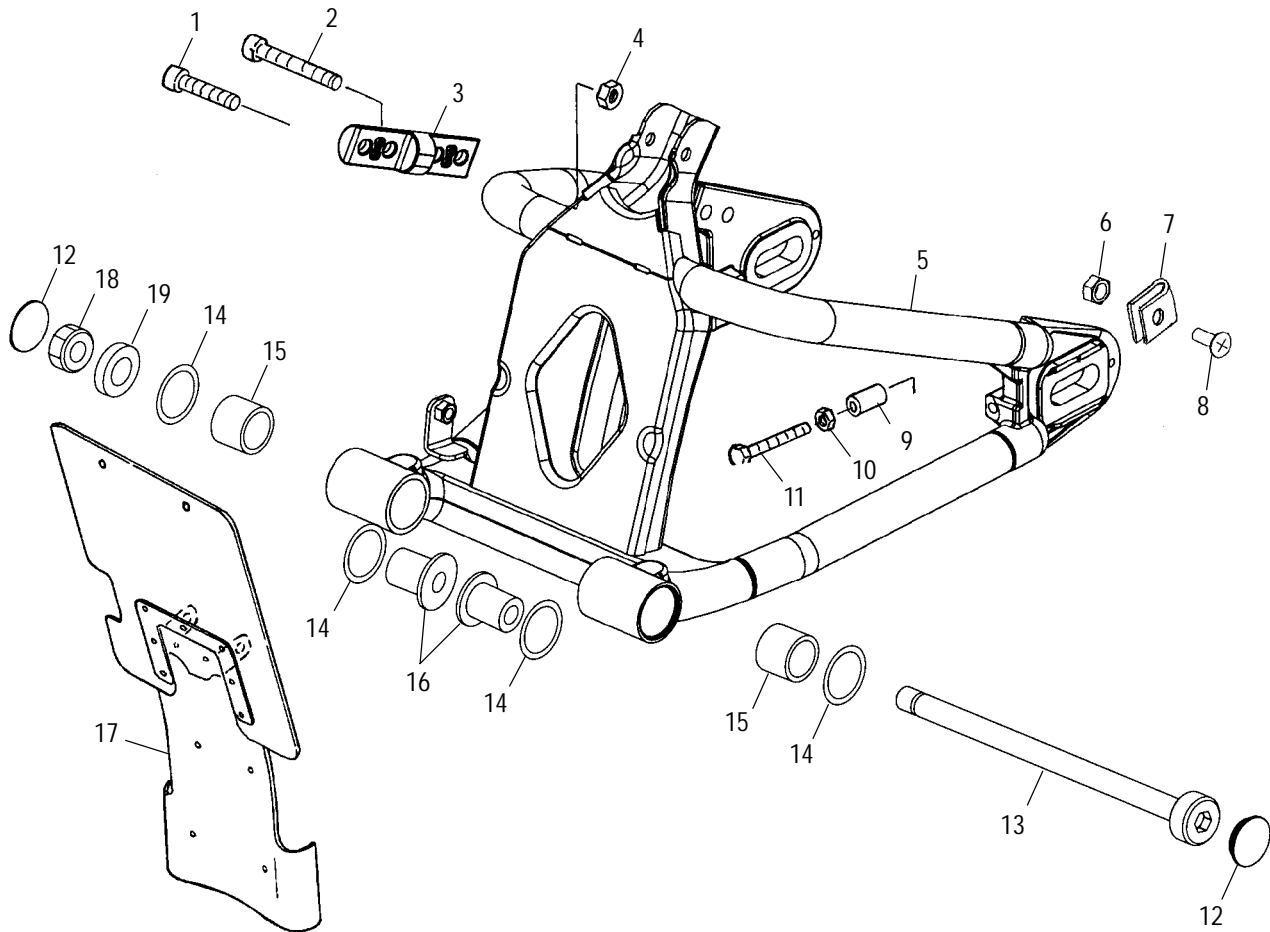
Part numbers may have changed since this microfiche was issued. To ensure that correct parts are received, refer to the Electronic Catalog, which is updated monthly.

Ref.	Part No.	Qty.	Description
1	7010088	1	Lock, Seat
2	7547120	2	Nut
3	1013025A9	1	Fender, Rear, Navy Blue/Cashmere
	1013025A6	1	Fender, Rear, Black/Steel Gray
	1013025-266	1	Fender, Rear, Cruiser Black
	1013025-265	1	Fender, Rear, Antares Red
4	5811941	4	Pad, Rubber, Tandem Seat
5	5433482	1	Bracket, Tandem Seat
6	7517750	3	Screw
7	7517886	3	Screw
8	5812043	1	Gasket, Tail Mount
9	5132513	1	Mount, Tail
10	1013289	1	Holder, License
11	5432992	1	Reflector, Rear, Red
12	5411323	2	Bumper, Grommet
13	5241885	1	Retainer, License Plate

Ref.	Part No.	Qty.	Description
14	7517494	3	Screw
15	5433865	2	Reflector, Red
16	7080737	5	Clip, Electrical
17	7517840	6	Screw
18	5132668	6	Bushing, Fender, Rear
19	7517355	2	Screw
20	7556064	2	Washer, Flat
21	5132374	2	Spacer
22	7516920	6	Screw
23	7547039	2	Nut
24	7517835	2	Screw
25	7517827	4	Screw
26	5244574	1	Subframe, LH
	5244575	1	Subframe, RH
27	1012961-067	1	Cover, Subframe
28	1013235	1	Subframe, Modular

SWING ARM

STANDARD CRUISER V01CB15CC and STANDARD CRUISER V01CB15CG and STANDARD CRUISER V01CB15CJ and STANDARD CRUISER V01CB15DA and STANDARD CRUISER V01CB15DC and STANDARD CRUISER V01CB15DG and STANDARD CRUISER V01CB15DJ and STANDARD CRUISER V01CB15LC and STANDARD CRUISER V01CB15LG and STANDARD CRUISER V01CB15LJ and STANDARD CRUISER V01CB15UC and STANDARD CRUISER V01CB15UG and STANDARD CRUISER V01CB15UJ



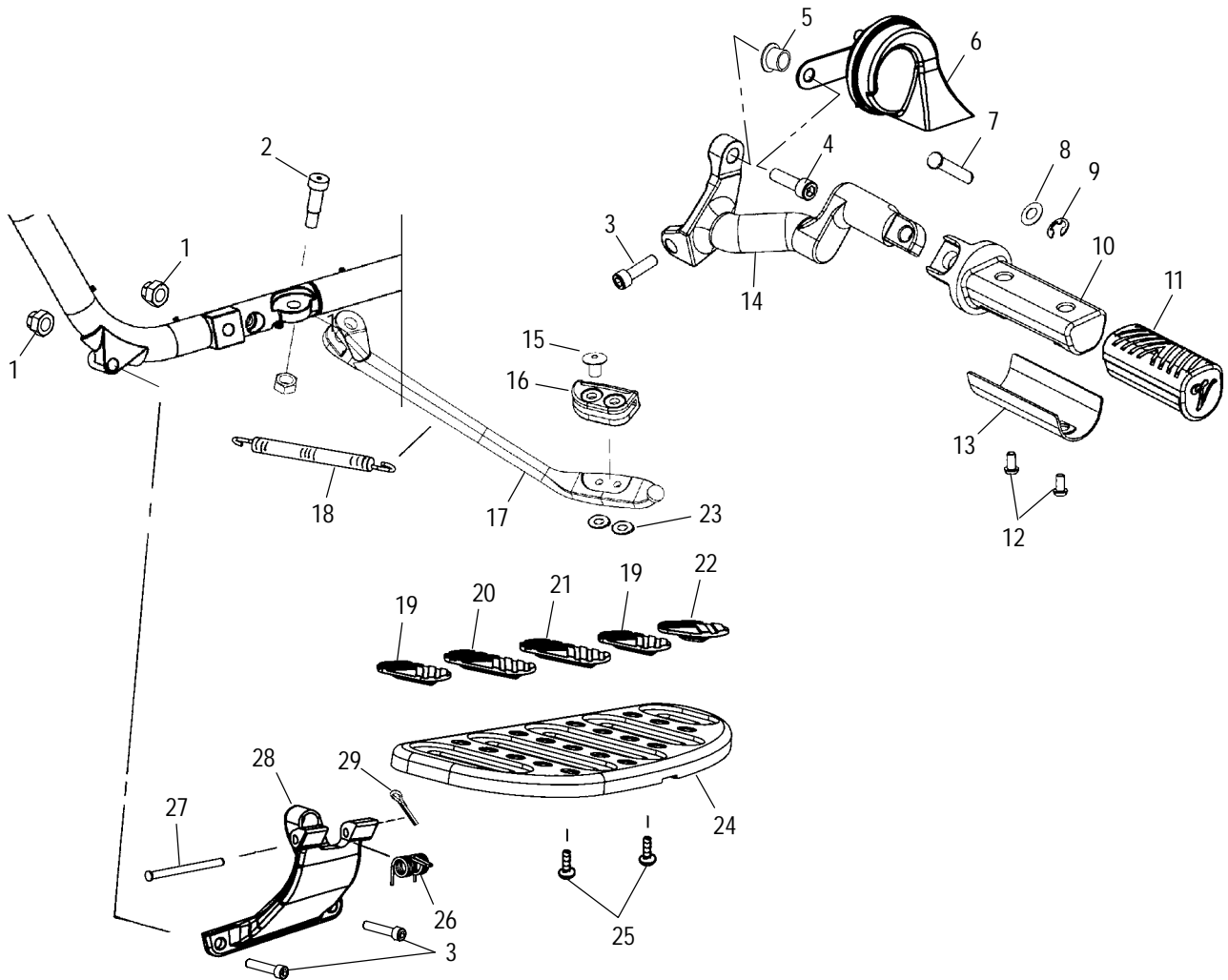
Part numbers may have changed since this microfiche was issued. To ensure that correct parts are received, refer to the Electronic Catalog, which is updated monthly.

Ref.	Part No.	Qty.	Description
1	7517358	2	Screw
2	7517712	2	Screw
3	1013255-067	1	Link
4	7547039	4	Nut
5	1013532-067	1	Arm, Swing
6	7547120	1	Nut
7	7080983	1	Clamp, Brake, Rear
8	7517705	1	Screw
9	5131908	2	Spacer, Swing Arm Alignment
10	7547076	2	Nut

Ref.	Part No.	Qty.	Description
11	7517508	2	Screw
12	5132481	2	Cap, Swing Arm Pivot
13	5132890	1	Shaft, Swing Arm Pivot
14	5411367	4	O-Ring
15	5432767	2	Bushing, Swing Arm
16	5010445	2	Sleeve, Swing Arm
17	1012719	1	Fender, Inner
18	7547048	1	Nut, FLEXLOC
19	7556021	2	Washer

FLOORBOARD and SIDE STAND

STANDARD CRUISER V01CB15CC and STANDARD CRUISER V01CB15CG and STANDARD CRUISER V01CB15CJ and STANDARD CRUISER V01CB15DA and STANDARD CRUISER V01CB15DC and STANDARD CRUISER V01CB15DG and STANDARD CRUISER V01CB15DJ and STANDARD CRUISER V01CB15LC and STANDARD CRUISER V01CB15LG and STANDARD CRUISER V01CB15LJ and STANDARD CRUISER V01CB15UC and STANDARD CRUISER V01CB15UG and STANDARD CRUISER V01CB15UJ



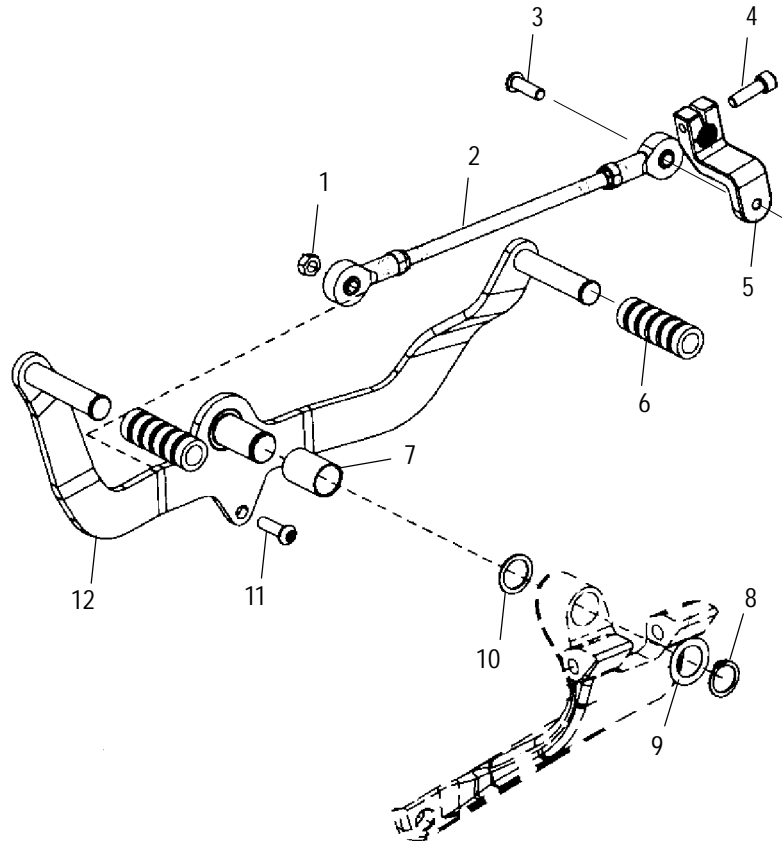
Part numbers may have changed since this microfiche was issued. To ensure that correct parts are received, refer to the Electronic Catalog, which is updated monthly.

Ref.	Part No.	Qty.	Description
1	7547039	5	Nut
2	7517404	1	Screw
3	7517526	2	Screw
4	7517554	1	Screw (LH Side Only)
5	5132658	1	Spacer
6	4010433	1	Horn
7	5131857	2	Pin, Passenger Footpeg
8	7556046	2	Washer, Spring
9	7710493	2	E-Clip
10	5132303	1	Footpeg, Passenger, LH
	5132304	1	Footpeg, Passenger, RH
11	5411333	1	Pad, Footpeg, Passenger, LH
	5411334	1	Pad, Footpeg, Passenger, RH
12	7517767	4	Screw
13	5243767-067	2	Cover, Footpeg
14	5244041-067	1	Support, Footpeg, Passenger, LH
	5244042-067	1	Support, Footpeg, Passenger, RH

Ref.	Part No.	Qty.	Description
15	7661064	2	Rivet
16	5411745	1	Pad, Side Stand
17	5910052	1	Stand, Side
18	7042047	1	Spring, Side Stand
19	5411267	4	Pad 1 and 4, Floorboard
20	5411268	2	Pad 2, Floorboard
21	5411269	2	Pad 3, Floorboard
22	5411270	2	Pad 5, Floorboard
23	7556121	2	Washer, Flat
24	5132228	1	Floorboard, LH
	5132229	1	Floorboard, RH
25	7517694	4	Screw
26	7041623	2	Spring, Floorboard Support
27	7661095	2	Pin, Floorboard Support
28	5132429-067	1	Support, Floorboard, LH
	5132430-067	1	Support, Floorboard, RH
29	7661094	2	Pin, Cotter

SHIFT LEVER

STANDARD CRUISER V01CB15CC and STANDARD CRUISER V01CB15CG and STANDARD CRUISER V01CB15CJ and STANDARD CRUISER V01CB15DA and STANDARD CRUISER V01CB15DC and STANDARD CRUISER V01CB15DG and STANDARD CRUISER V01CB15DJ and STANDARD CRUISER V01CB15LC and STANDARD CRUISER V01CB15LG and STANDARD CRUISER V01CB15LJ and STANDARD CRUISER V01CB15UC and STANDARD CRUISER V01CB15UG and STANDARD CRUISER V01CB15UJ



Part numbers may have changed since this microfiche was issued. To ensure that correct parts are received, refer to the Electronic Catalog, which is updated monthly.

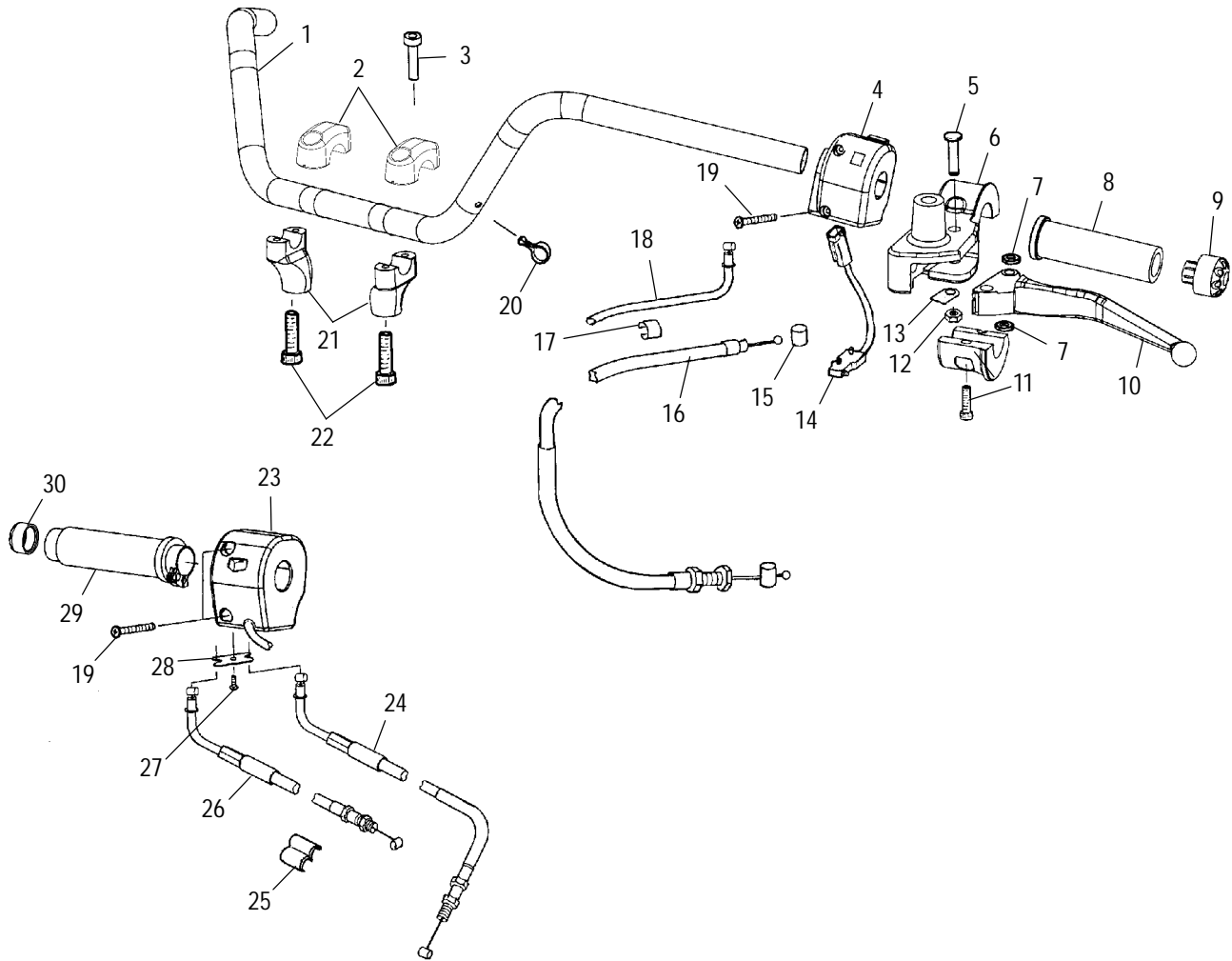
Ref.	Part No.	Qty.	Description
1	7547120	1	Nut
2	5132587	1	Rod, Shifter
3	7517355	1	Screw
4	7517506	1	Screw
5	5132114	1	Lever, Shifter
6	5411364	2	Pad, Shift Pedal

Ref.	Part No.	Qty.	Description
7	3514335	1	Bearing, Shift Pedal
8	7710499	1	Ring, Retaining
9	7556147	1	Washer, Flat
10	7556149	1	Washer, Wave
11	7517391	1	Screw
12	1013158	1	Pedal, Shifter

6/00

HANDLEBAR

STANDARD CRUISER V01CB15CC and STANDARD CRUISER V01CB15CG and STANDARD CRUISER V01CB15CJ and STANDARD CRUISER V01CB15DA and STANDARD CRUISER V01CB15DC and STANDARD CRUISER V01CB15DG and STANDARD CRUISER V01CB15DJ and STANDARD CRUISER V01CB15LC and STANDARD CRUISER V01CB15LG and STANDARD CRUISER V01CB15LJ and STANDARD CRUISER V01CB15UC and STANDARD CRUISER V01CB15UG and STANDARD CRUISER V01CB15UJ



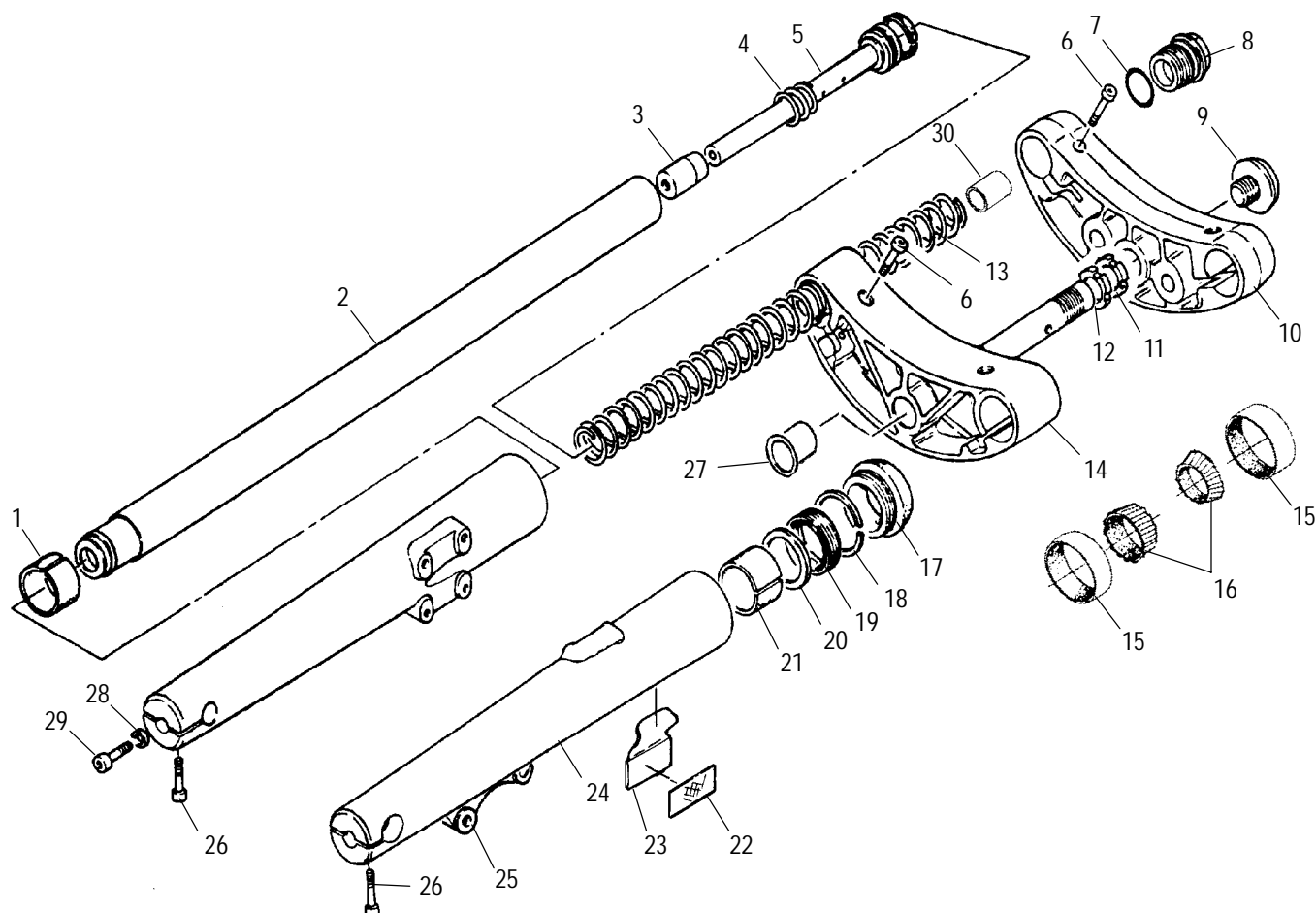
Part numbers may have changed since this microfiche was issued. To ensure that correct parts are received, refer to the Electronic Catalog, which is updated monthly.

Ref.	Part No.	Qty.	Description
1	5243728	1	Handlebar
2	5333903	2	Cap, Riser
3	7517361	4	Screw
4	4110240	1	Switch, Hand Control, LH
5	2201229	1	Kit - Lever Hardware (Incl. 7,12,13)
	5020946	1	Pin, Clutch Lever Screw
6	5131654	1	Bracket, Clutch/Mirror, LH
7	-----	2	Washer, Clutch Lever
8	5411256	1	Grip, Handlebar, LH
9	5432692	1	Cap, Handlebar End, LH
10	5131562	1	Lever, Clutch, Hand, LH
11	2201230	1	Kit - Clutch Clamp Hardware (Incl. Clamp and Screws)
	5131655	1	Cap, Clutch/Mirror
	7517305	2	Screw
12	-----	1	Nut, Nylok
13	-----	1	Clip, Switch
14	4110257	1	Switch, Safety, Clutch

Ref.	Part No.	Qty.	Description
15	5433071	1	Bushing, Clutch Cable, Upper
16	7080919	1	Cable, Clutch
17	5433070	2	Clip, Clutch, Cable, Fast Idle
18	7080716	1	Cable, Fast Idle
19	7517366	4	Screw
20	5433140	4	Dart, Handlebar
21	5132424	2	Riser, Handlebar
22	7517586	2	Screw
23	4110241	1	Switch, Hand Control, RH
24	7080724	1	Cable, Throttle, Push
25	5433039	2	Clip, Throttle Cables, Dual
26	7080725	1	Cable, Throttle, Pull
27	7517420	1	Screw
28	5242448	1	Retainer, Throttle Cable, Right
29	5411255	1	Grip, Throttle, Handlebar
30	5432715	1	Cap, Handlebar End, RH

FRONT FORKS

STANDARD CRUISER V01CB15CC and STANDARD CRUISER V01CB15CG and STANDARD CRUISER V01CB15CJ and STANDARD CRUISER V01CB15DA and STANDARD CRUISER V01CB15DC and STANDARD CRUISER V01CB15DG and STANDARD CRUISER V01CB15DJ and STANDARD CRUISER V01CB15LC and STANDARD CRUISER V01CB15LG and STANDARD CRUISER V01CB15LJ and STANDARD CRUISER V01CB15UC and STANDARD CRUISER V01CB15UG and STANDARD CRUISER V01CB15UJ



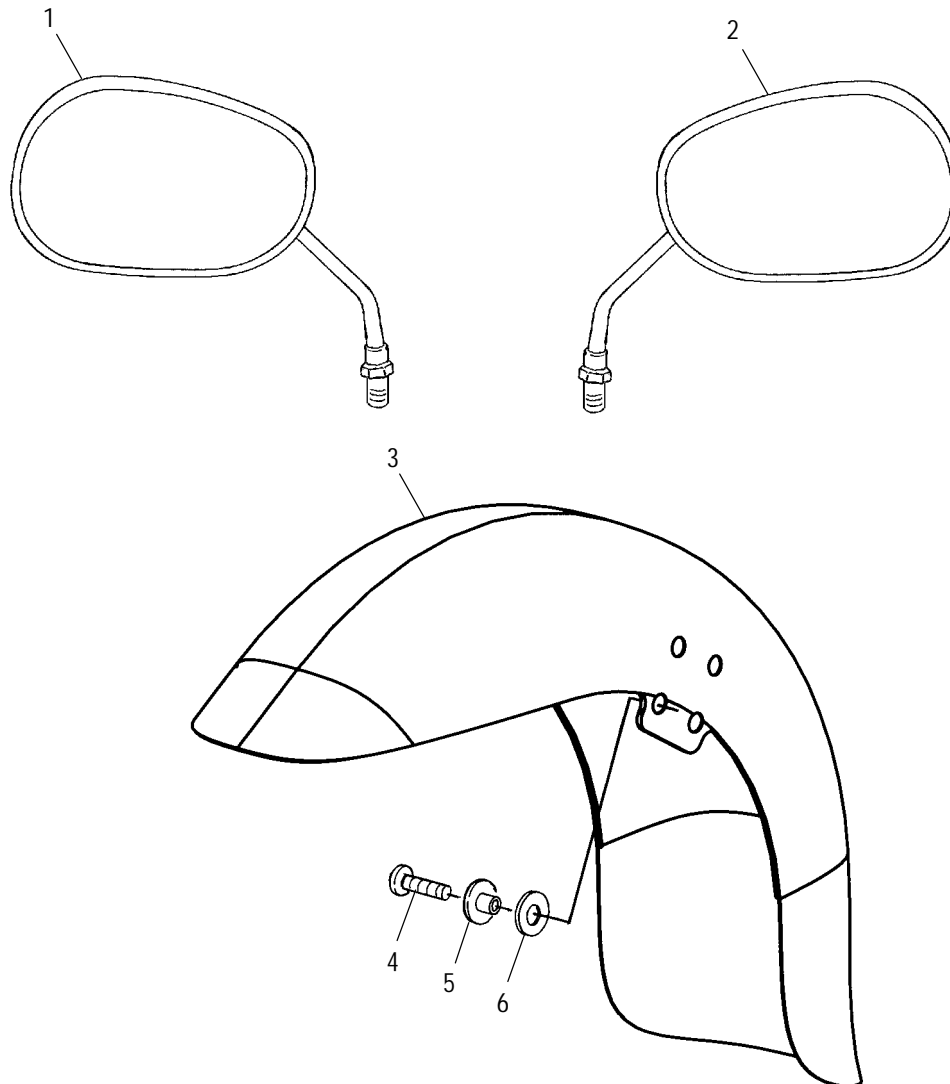
Part numbers may have changed since this microfiche was issued. To ensure that correct parts are received, refer to the Electronic Catalog, which is updated monthly.

Ref.	Part No.	Qty.	Description
	1820998	1	Asm., Fork Leg, LH (Incl. 1-5,7-8,13,17-21,24,26,28-30)
	1820999	1	Asm., Fork Leg, RH (Incl. 1-5,7-8,13,17-21,25,26,28-30)
	2872184	1	Oil, Fork
1	3585714	2	Bushing, Lower
2	5131505	2	Tube, Stanchion
3	5131498	2	Foot, Buffer
4	7041624	2	Spring, Rebound
5	2201888	2	Kit - Damper Rod/Ring
	5434228	2	Ring, Damper
	5334037	2	Rod, Damper
6	1500170	4	Screw
7	5411330	2	O-Ring
8	5131502	2	Plug, Fork
9	5131497	1	Bolt, Steering Post Cap
10	1820952	1	Asm., Clamp, Triple, Upper (Incl. 6)
11	5131953	1	Nut, Steering Post, Upper
12	5131496	1	Nut, Steering Post
13	7042026	2	Spring, Compression
14	1820927	1	Asm., Triple Clamp, Lower (Incl. 6,9,11,12)

Ref.	Part No.	Qty.	Description
15	3554507	2	Bearing, Tapered Roller Cup
16	3554510	2	Bearing, Tapered, Sealed
17	5133061	2	Cap, Dust Seal
	3610082	2	Seal
	5412073	2	O-Ring
18	5211827	2	Ring, Stop
19	3610068	2	Seal, Oil
20	5131504	2	Cap, Oil Seal
21	3585715	2	Bushing, Upper
22	5433878	2	Reflector
23	5433864	1	Base, Reflector, LH
	5433748	1	Base, Reflector, RH
24	2201892	1	Kit - Slider Unit, LH (Incl. 18-21)
25	2201893	1	Kit - Slider Unit, RH (Incl. 18-21)
26	1500168	4	Screw
27	5433581	1	Cap, PVC
28	3610069	2	Washer, Oil Seal
29	1500169	2	Screw
30	5521585	2	Spacer, Preload

MIRRORS and FRONT FENDER

STANDARD CRUISER V01CB15CC and STANDARD CRUISER V01CB15CG and STANDARD CRUISER V01CB15CJ and STANDARD CRUISER V01CB15DA and STANDARD CRUISER V01CB15DC and STANDARD CRUISER V01CB15DG and STANDARD CRUISER V01CB15DJ and STANDARD CRUISER V01CB15LC and STANDARD CRUISER V01CB15LG and STANDARD CRUISER V01CB15LJ and STANDARD CRUISER V01CB15UC and STANDARD CRUISER V01CB15UG and STANDARD CRUISER V01CB15UJ



Part numbers may have changed since this microfiche was issued. To ensure that correct parts are received, refer to the Electronic Catalog, which is updated monthly.

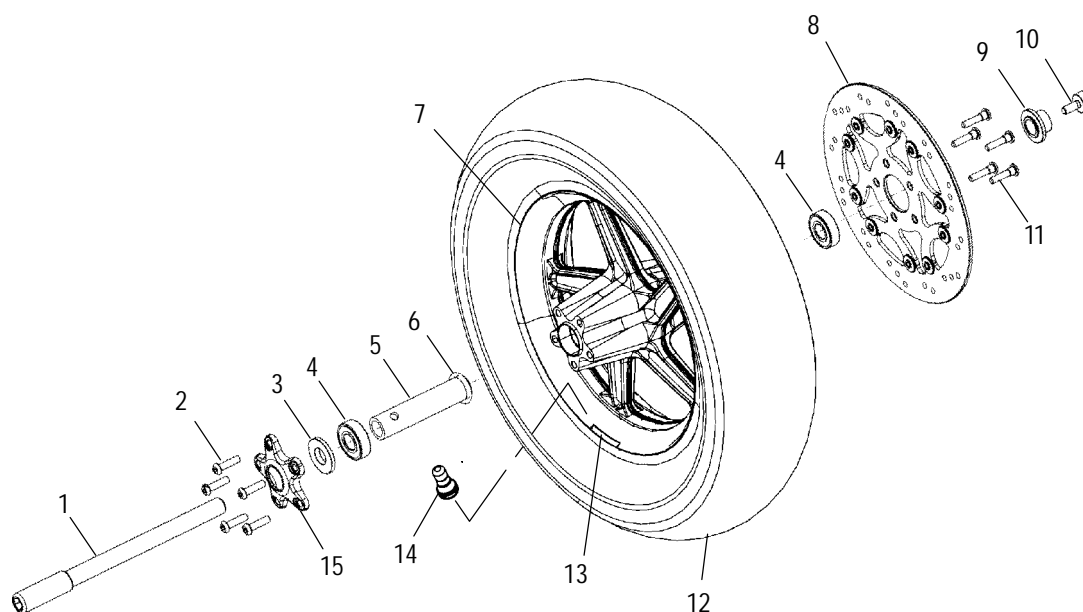
Ref.	Part No.	Qty.	Description
1	2670193	1	Mirror, LH
2	2670186	1	Mirror, RH
3	5241833A6	1	Fender, Front, Steel Gray
	5241833A9	1	Fender, Front, Navy Blue/Cashmere
	5241833-266	1	Fender, Front, Cruiser Black
	5241833-365	1	Fender, Front, Andares Red

Ref.	Part No.	Qty.	Description
4	7517510	8	Screw
5	5010440	8	Bushing, Fender Mount
6	5411355	8	Bushing, Rubber

8/00

FRONT WHEEL

STANDARD CRUISER V01CB15CC and STANDARD CRUISER V01CB15CG and STANDARD CRUISER V01CB15CJ and STANDARD CRUISER V01CB15DA and STANDARD CRUISER V01CB15DC and STANDARD CRUISER V01CB15DG and STANDARD CRUISER V01CB15DJ and STANDARD CRUISER V01CB15LC and STANDARD CRUISER V01CB15LG and STANDARD CRUISER V01CB15LJ and STANDARD CRUISER V01CB15UC and STANDARD CRUISER V01CB15UG and STANDARD CRUISER V01CB15UJ



Part numbers may have changed since this microfiche was issued. To ensure that correct parts are received, refer to the Electronic Catalog, which is updated monthly.

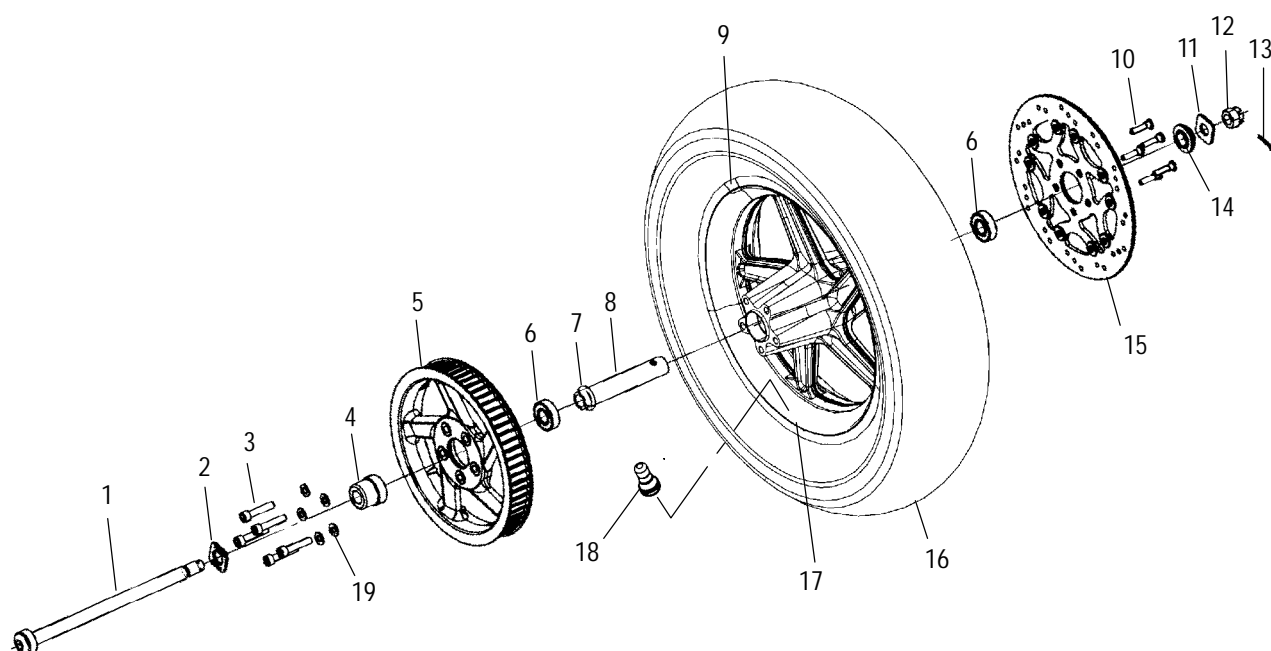
Ref.	Part No.	Qty.	Description
1	5132074	1	Axle, Front
2	7517502	5	Screw
3	5333768	1	Spacer, Bearing, Front Wheel
4	3513509	2	Bearing, Ball
5	5132323	1	Spacer, Bearing
6	5411820	1	O-Ring
7	5132634	1	Wheel, Front
8	1910435	1	Rotor, Brake, Front

Ref.	Part No.	Qty.	Description
9	5333558	1	Spacer, Front Axle
10	7517381	1	Screw
11	7517470	5	Screw
12	5411253	1	Tire, Front (16x3)
13	1520253	AR	Weight, Balance
14	1520232	1	Valve, Rim
15	5244910	1	Cap, Hub

6/00

REAR WHEEL

STANDARD CRUISER V01CB15CC and STANDARD CRUISER V01CB15CG and STANDARD CRUISER V01CB15CJ and STANDARD CRUISER V01CB15DA and STANDARD CRUISER V01CB15DC and STANDARD CRUISER V01CB15DG and STANDARD CRUISER V01CB15DJ and STANDARD CRUISER V01CB15LC and STANDARD CRUISER V01CB15LG and STANDARD CRUISER V01CB15LJ and STANDARD CRUISER V01CB15UC and STANDARD CRUISER V01CB15UG and STANDARD CRUISER V01CB15UJ



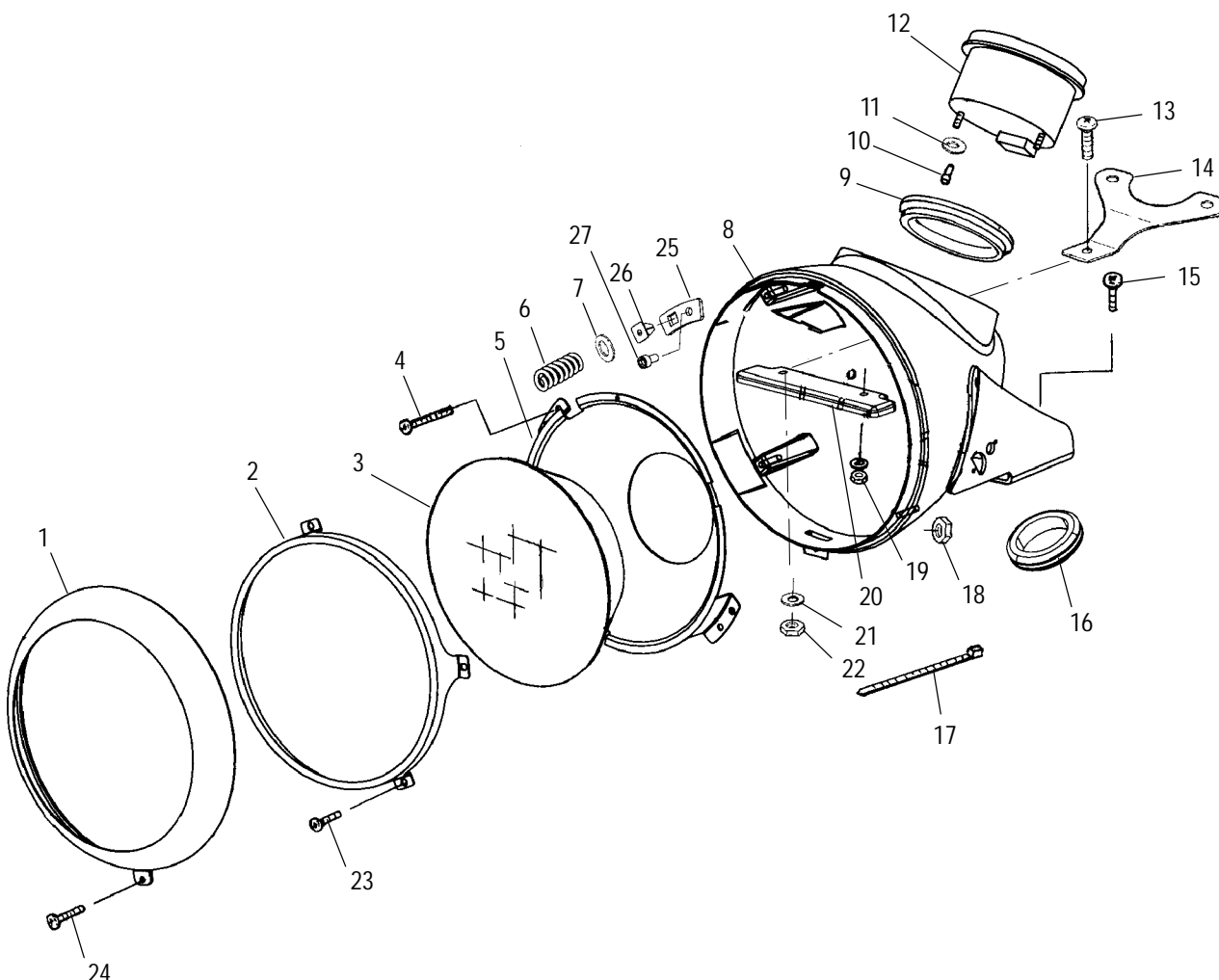
Part numbers may have changed since this microfiche was issued. To ensure that correct parts are received, refer to the Electronic Catalog, which is updated monthly.

Ref.	Part No.	Qty.	Description
1	5132275	1	Axle, Rear
2	5245088	1	Washer, Indicator, RH
3	7517727	5	Screw
4	5132624	1	Spacer, Rear Wheel, RH
5	1341334	1	Sprocket, Driven, 64T
6	3513509	2	Bearing, Ball
7	5411820	1	O-Ring
8	5132314	1	Spacer, Bearing, Middle
9	1520253	AR	Weight, Balance
10	7517470	5	Screw

Ref.	Part No.	Qty.	Description
11	5245087	1	Washer, Indicator, LH
12	7547009	1	Nut
13	7663003	1	Pin, Cotter
14	5010429	1	Spacer, Axle, Rear, LH
15	1910498	1	Rotor, Brake
16	5411970	1	Tire, Rear (16x3.5)
17	5132635	1	Wheel, Rear
18	1520232	1	Valve, Rim
19	7556123	5	Washer, Flat

HEADLIGHT

STANDARD CRUISER V01CB15CC and STANDARD CRUISER V01CB15CG and STANDARD CRUISER V01CB15CJ and STANDARD CRUISER V01CB15DA and STANDARD CRUISER V01CB15DC and STANDARD CRUISER V01CB15DG and STANDARD CRUISER V01CB15DJ and STANDARD CRUISER V01CB15LC and STANDARD CRUISER V01CB15LG and STANDARD CRUISER V01CB15LJ and STANDARD CRUISER V01CB15UC and STANDARD CRUISER V01CB15UG and STANDARD CRUISER V01CB15UJ



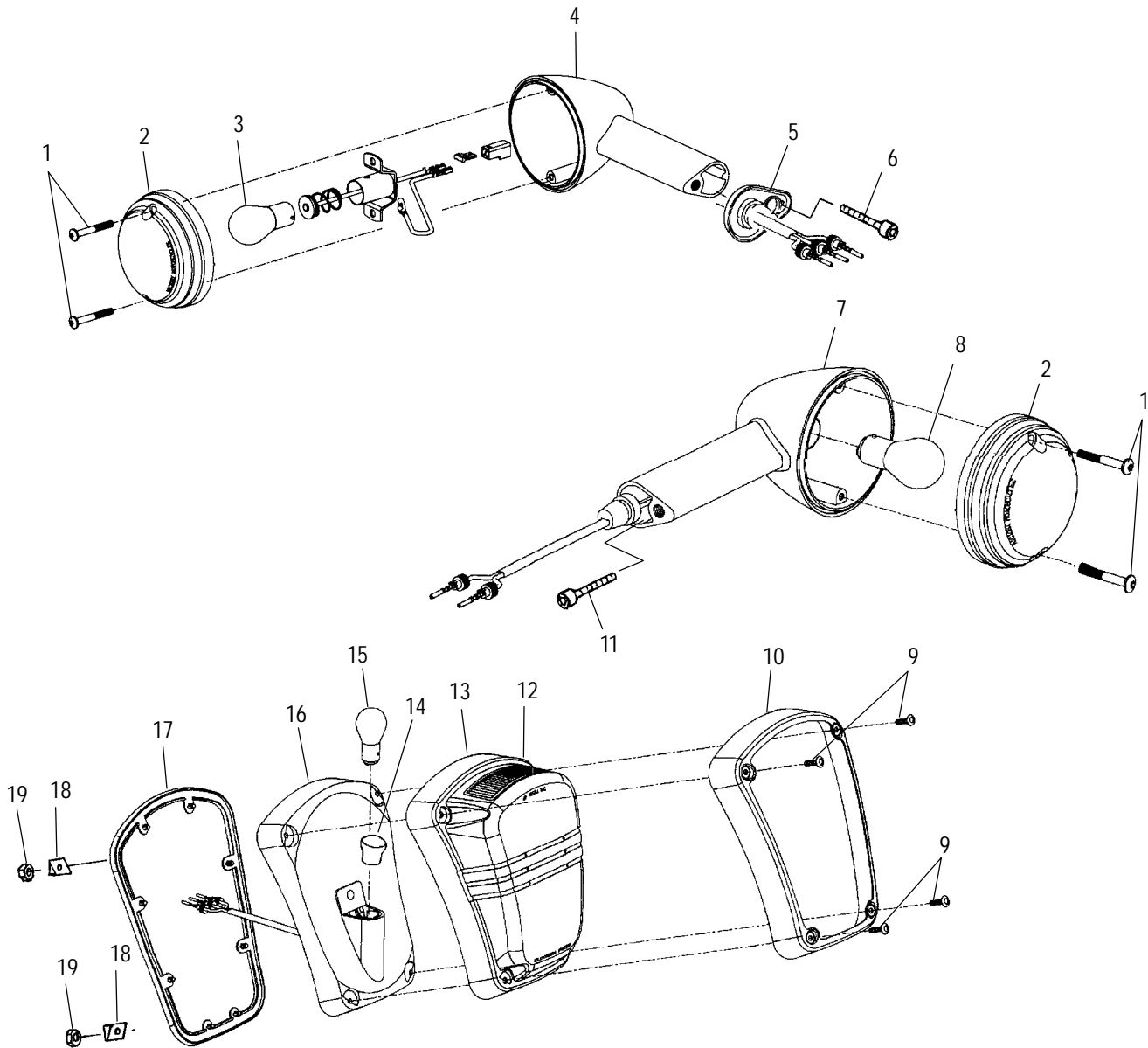
Part numbers may have changed since this microfiche was issued. To ensure that correct parts are received, refer to the Electronic Catalog, which is updated monthly.

Ref.	Part No.	Qty.	Description
1	1080019	1	Bezel, Headlamp
2	5241850	1	Ring, Headlamp Retaining
3	4010160	1	Headlight, Sealed Beam
4	7517725	3	Screw
5	5244699	1	Mount, Housing, Inner
6	7041871	3	Spring, Adjuster
7	7556093	3	Washer
8	1013103	1	Kit - Headlight Housing (Incl. 18)
9	5812024	1	Gasket, Speedometer
10	2410195	6	Lamp, Indicator
11	7556064	4	Washer, Flat
12	3280333	1	Asm., Gauge, Speedo/Tach
	3280351	1	Asm., Gauge, Speedo/Tach (Can.)
13	7517504	1	Screw

Ref.	Part No.	Qty.	Description
14	5243286	1	Bracket, Stiffener
15	7517523	4	Screw
16	5411350	1	Grommet
17	7080138	2	Cable Tie
18	7547126	1	Nut, Nylok
19	7546704	2	Nut, Nylok
20	5211872-067	1	Retainer, Speedometer
21	7556120	1	Bushing
22	7547079	1	Nut, FLEXLOC
23	7517681	3	Screw
24	7517368	1	Screw
25	5244616	3	Offset
26	5433824	3	Grommet
27	7517623	3	Screw

TAILLIGHT and TURN SIGNAL

STANDARD CRUISER V01CB15CC and STANDARD CRUISER V01CB15CG and STANDARD CRUISER V01CB15CJ and STANDARD CRUISER V01CB15DA and STANDARD CRUISER V01CB15DC and STANDARD CRUISER V01CB15DG and STANDARD CRUISER V01CB15DJ and STANDARD CRUISER V01CB15LC and STANDARD CRUISER V01CB15LG and STANDARD CRUISER V01CB15LJ and STANDARD CRUISER V01CB15UC and STANDARD CRUISER V01CB15UG and STANDARD CRUISER V01CB15UJ



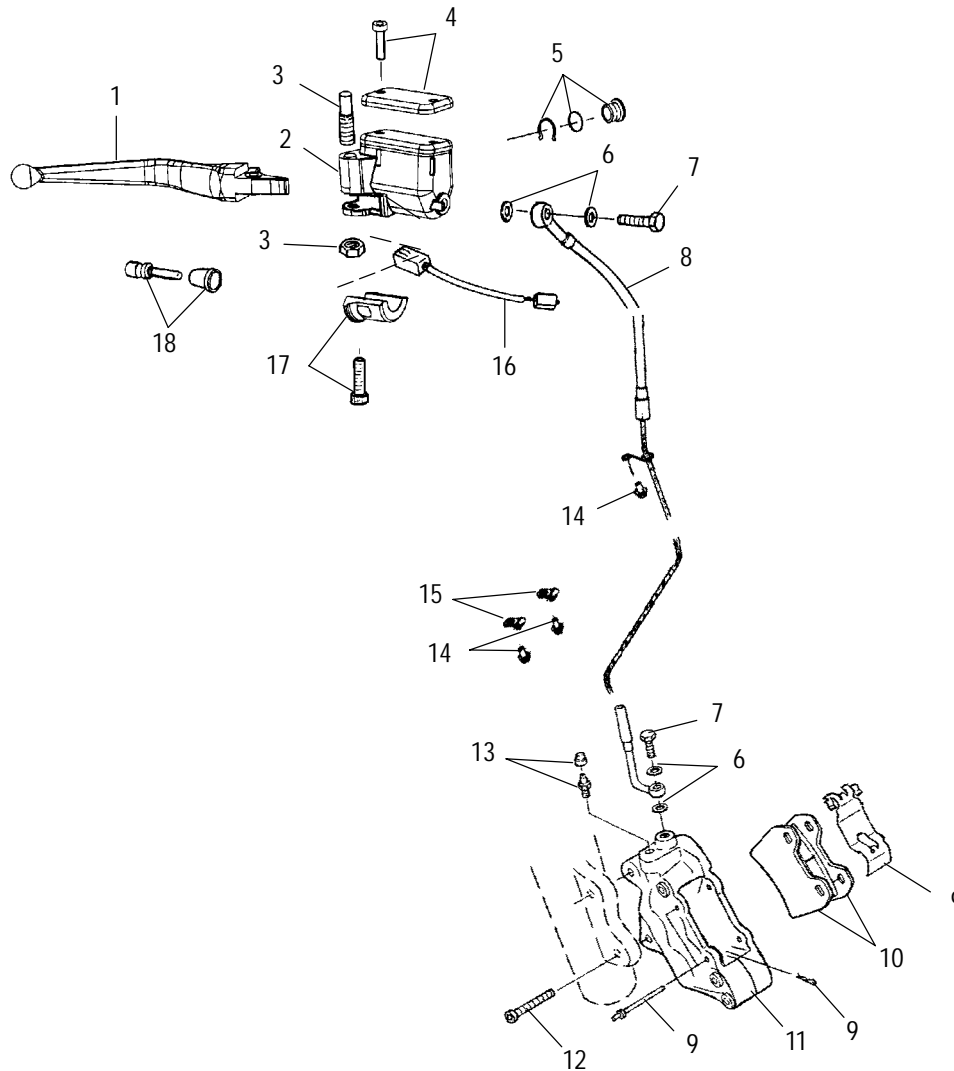
Part numbers may have changed since this microfiche was issued. To ensure that correct parts are received, refer to the Electronic Catalog, which is updated monthly.

Ref.	Part No.	Qty.	Description	Ref.	Part No.	Qty.	Description
1	7517369	8	Screw	10	5230125	1	Bezel, Taillight
2	2201419	4	Kit - Turn Signal Lens (Incl. 1)	11	7517839	2	Screw
3	4030064	2	Bulb, Dual Filament, 198	12	2410193	1	Asm., Taillight (Incl. 3,9,10,13,14,16,17)
4	2433005	1	Asm., Turn Signal, Front, Left	13	5432732	1	Lens, Taillight
	2433007	1	Asm., Turn Signal, Front, Right	14	5433773	1	Turtleneck, Taillight
5	5433203	2	Spacer, Turn Signal	15	4010222	1	Bulb, Dual Filament, 2357
6	7517838	2	Screw	16	-----	1	Base
7	2410218	1	Asm., Turn Signal, Rear, Left	17	5812256	1	Pad, Taillight Mounting
	2410217	1	Asm., Turn Signal, Rear, Right	18	5131842	2	Spacer, Taillamp, Fender
8	4030065	2	Bulb, Single Filament, 199	19	7547120	2	Nut
9	7517237	4	Screw				

8/00

FRONT BRAKE

STANDARD CRUISER V01CB15CC and STANDARD CRUISER V01CB15CG and STANDARD CRUISER V01CB15CJ and STANDARD CRUISER V01CB15DA and STANDARD CRUISER V01CB15DC and STANDARD CRUISER V01CB15DG and STANDARD CRUISER V01CB15DJ and STANDARD CRUISER V01CB15LC and STANDARD CRUISER V01CB15LG and STANDARD CRUISER V01CB15LJ and STANDARD CRUISER V01CB15UC and STANDARD CRUISER V01CB15UG and STANDARD CRUISER V01CB15UJ

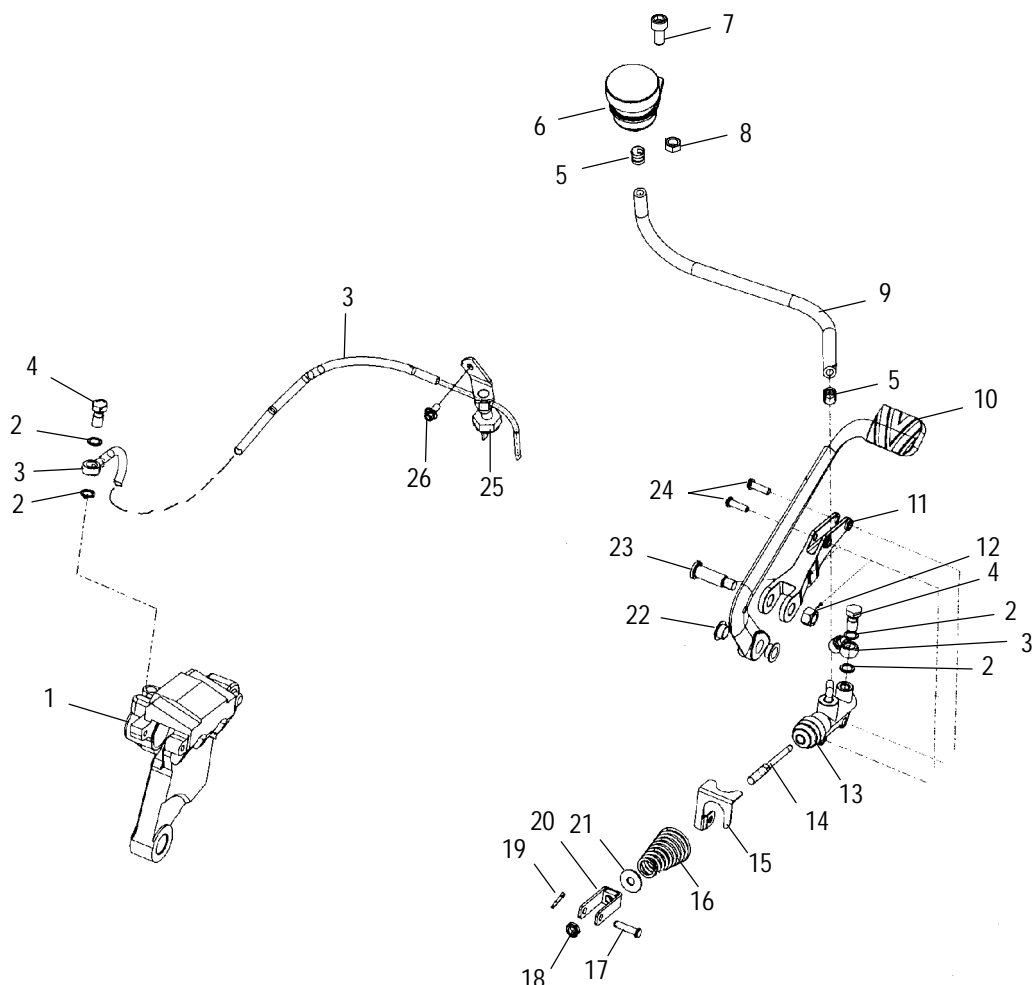


Part numbers may have changed since this microfiche was issued. To ensure that correct parts are received, refer to the Electronic Catalog, which is updated monthly.

Ref.	Part No.	Qty.	Description	Ref.	Part No.	Qty.	Description
1	5131657	1	Lever, Hand Brake, Front	10	2201170	1	Kit - Front Brake Pads (2 Per)
2	2050079	1	Asm., Master Cylinder, Front Brake	11	1930841	1	Asm., Front Brake Caliper
3	2201215	1	Kit - Lever Hardware (Incl. Pin and Nut)	12	7517419	2	Screw
4	2201216	1	Kit - Cap Hardware (Incl. Membrane, Screws, Cap and Diaphragm)	13	2201173	1	Kit - Bleeder (Incl. Bleeder Fitting and Boot)
5	2201182	1	Kit - Sight Hardware (Incl. O-Ring, Sight and Clip)	14	7517704	3	Screw
6	7556028	4	Washer, Copper	15	7080942	2	Clamp
7	1930848	2	Bolt, Banjo	16	4110242	1	Switch, Stop
8	1910434	1	Hose, Brake, Front	17	2201217	1	Kit - Clamp Hardware (Incl. Clamp and Screws)
9	2201176	2	Kit - Pins, Clips, Spring	18	2201218	1	Kit - Pushrod Hardware (Incl. Pushrod and Boot)

REAR BRAKE

STANDARD CRUISER V01CB15CC and STANDARD CRUISER V01CB15CG and STANDARD CRUISER V01CB15CJ and STANDARD CRUISER V01CB15DA and STANDARD CRUISER V01CB15DC and STANDARD CRUISER V01CB15DG and STANDARD CRUISER V01CB15DJ and STANDARD CRUISER V01CB15LC and STANDARD CRUISER V01CB15LG and STANDARD CRUISER V01CB15LJ and STANDARD CRUISER V01CB15UC and STANDARD CRUISER V01CB15UG and STANDARD CRUISER V01CB15UJ

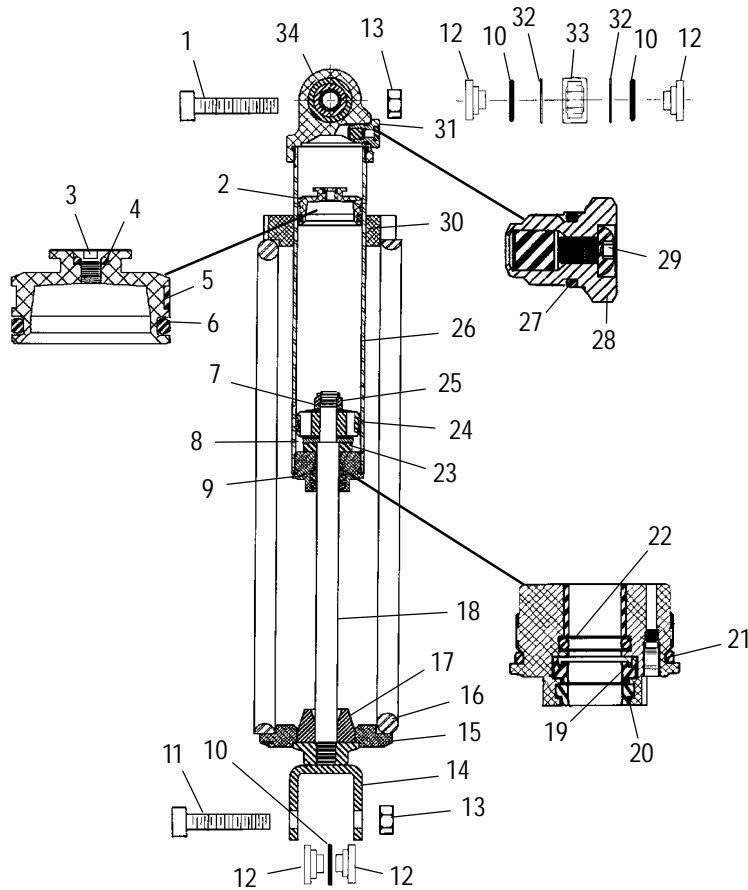


Part numbers may have changed since this microfiche was issued. To ensure that correct parts are received, refer to the Electronic Catalog, which is updated monthly.

Ref.	Part No.	Qty.	Description
	2201171	1	Kit - Brake Pad
	2201173	1	Kit - Bleeder Screw, Boot
	2201174	1	Kit - Boots, Caliper, Rear
	2201175	1	Kit - Pin, Retainer, Spring, Clip
1	1910374	1	Asm., Caliper, Rear
2	7556028	4	Washer, Copper
3	1910432	1	Hose
4	1930848	2	Bolt
5	7080829	2	Clamp, Hose
6	1930882	1	Reservoir
7	7517405	1	Screw
8	7547141	1	Nut
9	8450082	1	Hose
10	5132459	1	Pedal, Brake
11	5131688	1	Support, Brake Pedal
12	7547039	1	Nut

Ref.	Part No.	Qty.	Description
13	1910396	1	Cylinder, Master, Rear
14	5132298	1	Rod, Brake
15	5242952	1	Bracket, Brake Spring Retaining
16	7041746	1	Spring, Brake Pedal
17	7661096	1	Pin, Brake
18	7547050	1	Nut
19	7661094	1	Pin, Cotter
20	1080038	1	Clevis, Brake Rod
21	7556045	1	Washer, Flat
22	5020904	2	Bushing
23	7517715	1	Screw
24	7515391	2	Screw
25	4010372	1	Switch, Pressure
26	7517704	1	Screw

STANDARD CRUISER V01CB15CC and STANDARD CRUISER V01CB15CG and STANDARD CRUISER V01CB15CJ and STANDARD CRUISER V01CB15DA and STANDARD CRUISER V01CB15DC and STANDARD CRUISER V01CB15DG and STANDARD CRUISER V01CB15DJ and STANDARD CRUISER V01CB15LC and STANDARD CRUISER V01CB15LG and STANDARD CRUISER V01CB15LJ and STANDARD CRUISER V01CB15UC and STANDARD CRUISER V01CB15UG and STANDARD CRUISER V01CB15UJ



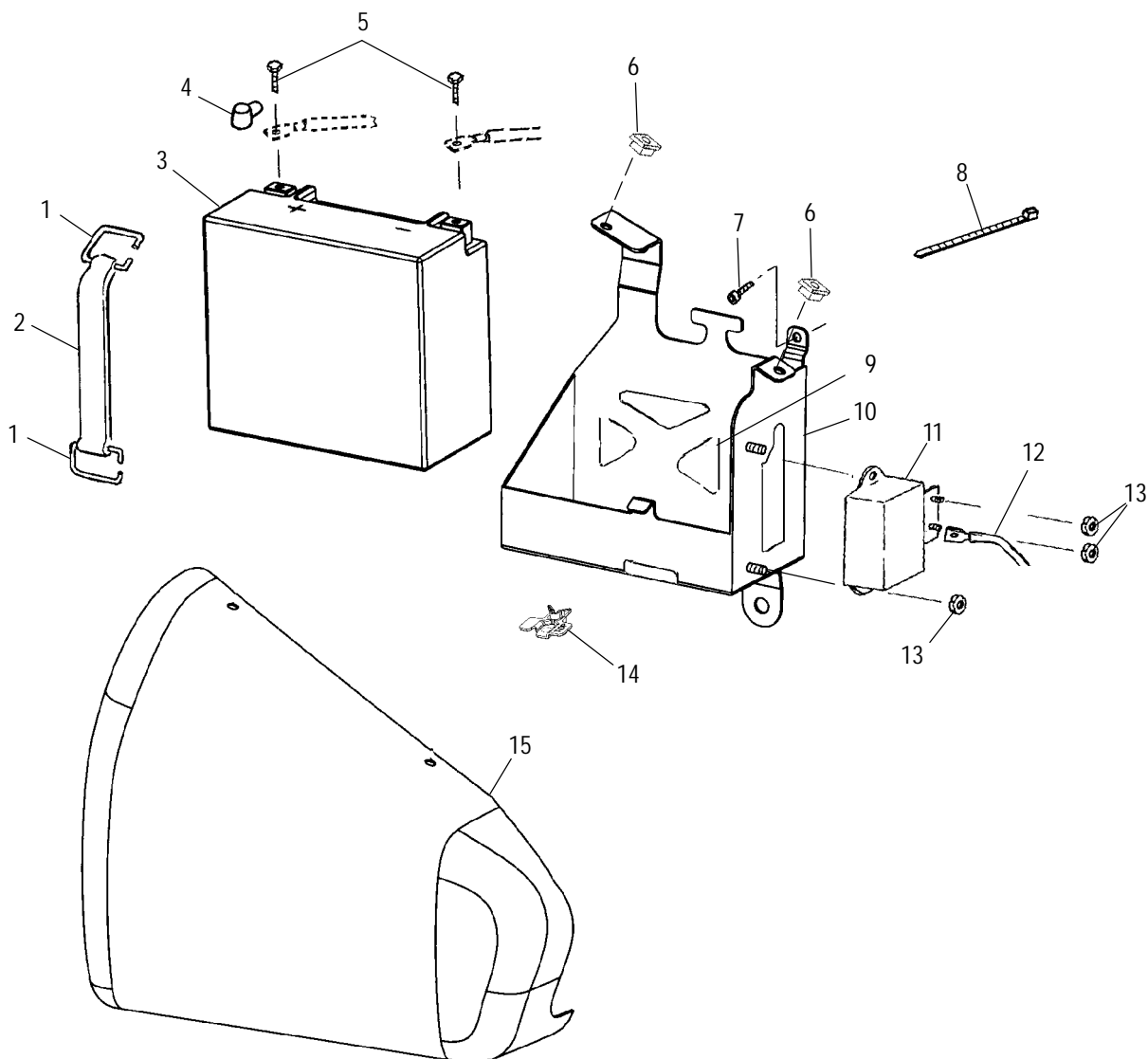
Part numbers may have changed since this microfiche was issued. To ensure that correct parts are received, refer to the Electronic Catalog, which is updated monthly.

Ref.	Part No.	Qty.	Description
	7042024	1	Shock
	1500454	1	Decal - Warning
1	7517364	1	Screw (Rear Shock Mounting)
2	1500011	1	Piston, Floating
3	1500018	1	Screw
4	1500022	1	O-Ring
5	1500006	1	Bearing, External
6	1500180	1	O-Ring
7	1500015	1	Plate, Back-Up
8	1500017	1	Plate, Top Out
9	1500186	1	Asm., Bearing
10	1500093	3	O-Ring
11	7517365	1	Screw (Front Shock Mounting)
12	1500173	4	Reducer
13	7547122	2	Nut
14	1500179	1	Eyelet
15	1500178	1	Retainer, Spring
16	7041913	1	Spring

Ref.	Part No.	Qty.	Description
17	1500066	1	Bumper, Bottom Out
18	1500177	1	Shaft
19	1500266	1	U-Cup, Shaft
20	1500268	1	Wiper, Shaft, Outer
21	1500020	1	O-Ring, Outer
22	1500021	1	O-Ring, Shaft
23	1500074	1	Bumper, Top Out
24	1500002	1	Bearing, External
25	1500016	1	Nut, Lock
26	1500181	1	Body
27	1500023	1	O-Ring
28	1500014	1	Asm., Air Valve
29	1500019	1	Screw
30	1500237	1	Ring, Preload, Spring
31	1500004	1	O-Ring
32	7710446	2	Ring, Snap
33	3513506	1	Bearing, Spherical
34	1500175	1	Asm., Body Cap

BATTERY BOX

STANDARD CRUISER V01CB15CC and STANDARD CRUISER V01CB15CG and STANDARD CRUISER V01CB15CJ and STANDARD CRUISER V01CB15DA and STANDARD CRUISER V01CB15DC and STANDARD CRUISER V01CB15DG and STANDARD CRUISER V01CB15DJ and STANDARD CRUISER V01CB15LC and STANDARD CRUISER V01CB15LG and STANDARD CRUISER V01CB15LJ and STANDARD CRUISER V01CB15UC and STANDARD CRUISER V01CB15UG and STANDARD CRUISER V01CB15UJ



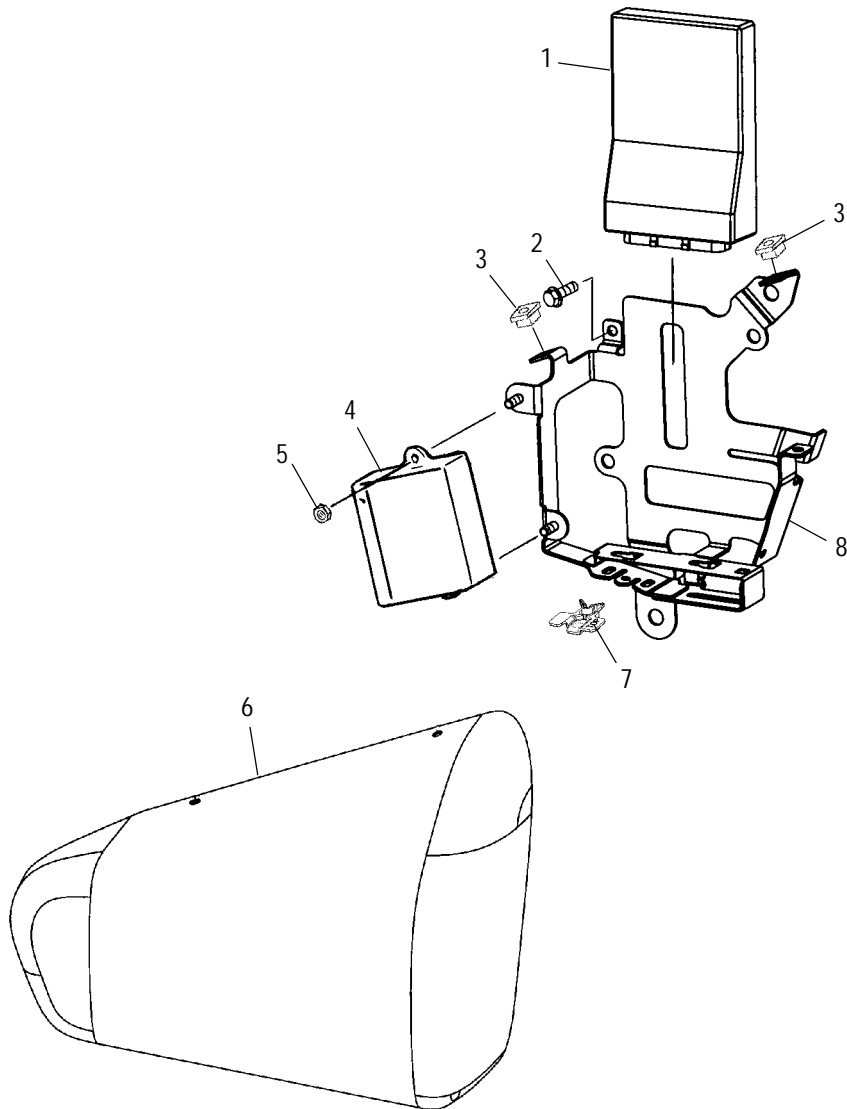
Part numbers may have changed since this microfiche was issued. To ensure that correct parts are received, refer to the Electronic Catalog, which is updated monthly.

Ref.	Part No.	Qty.	Description
1	5224472	2	D-Hook
2	5410424	1	Strap, Battery Hold Down
3	4140011	1	Battery
4	5411570	1	Boot, Cable, Battery, Red
5	2201357	1	Kit - Battery Bolt
6	5433510	2	Grommet
7	7517704	2	Screw
8	7080138	4	Cable Tie
9	5244759	8	Pad, Battery Box

Ref.	Part No.	Qty.	Description
10	1013232-067	1	Box, Battery
11	2410181	1	Relay, Starter
12	4010309	1	Cable, Starter/Relay
13	7547120	4	Nut
14	5433841	1	Clip
15	1013280-266	1	Cover, Side, Black, LH
	1013280-321	1	Cover, Side, Navy Blue, LH
	1013280-265	1	Cover, Side, Antares Red, LH

ECM BOX and TOOL KIT

STANDARD CRUISER V01CB15CC and STANDARD CRUISER V01CB15CG and STANDARD CRUISER V01CB15CJ and STANDARD CRUISER V01CB15DA and STANDARD CRUISER V01CB15DC and STANDARD CRUISER V01CB15DG and STANDARD CRUISER V01CB15DJ and STANDARD CRUISER V01CB15LC and STANDARD CRUISER V01CB15LG and STANDARD CRUISER V01CB15LJ and STANDARD CRUISER V01CB15UC and STANDARD CRUISER V01CB15UG and STANDARD CRUISER V01CB15UJ



Part numbers may have changed since this microfiche was issued. To ensure that correct parts are received, refer to the Electronic Catalog, which is updated monthly.

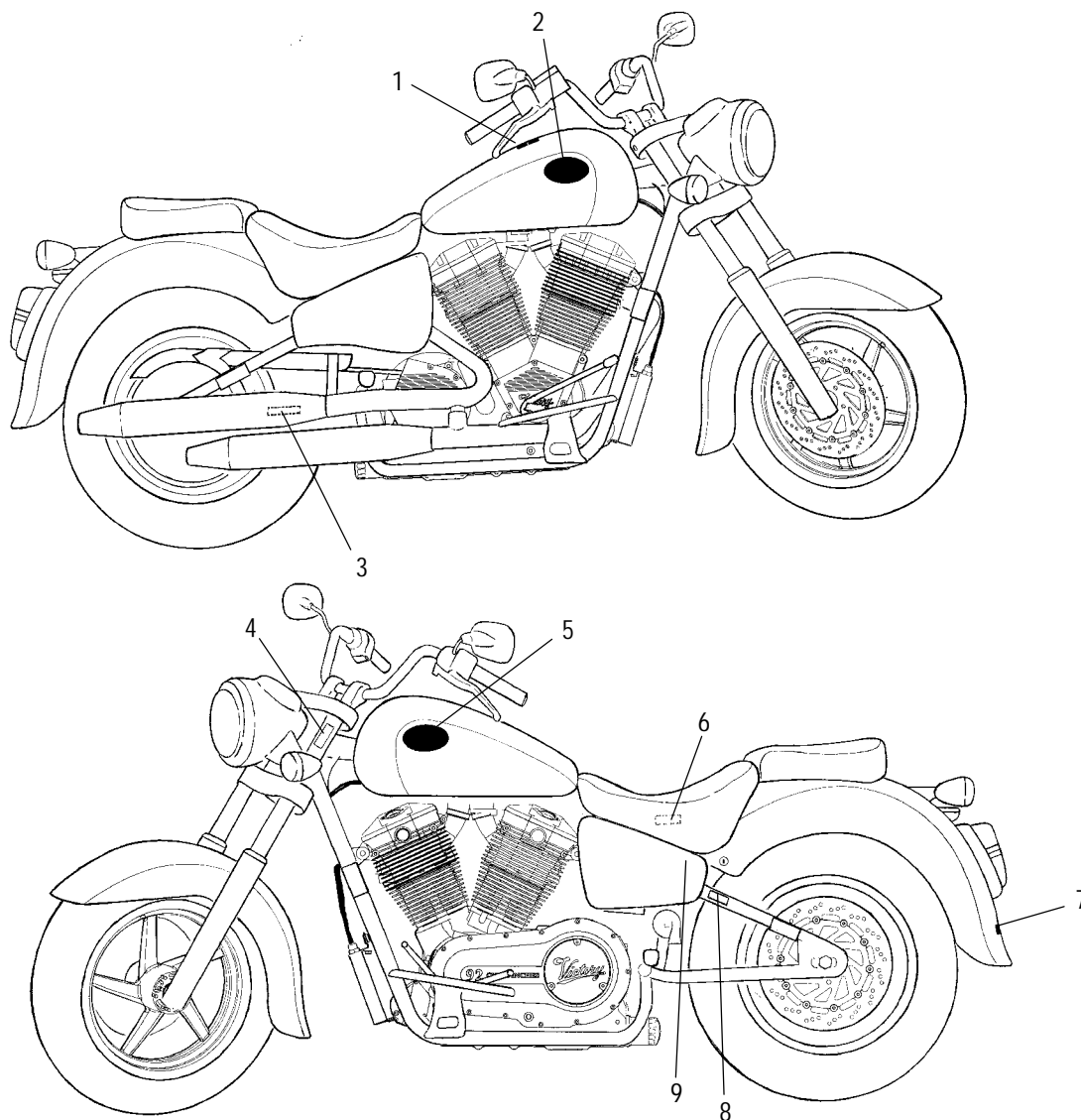
Ref.	Part No.	Qty.	Description
1	4010290	1	Module, Electrical Control
	4010454	1	Chip
2	7517705	1	Screw
3	5433510	2	Grommet
4	2410101	1	Flasher, Turn Signal/Hazard
5	7547120	2	Nut

Ref.	Part No.	Qty.	Description
6	1013281-266	1	Cover, Side, Black, RH
	1013281-321	1	Cover, Side, Navy Blue, RH
	1013281-265	1	Cover, Side, Andares Red, RH
7	5433841	1	Clip
8	1013241-067	1	Mount, ECM/Fuse/Side Cover

8/00

DECALS

STANDARD CRUISER V01CB15CC and STANDARD CRUISER V01CB15CG and STANDARD CRUISER V01CB15CJ and STANDARD CRUISER V01CB15DA and STANDARD CRUISER V01CB15DC and STANDARD CRUISER V01CB15DG and STANDARD CRUISER V01CB15DJ and STANDARD CRUISER V01CB15LC and STANDARD CRUISER V01CB15LG and STANDARD CRUISER V01CB15LJ and STANDARD CRUISER V01CB15UC and STANDARD CRUISER V01CB15UG and STANDARD CRUISER V01CB15UJ



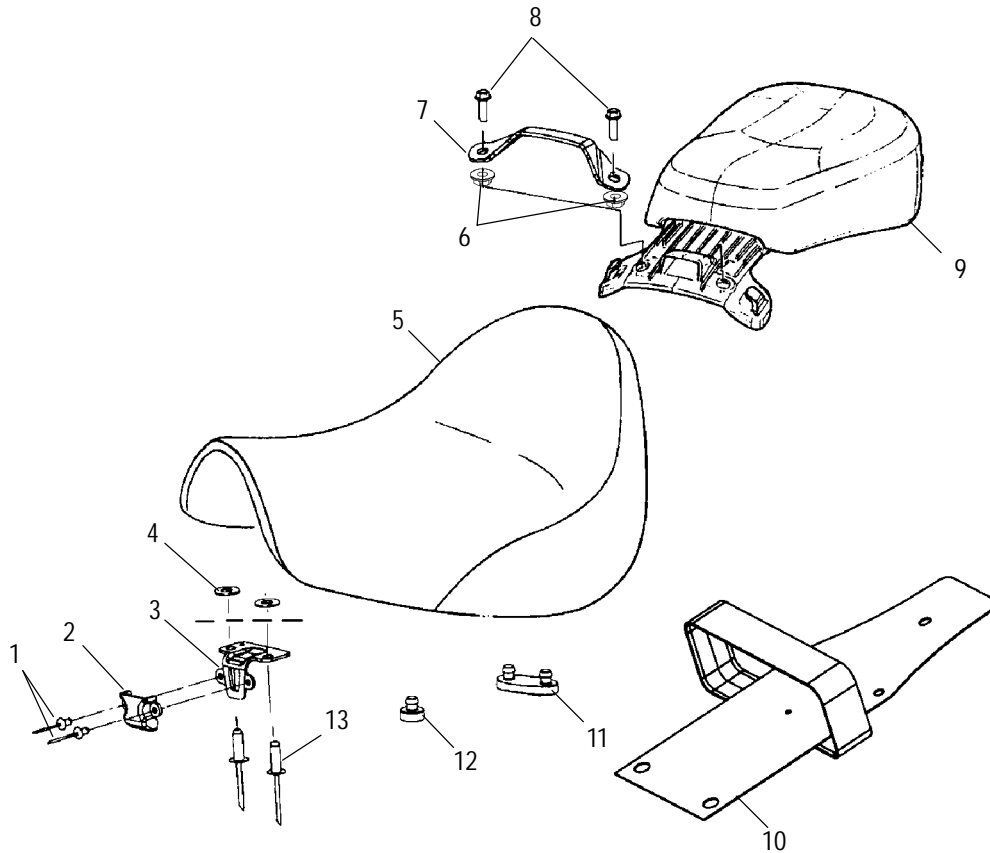
Part numbers may have changed since this microfiche was issued. To ensure that correct parts are received, refer to the Electronic Catalog, which is updated monthly.

Ref.	Part No.	Qty.	Description
1	7079199	1	Decal - Warning, Operate, Fuel
	7079205	1	Decal - Warning, Operate, Fuel (Fr.)
2	7078863	1	Badge, Tank, RH (Gold Plated)
	7078869	1	Badge, Tank, RH (Nickel Plated)
3	7079303	1	Decal - Tire Information (Lower Swing Arm Tube)
	7079304	1	Decal - Tire Information (Lower Swing Arm Tube)(Fr.)
4	7079224	1	Decal - Vehicle Identification Number
	7079225	1	Decal - Vehicle Identification Number (Fr.)
5	7078862	1	Badge, Tank, LH (Gold Plated)
	7078868	1	Badge, Tank, LH (Nickel Plated)

Ref.	Part No.	Qty.	Description
6	7078697	1	Decal - Victory Patents Pending
7	7078543	1	Decal - USA/Flag, Silver
	7078893	1	Decal - USA/Flag, White
8	7079433	1	Decal - VECI/Noise (DC)(DD)(DE)
	7079434	1	Decal - VECI/Noise (LC)(LD)(LE)
	7079435	1	Decal - VECI/Noise (Fr.)
9	7078959	1	Decal - Fuse Box (Inside Box Cover)
	7078960	1	Decal - Fuse Box (Inside Box Cover)(Fr.)

SEAT

STANDARD CRUISER V01CB15CC and STANDARD CRUISER V01CB15CG and STANDARD CRUISER V01CB15CJ and STANDARD CRUISER V01CB15DA and STANDARD CRUISER V01CB15DC and STANDARD CRUISER V01CB15DG and STANDARD CRUISER V01CB15DJ and STANDARD CRUISER V01CB15LC and STANDARD CRUISER V01CB15LG and STANDARD CRUISER V01CB15LJ and STANDARD CRUISER V01CB15UC and STANDARD CRUISER V01CB15UG and STANDARD CRUISER V01CB15UJ



Part numbers may have changed since this microfiche was issued. To ensure that correct parts are received, refer to the Electronic Catalog, which is updated monthly.

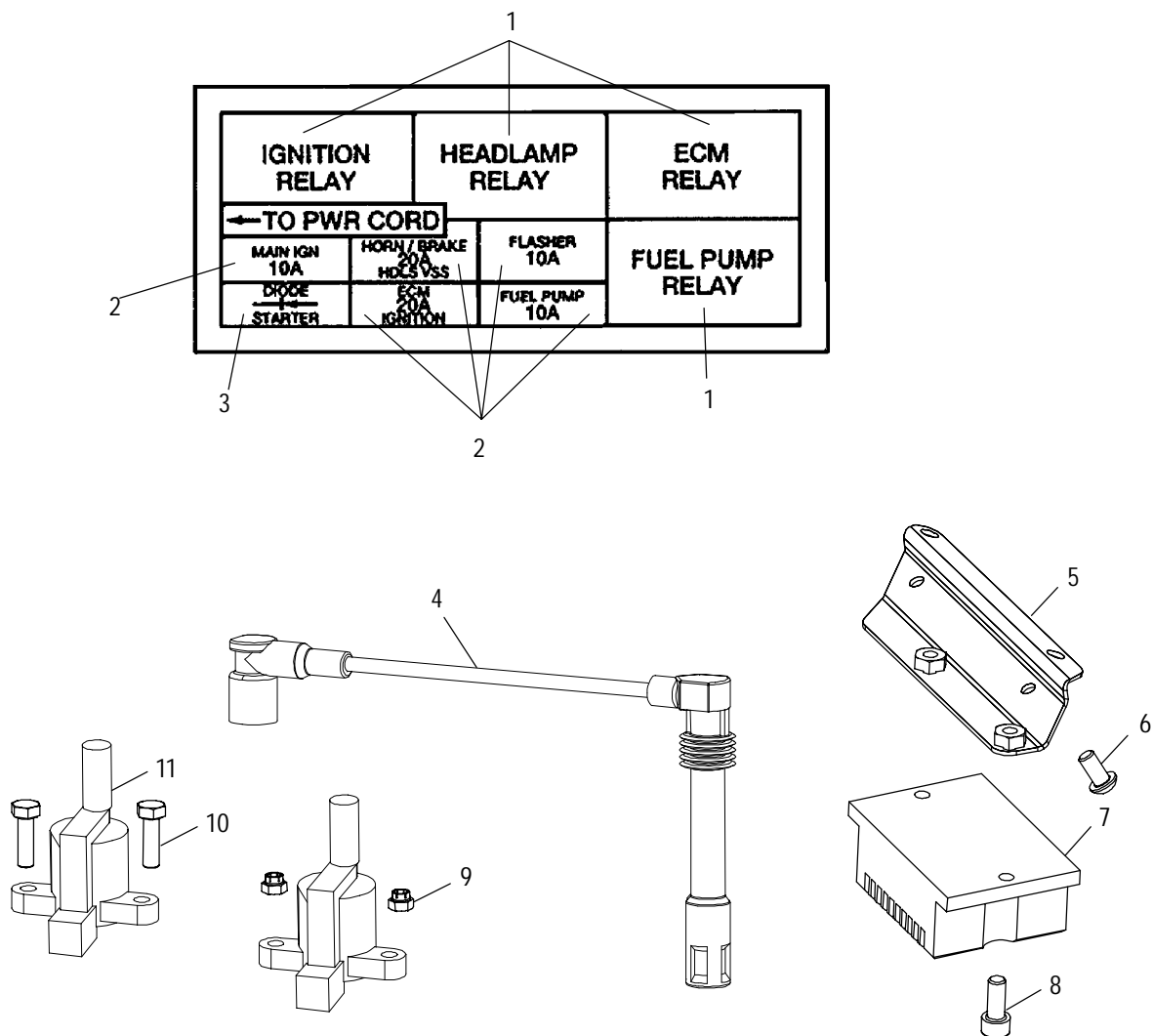
Ref.	Part No.	Qty.	Description
1	7661092	2	Rivet
2	5433698	1	Shield, Seat Bracket
3	5243971	1	Bracket, Seat Lock
4	7556133	2	Washer, Flat
5	2682532	1	Seat
6	7556146	2	Washer, Shoulder
7	5244488	1	Guard, Seat Base, Rear

Ref.	Part No.	Qty.	Description
8	7517751	2	Screw
9	2682529	1	Asm., Tandem Seat
10	2682455	1	Asm., Seat Strap
11	5411922	2	Pad, Rubber, Seat
12	5410414	2	Bumper, Rubber
13	7661081	2	Rivet

6/00

ELECTRICAL

STANDARD CRUISER V01CB15CC and STANDARD CRUISER V01CB15CG and STANDARD CRUISER V01CB15CJ and STANDARD CRUISER V01CB15DA and STANDARD CRUISER V01CB15DC and STANDARD CRUISER V01CB15DG and STANDARD CRUISER V01CB15DJ and STANDARD CRUISER V01CB15LC and STANDARD CRUISER V01CB15LG and STANDARD CRUISER V01CB15LJ and STANDARD CRUISER V01CB15UC and STANDARD CRUISER V01CB15UG and STANDARD CRUISER V01CB15UJ



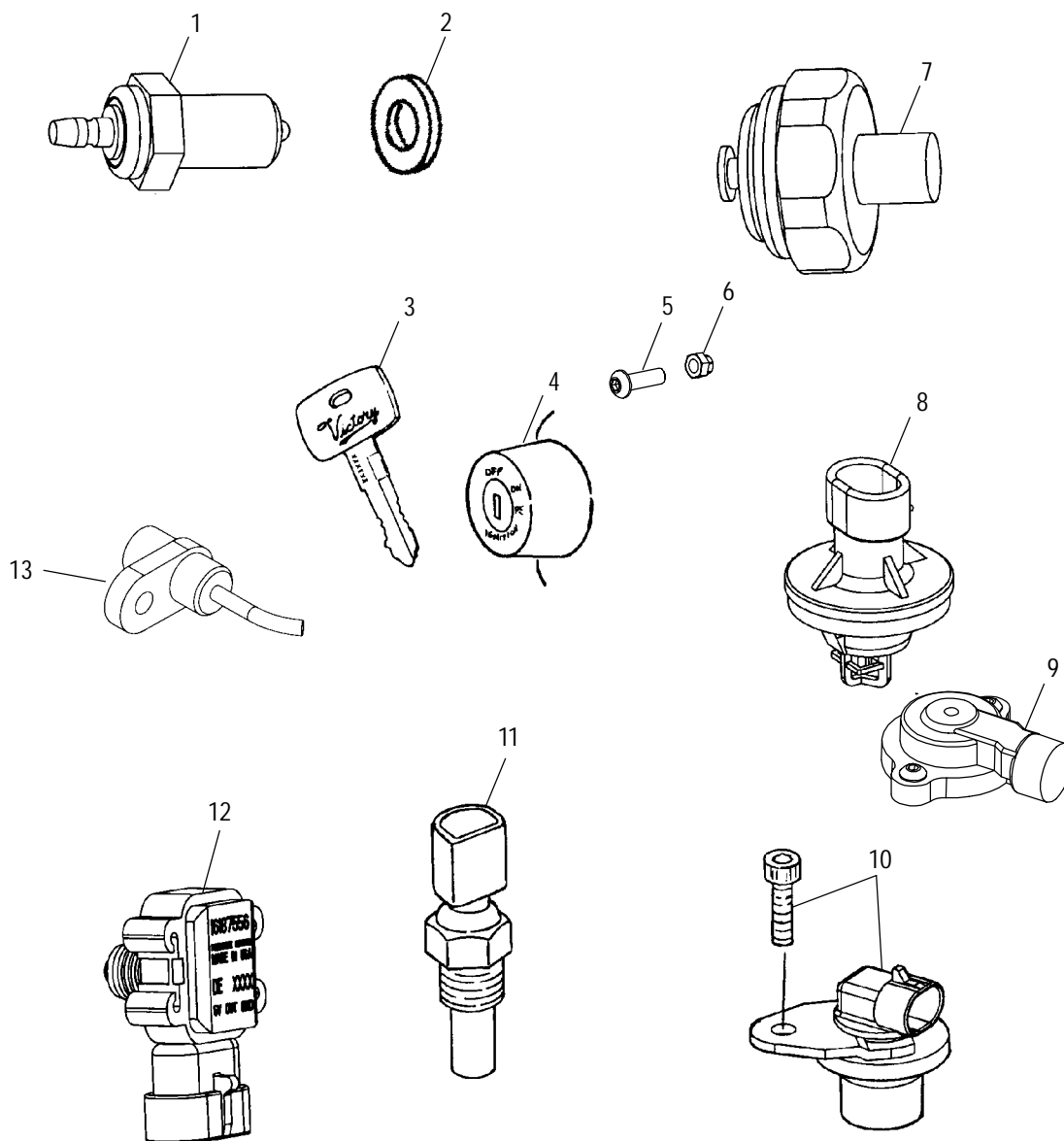
Part numbers may have changed since this microfiche was issued. To ensure that correct parts are received, refer to the Electronic Catalog, which is updated monthly.

Ref.	Part No.	Qty.	Description	Ref.	Part No.	Qty.	Description
	7078959	1	Decal - Fuse Box	3	2434019	1	Diode, Starter Circuit
	2460692	1	Harness, Turn Signal, Rear, Right	4	4010130	2	Lead, Spark Plug Wire
	2460695	1	Harness, Turn Signal, Rear, Left	5	1080003-067	1	Bracket, Voltage Regulator
	4010153	1	Connector, Fender	6	7517739	2	Screw
	4010154	1	Lock, Connector	7	2410209	1	Regulator, Voltage
	2460859	1	Harness, Wire	8	7517272	2	Screw
	2460811	1	Harness, Injector	9	7547120	2	Nut
1	2410098	4	Relay, Fuel Pump	10	7517429	2	Screw
2	2434016	4	Fuse, Ignition, 10 Amp.	11	4010136	2	Coil, Ignition
	2434017	1	Fuse, Park, 20 Amp.				

6/00

ELECTRICAL

STANDARD CRUISER V01CB15CC and STANDARD CRUISER V01CB15CG and STANDARD CRUISER V01CB15CJ and STANDARD CRUISER V01CB15DA and STANDARD CRUISER V01CB15DC and STANDARD CRUISER V01CB15DG and STANDARD CRUISER V01CB15DJ and STANDARD CRUISER V01CB15LC and STANDARD CRUISER V01CB15LG and STANDARD CRUISER V01CB15LJ and STANDARD CRUISER V01CB15UC and STANDARD CRUISER V01CB15UG and STANDARD CRUISER V01CB15UJ



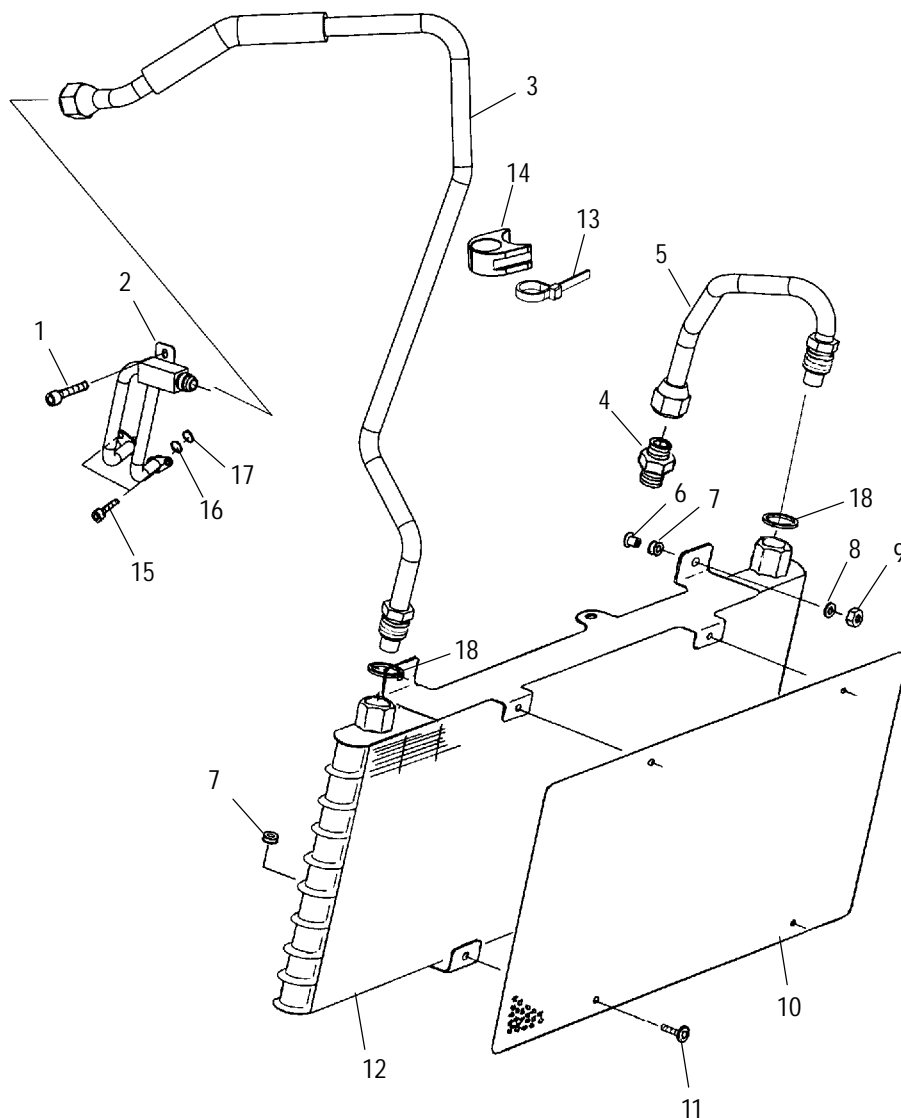
Part numbers may have changed since this microfiche was issued. To ensure that correct parts are received, refer to the Electronic Catalog, which is updated monthly.

Ref.	Part No.	Qty.	Description	Ref.	Part No.	Qty.	Description
1	4110235	1	Switch, Neutral Indicator	6	7547119	1	Nut
2	7556154	1	Washer, Flat	7	4110211	1	Sensor, Oil Pressure
3	4110239	1	Key, Ignition, Blank	8	4040077	1	Sensor, Air Temperature
4	4110253	1	Asm., Ignition Switch and Key (Incl. Seat Lock, Fork Lock, Ignition Switch, Seat Lock Latch)	9	4010225 1500201	1 1	Sensor, Throttle Position O-Ring
	4010270	1	Switch, Key, Lock	10	4110217 7517272	1 1	Sensor, Crankshaft Position Screw
	7010088	1	Lock, Seat	11	4040076	1	Sensor, Engine Temperature
	7010085	1	Lock, Fork	12	4040078	1	Sensor, MAP
	7080856	1	Latch, Seat Lock	13	4010361	1	Sensor, Vehicle Speed
5	7517516	1	Screw				

6/00

OIL COOLING

STANDARD CRUISER V01CB15CC and STANDARD CRUISER V01CB15CG and STANDARD CRUISER V01CB15CJ and STANDARD CRUISER V01CB15DA and STANDARD CRUISER V01CB15DC and STANDARD CRUISER V01CB15DG and STANDARD CRUISER V01CB15DJ and STANDARD CRUISER V01CB15LC and STANDARD CRUISER V01CB15LG and STANDARD CRUISER V01CB15LJ and STANDARD CRUISER V01CB15UC and STANDARD CRUISER V01CB15UG and STANDARD CRUISER V01CB15UJ



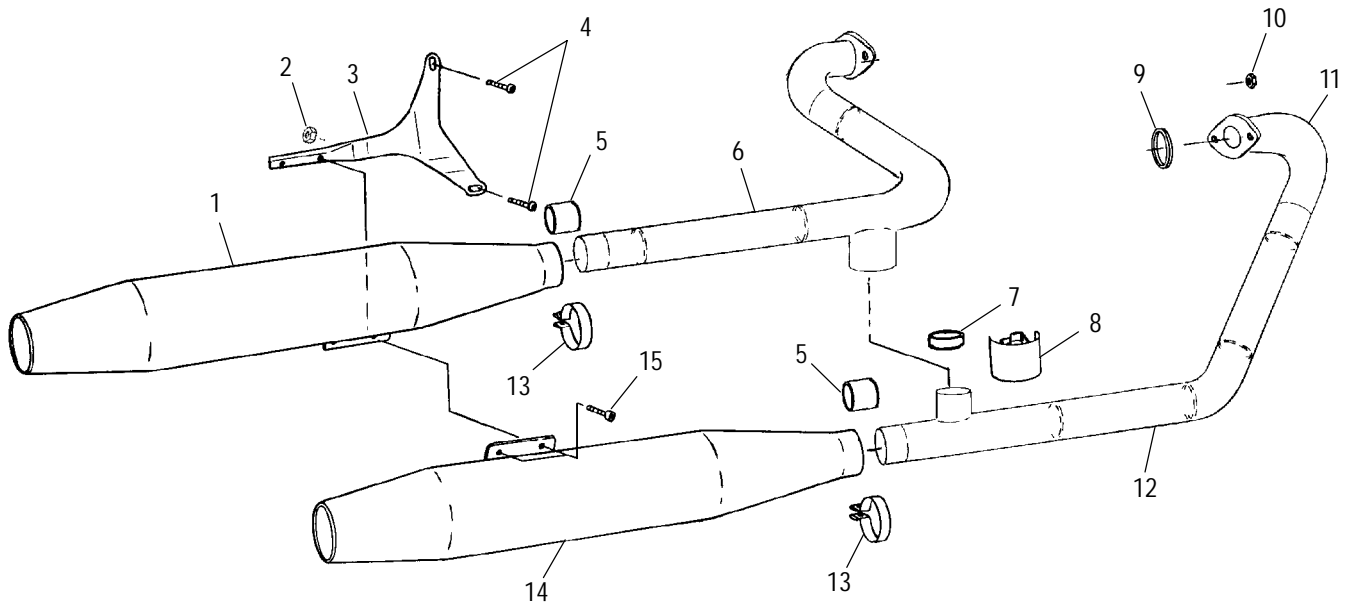
Part numbers may have changed since this microfiche was issued. To ensure that correct parts are received, refer to the Electronic Catalog, which is updated monthly.

Ref.	Part No.	Qty.	Description	Ref.	Part No.	Qty.	Description
1	7517370	1	Screw	10	5243033	1	Guard, Oil Cooler
2	2540043	1	Manifold, Oil Cooling	11	7517573	4	Screw
3	5333908	1	Tube, Formed, Oil Inlet	12	1240070	1	Cooler, Oil
4	7052186	1	Fitting, Engine Oil Line	13	7080906	1	Cable Tie
5	5333909	1	Tube, Formed, Oil Outlet	14	5412006	1	Mount, Rubber
6	5010474	2	Sleeve, Cooler Mount	15	7517405	2	Screw
7	5411579	4	Grommet	16	7556113	2	Washer, Flat
8	7556064	2	Washer, Flat	17	5411356	2	O-Ring
9	7547120	2	Nut	18	5412027	2	O-Ring

6/00

EXHAUST SYSTEM

STANDARD CRUISER V01CB15CC and STANDARD CRUISER V01CB15CG and STANDARD CRUISER V01CB15CJ and STANDARD CRUISER V01CB15DA and STANDARD CRUISER V01CB15DC and STANDARD CRUISER V01CB15DG and STANDARD CRUISER V01CB15DJ and STANDARD CRUISER V01CB15LC and STANDARD CRUISER V01CB15LG and STANDARD CRUISER V01CB15LJ and STANDARD CRUISER V01CB15UC and STANDARD CRUISER V01CB15UG and STANDARD CRUISER V01CB15UJ



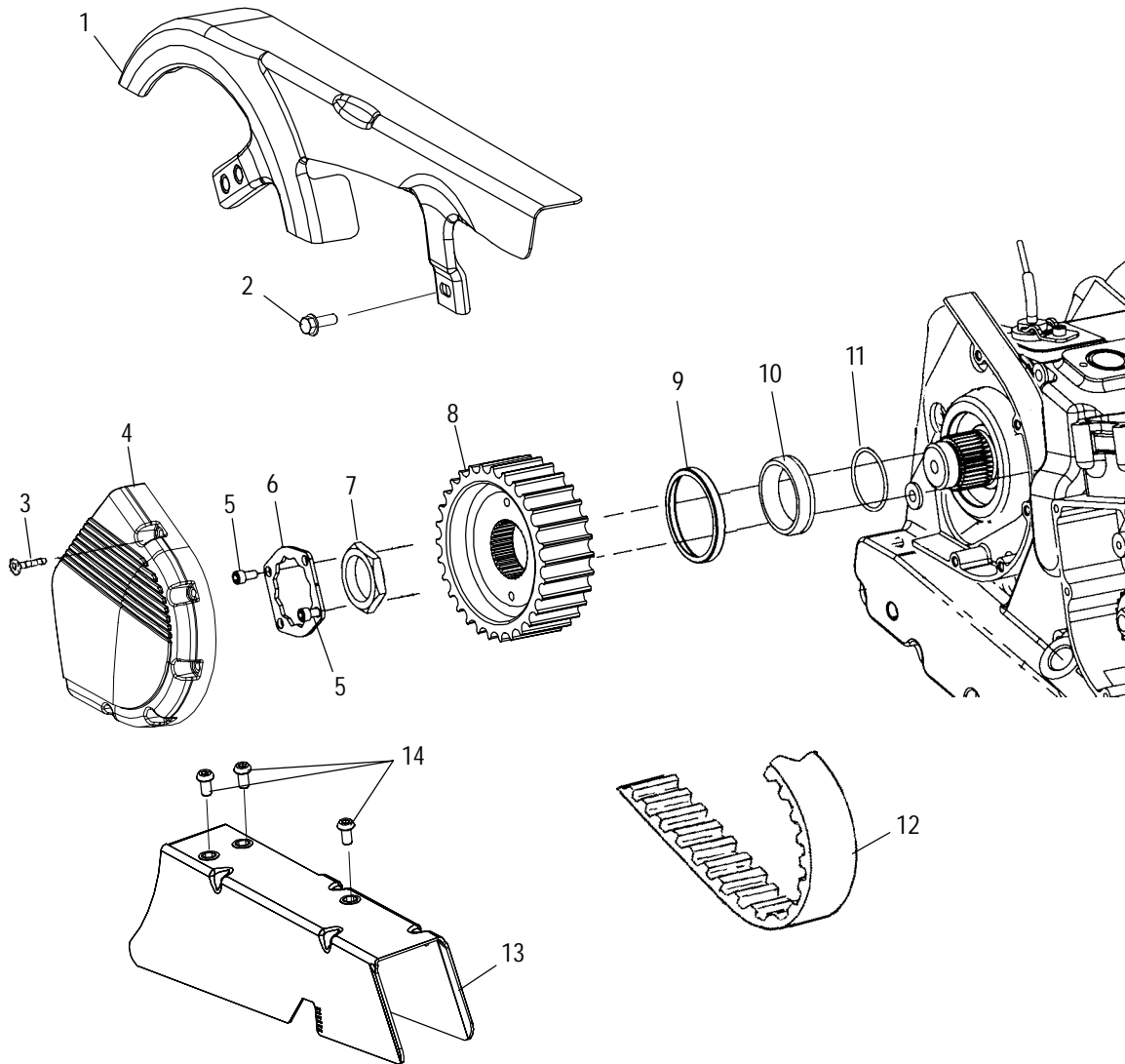
Part numbers may have changed since this microfiche was issued. To ensure that correct parts are received, refer to the Electronic Catalog, which is updated monthly.

Ref.	Part No.	Qty.	Description
1	1261032	1	Muffler, Rear (Incl. 13)
2	7547045	2	Nut, FLEXLOC
3	5243514-067	1	Bracket, Exhaust, Rear
4	7517838	2	Screw
5	5811770	2	Gasket, Exhaust, Muffler
6	1261036	1	Asm., Exhaust Pipe, Rear (Incl. Shield)
7	5811829	1	Gasket, Exhaust, Crossover
8	7080835	1	Clamp, Crossover

Ref.	Part No.	Qty.	Description
9	5211770	2	Gasket, Exhaust Sealing
10	7546805	4	Nut
11	1261017	1	Asm., Exhaust Pipe, Front (Incl. Shield)
12	7080774	7	Clamp, Heat Shield
13	7080834	2	Clamp, Muffler
14	1261033	1	Muffler, Front (Incl. 13)
15	7517524	2	Screw

FRONT DRIVE SPROCKET

STANDARD CRUISER V01CB15CC and STANDARD CRUISER V01CB15CG and STANDARD CRUISER V01CB15CJ and STANDARD CRUISER V01CB15DA and STANDARD CRUISER V01CB15DC and STANDARD CRUISER V01CB15DG and STANDARD CRUISER V01CB15DJ and STANDARD CRUISER V01CB15LC and STANDARD CRUISER V01CB15LG and STANDARD CRUISER V01CB15LJ and STANDARD CRUISER V01CB15UC and STANDARD CRUISER V01CB15UG and STANDARD CRUISER V01CB15UJ



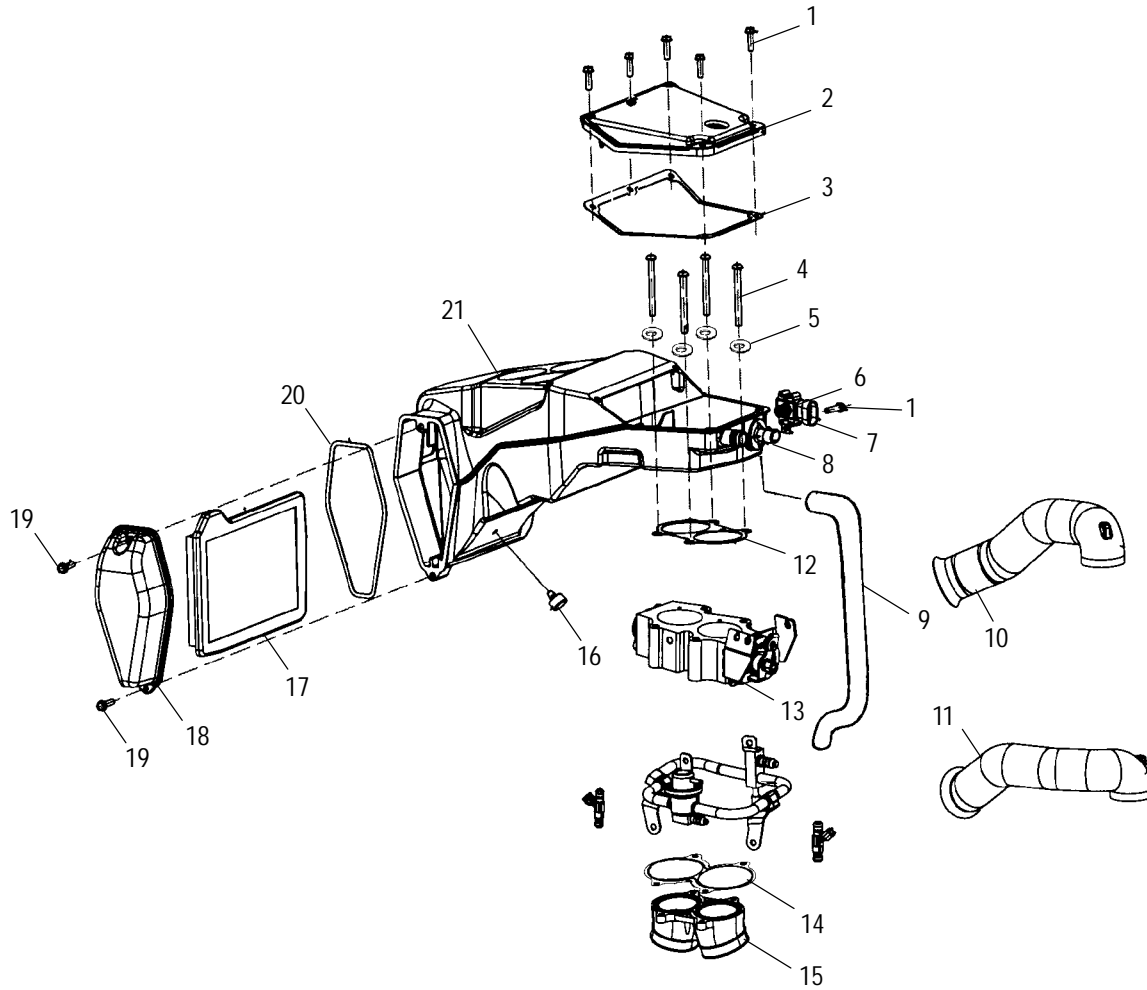
Part numbers may have changed since this microfiche was issued. To ensure that correct parts are received, refer to the Electronic Catalog, which is updated monthly.

Ref.	Part No.	Qty.	Description	Ref.	Part No.	Qty.	Description
1	1013123-067	1	Guard, Belt, Upper	8	5132748	1	Sprocket, Drive, 30T
2	7517838	2	Screw	9	3610057	1	Seal
3	7517259	5	Screw	10	5132702	1	Sleeve, Seal
4	5132172	1	Cover, Sprocket, Outer	11	3610056	1	O-Ring
5	7517272	2	Screw	12	3211085	1	Belt, Drive
6	5244114	1	Lock, Plate	13	1013435	1	Guard, Belt, Lower
7	7547020	1	Nut	14	7517704	3	Screw

6/00

AIR BOX

STANDARD CRUISER V01CB15CC and STANDARD CRUISER V01CB15CG and STANDARD CRUISER V01CB15CJ and STANDARD CRUISER V01CB15DA and STANDARD CRUISER V01CB15DC and STANDARD CRUISER V01CB15DG and STANDARD CRUISER V01CB15DJ and STANDARD CRUISER V01CB15LC and STANDARD CRUISER V01CB15LG and STANDARD CRUISER V01CB15LJ and STANDARD CRUISER V01CB15UC and STANDARD CRUISER V01CB15UG and STANDARD CRUISER V01CB15UJ



Part numbers may have changed since this microfiche was issued. To ensure that correct parts are received, refer to the Electronic Catalog, which is updated monthly.

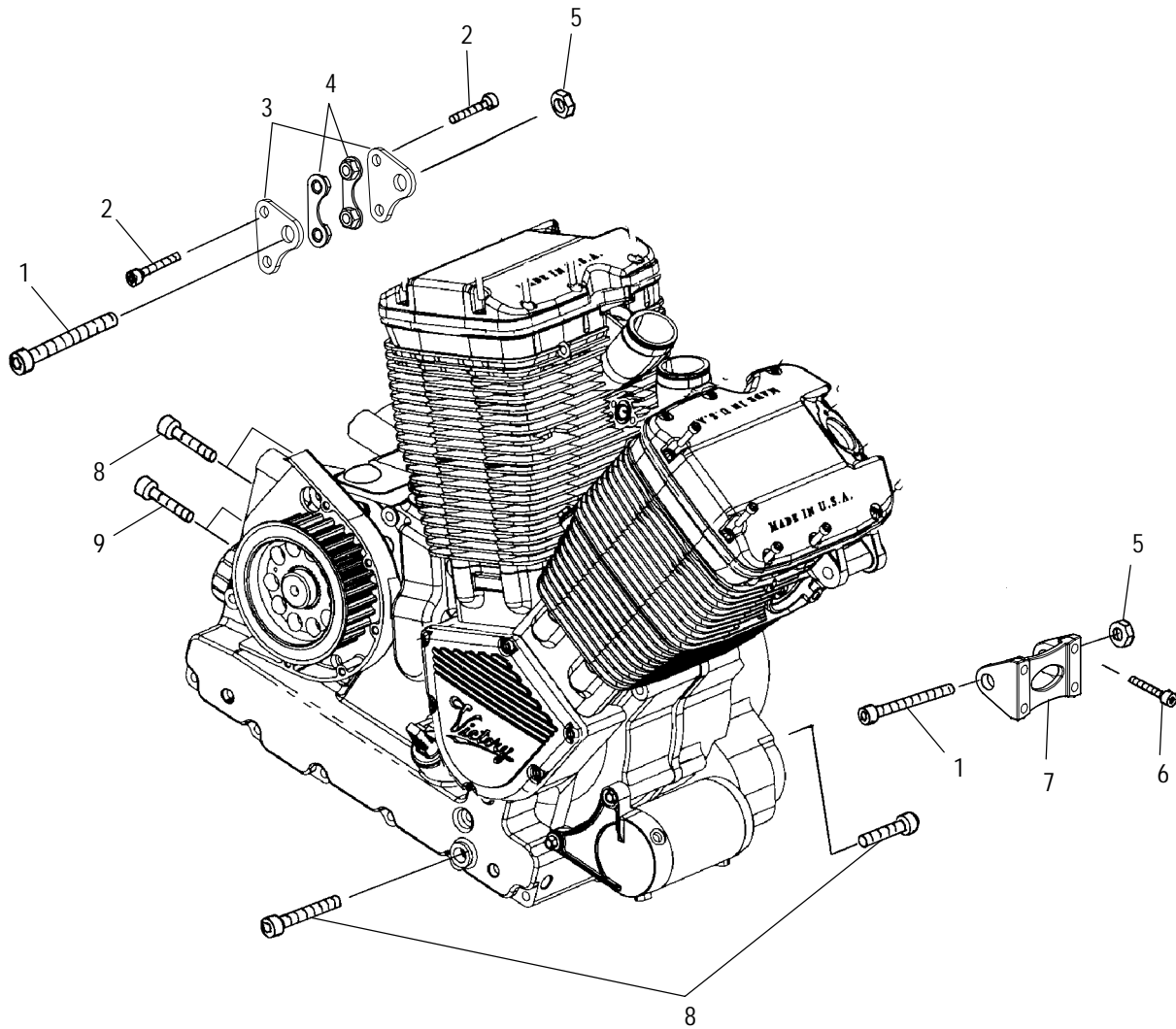
Ref.	Part No.	Qty.	Description
1	7517842	6	Screw
2	5433466	1	Cover, Airbox
3	5811867	1	Seal, Airbox Cover
4	7517726	4	Screw, Button Head
5	7556121	4	Washer, Flat
6	-----	1	Sensor, MAP (See Electrical Pg. B9, Ref. 12)
7	5211907	1	Bracket, MAP Sensor
8	-----	1	Sensor, Air Temperature (See Electrical Pg. B9, Ref. 8)
9	5811871	1	Hose, Breather
10	5433471	1	Tube, Intake, RH

Ref.	Part No.	Qty.	Description
11	5433470	1	Tube, Intake, LH
12	5811908	1	Gasket, Airbox
13	-----	1	Asm., Throttle Body (See Fuel System Pg. D2, Ref. 14)
14	5811868	1	Seal, Throttle Body/Adapter
15	1253173	1	Adaptor, Throttle Body
16	5811869	1	Bumper, Rubber
17	7080858	1	Filter, Air
18	5433469	1	Cover, Air Filter
19	7517816	2	Screw
20	5811866	1	Seal, Filter, Access Hatch
21	1013056	1	Asm., Airbox

6/00

ENGINE MOUNTING

STANDARD CRUISER V01CB15CC and STANDARD CRUISER V01CB15CG and STANDARD CRUISER V01CB15CJ and STANDARD CRUISER V01CB15DA and STANDARD CRUISER V01CB15DC and STANDARD CRUISER V01CB15DG and STANDARD CRUISER V01CB15DJ and STANDARD CRUISER V01CB15LC and STANDARD CRUISER V01CB15LG and STANDARD CRUISER V01CB15LJ and STANDARD CRUISER V01CB15UC and STANDARD CRUISER V01CB15UG and STANDARD CRUISER V01CB15UJ



Part numbers may have changed since this microfiche was issued. To ensure that correct parts are received, refer to the Electronic Catalog, which is updated monthly.

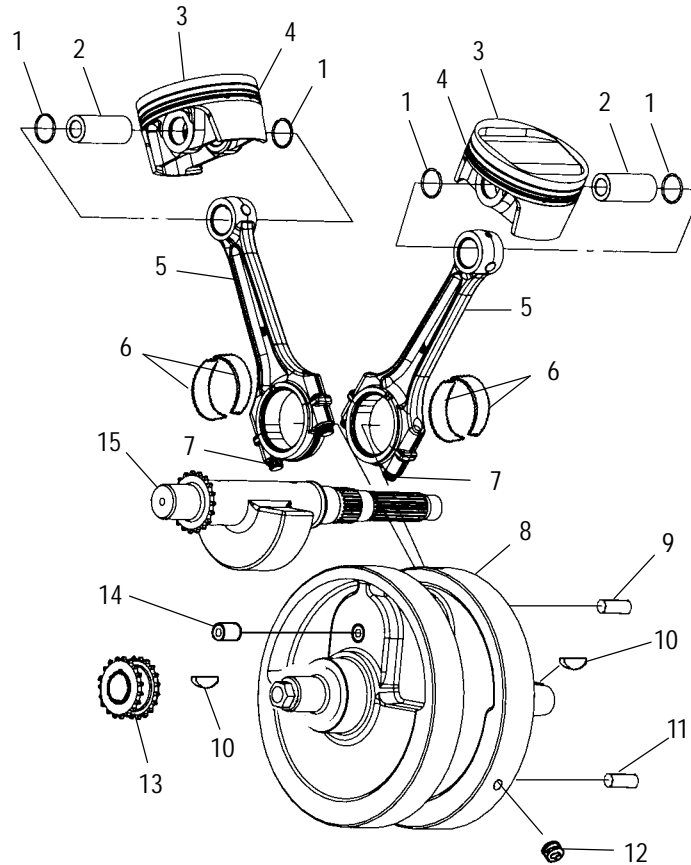
Ref.	Part No.	Qty.	Description
1	7517663	2	Screw
2	7517839	4	Screw
3	5211830-067	2	Bracket, Engine Mount, Rear
4	1012747-067	2	Bracket, Nut Retainer
5	7547123	2	Nut

Ref.	Part No.	Qty.	Description
6	7517838	4	Screw
7	5131664-067	1	Bracket, Engine Mount, Upper Front
8	7517526	4	Screw
9	7517554	2	Screw

8/00

CRANKSHAFT

STANDARD CRUISER V01CB15CC and STANDARD CRUISER V01CB15CG and STANDARD CRUISER V01CB15CJ and STANDARD CRUISER V01CB15DA and STANDARD CRUISER V01CB15DC and STANDARD CRUISER V01CB15CG and STANDARD CRUISER V01CB15CJ and STANDARD CRUISER V01CB15LC and STANDARD CRUISER V01CB15LG and STANDARD CRUISER V01CB15LJ and STANDARD CRUISER V01CB15UC and STANDARD CRUISER V01CB15UG and STANDARD CRUISER V01CB15UJ

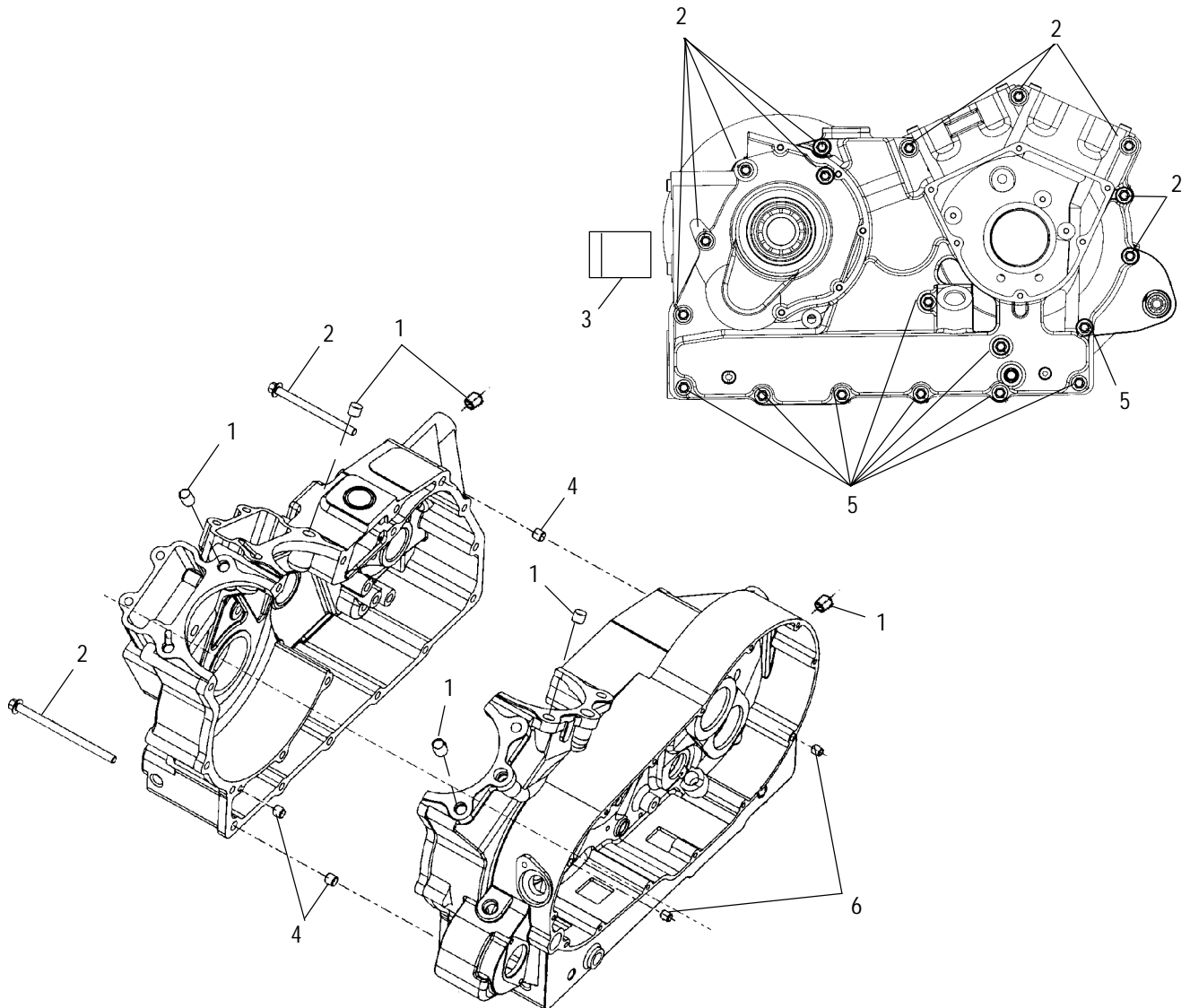


Part numbers may have changed since this microfiche was issued. To ensure that correct parts are received, refer to the Electronic Catalog, which is updated monthly.

Ref.	Part No.	Qty.	Description	Ref.	Part No.	Qty.	Description
1	7710479	4	Ring, Retaining	8	1201729	1	Asm., Crankshaft (Incl. 10,12,13,14)
2	5131860	2	Pin, Wrist	9	7661045	1	Pin, Solid
3	3021082	2	Asm., Piston (Incl. Piston, Rings, Clips, Pin)	10	7721122	2	Key
4	2201434	2	Kit - Piston Ring (Incl. Top, Middle, Bottom Rings)	11	7663010	1	Pin, Solid
5	3023007	2	Asm., Connecting Rod(Incl. 7)	12	7051538	1	Plug
6	3585707	4	Bearing, Rod	13	3221083	1	Sprocket, 19T, 4W, Dual
7	7517269	4	Screw	14	7051528	1	Plug
				15	5132164	1	Shaft, Balance

CRANKCASE

STANDARD CRUISER V01CB15CC and STANDARD CRUISER V01CB15CG and STANDARD CRUISER V01CB15CJ and STANDARD CRUISER V01CB15DA and STANDARD CRUISER V01CB15DC and STANDARD CRUISER V01CB15CG and STANDARD CRUISER V01CB15CJ and STANDARD CRUISER V01CB15LC and STANDARD CRUISER V01CB15LG and STANDARD CRUISER V01CB15LJ and STANDARD CRUISER V01CB15UC and STANDARD CRUISER V01CB15UG and STANDARD CRUISER V01CB15UJ



Part numbers may have changed since this microfiche was issued. To ensure that correct parts are received, refer to the Electronic Catalog, which is updated monthly.

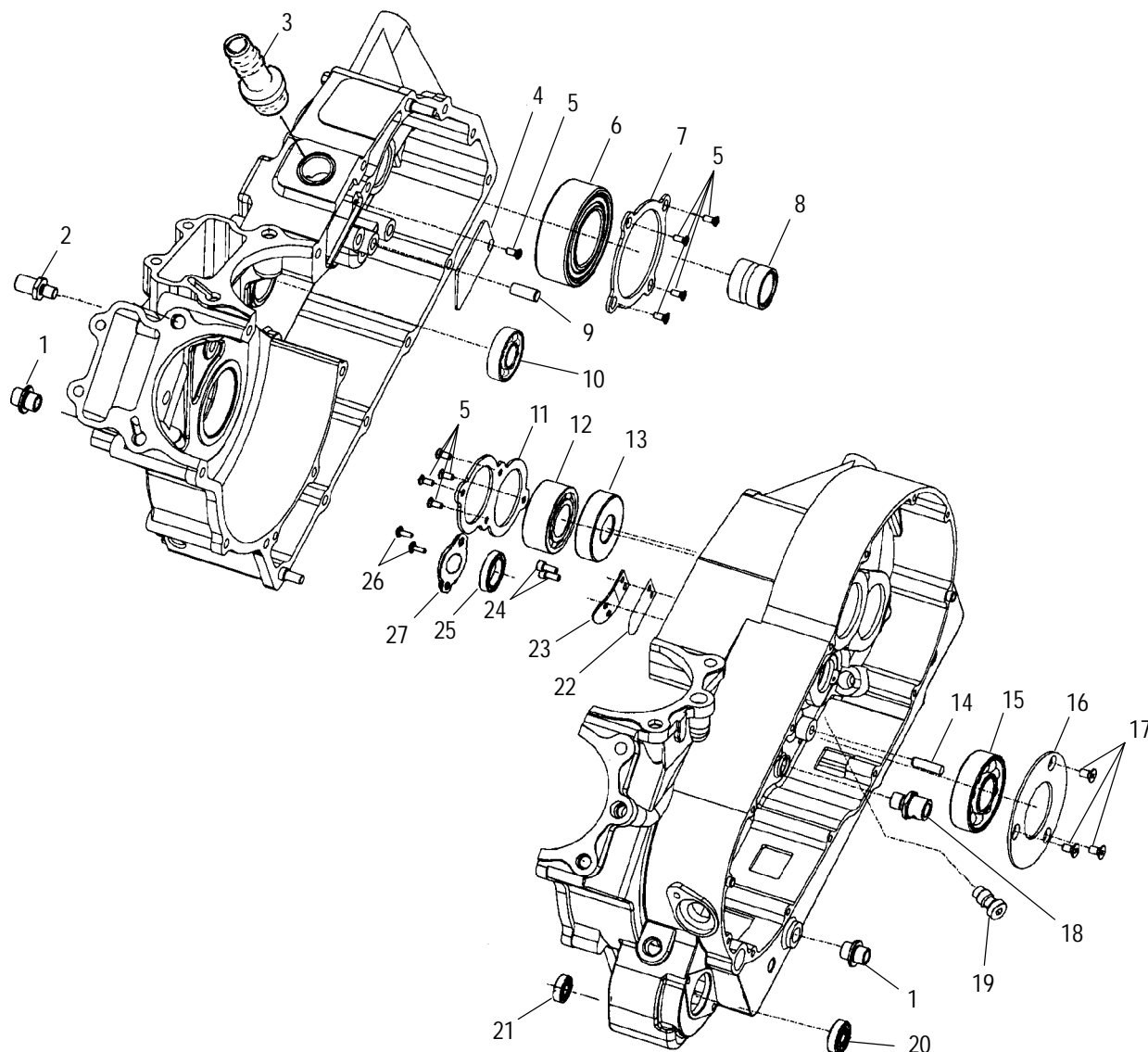
Ref.	Part No.	Qty.	Description
	1202059	1	Asm., Crankcase (Incl. 1,4,6)
1	7663008	6	Dowel
2	7517409	8	Screw
3	1013286	1	Bracket, Speed Sensor

Ref.	Part No.	Qty.	Description
4	7663005	3	Dowel
5	7517719	9	Screw
6	7663007	2	Dowel

6/00

CRANKCASE BEARINGS

STANDARD CRUISER V01CB15CC and STANDARD CRUISER V01CB15CG and STANDARD CRUISER V01CB15CJ and STANDARD CRUISER V01CB15DA and STANDARD CRUISER V01CB15DC and STANDARD CRUISER V01CB15CG and STANDARD CRUISER V01CB15CJ and STANDARD CRUISER V01CB15LC and STANDARD CRUISER V01CB15LG and STANDARD CRUISER V01CB15LJ and STANDARD CRUISER V01CB15UC and STANDARD CRUISER V01CB15UG and STANDARD CRUISER V01CB15UJ



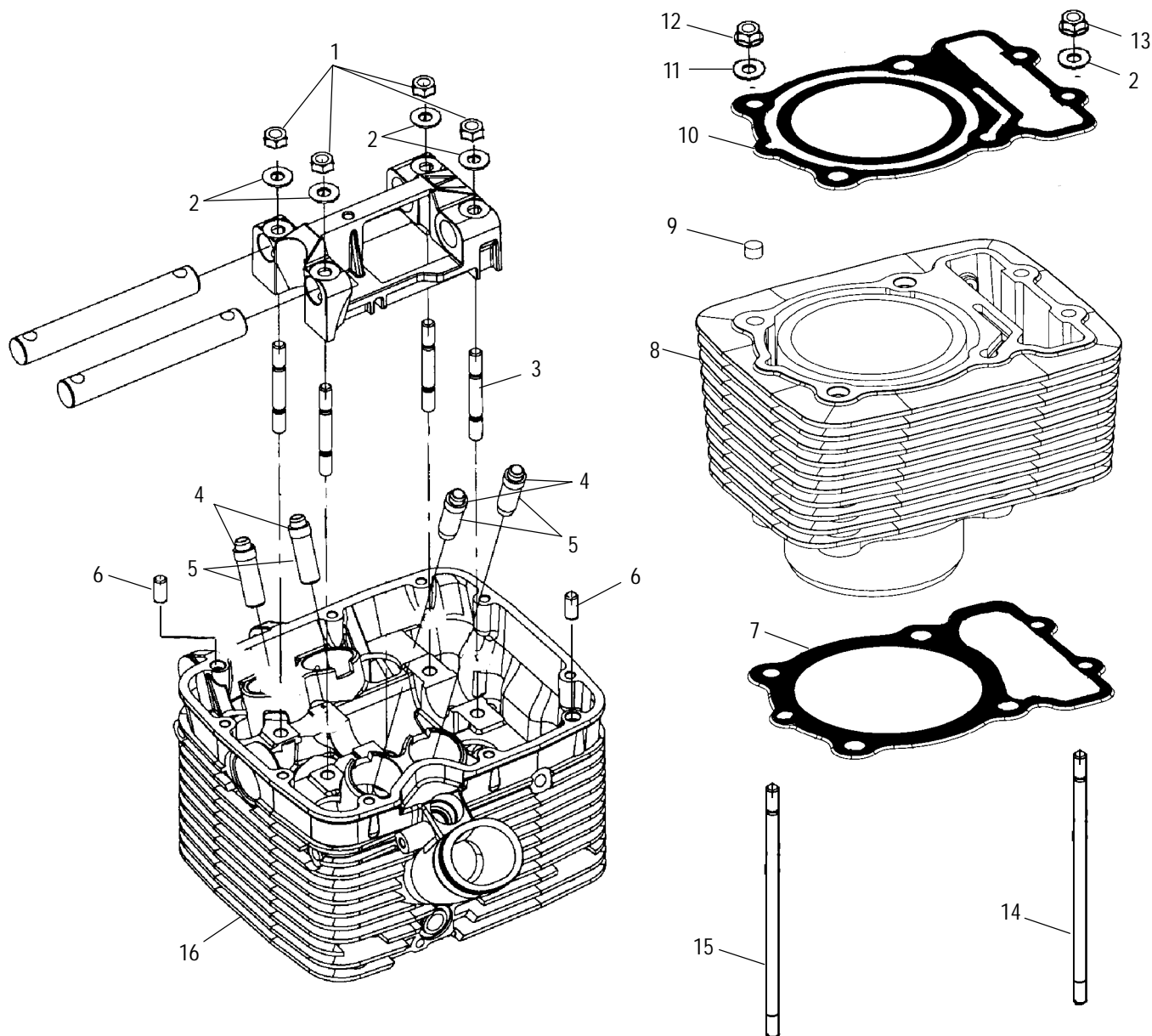
Part numbers may have changed since this microfiche was issued. To ensure that correct parts are received, refer to the Electronic Catalog, which is updated monthly.

Ref.	Part No.	Qty.	Description
1	5020953	2	Tophat, Engine Mount
2	5010430	1	Adaptor, Cam Chain Guide
3	5132270	1	Fitting, Breather
4	5131792	1	Plate, Breather Baffle
5	7517255	9	Screw
6	3513515	1	Bearing
7	5211817	1	Plate, Bearing Retaining (Main)
8	3584007	1	Bearing
9	7661020	1	Pin, Solid
10	3552102	1	Bearing, Needle
11	5211774	1	Plate, Bearing Retaining
12	3513524	1	Bearing, Ball, Double Row
13	3513512	1	Bearing, Ball
14	7661101	1	Pin, Solid

Ref.	Part No.	Qty.	Description
15	3513525	1	Bearing, Ball
16	5211773	1	Plate, Retaining, Bearing (Balance)
17	7517598	3	Screw
18	5132139	1	Adaptor, Shift Shaft
19	5132226	1	Jet, Lubrication
20	3513518	1	Bearing, Ball
21	3514313	1	Bearing, Ball
22	5131793	1	Plate, Reed Valve
23	5131791	1	Plate, Reed Backer
24	7517276	2	Screw
25	3513511	1	Bearing, Ball
26	7517797	2	Screw
27	5244477	1	Plate, Bearing

CYLINDER and HEAD

STANDARD CRUISER V01CB15CC and STANDARD CRUISER V01CB15CG and STANDARD CRUISER V01CB15CJ and STANDARD CRUISER V01CB15DA and STANDARD CRUISER V01CB15DC and STANDARD CRUISER V01CB15CG and STANDARD CRUISER V01CB15CJ and STANDARD CRUISER V01CB15LC and STANDARD CRUISER V01CB15LG and STANDARD CRUISER V01CB15LJ and STANDARD CRUISER V01CB15UC and STANDARD CRUISER V01CB15UG and STANDARD CRUISER V01CB15UJ



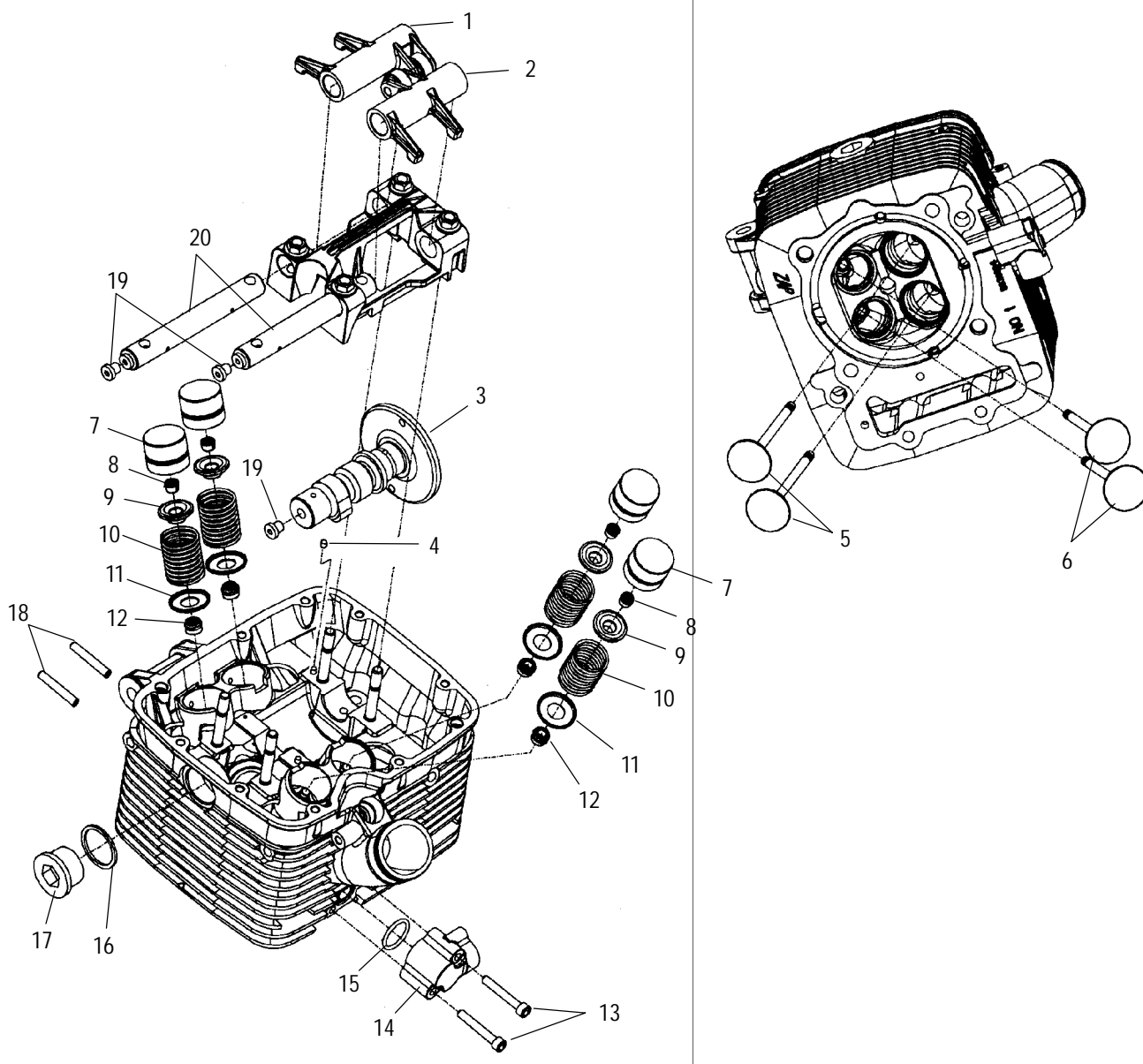
Part numbers may have changed since this microfiche was issued. To ensure that correct parts are received, refer to the Electronic Catalog, which is updated monthly.

Ref.	Part No.	Qty.	Description
	2201281	1	Kit - Gasket, Top End
	2201282	1	Kit - Gasket (Complete, V92C)
1	7547080	8	Nut
2	7556043	12	Washer, Flat
3	5131743	8	Stud
4	3610064	8	Seal, Valve Stem
5	3021077	8	Guide, Valve
6	7663007	4	Dowel
7	5244305	2	Gasket, Base
8	5131491	2	Cylinder
9	7663008	4	Dowel

Ref.	Part No.	Qty.	Description
10	5244306	1	Gasket, Head, Front
	5244307	1	Gasket, Head, Rear
11	7555986	8	Washer, Flat
12	7547017	8	Nut
13	7547014	4	Nut
14	5131476	4	Stud, Cylinder Mounting
15	5131475	8	Stud, Cylinder Mounting
16	3023022	1	Head, Cylinder, Front (Incl. 1-5 and Shaft/Rocker Arm)
	3023024	1	Head, Cylinder, Rear (Incl. 1-5 and Shaft/Rocker Arm)

VALVE TRAIN

STANDARD CRUISER V01CB15CC and STANDARD CRUISER V01CB15CG and STANDARD CRUISER V01CB15CJ and STANDARD CRUISER V01CB15DA and STANDARD CRUISER V01CB15DC and STANDARD CRUISER V01CB15CG and STANDARD CRUISER V01CB15CJ and STANDARD CRUISER V01CB15LC and STANDARD CRUISER V01CB15LG and STANDARD CRUISER V01CB15LJ and STANDARD CRUISER V01CB15UC and STANDARD CRUISER V01CB15UG and STANDARD CRUISER V01CB15UJ



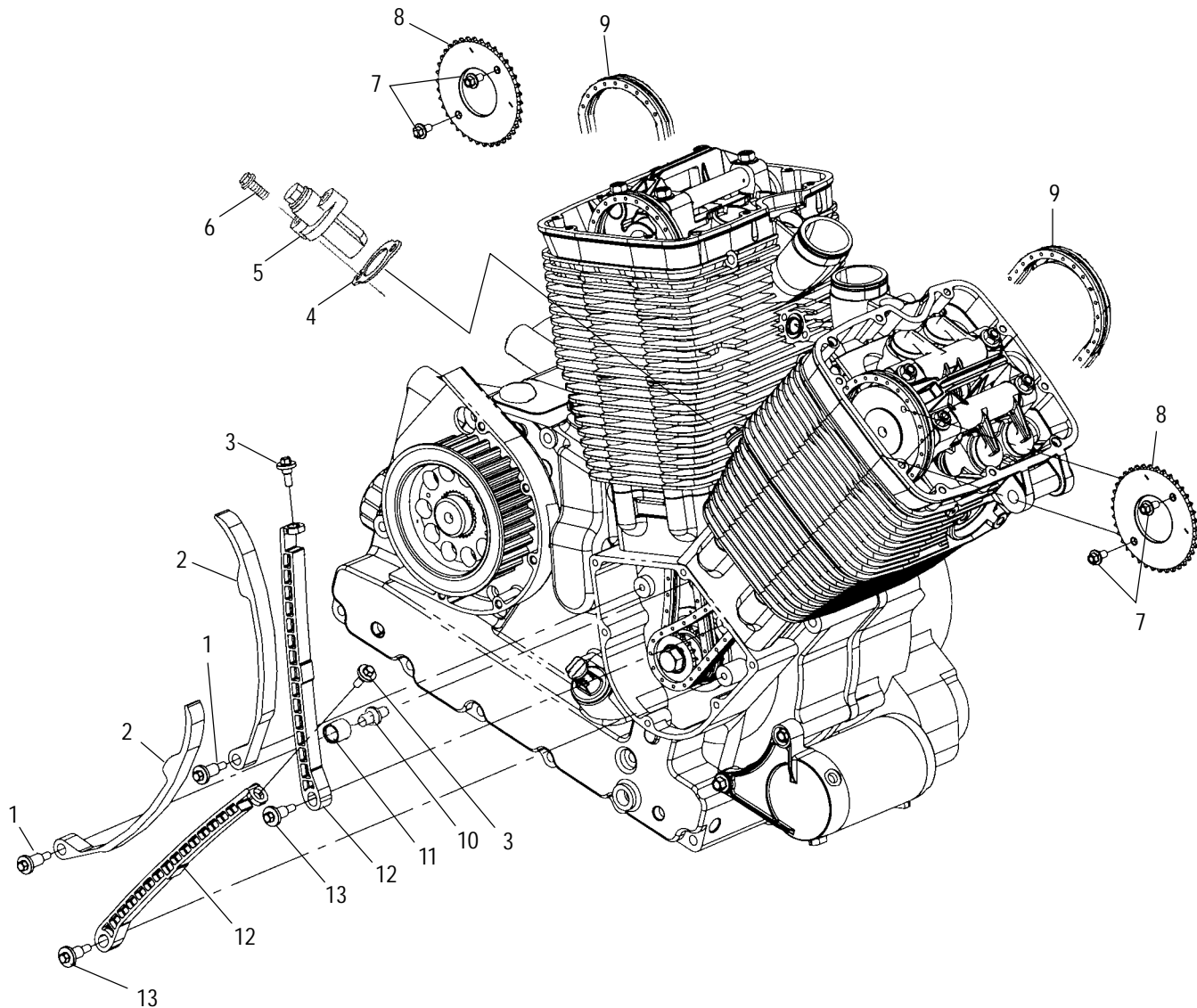
Part numbers may have changed since this microfiche was issued. To ensure that correct parts are received, refer to the Electronic Catalog, which is updated monthly.

Ref.	Part No.	Qty.	Description
1	3022048	2	Asm., Rocker Arm, 1
2	3022049	2	Asm., Rocker Arm, 2
3	5132282	1	Camshaft, Front
	5132283	1	Camshaft, Rear
4	7661023	4	Pin, Solid
5	3022042	4	Valve, Intake
6	3022043	4	Valve, Exhaust
7	3022038	8	Lifter
8	7010081	16	Keeper, Valve
9	3022045	8	Cap, Valve
10	7041592	8	Spring, Valve

Ref.	Part No.	Qty.	Description
11	3022040	8	Seat, Valve Spring
12	3610064	8	Seal, Valve Stem
13	7517261	4	Screw
14	5131779	1	Adaptor, Front
	5131780	1	Adaptor, Rear
15	5411331	2	O-Ring
16	7556023	2	Washer, Flat
17	3022046	2	Plug
18	5132040	4	Stud, Exhaust Mount
19	3022062	2	Plug
20	5333546	4	Shaft, Rocker Arm

CAMCHAIN and TENSIONER

STANDARD CRUISER V01CB15CC and STANDARD CRUISER V01CB15CG and STANDARD CRUISER V01CB15CJ and STANDARD CRUISER V01CB15DA and STANDARD CRUISER V01CB15DC and STANDARD CRUISER V01CB15CG and STANDARD CRUISER V01CB15CJ and STANDARD CRUISER V01CB15LC and STANDARD CRUISER V01CB15LG and STANDARD CRUISER V01CB15LJ and STANDARD CRUISER V01CB15UC and STANDARD CRUISER V01CB15UG and STANDARD CRUISER V01CB15UJ



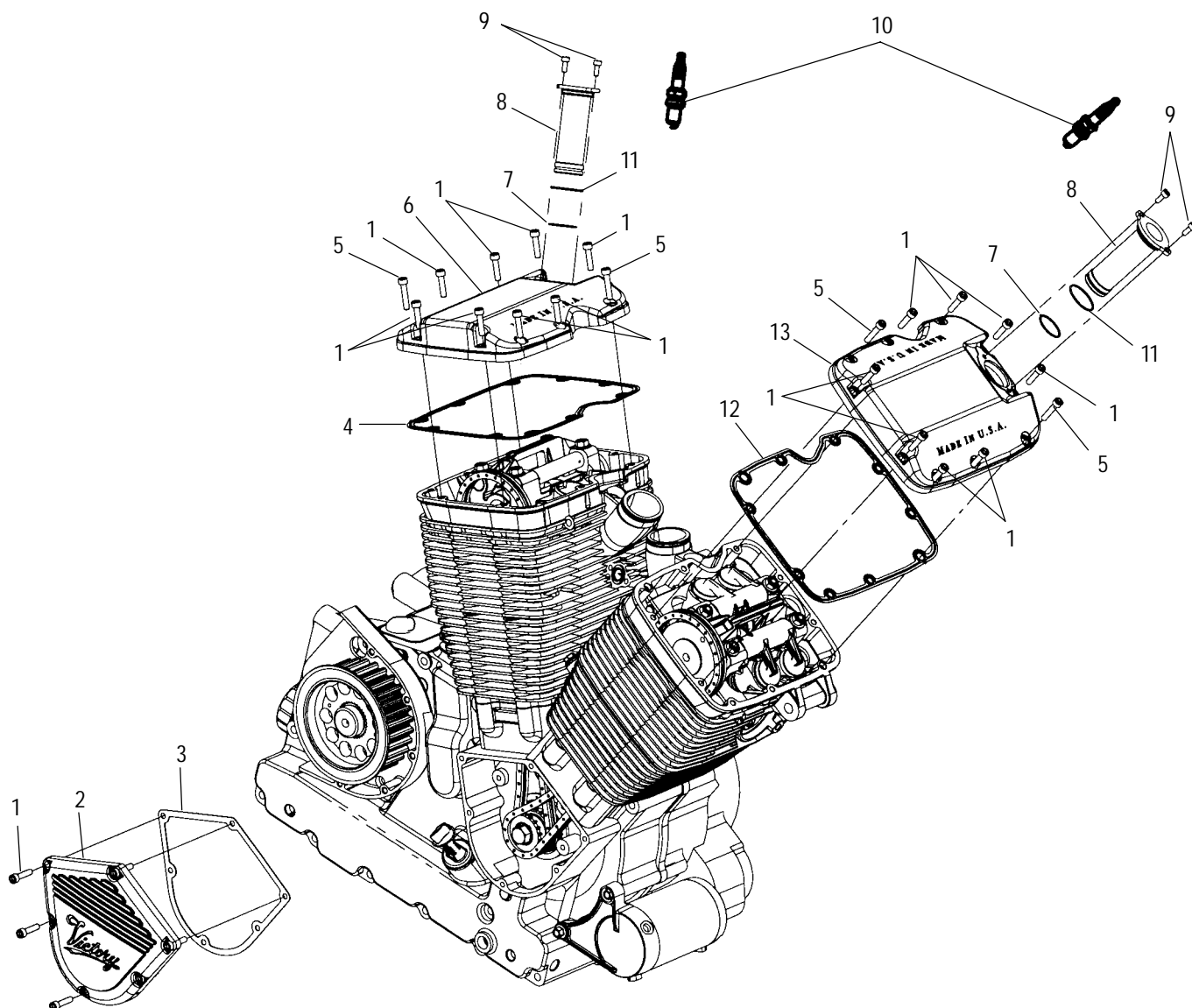
Part numbers may have changed since this microfiche was issued. To ensure that correct parts are received, refer to the Electronic Catalog, which is updated monthly.

Ref.	Part No.	Qty.	Description
1	7517286	2	Bolt
2	3060009	2	Guide, Rotating Camchain
3	7516409	2	Bolt
4	5830117	2	Gasket, Tensioner
5	3060007	2	Tensioner, Camchain
6	7517259	4	Screw
7	7517257	4	Screw

Ref.	Part No.	Qty.	Description
8	3222091	2	Sprocket, 38T, Camshaft
9	3224063	2	Chain, Camshaft
10	5010430	1	Adaptor, Cam Chain Guide
11	3060011	1	Spacer
12	3060008	2	Guide, Fixed Camchain
13	7517271	2	Bolt

CAM and VALVE COVERS

STANDARD CRUISER V01CB15CC and STANDARD CRUISER V01CB15CG and STANDARD CRUISER V01CB15CJ and STANDARD CRUISER V01CB15DA and STANDARD CRUISER V01CB15DC and STANDARD CRUISER V01CB15CG and STANDARD CRUISER V01CB15CJ and STANDARD CRUISER V01CB15LC and STANDARD CRUISER V01CB15LG and STANDARD CRUISER V01CB15LJ and STANDARD CRUISER V01CB15UC and STANDARD CRUISER V01CB15UG and STANDARD CRUISER V01CB15UJ



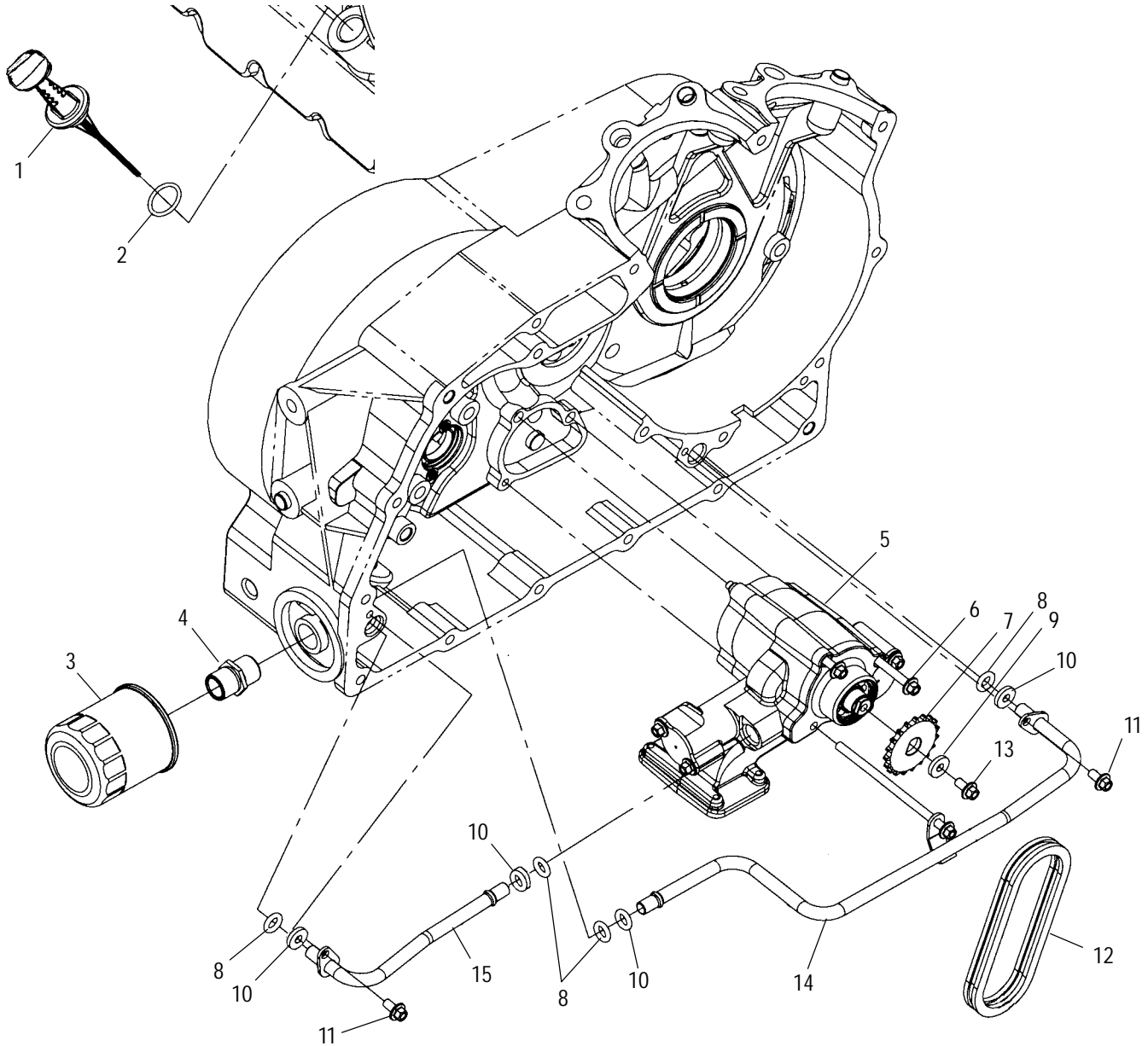
Part numbers may have changed since this microfiche was issued. To ensure that correct parts are received, refer to the Electronic Catalog, which is updated monthly.

Ref.	Part No.	Qty.	Description
1	7517259	22	Screw
2	5132176	1	Cover, Cam Drive
3	5830118	1	Gasket, Cam Cover
4	5830142	1	Gasket, Valve Cover, Rear
5	7517301	4	Screw
6	5132171	1	Cover, Valve, Rear
7	5411279	2	O-Ring

Ref.	Part No.	Qty.	Description
8	5630726	2	Tube, Spark Plug
9	7517276	4	Screw
10	3070177	2	Plug, Spark, Champion RA8GHC
11	5411278	2	O-Ring
12	5830124	1	Gasket, Valve Cover, Front
13	5132170	1	Cover, Valve, Front

OIL PUMP MOUNTING

STANDARD CRUISER V01CB15CC and STANDARD CRUISER V01CB15CG and STANDARD CRUISER V01CB15CJ and STANDARD CRUISER V01CB15DA and STANDARD CRUISER V01CB15DC and STANDARD CRUISER V01CB15CG and STANDARD CRUISER V01CB15CJ and STANDARD CRUISER V01CB15LC and STANDARD CRUISER V01CB15LG and STANDARD CRUISER V01CB15LJ and STANDARD CRUISER V01CB15UC and STANDARD CRUISER V01CB15UG and STANDARD CRUISER V01CB15UJ



Part numbers may have changed since this microfiche was issued. To ensure that correct parts are received, refer to the Electronic Catalog, which is updated monthly.

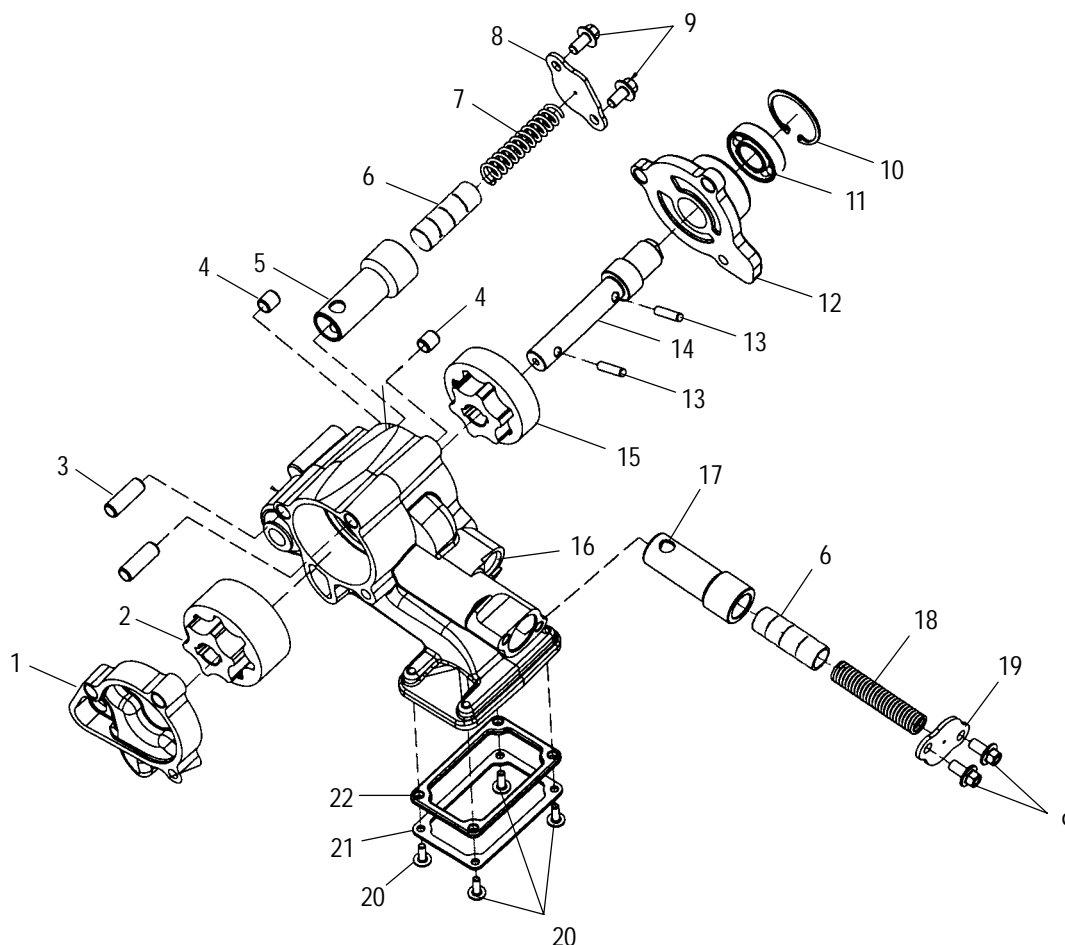
Ref.	Part No.	Qty.	Description
1	5433327	1	Dipstick, Oil Fill
2	5411331	1	O-Ring
3	3084963	1	Filter, Oil
4	2540023	1	Nipple
5	-----	1	Asm., Oil Pump (See Oil Pump Pg. C9 for Details)
6	7517256	3	Screw
7	3221082	1	Sprocket, 19T

Ref.	Part No.	Qty.	Description
8	5411231	4	O-Ring
9	7556032	1	Washer, Flat
10	7556026	4	Washer, Flat
11	7517257	2	Screw
12	3224062	1	Chain
13	7517633	1	Screw
14	5242222	1	Tube, Oil, Filter/Crankcase
15	5242223	1	Tube, Oil, Pump/Filter

8/99

OIL PUMP

STANDARD CRUISER V01CB15CC and STANDARD CRUISER V01CB15CG and STANDARD CRUISER V01CB15CJ and STANDARD CRUISER V01CB15DA and STANDARD CRUISER V01CB15DC and STANDARD CRUISER V01CB15CG and STANDARD CRUISER V01CB15CJ and STANDARD CRUISER V01CB15LC and STANDARD CRUISER V01CB15LG and STANDARD CRUISER V01CB15LJ and STANDARD CRUISER V01CB15UC and STANDARD CRUISER V01CB15UG and STANDARD CRUISER V01CB15UJ



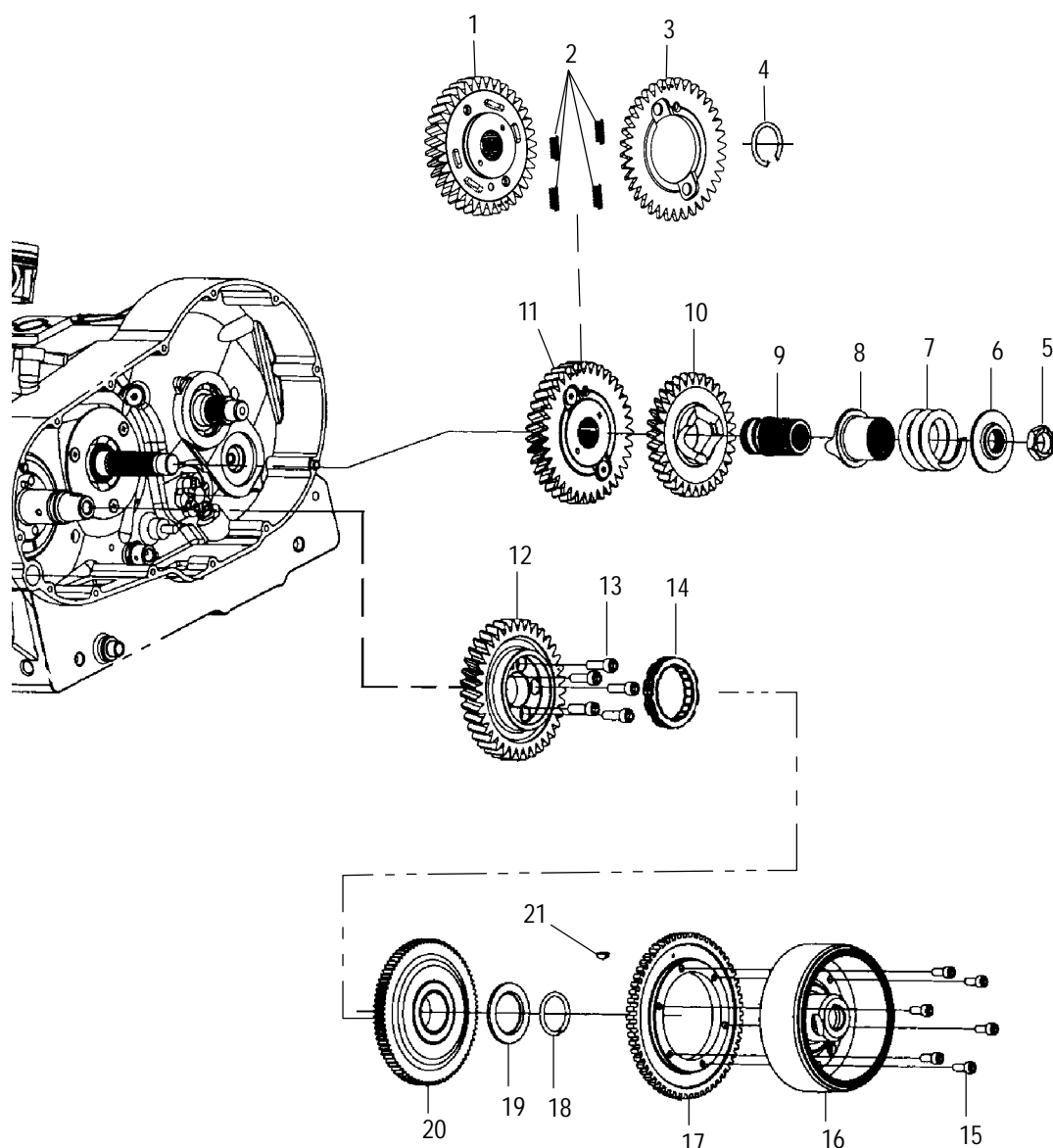
Part numbers may have changed since this microfiche was issued. To ensure that correct parts are received, refer to the Electronic Catalog, which is updated monthly.

Ref.	Part No.	Qty.	Description	Ref.	Part No.	Qty.	Description
1	5132174	1	Base, Oil Pump Body	12	5132169	1	Cover, Oil Pump
2	2540065	1	Rotor, Set Cooling	13	7661065	2	Pin, Solid
3	7663014	2	Dowel	14	2540061	1	Shaft, Oil Pump
4	7663007	2	Dowel	15	2540062	1	Rotor, Set, Lubrication
5	2540019	1	Body, Pressure Relief, Cooling	16	5132291	1	Body, Oil Pump
6	2540075	2	Piston, Relief, Oil Pump, Grooved	17	2540009	1	Body, Pressure Relief, Lubrication
7	2540014	1	Spring, Pressure Relief, Cooling	18	2540018	1	Spring, Pressure Relief, Lubrication
8	5211898	1	Plate, Retainer 1	19	5211899	1	Plate, Retainer 2
9	7517257	4	Screw	20	7517275	4	Screw
10	7710403	1	Ring, Retaining	21	5242999	1	Plate, Support
11	3513517	1	Bearing, Ball	22	2540020	1	Screen, Oil Intake

6/00

PRIMARY DRIVE

STANDARD CRUISER V01CB15CC and STANDARD CRUISER V01CB15CG and STANDARD CRUISER V01CB15CJ and STANDARD CRUISER V01CB15DA and STANDARD CRUISER V01CB15DC and STANDARD CRUISER V01CB15CG and STANDARD CRUISER V01CB15CJ and STANDARD CRUISER V01CB15LC and STANDARD CRUISER V01CB15LG and STANDARD CRUISER V01CB15LJ and STANDARD CRUISER V01CB15UC and STANDARD CRUISER V01CB15UG and STANDARD CRUISER V01CB15UJ



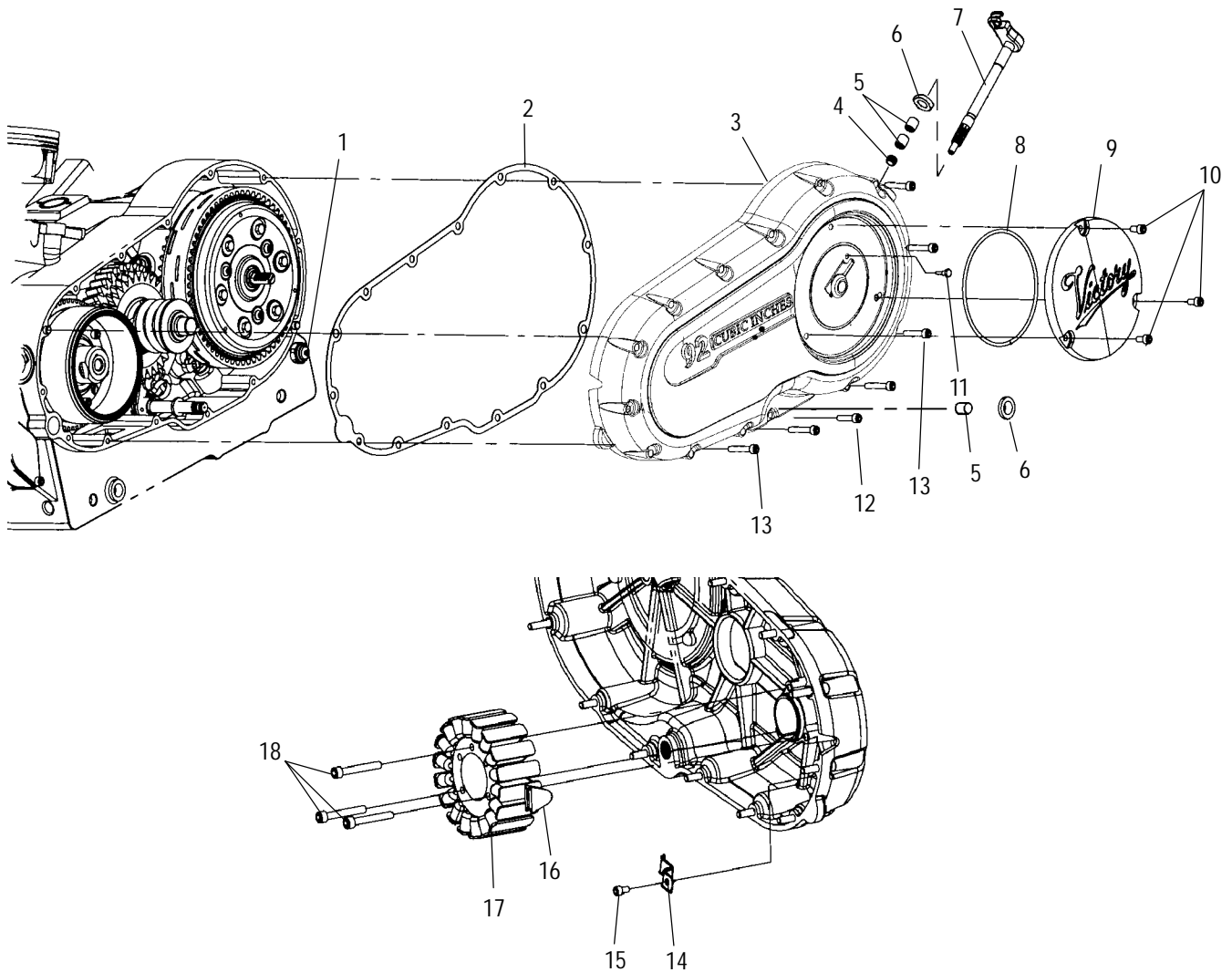
Part numbers may have changed since this microfiche was issued. To ensure that correct parts are received, refer to the Electronic Catalog, which is updated monthly.

Ref.	Part No.	Qty.	Description
1	6230190	1	Gear, Split, Drive, 37T
2	7041579	4	Spring, Split Gear
3	6230191	1	Gear, Split, Backlash
4	7710511	1	Ring, Retaining
5	7547019	1	Nut
6	5131699	1	Flange, Compensator
7	7041614	1	Spring, Compensator
8	6110017	1	Slider, Compensator
9	6110016	1	Compensator
10	6230192	1	Gear, Compensator, 30T
11	1341347	1	Asm., Split Gear, 37T (Incl. 1-4)

Ref.	Part No.	Qty.	Description
12	6230193	1	Gear, Crankshaft
13	7517260	5	Screw
14	4060156	1	Clutch, Starter Drive
15	7517272	6	Screw
16	3031005	1	Flywheel
17	3031007	1	Adaptor, Flywheel
18	7710490	1	Ring, Retaining, 35 Degree
19	7556038	1	Washer, Flat
20	1201744	1	Asm., Crankshaft Gear Starter Drive
21	7721122	1	Key, Woodruff

PRIMARY COVER

STANDARD CRUISER V01CB15CC and STANDARD CRUISER V01CB15CG and STANDARD CRUISER V01CB15CJ and STANDARD CRUISER V01CB15DA and STANDARD CRUISER V01CB15DC and STANDARD CRUISER V01CB15CG and STANDARD CRUISER V01CB15CJ and STANDARD CRUISER V01CB15LC and STANDARD CRUISER V01CB15LG and STANDARD CRUISER V01CB15LJ and STANDARD CRUISER V01CB15UC and STANDARD CRUISER V01CB15UG and STANDARD CRUISER V01CB15UJ



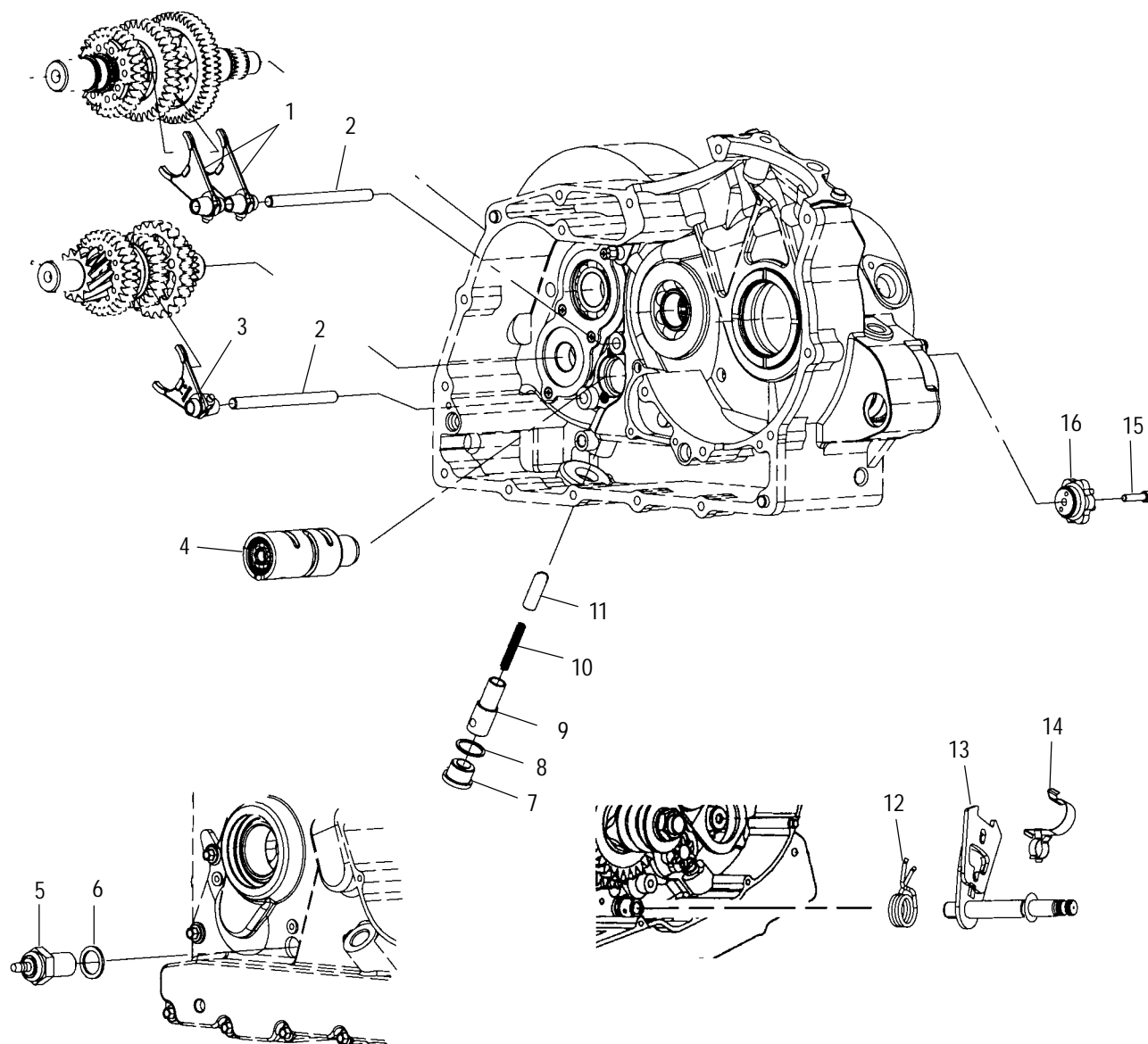
Part numbers may have changed since this microfiche was issued. To ensure that correct parts are received, refer to the Electronic Catalog, which is updated monthly.

Ref.	Part No.	Qty.	Description
1	-----	1	Sensor, Oil Pressure (See Electrical Pg. B9, Ref. 7)
2	5830119	1	Gasket, Primary Cover
3	1201920	1	Asm. Primary Cover (Incl. 4,5,6)
4	3512106	1	Bearing, Needle
5	3552105	3	Bearing, Needle
6	3610059	2	Seal
7	1013343	1	Pinion, Clutch
8	5411499	1	O-Ring
9	5132175	1	Plate, Emblem

Ref.	Part No.	Qty.	Description
10	7517405	3	Screw
11	7517499	1	Screw
12	7517301	1	Screw
13	7517259	13	Screw
14	5243078	1	Clip, Stator Wire
15	7517515	1	Screw
16	5811837	1	Grommet
17	4060654	1	Stator
18	7517261	3	Screw

SHIFT FORKS/DRUM

STANDARD CRUISER V01CB15CC and STANDARD CRUISER V01CB15CG and STANDARD CRUISER V01CB15CJ and STANDARD CRUISER V01CB15DA and STANDARD CRUISER V01CB15DC and STANDARD CRUISER V01CB15CG and STANDARD CRUISER V01CB15CJ and STANDARD CRUISER V01CB15LC and STANDARD CRUISER V01CB15LG and STANDARD CRUISER V01CB15LJ and STANDARD CRUISER V01CB15UC and STANDARD CRUISER V01CB15UG and STANDARD CRUISER V01CB15UJ



Part numbers may have changed since this microfiche was issued. To ensure that correct parts are received, refer to the Electronic Catalog, which is updated monthly.

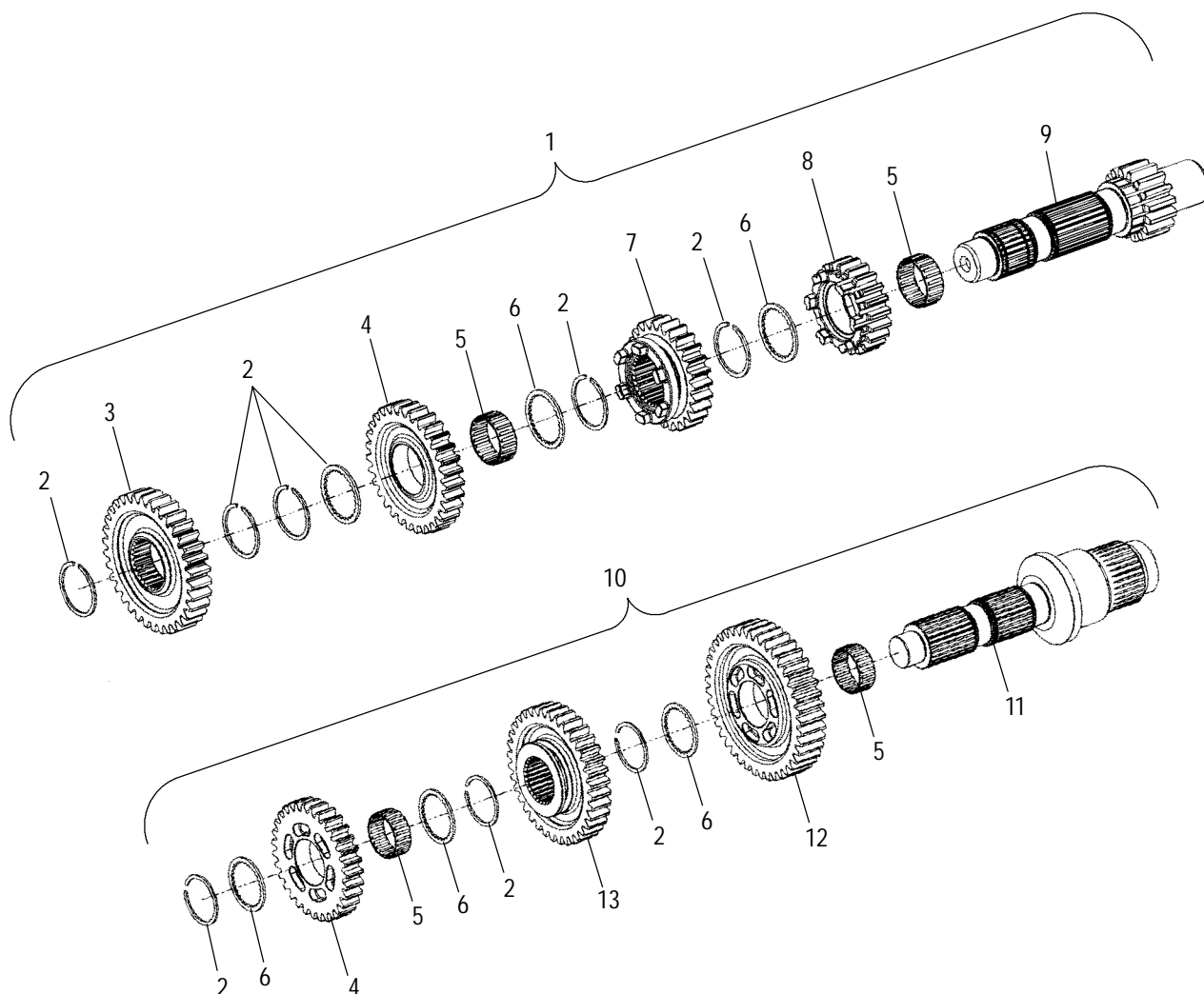
Ref.	Part No.	Qty.	Description
1	5132539	2	Fork, Shift, Mainshaft
2	5132177	2	Rail, Shift
3	5132540	1	Fork, Shift, Countershaft
4	1341346	1	Asm., Shifter Drum (Incl. Bearing, Drum, Pins)
	3513518	1	Bearing, Ball
	5131555	1	Drum
	7661023	2	Pin, Solid
5	-----	1	Switch, Neutral Indicator (See Electrical Pg. B9, Ref. 1)
6	7556154	1	Washer, Flat

Ref.	Part No.	Qty.	Description
7	5131488	1	Plug, Drain
8	7556039	1	Washer, Flat
9	5010464	1	Sleeve
10	7041581	1	Spring
11	5132541	1	Plunger
12	7041583	1	Spring
13	1341317	1	Asm., Shifter Ratchet (Incl. 12,14)
14	7041582	1	Spring
15	7517259	1	Screw
16	5132538	1	Star, Shifter

6/00

TRANSMISSION

STANDARD CRUISER V01CB15CC and STANDARD CRUISER V01CB15CG and STANDARD CRUISER V01CB15CJ and STANDARD CRUISER V01CB15DA and STANDARD CRUISER V01CB15DC and STANDARD CRUISER V01CB15CG and STANDARD CRUISER V01CB15CJ and STANDARD CRUISER V01CB15LC and STANDARD CRUISER V01CB15LG and STANDARD CRUISER V01CB15LJ and STANDARD CRUISER V01CB15UC and STANDARD CRUISER V01CB15UG and STANDARD CRUISER V01CB15UJ



Part numbers may have changed since this microfiche was issued. To ensure that correct parts are received, refer to the Electronic Catalog, which is updated monthly.

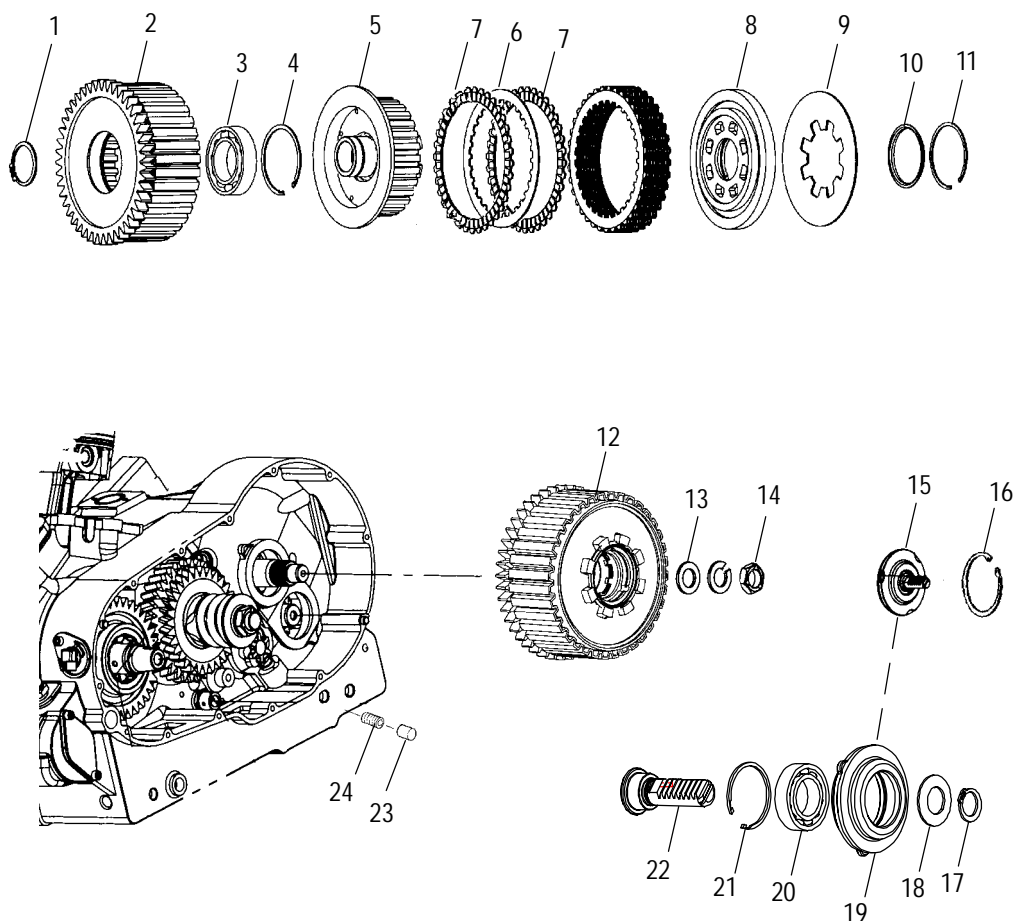
Ref.	Part No.	Qty.	Description
1	3230548	1	Asm., Countershaft (Incl. 2-9)
2	7710455	8	Ring, Retaining
3	6230186	1	Gear, Common, Countershaft, 34T
4	6230182	2	Gear, Mainshaft, 31T
5	3584006	4	Bearing, Roller
6	5211756	6	Washer, Thrust
7	6230183	1	Gear 4th Countershaft, 3rd, 26T

Ref.	Part No.	Qty.	Description
8	6230187	1	Gear 2nd Countershaft, 21T
9	6230195	1	Shaft, Counter
10	3230547	1	Asm., Mainshaft (Incl. 2,4-6,11-13)
11	6230194	1	Shaft, Main
12	6230184	1	Gear, 1st Mainshaft, 41T
13	6230185	1	Gear, 2nd Mainshaft, 36T

6/00

DRIVE CLUTCH

STANDARD CRUISER V01CB15CC and STANDARD CRUISER V01CB15CG and STANDARD CRUISER V01CB15CJ and STANDARD CRUISER V01CB15DA and STANDARD CRUISER V01CB15DC and STANDARD CRUISER V01CB15CG and STANDARD CRUISER V01CB15CJ and STANDARD CRUISER V01CB15LC and STANDARD CRUISER V01CB15LG and STANDARD CRUISER V01CB15LJ and STANDARD CRUISER V01CB15UC and STANDARD CRUISER V01CB15UG and STANDARD CRUISER V01CB15UJ



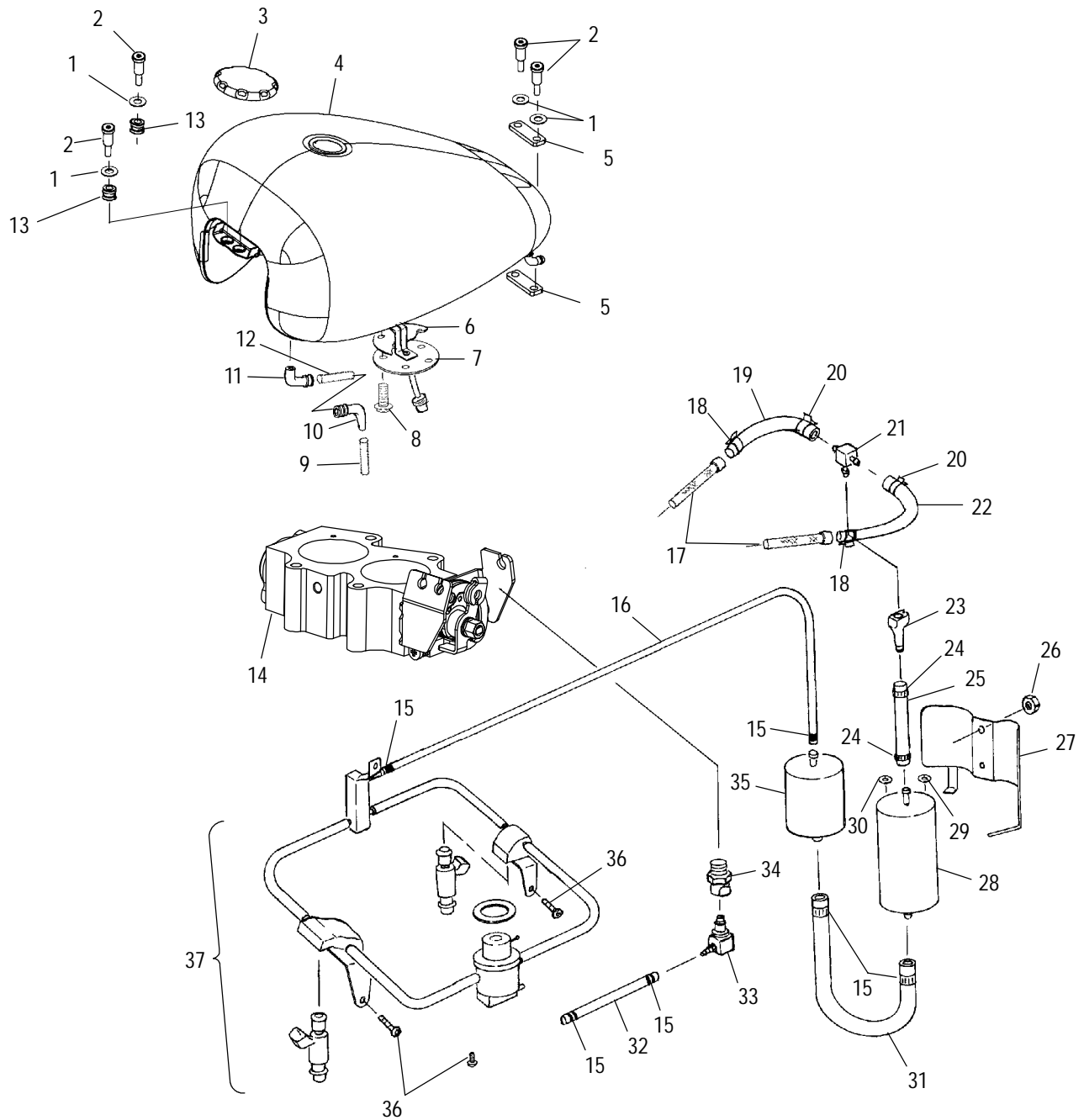
Part numbers may have changed since this microfiche was issued. To ensure that correct parts are received, refer to the Electronic Catalog, which is updated monthly.

Ref.	Part No.	Qty.	Description
1	7670122	1	Clip, External
2	1341348	1	Asm., Gear/Basket
3	3514358	1	Bearing, Ball
4	7670123	1	Circlip, Internal
5	5132704	1	Hub, Clutch
6	3230546	9	Plate, Separator
7	3230545	10	Plate, Friction
8	5132703	1	Plate, Pressure
9	7041944	1	Spring, Clutch, Diaphragm
10	7710510	1	Ring, Snap
11	7670124	1	Circlip, Internal
12	1321898	1	Asm., Clutch
	1321899	1	Asm., Clutch Pack (Incl. 6,7)

Ref.	Part No.	Qty.	Description
13	5131658	1	Washer
14	7547019	1	Nut
15	1321935	1	Asm., Rack Insert (Incl. 19,20,21)
16	7710506	1	Circlip
17	7710508	1	Ring, Retaining
18	7556165	1	Washer, Spring
19	5132553	1	Insert, Pressure Plate
20	3514356	1	Bearing, Ball
21	7670128	1	Circlip, Internal
22	6230196	1	Rack, Clutch
23	7051528	1	Plug
24	7517449	1	Screw, Set

FUEL SYSTEM

STANDARD CRUISER V01CB15CC and STANDARD CRUISER V01CB15CG and STANDARD CRUISER V01CB15CJ and STANDARD CRUISER V01CB15DA and STANDARD CRUISER V01CB15DC and STANDARD CRUISER V01CB15DG and STANDARD CRUISER V01CB15DJ and STANDARD CRUISER V01CB15LC and STANDARD CRUISER V01CB15LG and STANDARD CRUISER V01CB15LJ and STANDARD CRUISER V01CB15UC and STANDARD CRUISER V01CB15UG and STANDARD CRUISER V01CB15UJ



FUEL SYSTEM

STANDARD CRUISER V01CB15CC and STANDARD CRUISER V01CB15CG and STANDARD CRUISER V01CB15CJ and STANDARD CRUISER V01CB15DA and STANDARD CRUISER V01CB15DC and STANDARD CRUISER V01CB15DG and STANDARD CRUISER V01CB15DJ and STANDARD CRUISER V01CB15LC and STANDARD CRUISER V01CB15LG and STANDARD CRUISER V01CB15LJ and STANDARD CRUISER V01CB15UC and STANDARD CRUISER V01CB15UG and STANDARD CRUISER V01CB15UJ

Part numbers may have changed since this microfiche was issued. To ensure that correct parts are received, refer to the Electronic Catalog, which is updated monthly.

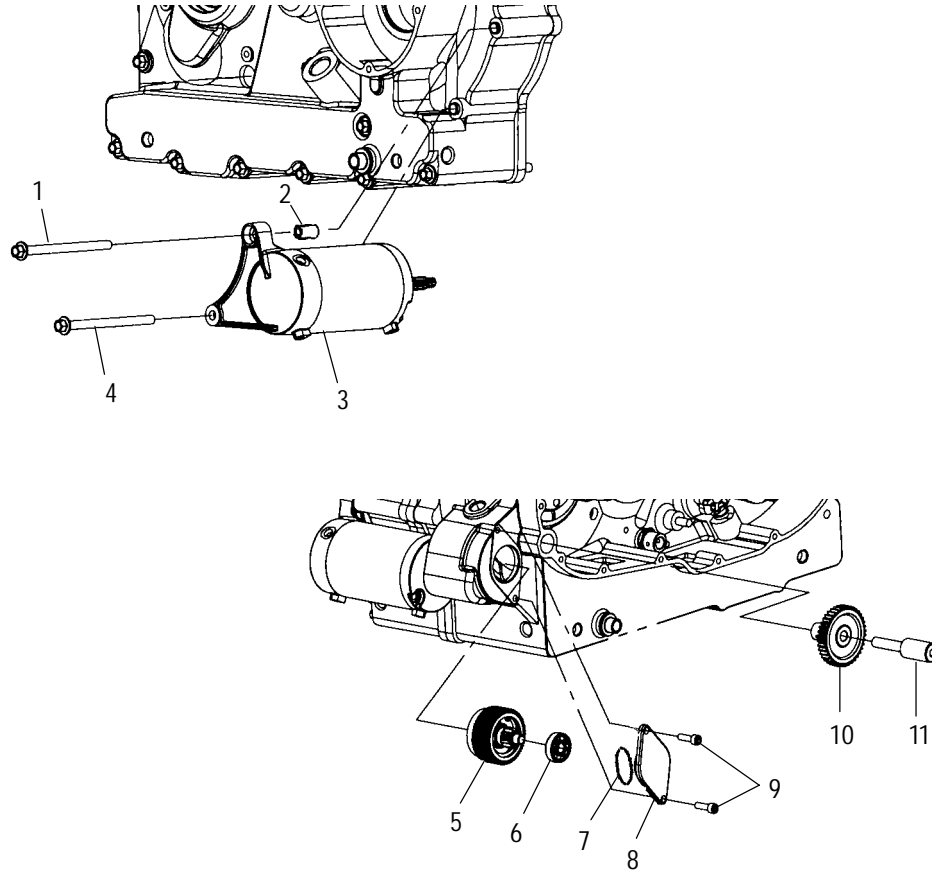
Ref.	Part No.	Qty.	Description
1	7556123	6	Washer, Flat
2	7517723	4	Screw, Socket Head
3	5132333	1	Cap, Fuel
4	1013342A2	1	Tank, Fuel, Black w/Gold Pin
	1013342A6	1	Tank, Fuel, Black/Steel Gray
	1013342A9	1	Tank, Fuel, Navy Blue/Cashmere
	1013342-265	1	Tank, Fuel, Andares Red
5	5411796	2	Pad, Tank Mount, Rear
6	5830193	1	Gasket, Fuel Sender
7	4010277	1	Sender, Fuel Level
8	7517725	5	Screw
9	5433958	1	Line, Vent
10	5411984	1	Elbow, Vent Line
11	5411972	1	Elbow, Vent Line
12	5433950	1	Line, Vent
13	5811878	2	Grommet, Rubber, Front
14	1253328	1	Asm., Throttle Body
15	7080894	6	Clamp, Hose
16	5411803	1	Hose, Manifold/Filter
17	2530031	2	Filter, Pre
18	7080795	2	Clamp, Hose

Ref.	Part No.	Qty.	Description
19	5411799	1	Hose, Tank, RH
20	7080790	2	Clamp, Double Band Hose
21	2520131	1	Disc-Quick, Fuel Feed, Male, Tee
	1500199	1	O-Ring
22	5411914	1	Hose, Tank, LH
23	2520136	1	Disc-Quick, Fuel Pump, Female
24	7080895	2	Clamp, Hose
25	5411801	1	Hose, Quick Disc/Pump
26	7547120	2	Nut
27	5211889-067	1	Bracket, Fuel Pump, Top
28	2520128	1	Pump, Fuel
29	7547119	1	Nut
30	7547118	1	Nut
31	5411802	1	Hose, Filter/Pump
32	5411762	1	Hose, Fuel, Rail/Tank Return
33	5131507	1	Disc-Quick, Fuel Line, Male
	1500199	1	O-Ring
34	5131506	1	Disc-Quick, Fuel Tank, Female
35	2530028	1	Filter, Fuel, High Pressure
36	7517405	3	Screw
37	2520132	1	Asm., Fuel Rail

8/00

STARTER MOTOR

STANDARD CRUISER V01CB15CC and STANDARD CRUISER V01CB15CG and STANDARD CRUISER V01CB15CJ and STANDARD CRUISER V01CB15DA and STANDARD CRUISER V01CB15DC and STANDARD CRUISER V01CB15DG and STANDARD CRUISER V01CB15DJ and STANDARD CRUISER V01CB15LC and STANDARD CRUISER V01CB15LG and STANDARD CRUISER V01CB15LJ and STANDARD CRUISER V01CB15UC and STANDARD CRUISER V01CB15UG and STANDARD CRUISER V01CB15UJ



Part numbers may have changed since this microfiche was issued. To ensure that correct parts are received, refer to the Electronic Catalog, which is updated monthly.

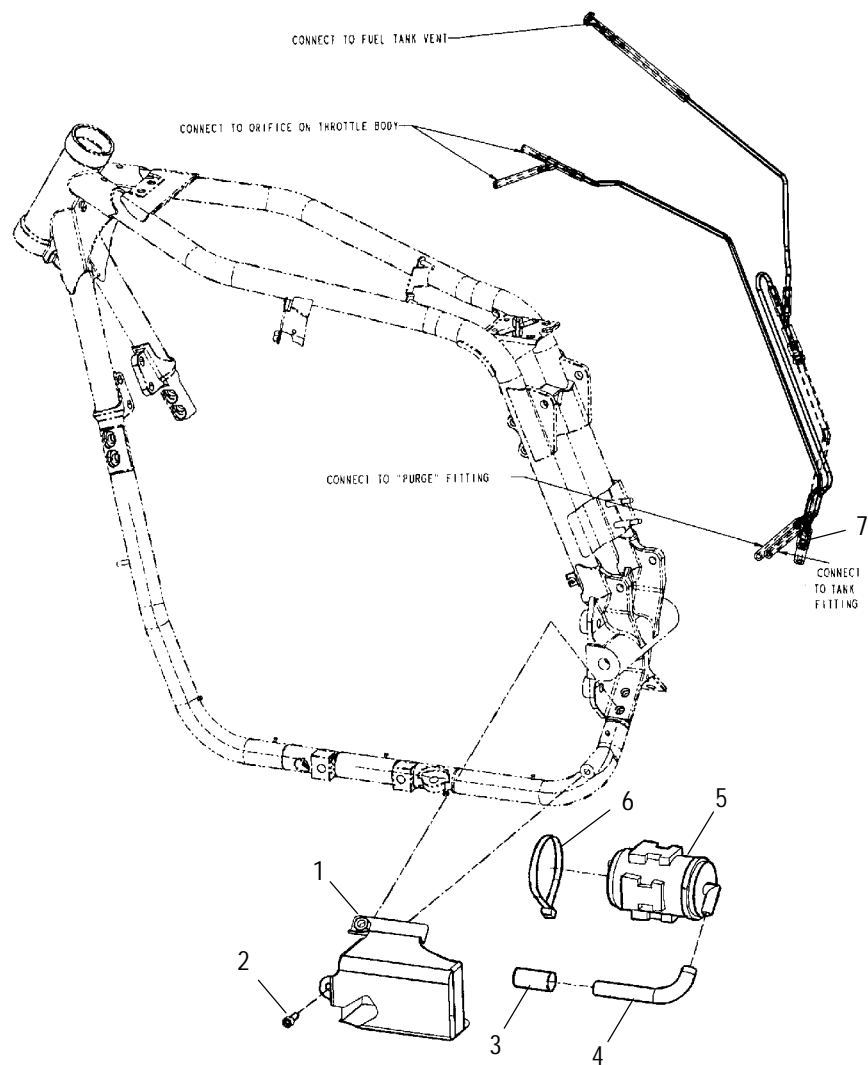
Ref.	Part No.	Qty.	Description
1	7517409	1	Screw
2	7663005	2	Dowel
3	4060155	1	Starter
4	7517719	1	Screw
5	3230544	1	Clutch, Torque Limiting
6	3513518	1	Bearing, Ball

Ref.	Part No.	Qty.	Description
7	5411278	1	O-Ring
8	5132276	1	Cap, Bearing
9	7517384	2	Screw
10	6230128	1	Gear, Idler
11	5020905	1	Shaft, Idler, Mounting

6/00

EVAP SYSTEM

STANDARD CRUISER V01CS15LC and STANDARD CRUISER V01CS15LG and STANDARD CRUISER V01CS15LJ



Part numbers may have changed since this microfiche was issued. To ensure that correct parts are received, refer to the Electronic Catalog, which is updated monthly.

Ref.	Part No.	Qty.	Description
1	1013188	1	Bracket
2	7517410	1	Screw
3	7080932	1	Filter, Vent Line
4	5411870	1	Hose, Vent

Ref.	Part No.	Qty.	Description
5	2520192	1	Filter, Activated Charcoal
6	7080924	1	Cable Tie
7	2520225	1	Hose



PRINTED IN THE USA

PARTS MANUAL PN 9916612 and MICROFICHE PN 9916613 8/00