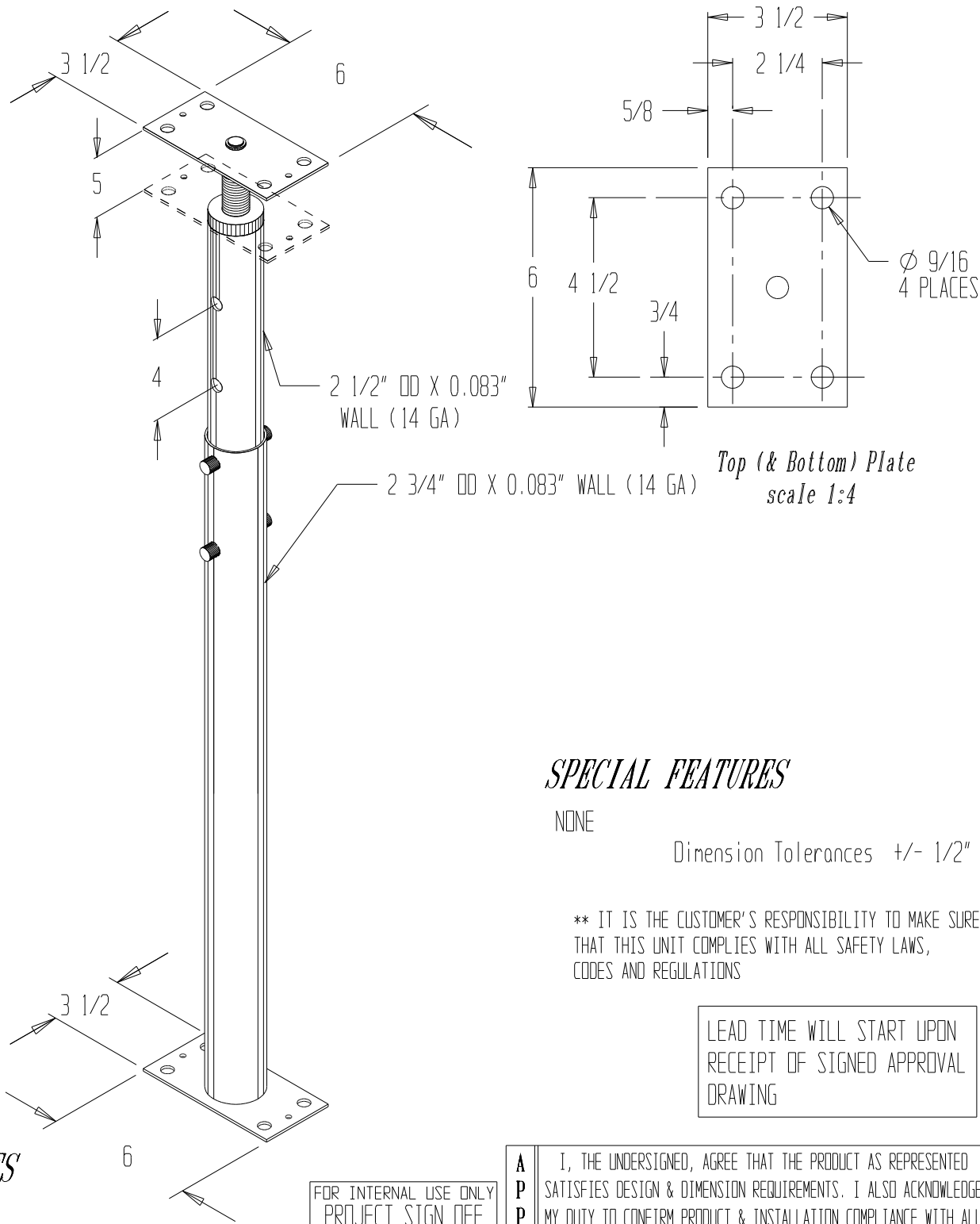


**SPECIAL UNITS ARE NON-RETURNABLE
*AVAILABLE AT ADDITIONAL COSTS

BASEMENT FLOOR JACK, FJB-100



SPECIAL FEATURES

NONE
Dimension Tolerances +/- 1/2"

** IT IS THE CUSTOMER'S RESPONSIBILITY TO MAKE SURE THAT THIS UNIT COMPLIES WITH ALL SAFETY LAWS, CODES AND REGULATIONS

LEAD TIME WILL START UPON RECEIPT OF SIGNED APPROVAL DRAWING

STANDARD FEATURES

- MODEL NUMBER: FJB-100
- LOWERED HEIGHT: 54 INCHES
- LOWERED HEIGHT CAPACITY: 8,438 LBS
- RAISED HEIGHT: 100 INCHES
- RAISED HEIGHT CAPACITY: 5,600 LBS

- RED OXIDE FINISH
- ALL WELDED STEEL CONSTRUCTION
- TELESCOPIC DESIGN W/ REMOVABLE PINS
- END PAD INCLUDES SCREW & TURNING BAR FOR HEIGHT ADJUSTMENT

FOR INTERNAL USE ONLY PROJECT SIGN OFF	
SALES	
ENG	
FAB.	
POWER	

A P P R O V A L	I, THE UNDERSIGNED, AGREE THAT THE PRODUCT AS REPRESENTED SATISFIES DESIGN & DIMENSION REQUIREMENTS. I ALSO ACKNOWLEDGE MY DUTY TO CONFIRM PRODUCT & INSTALLATION COMPLIANCE WITH ALL APPLICABLE FEDERAL, STATE AND LOCAL REGULATIONS & STANDARDS.	
	ALL SPECIAL UNITS ARE NON-RETURNABLE	
	[] As drawn [] As marked	
	Signed: _____ Date: _____	
LEAD TIME WILL START UPON RECEIPT OF SIGNED APPROVAL DRAWING		

DISTRIBUTOR'S NAME: VESTIL MFG		P.O.#: _
		W.O.#: _
DRAWN BY: _	DATE: _	SALES: _
REFERENCE: _	SCALE: _	DRWG./FILE NAME: FJB-100
QUOTED LEADTIME: _	QUOTE #: _	