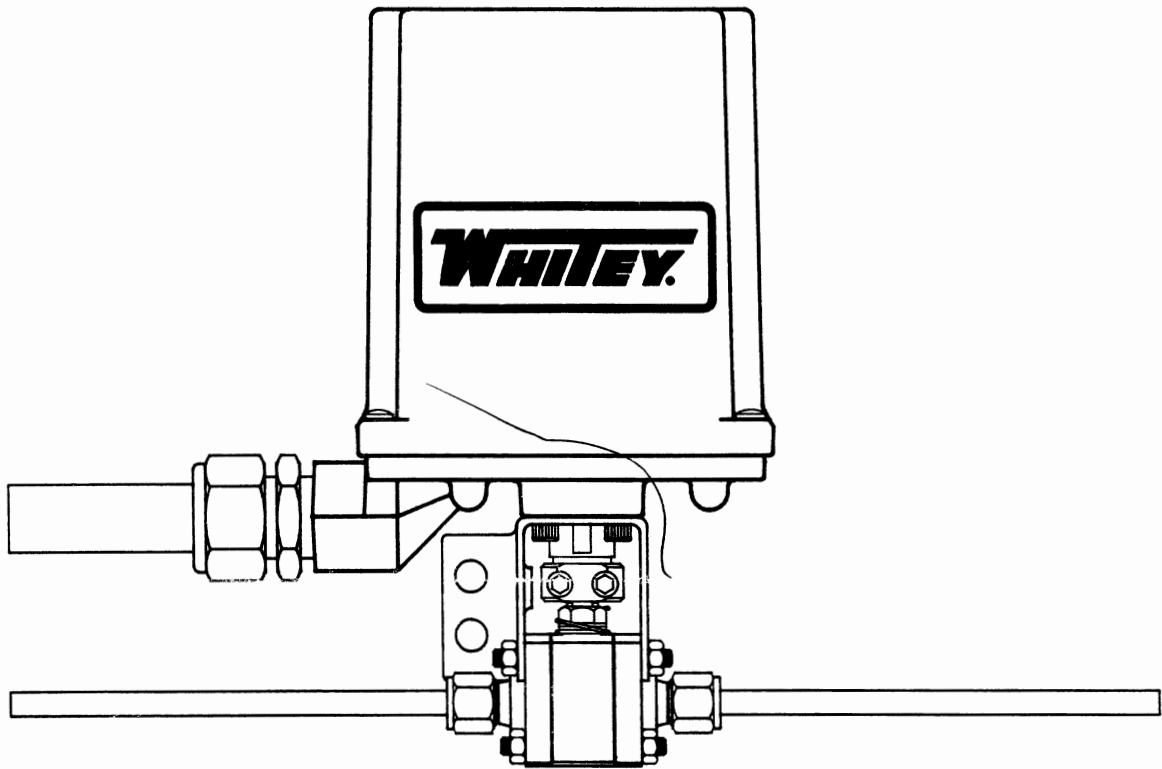


USER'S MANUAL

142 Series Type DC Electric Ball Valve Actuators



THIS MANUAL COVERS THE FOLLOWING MODEL:

MS-142DC

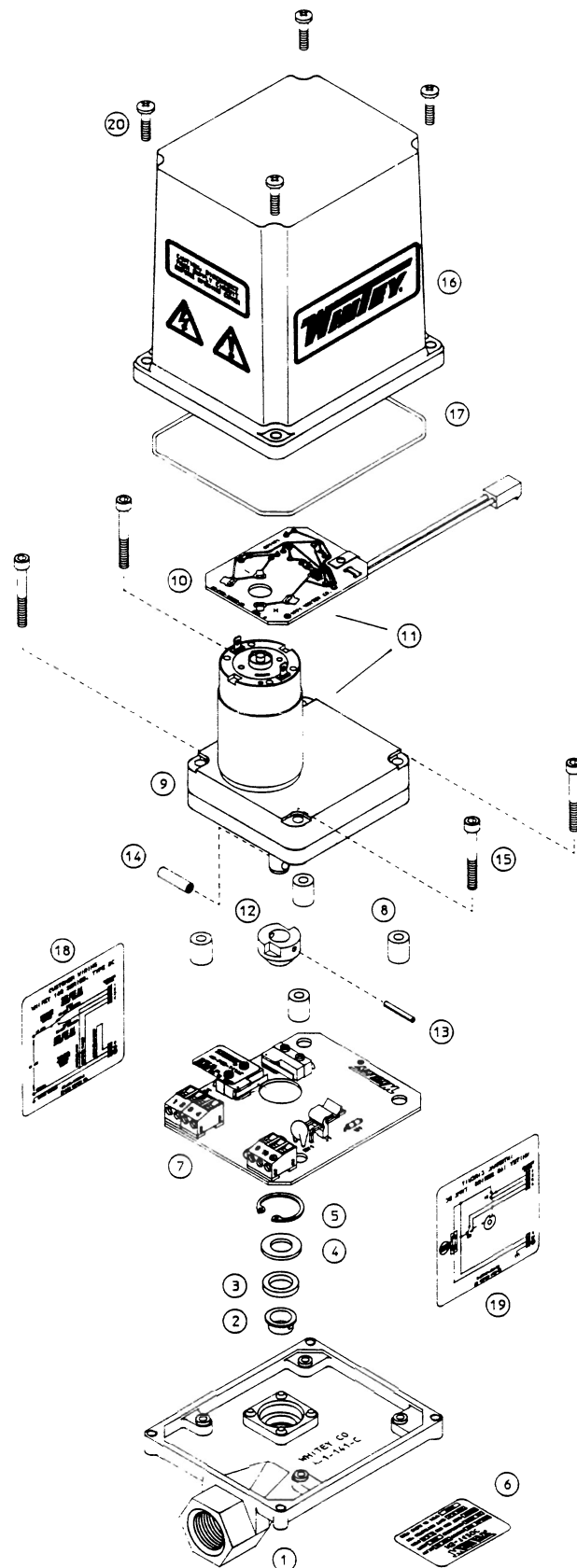
FOR USE ON 2-WAY AND 4-WAY BALL VALVES

NOTE: Please read this user's manual completely and carefully before installing or operating related Whitey electric ball valve actuators.

**WHITEY COMPANY
318 BISHOP ROAD
HIGHLAND HTS., OH 44143**

1 CONSTRUCTION INFORMATION

Exploded View of the 142 Series Type DC Actuator

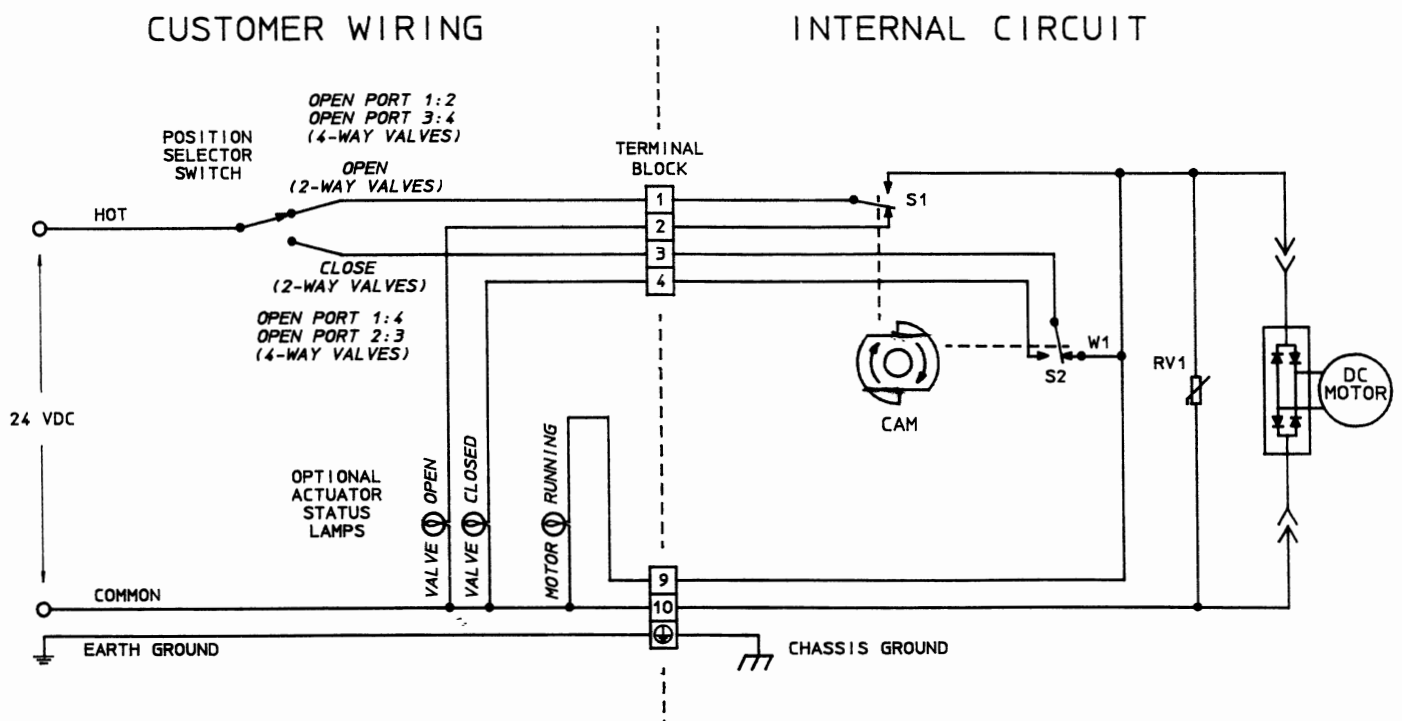


CONSTRUCTION INFORMATION 2

Parts List and Materials of Construction

ITEM	QTY	DESCRIPTION	MATERIAL
1	1	Base	Die Cast Aluminum
2	1	Bushing	Nylon
3	1	Shaft Seal	Buna-N
4	1	Washer	Stainless Steel
5	1	Retaining Ring	Steel
6	1	Specification Label	Polyester
7	1	Assembled PC Board	
8	4	Motor Standoffs	Nickel Plated Brass
9	1	DC Gearmotor	Stainless Steel Shaft
10	1	Assembled PC Board	
11	1	Gearmotor Assembly	Stainless Steel Shaft
12	1	Dual Cam	Nylon
13	1	Spring Pin	Stainless Steel
14	1	Roll Pin	Stainless Steel
15	4	Mounting Screws	Cadmium Plated Steel
16	1	Cover	Die Cast Aluminum
17	1	Cover Seal	Buna-N
18	1	Wiring Label	Polyester
19	1	Schematic Label	Polyester
20	4	Cover Screws	Stainless Steel
	1	User's Manual	

User Wiring and Internal Circuit

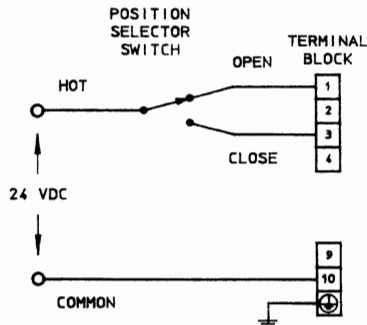


3 OPERATING CHARACTERISTICS

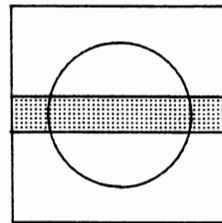
Valve Stem Position vs. Applied Control Signal

2-Way Ball Valves

CONTROL SIGNAL CONFIGURATION

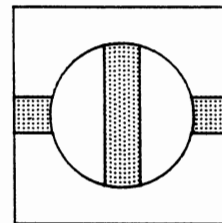
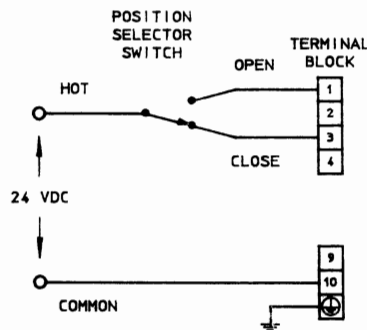
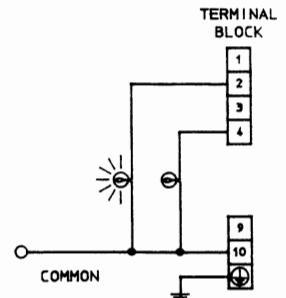


RESULTING VALVE STEM POSITION

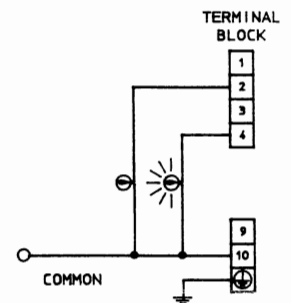


VALVE OPEN

RESULTING LAMP STATUS



VALVE CLOSED



4-Way Ball Valves

CONTROL SIGNAL CONFIGURATION

