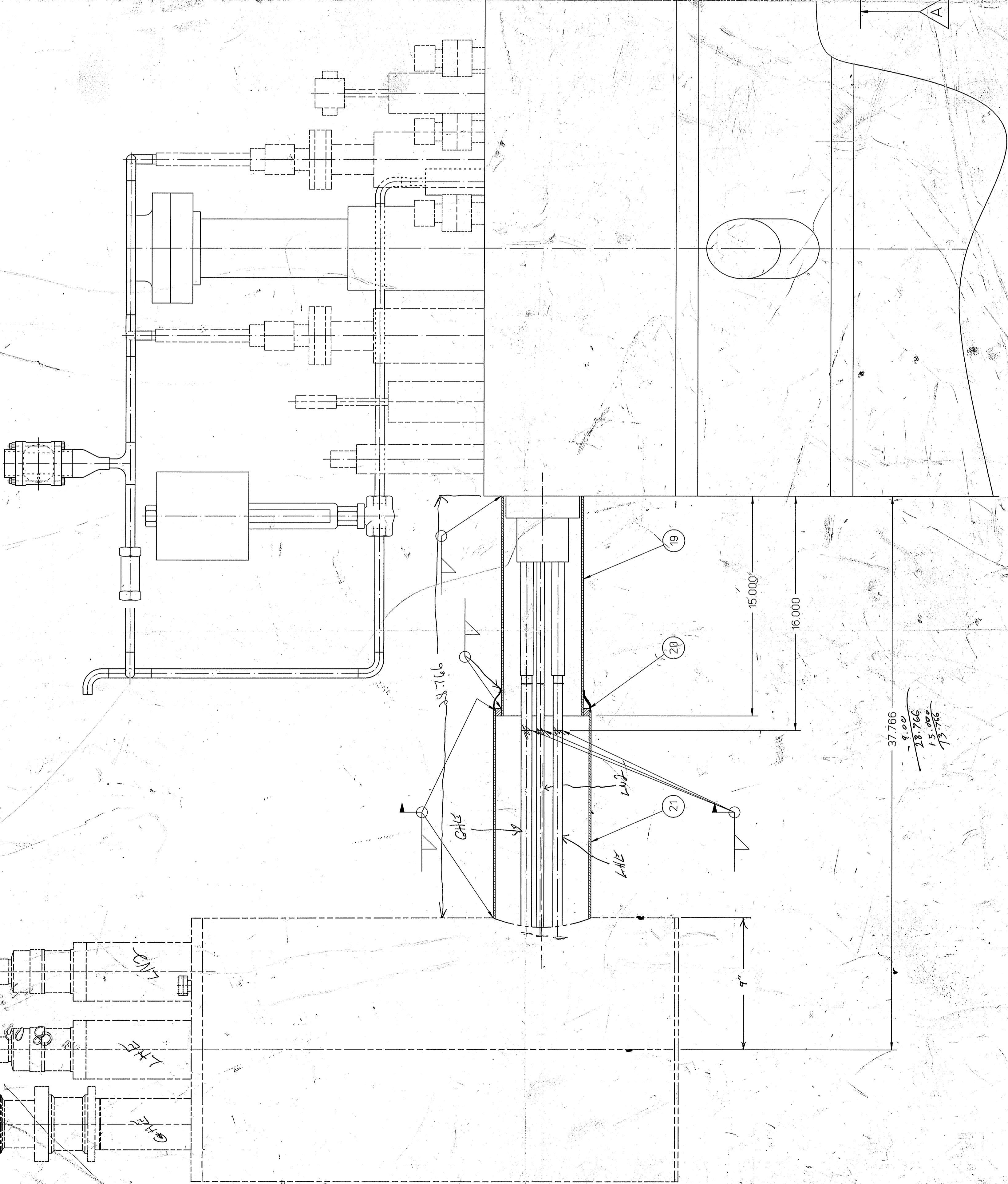


REVISIONS		DATE	APPROVED
ZONE	REV.		
ALL	A	9/13/94	J. MILLER

SEE SHEET 1 FOR ALL REVISIONS



DETAIL OF ITEM 20

QTY	ITEM NO.	PART OR IDENTIFYING NO.	UNLESS OTHERWISE SPECIFIED	NOTES
1	21		PIPE, 6 IPS SCH 10 X 15 IN LG.	
1	20		DISC, 6.293 OD X 5.627 ID X .50 IN THK	
1	19		PIPE, 5 IPS SCH 10 X 15 IN LG.	304 STN STL

PARTS LIST		APPROVALS		DATE
DRAWN	F. RANKINS	7/26/94		
CHECKED	J. MILLER	7/26/94		
APPROVED	D. F. KLOCK	8/22/94		
APPROVED	W. J. SCHNEIDER	8/22/94		

DIM & TOL PER ANSI Y14.5
 UNLESS OTHERWISE SPECIFIED
 TOLERANCES ARE IN INCHES
 FRACTIONS DECIMAL ANGLES
 #N/A .XXX #.015 #

MATERIAL
 SEE PARTS LIST
 FINISH
 N/A UNLESS OTHERWISE NOTED
 DEBUR & BREAK ALL SHARP EDGES
 DO NOT SCALE DRAWING

CADD ID NO.
 USG/MS/665/654/65420
 /18014.0000.012.0

THE CONTINUOUS ELECTRON BEAM ACCELERATOR FACILITY
 NEWPORT NEWS, VIRGINIA
 UNITED STATES DEPARTMENT OF ENERGY

HALL A SUPERCONDUCTING DIPOLE
 TEMPORARY BAYONET CAN

SIZE DWG. NO. 65420-D-18014-00
 REV. A
 SHEET 2 OF 2

37.766
 - 4.000
 28.766
 15.000
 13.766

Behm/C/GA