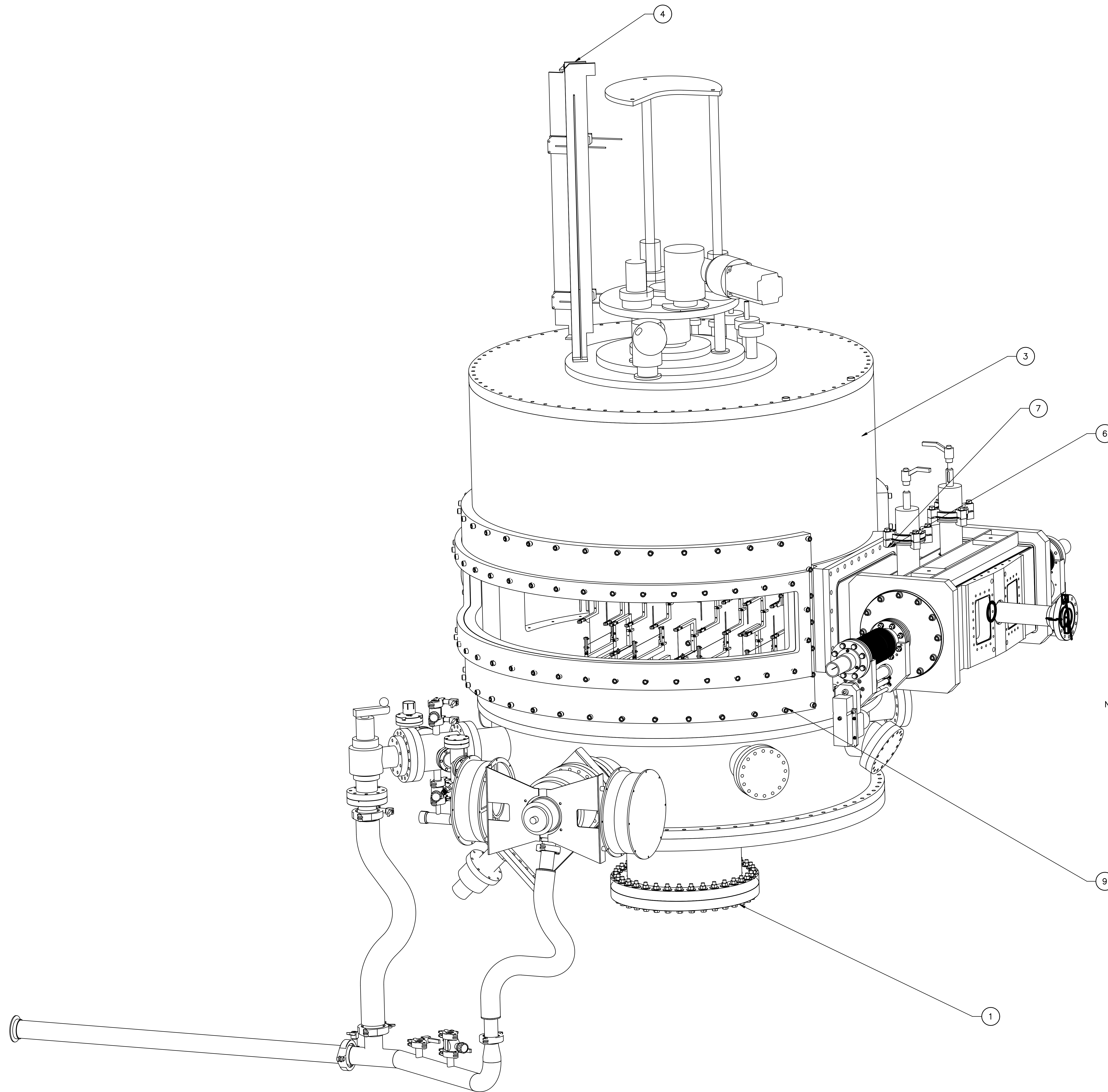


REVISION HISTORY		
ZONE	REV	DESCRIPTION



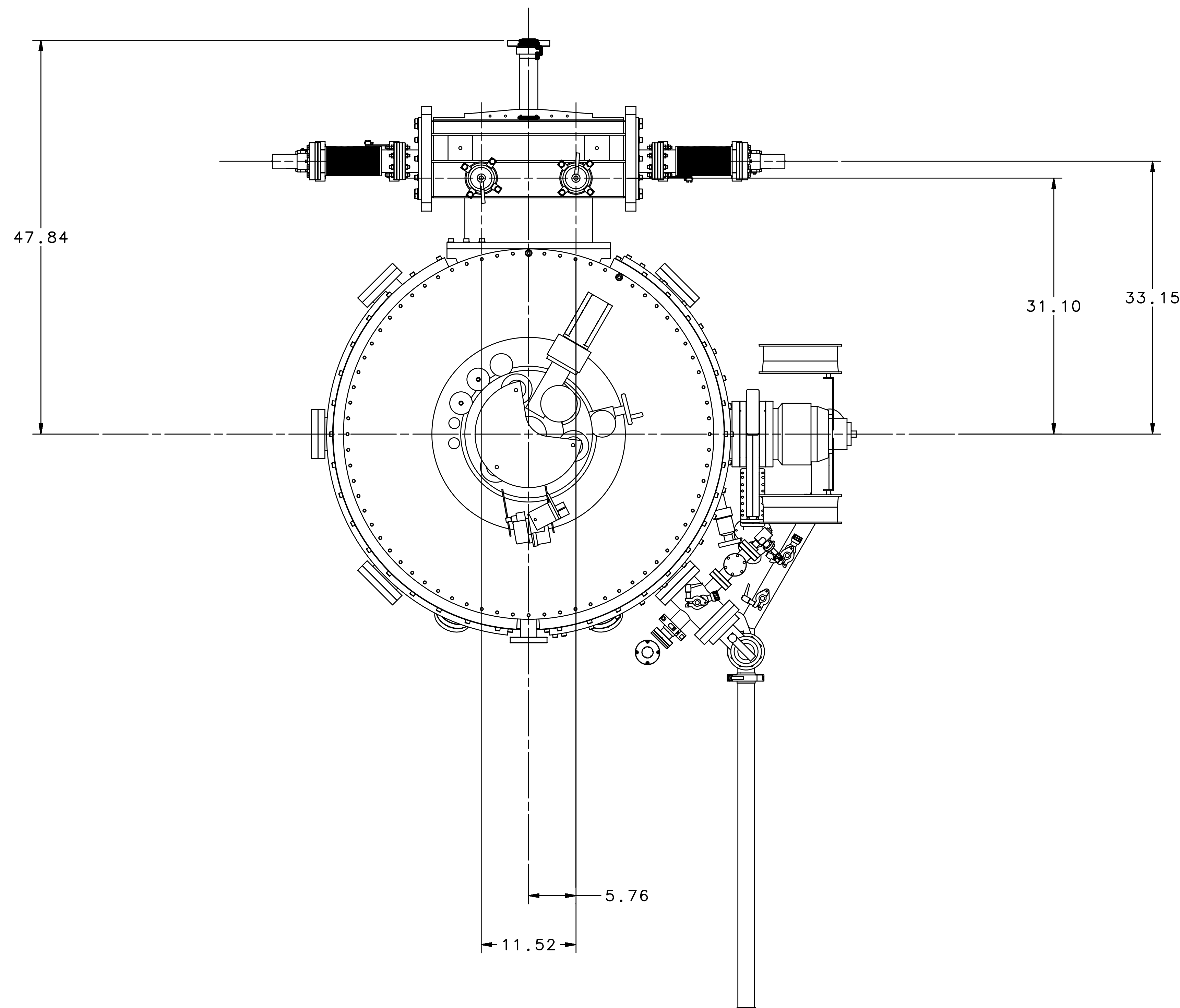
NOTES:

1. WEIGHT IS APPROXIMATELY 1295 LBS.
2. IN ACCORDANCE WITH THE JEFFERSON LAB ESH&Q MANUAL SUBJECT MATTER EXPERT (SME) SIGNATURES MAY BE REQUIRED.

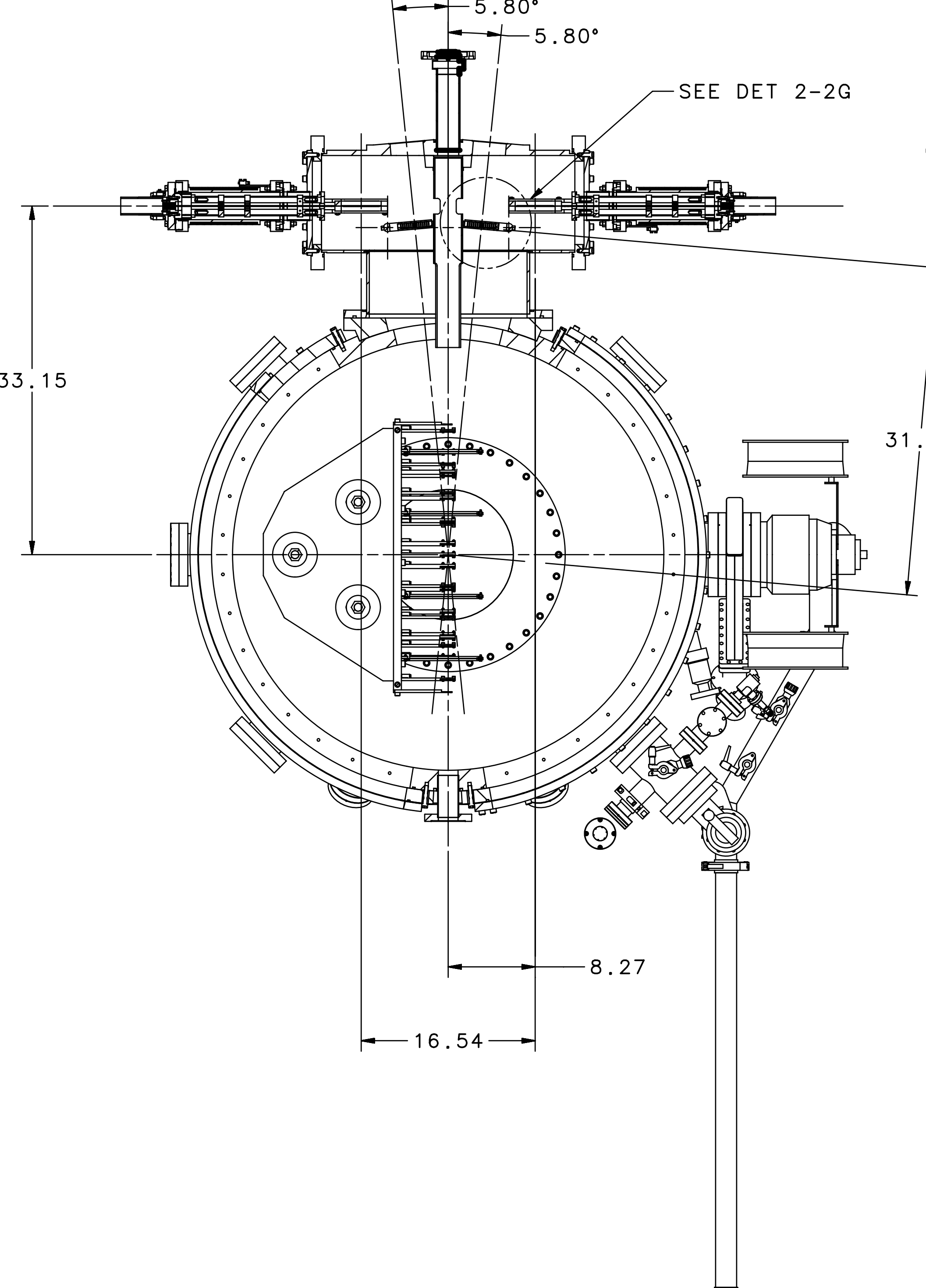
QTY	ITEM	PART OR IDENTIFYING NO.	NOMENCLATURE OR DESCRIPTION	MATERIAL SPECIFICATION	NOTES
88	9	FASTENAL 79069	SHCS 3/8-16 X 1.75	STAINLESS STEEL 316	
1	8	FASTENAL 77711	HEX NUT 5/16-18	STAINLESS STEEL 316	
4	7	FASTENAL 11567688	FLAT WASHER M10 X 20MM OD	STAINLESS STEEL A2-70	
4	6	FASTENAL 11567687	SHCS M10-1.50 X 40MM	STAINLESS STEEL A2-70	
1	5	FASTENAL 0144222	WASHER 5/16 FLAT OD.625 GR.18-8	18-8 STNLS STL	
1	4	A10009-03-03-0000	TARGET DRIVE ASSY APEX		
1	3	A10009-03-00-0400	SCATT CHMBR ASSY APEX		
1	2	A10009-03-00-0100	DWNSTR EXT APEX		
1	1	A06114-03-03-0400	BASE RING WELL VACUUM ASSY		

EACH SHEET OF MULTI-SHEET DRAWINGS SHALL ALWAYS HAVE THE SAME REVISION LEVEL.
 DIM & TOL PER ASME Y14.5 2009. UNLESS OTHERWISE SPECIFIED DIMENSIONS ARE IN INCHES.
 TOLERANCES ARE:
 FRACTIONS ± 1/8 DECIMAL ± .01 ANGLES ± .50°
 UNLESS OTHERWISE NOTED SURFACES DEBUR & BREAK ALL SHARP EDGES.
 FINISH: MACHINED 125 UNLESS OTHERWISE NOTED
 DO NOT SCALE DRAWING
 DRAWN: J. MILLER DATE: 05/01/18
 THIRD ANGLE PROJECTION
 SEE PARTS LIST
 UNITED STATES DEPARTMENT OF ENERGY
Jefferson Lab
 Thomas Jefferson National Accelerator Facility
 Newport News, Virginia
 HALL A - A10009 - APEX BEAMLINE - INSTALLATION TARGET AND SEPTUM ASSY APEX TARGET SYSTEM APEX
 SIZE: DWG. NO. A10009-03-00-0000
 SCALE: 1:1 (SEE DWG. NO. A10009-02-00-0700) SHEET 1 OF 2

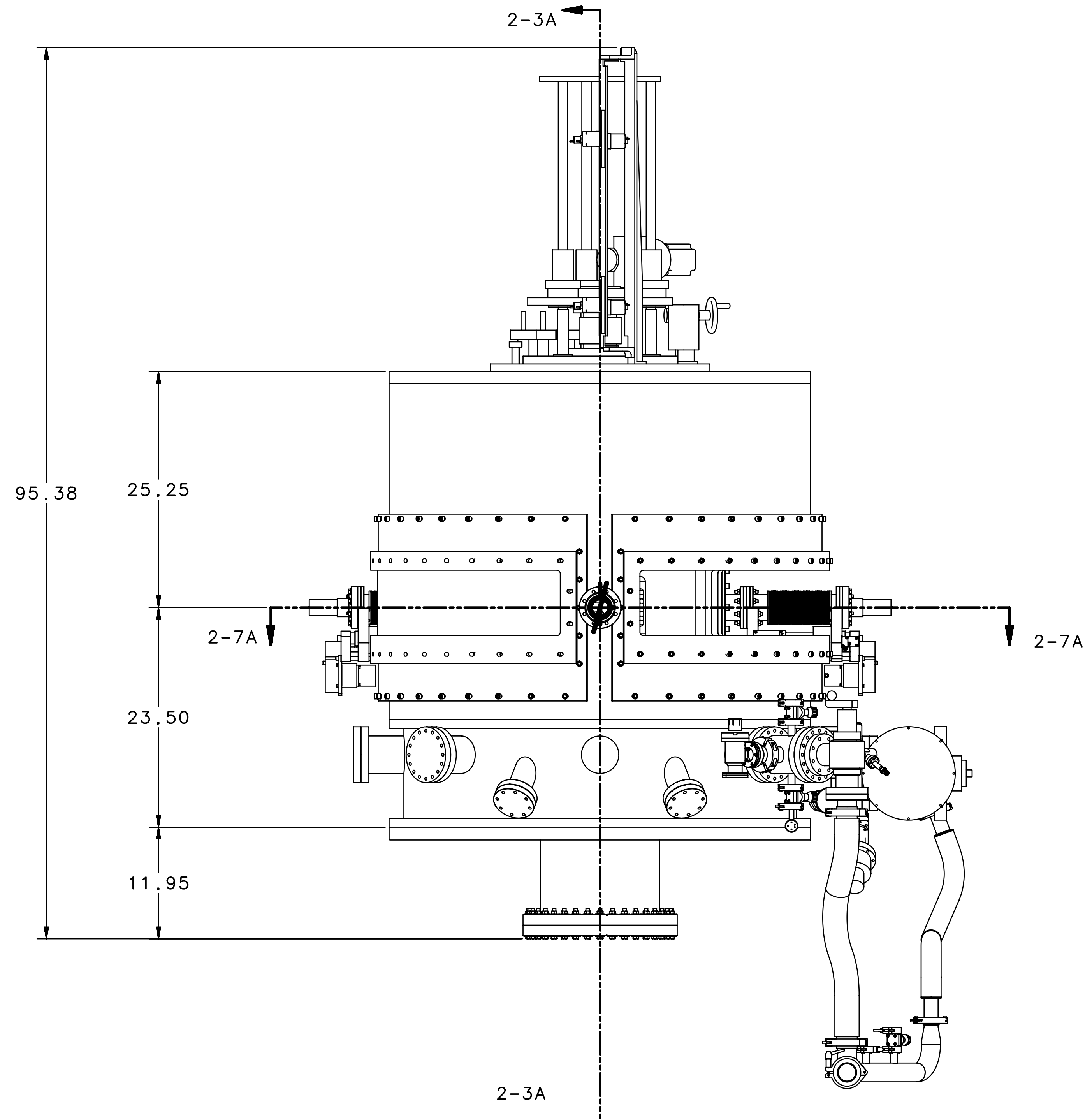
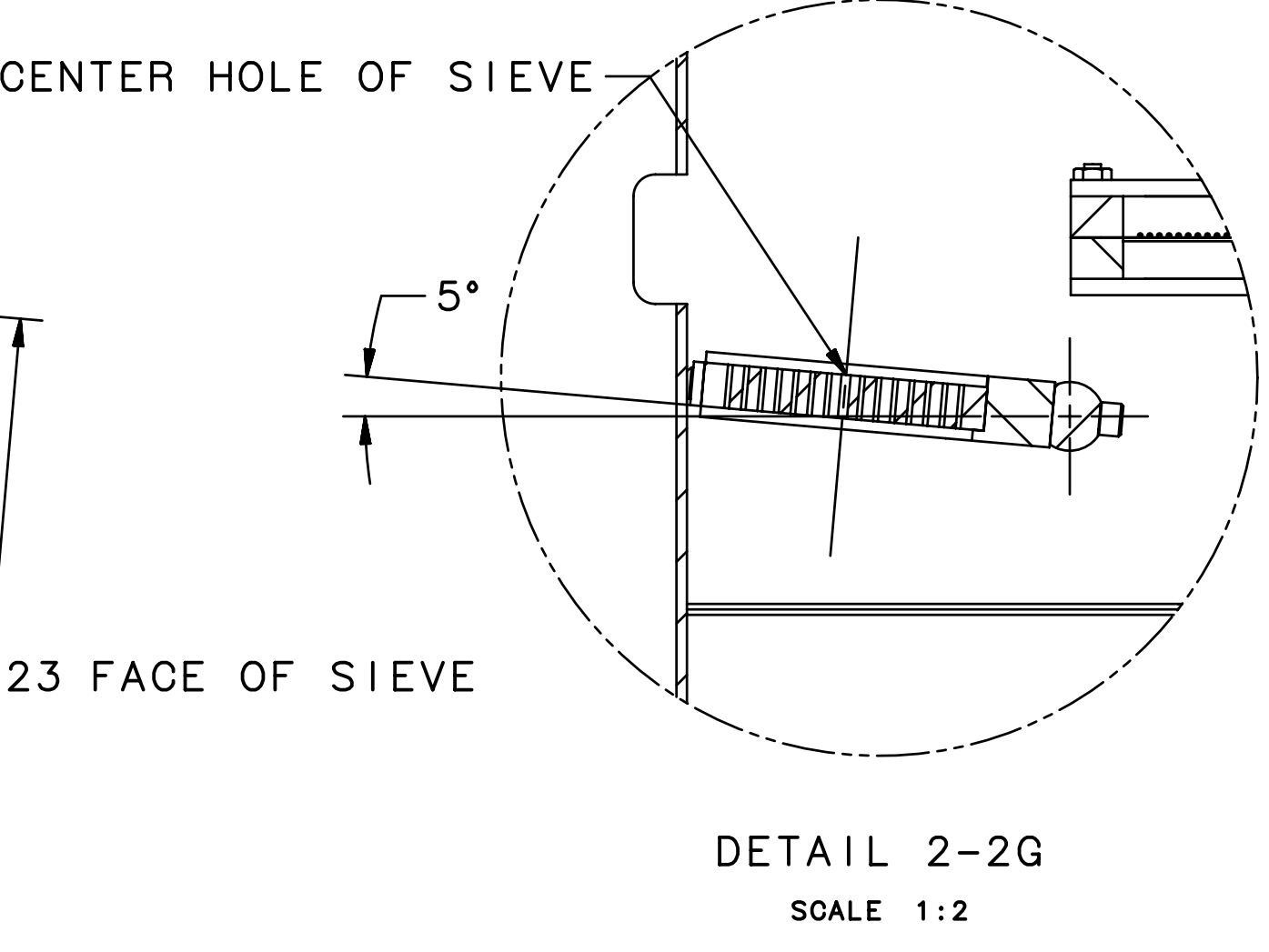
8 7 6 5 4 3 2 1



TOP VIEW 2-7E

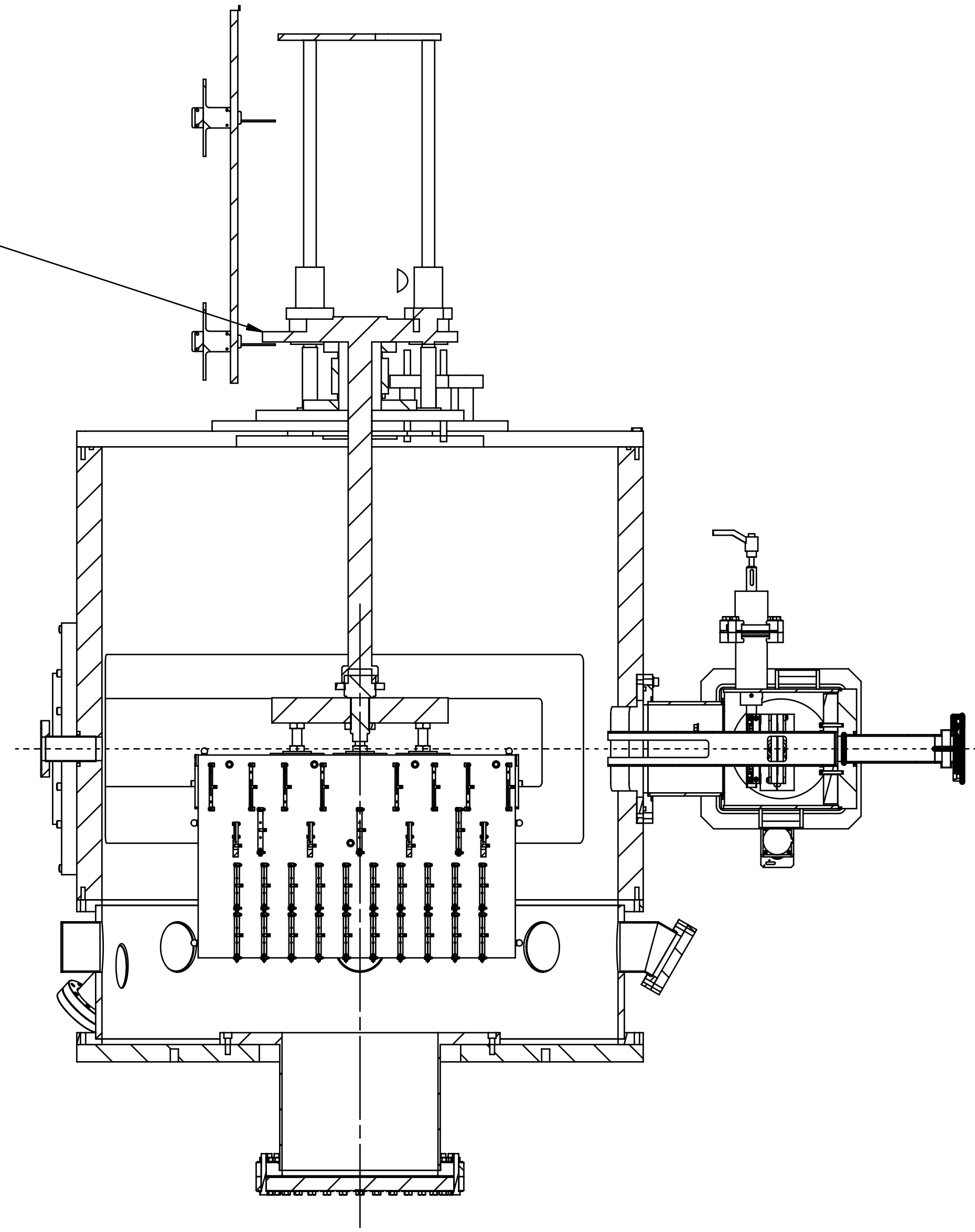


SECT VIEW 2-3E



FRONT VIEW 2-7A

TARGET SHOWN IN LOWEST POSITION



SECT VIEW 2-3A

8 7 6 5 4 3 2 1