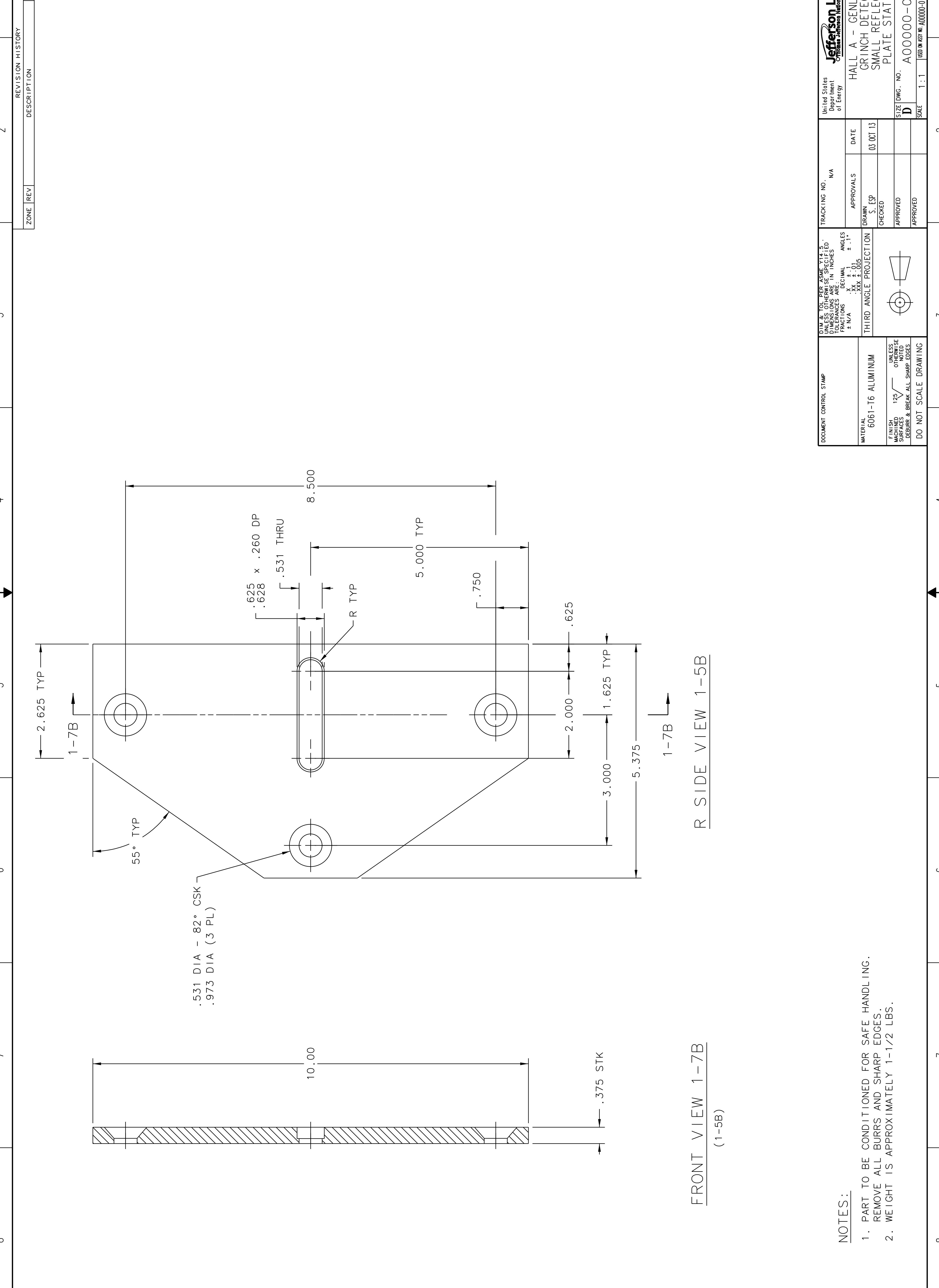


D C B A

ZONE	REV	DESCRIPTION	DATE	APPROVED
------	-----	-------------	------	----------

1 2 3 4 5 6 7 8



FRONT VIEW 1-7B  
(1-5B)

R SIDE VIEW 1-5B

NOTES:

- PART TO BE CONDITIONED FOR SAFE HANDLING. REMOVE ALL BURRS AND SHARP EDGES.
- WEIGHT IS APPROXIMATELY 1-1/2 LBS.

DOCUMENT CONTROL STAMP	UNIT TOLERANCES UNLESS OTHERWISE SPECIFIED. DIMENSIONS ARE IN INCHES. DECIMALS ± N/A. ANGLES ± .1°.	TRACKING NO. I/A	DATE	United States Department of Energy	Jefferson Lab Thomas Jefferson National Accelerator Facility	Newport News Virginia
MATERIAL 6061-T6 ALUMINUM	THIRD ANGLE PROJECTION	APPROVALS	03 OCT 13	APPROVED	HALL A - GENL EQUIPMENT	REV. -
FINISH 125 UNLESS OTHERWISE NOTED. SURFACES TO BE DEBURR & BREAK ALL SHARP EDGES.		DRAWN S. ESP		APPROVED	GRINCH DETECTOR ASSY	SIZE DWG. NO. A00000-01-01-2605
DO NOT SCALE DRAWING		CHECKED		APPROVED	SMALL REFLECTOR ASSY	SCALE 1:1
		APPROVED		APPROVED	PLATE STATIC SMALL	1 OF 1
						SHEET 1 OF 1

D C B A