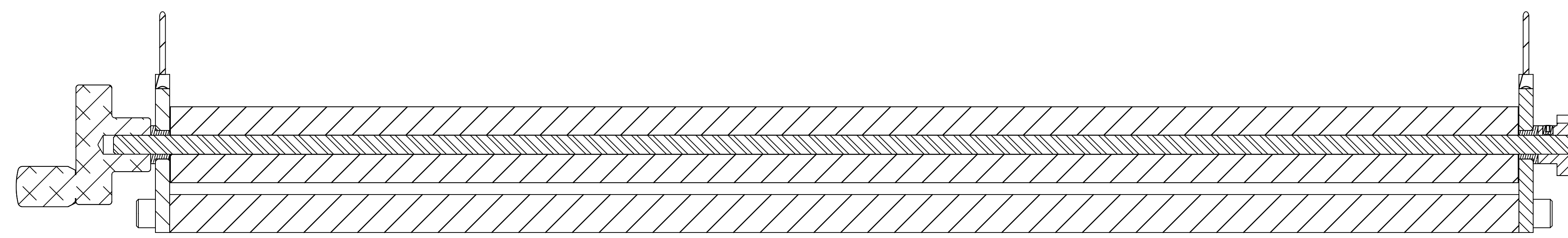
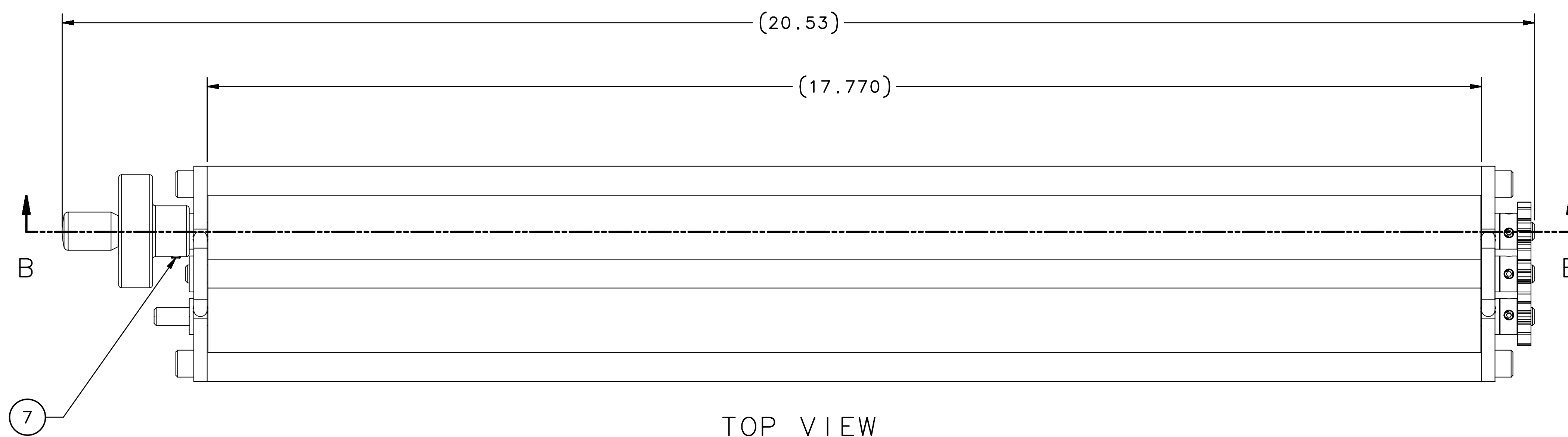


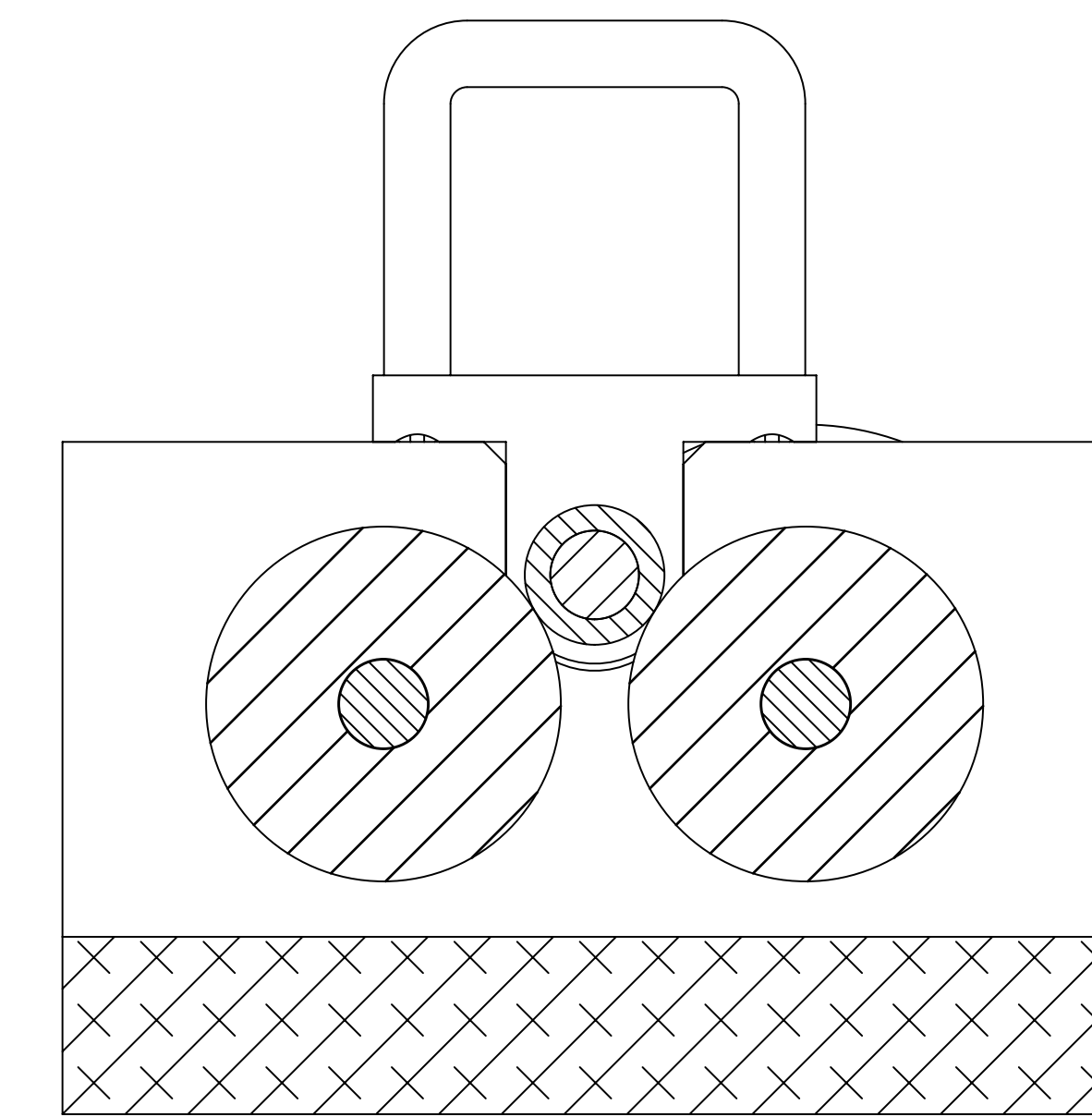
ISO VIEW



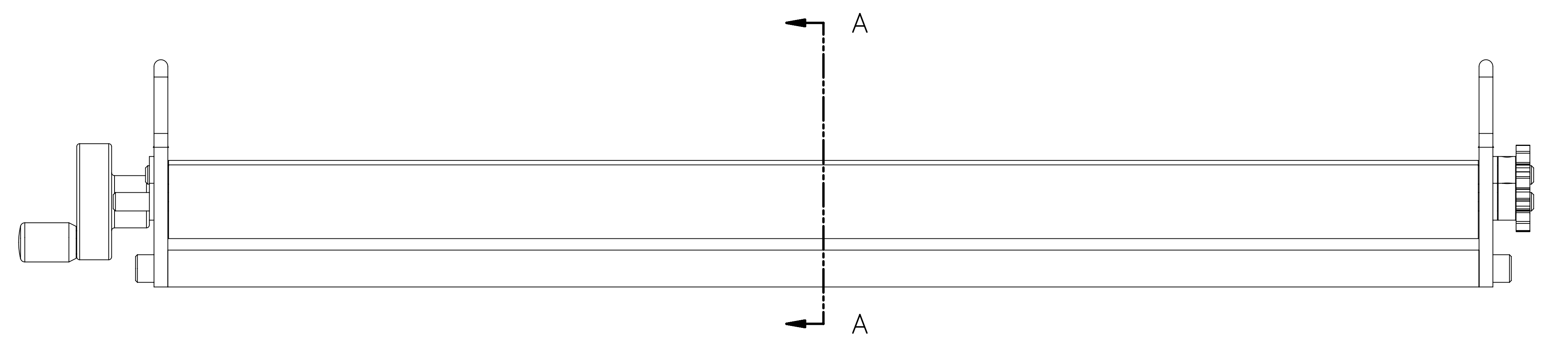
SECTION B-B



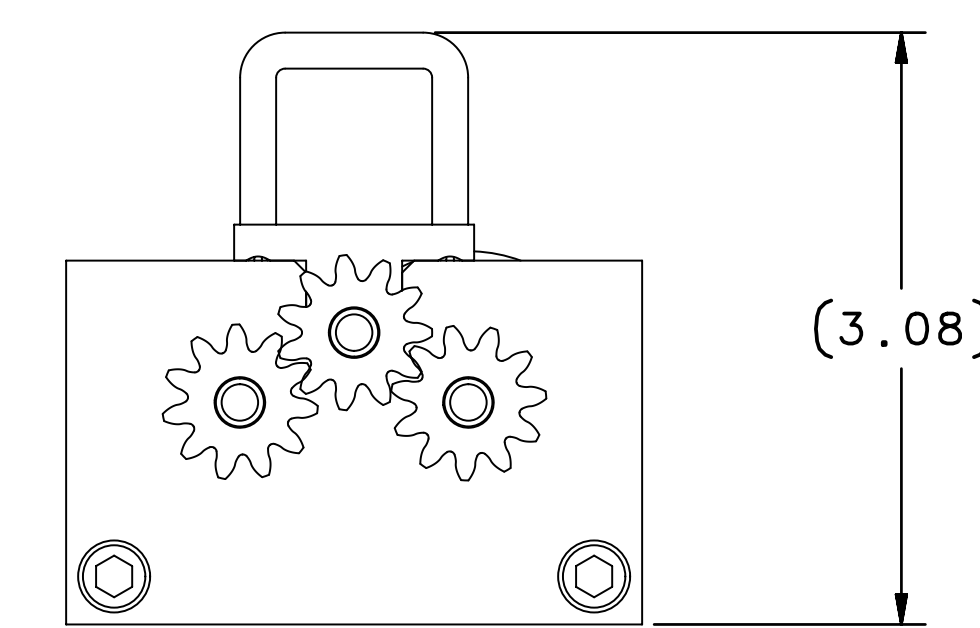
TOP VIEW



SECTION A-A  
SCALE 2:1



FRONT VIEW



RHS VIEW

NOTES:

- WEIGHT IS APPROXIMATELY 5.0 LBS.
- PART TO BE CONDITIONED FOR SAFE HANDLING. REMOVE ALL BURRS AND BREAK SHARP EDGES R.03" MAX UNLESS OTHERWISE SPECIFIED.
- IN ACCORDANCE WITH THE JEFFERSON LAB ESH&Q MANUAL SUBJECT MATTER EXPERT (SME) SIGNATURES MAY BE REQUIRED.

QTY	ITEM NO.	PART OR IDENTIFYING NO.	NOMENCLATURE OR DESCRIPTION	MATERIAL SPECIFICATION	NOTES
2	10	PIC 16T11A	SPUR GEAR 0.813 OD X 0.2498 BORE	ALUMINUM 2024-T3	
4	9	MCMASTER-CARR 7815K11	FLG SLEEVE BEARING .25 ID X .25 LG	BRONZE	
4	8	FASTENAL 79043	SHCS 1/4-20 X 0.75	STAINLESS STEEL 316	
1	7	FASTENAL 0177656	SOCKET SET SCREW #6-32 X 0.25 CUP PT	STAINLESS STEEL 316	
2	6	FASTENAL 0177654	SOCKET SET SCREW #6-32 X 0.125 CUP PT	STAINLESS STEEL 316	
1	5	A15006-07-01-0100	TEFLON/PTFE ROLLER ASSEMBLY		
1	4	A15006-07-01-0004	ROLLER FINGER WHEEL	ALUMINUM A5056	
2	3	A15006-07-01-0003	RUBBER ROLLER	POLYURETHANE RUBBER	
2	2	A15006-07-01-0002	ROLLER END PLATE	ALUMINUM 6061-T6	
1	1	A15006-07-01-0001	ROLLER BOTTOM PLATE	ALUMINUM 6061-T6	

EACH SHEET OF MULTI-SHEET DRAWINGS SHALL ALWAYS HAVE THE SAME REVISION LEVEL.

UNITED STATES DEPARTMENT OF ENERGY  
**Jefferson Lab**  
Thomas Jefferson National Accelerator Facility  
 Newport News, Virginia

HALL A - A15006 - TDIS FIXTURES TOOLING  
 MYLAR ROLLER ASSEMBLY

SEE PARTS LIST

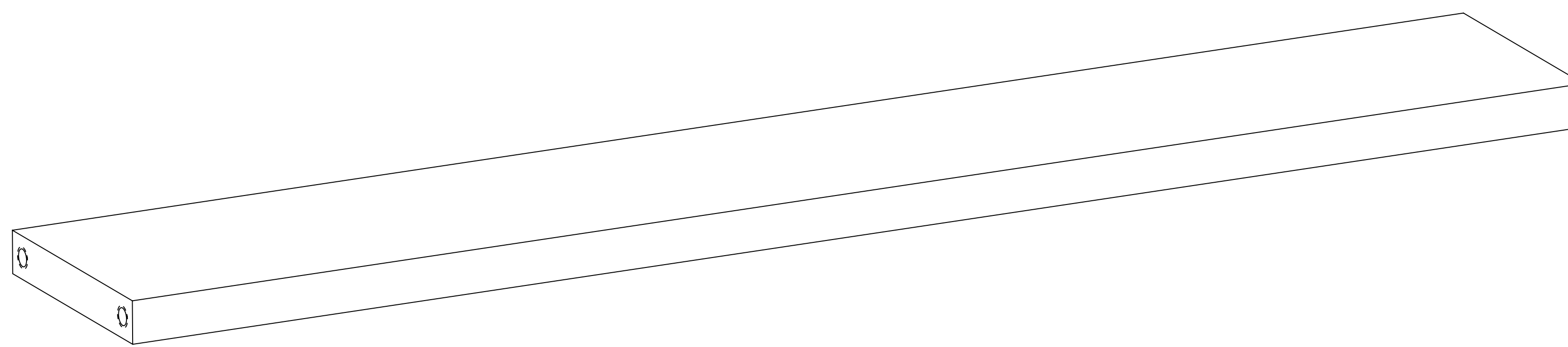
THIRD ANGLE PROJECTION

FINISH: MACHINED SURFACES UNLESS NOTED DEBURR & BREAK ALL SHARP EDGES

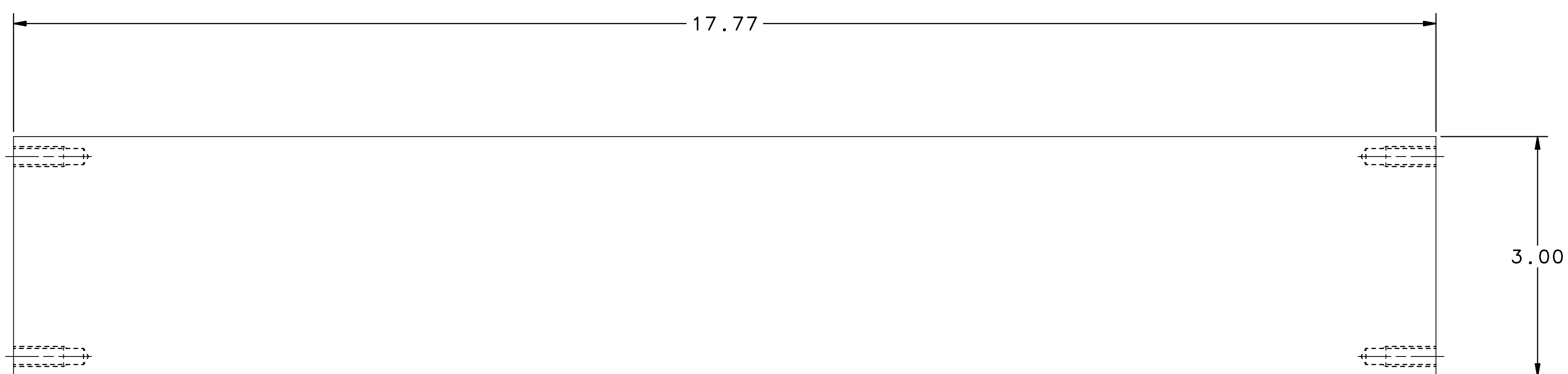
DO NOT SCALE DRAWING

DATE: 26 JUNE 19  
 SCALE: 1:1  
 SHEET: 1 OF 1

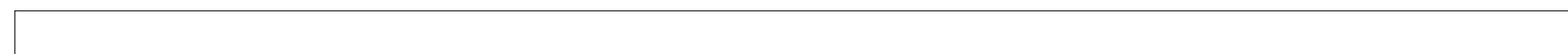
REVISION HISTORY		
ZONE	REV	DESCRIPTION



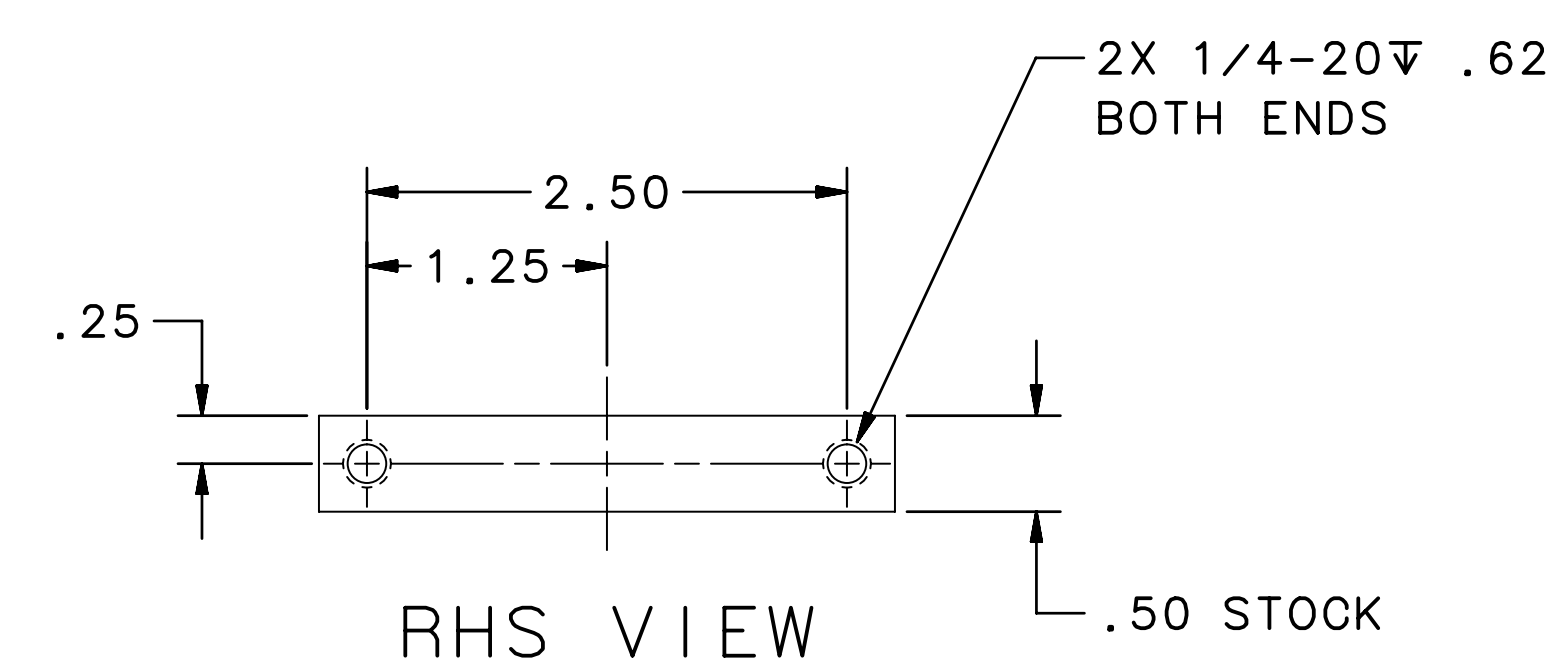
ISO VIEW



TOP VIEW



FRONT VIEW

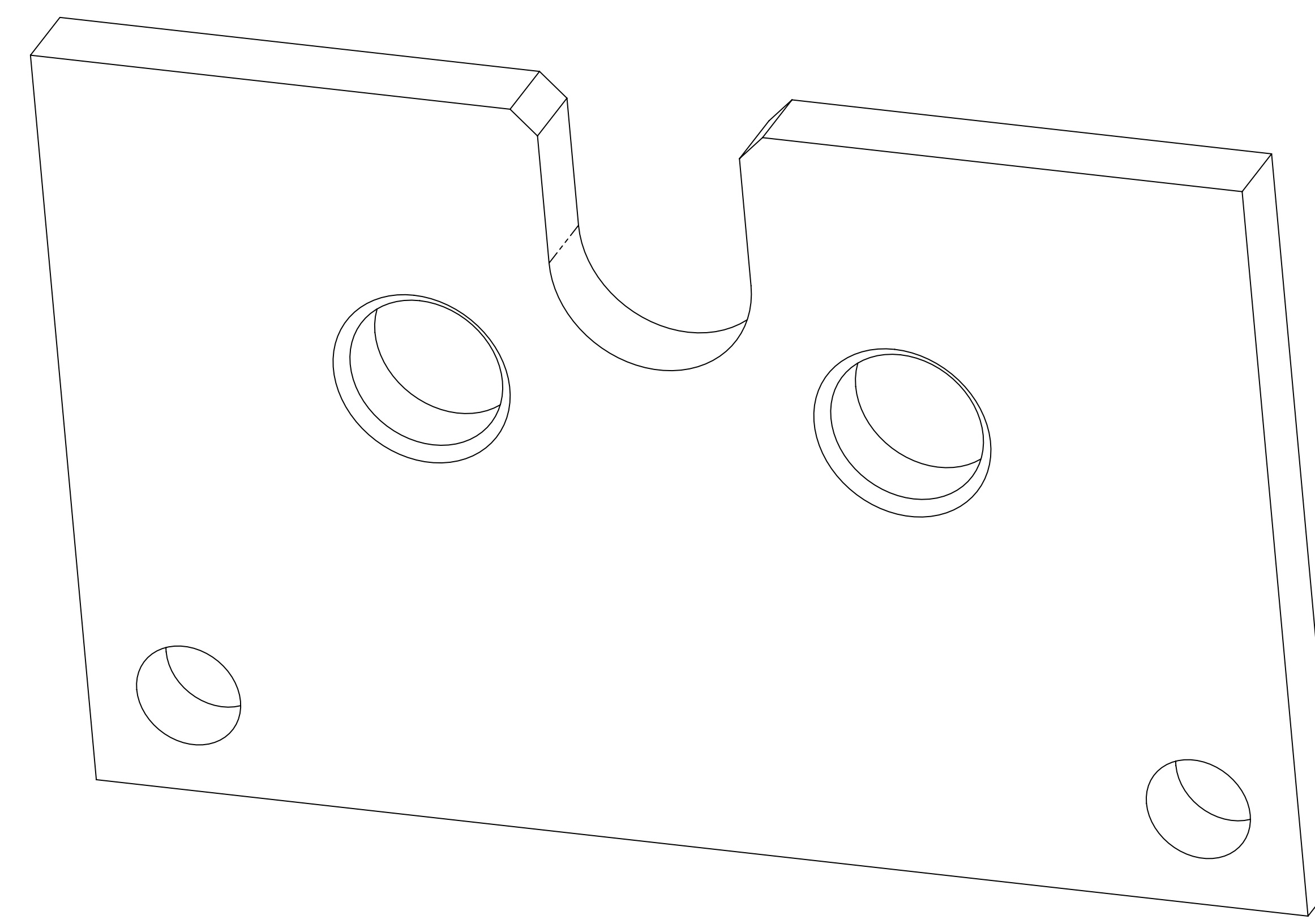


RHS VIEW

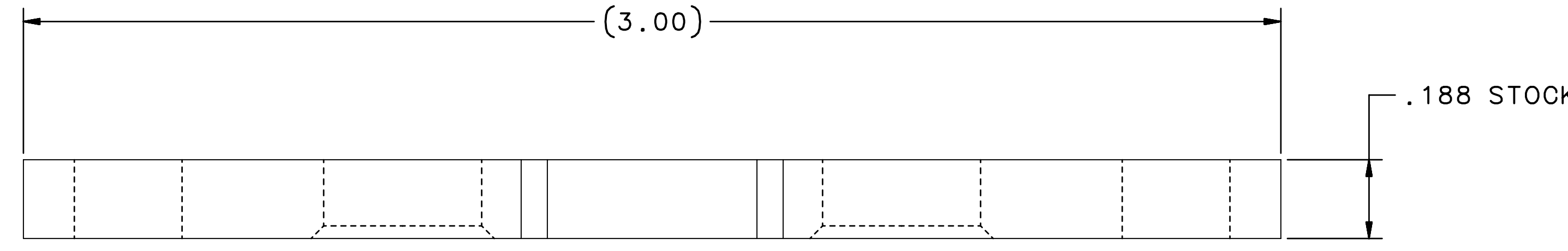
NOTES:

1. WEIGHT IS APPROXIMATELY 2.6 LBS.
2. PART TO BE CONDITIONED FOR SAFE HANDLING. REMOVE ALL BURRS AND BREAK SHARP EDGES R.03" MAX UNLESS OTHERWISE SPECIFIED.

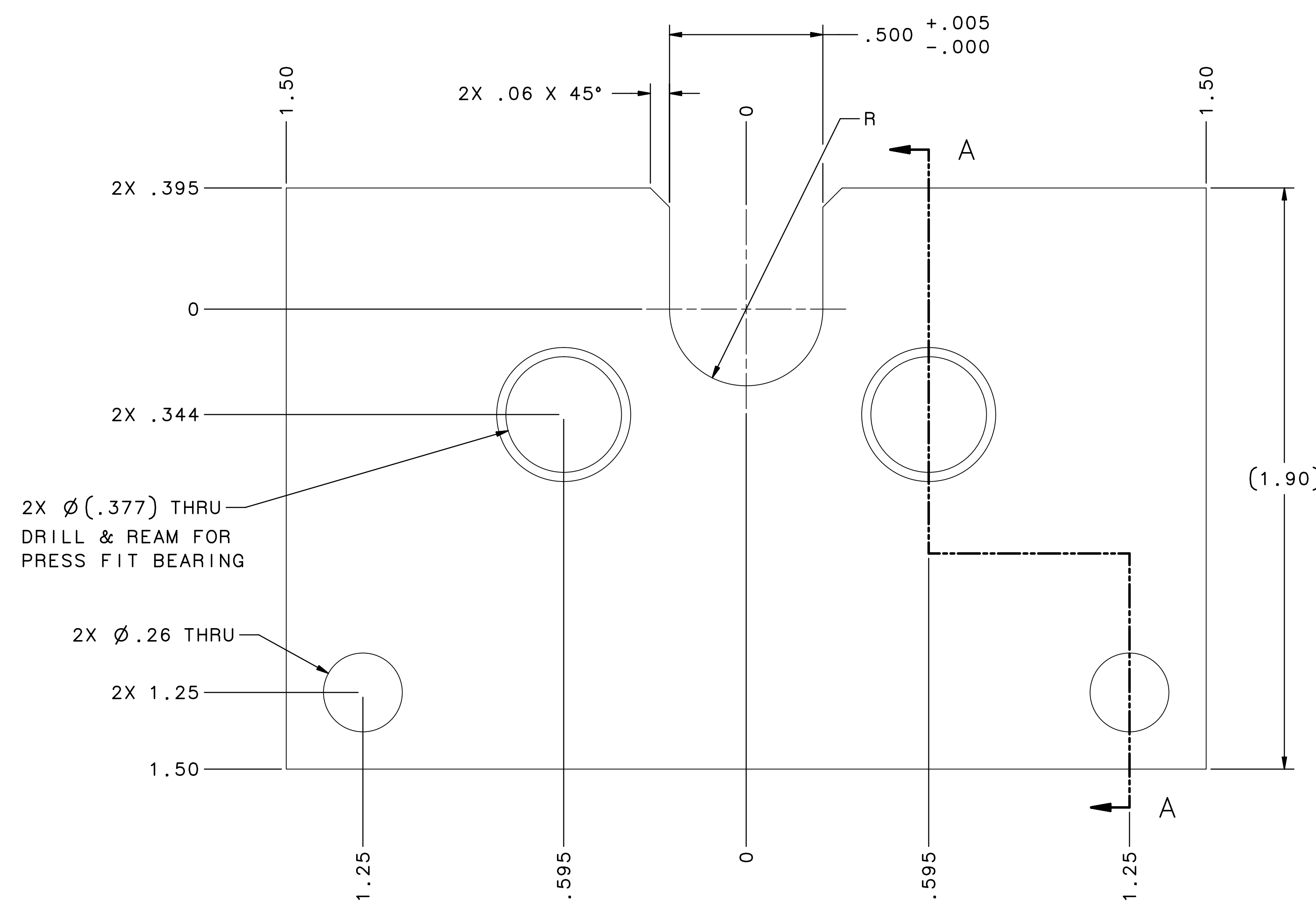
EACH SHEET OF MULTI-SHEET DRAWINGS SHALL ALWAYS HAVE THE SAME REVISION LEVEL.		United States Department of Energy		Jefferson Lab Thomas Jefferson National Accelerator Facility Newport News Virginia	
DIM & TOL PER ASME Y14.5 2009. UNLESS OTHERWISE SPECIFIED DIMENSIONS ARE IN INCHES. TOLERANCES ARE: FRACTIONS ± 1/16 DECIMAL ± .01 ANGLES ± .50°		MATERIAL ALUMINUM 6061-T6		HALL A - A15006 - TDIS FIXTURES - TOOLING MYLAR ROLLER ASSEMBLY ROLLER BOTTOM PLATE	
THIRD ANGLE PROJECTION		FINISH: MACHINED SURFACES DEBURR & BREAK ALL SHARP EDGES		UNLESS OTHERWISE NOTED	
DO NOT SCALE DRAWING		SCALE: 1:1		SIZE: DWG. NO. A15006-07-01-0001	
DRAWN: C. SOOVA		DATE: 27 JUNE 19		SHEET 1 OF 1	



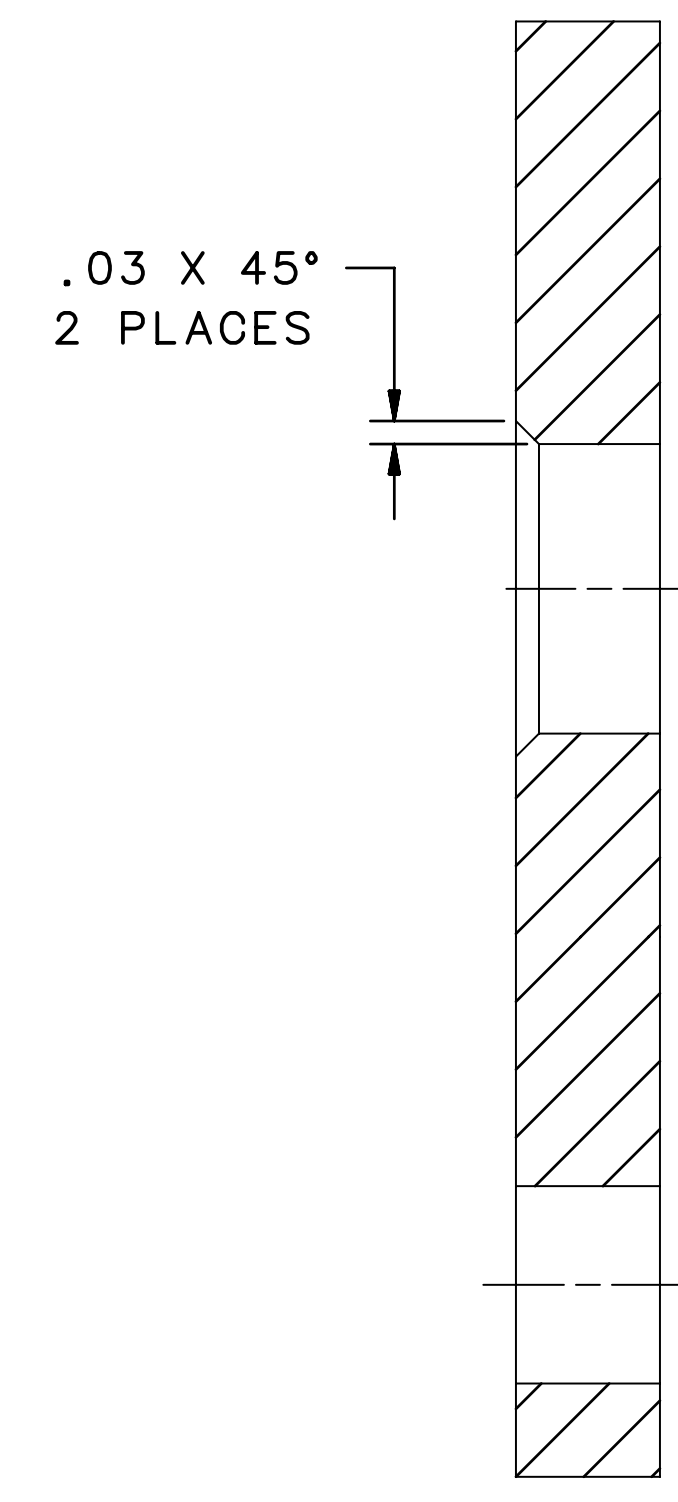
ISO VIEW



TOP VIEW



FRONT VIEW

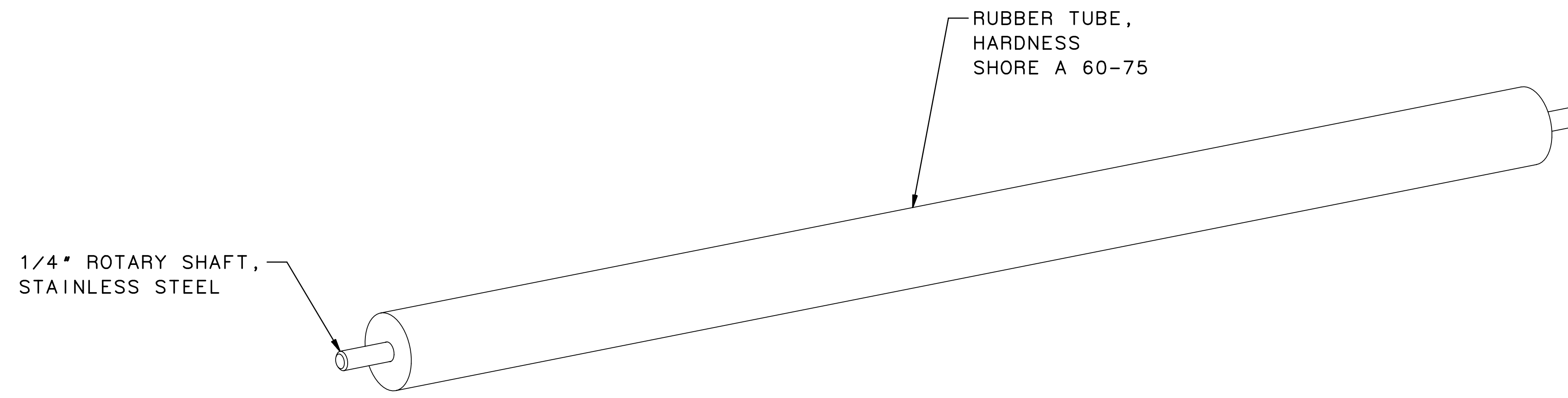


SECTION A-A

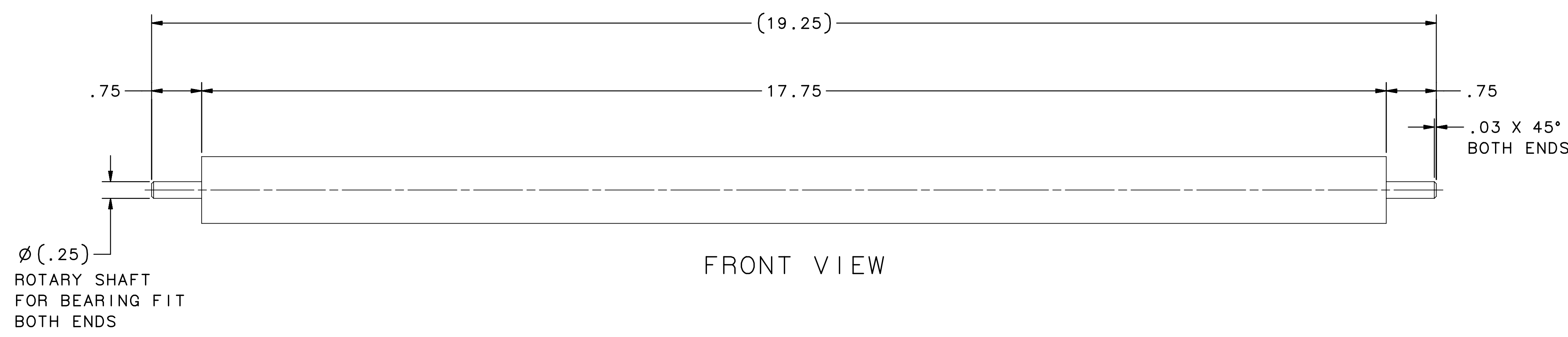
- NOTES:
1. WEIGHT IS APPROXIMATELY 0.1 LBS.
  2. PART TO BE CONDITIONED FOR SAFE HANDLING. REMOVE ALL BURRS AND BREAK SHARP EDGES R.03\* MAX UNLESS OTHERWISE SPECIFIED.

EACH SHEET OF MULTI-SHEET DRAWINGS SHALL ALWAYS HAVE THE SAME REVISION LEVEL.			
<small>DIM &amp; TOL PER ASME Y14.5 2009. UNLESS OTHERWISE SPECIFIED DIMENSIONS ARE IN INCHES. TOLERANCES ARE:</small> FRACTIONS: X ±.1 / X ±.05 DECIMAL: XX ±.01 / XXX ±.005 ANGLES: ±.50°	MATERIAL: ALUMINUM 6061-T6	United States Department of Energy <b>Jefferson Lab</b> <small>Thomas Jefferson National Accelerator Facility</small> Newport News Virginia	HALL A - A15006 - TDIS FIXTURE - TOOLING MYLAR ROLLER ASSEMBLY ROLLER END PLATE
FINISH: MACHINED SURFACES DEBURR & BREAK ALL SHARP EDGES UNLESS OTHERWISE NOTED	FINISH: 125	THIRDS ANGLE PROJECTION	SCALE: 4:1 SHEET: 1 OF 1
DO NOT SCALE DRAWING	DRAWN: C. SOOVA DATE: 26 JUNE 19	SIZE: DWG. NO. E A15006-07-01-0002	REV: -

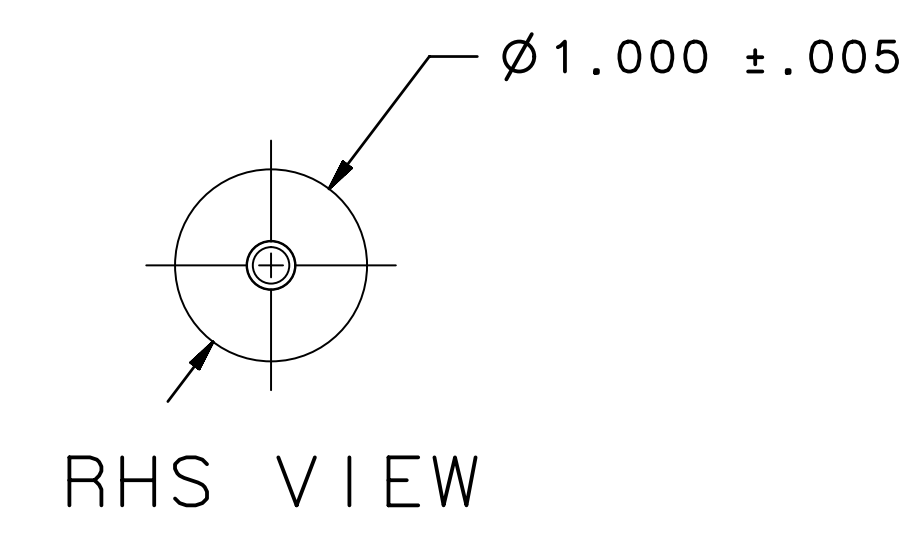
REVISION HISTORY		
ZONE	REV	DESCRIPTION



ISO VIEW



FRONT VIEW



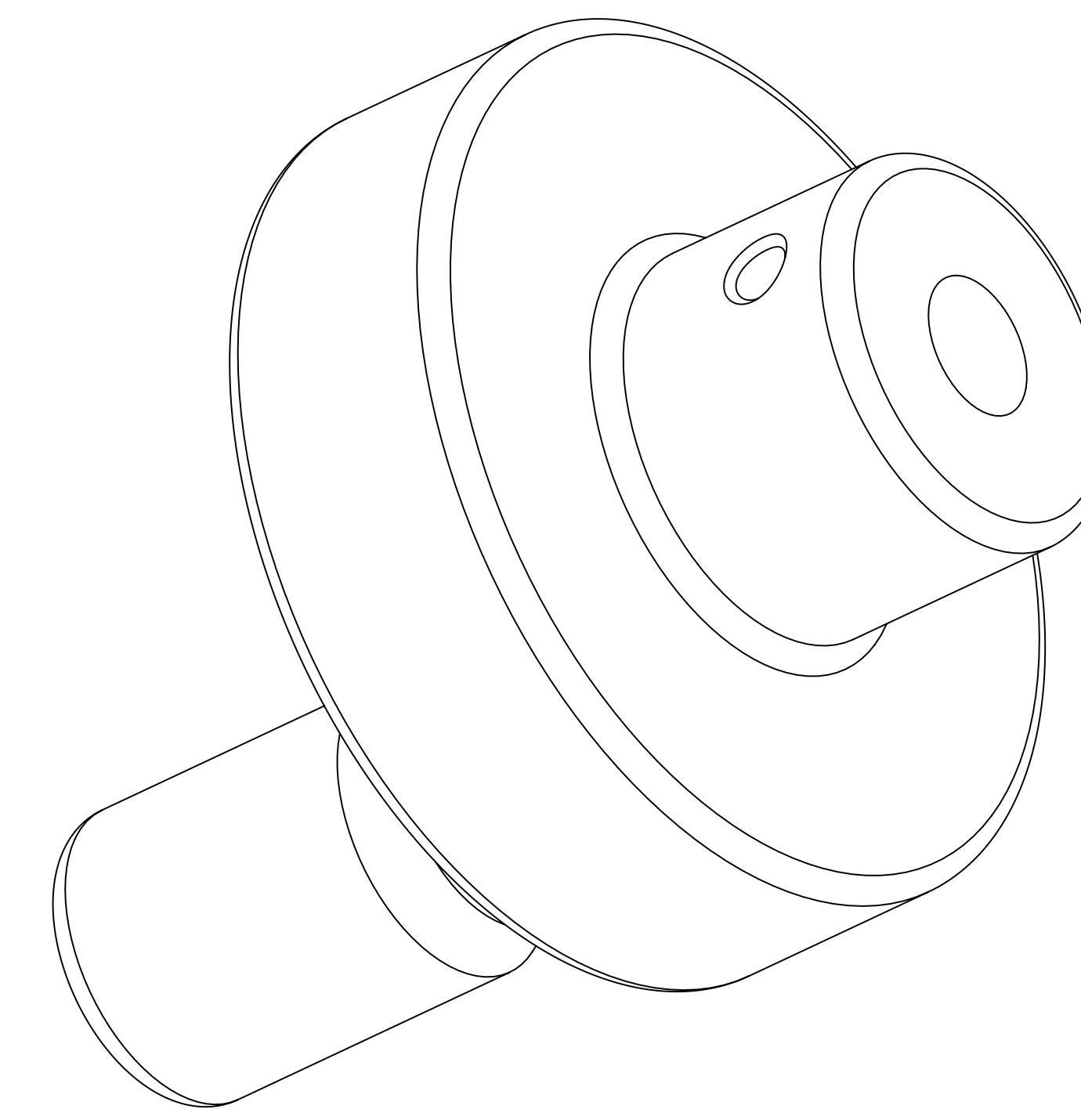
RHS VIEW

NOTES:

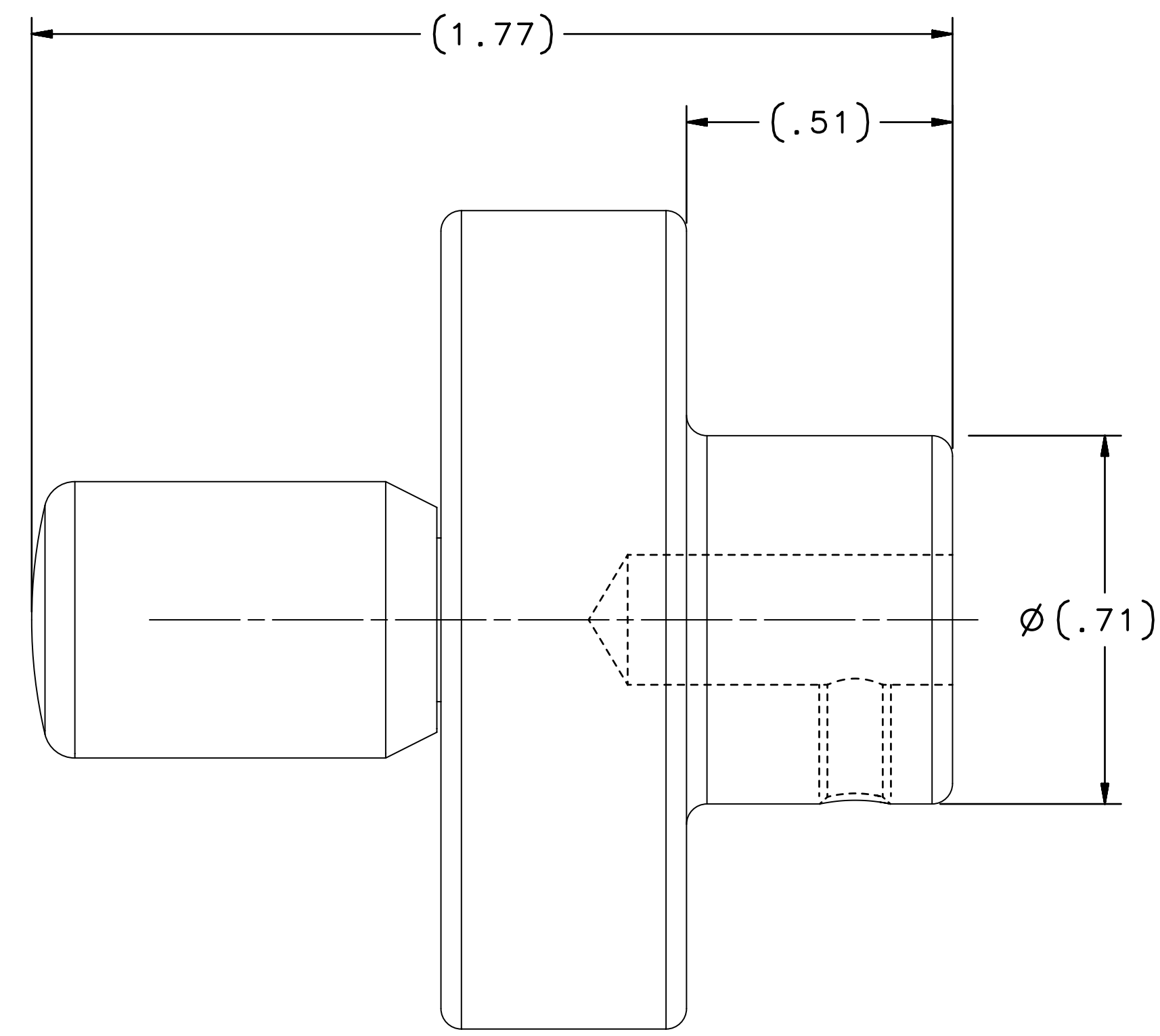
1. WEIGHT IS APPROXIMATELY 0.7 LBS.
2. PART TO BE CONDITIONED FOR SAFE HANDLING. REMOVE ALL BURRS AND BREAK SHARP EDGES R.03" MAX UNLESS OTHERWISE SPECIFIED.
3. IN ACCORDANCE WITH THE JEFFERSON LAB ESH&Q MANUAL SUBJECT MATTER EXPERT (SME) SIGNATURES MAY BE REQUIRED.
4. DRAWING PROVIDES BASIC DETAILS AND REQUIREMENTS FOR QUOTING PURPOSES. CHOSEN VENDOR FOR ROLLER FABRICATION WILL PROVIDE FINISH PRODUCT DESIGN DETAILS AND MATERIALS USED FOR FINAL APPROVAL.

EACH SHEET OF MULTI-SHEET DRAWINGS SHALL ALWAYS HAVE THE SAME REVISION LEVEL.			
<small>DIM &amp; TOL PER ASME Y14.5 2009. UNLESS OTHERWISE SPECIFIED DIMENSIONS ARE IN INCHES. TOLERANCES ARE:</small> FRACTIONS: $\pm 1/16$ DECIMAL: $\pm 0.01$ ANGLES: $\pm 50'$	MATERIAL: SEE NOTE 4	United States Department of Energy <b>Jefferson Lab</b> <small>Thomas Jefferson National Accelerator Facility</small> Newport News, Virginia	HALL A - A15006 - TDIS FIXTURES - TOOLING MYLAR ROLLER ASSEMBLY RUBBER ROLLER
THIRD ANGLE PROJECTION <small>FINISH: MACHINED SURFACES DEBURR &amp; BREAK ALL SHARP EDGES</small> DO NOT SCALE DRAWING DRAWN: C. SOOVA	DATE: 27 JUNE 19	SCALE: 1:1 <small>(SEE DWG. NO. A15006-07-01-0000)</small>	SIZE: DWG. NO. A15006-07-01-0003 SHEET 1 OF 1

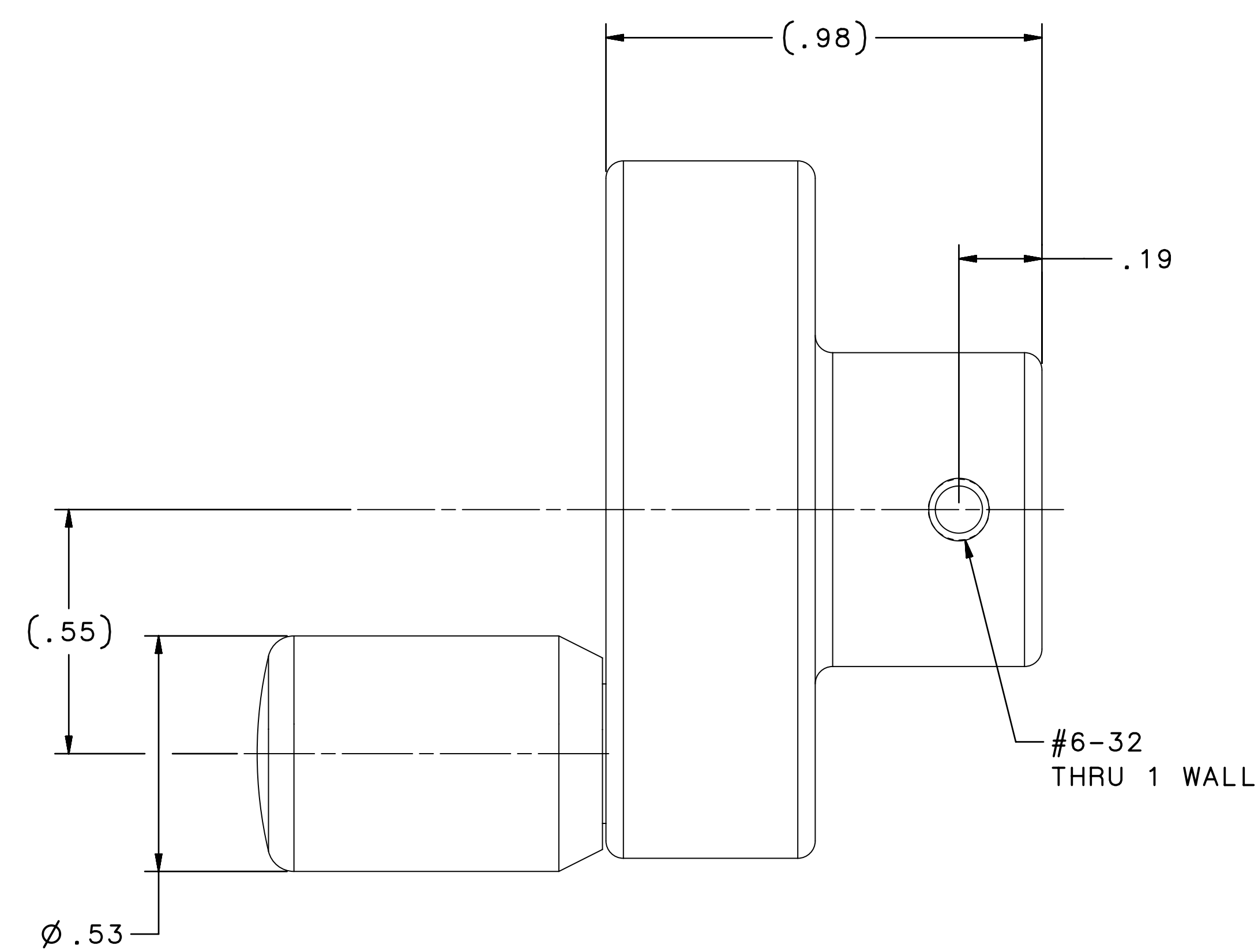
REVISION HISTORY		
ZONE	REV	DESCRIPTION



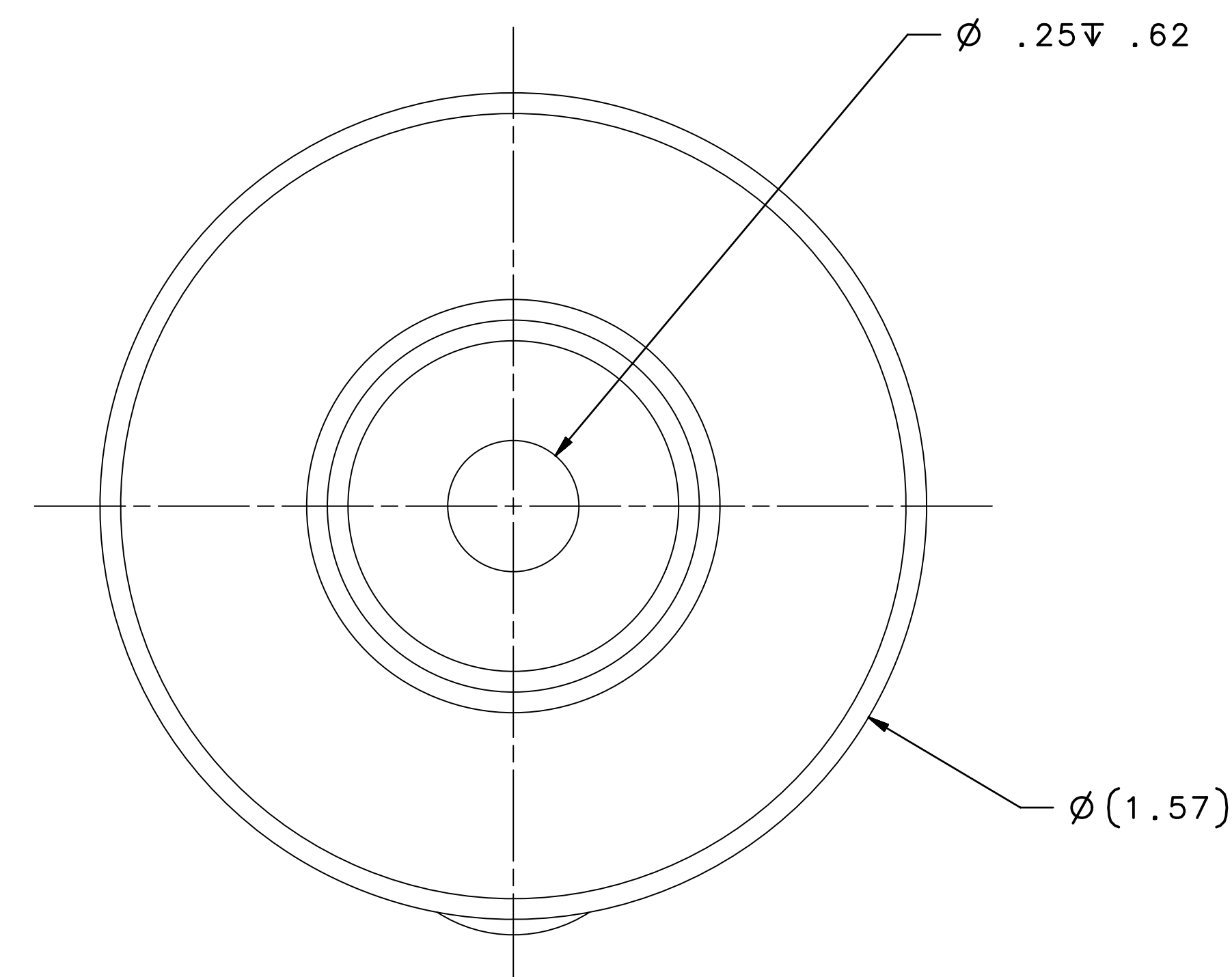
ISO VIEW



TOP VIEW



FRONT VIEW



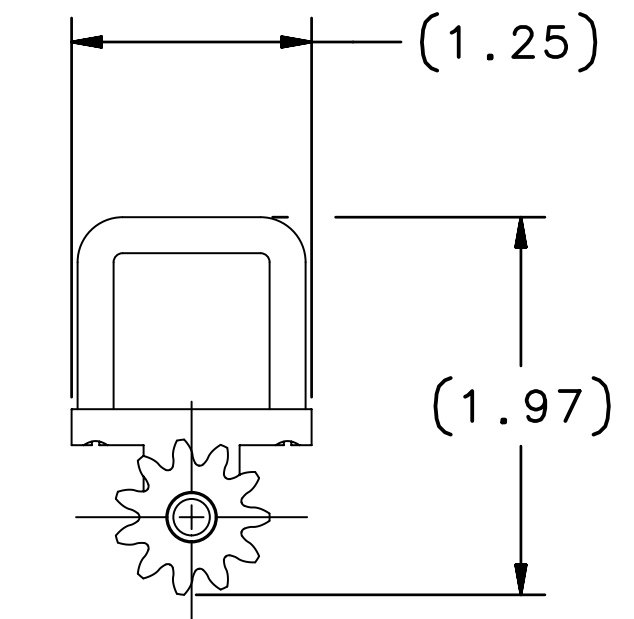
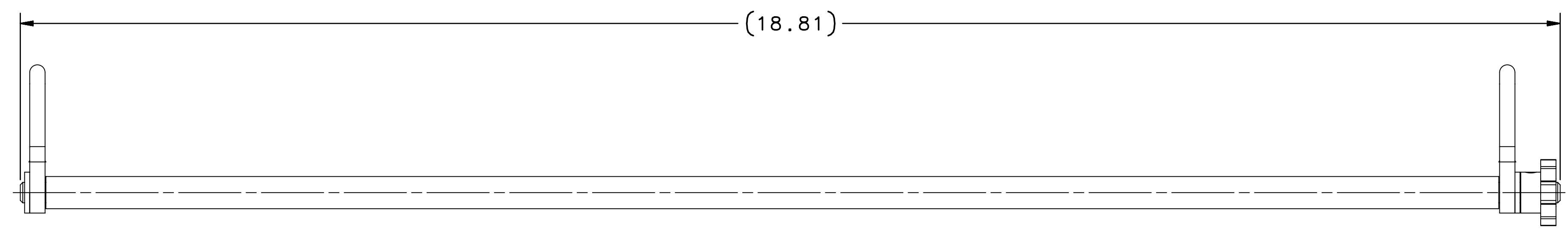
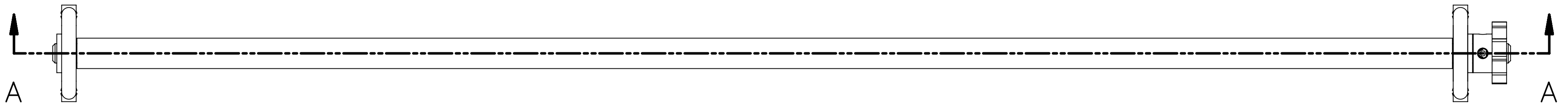
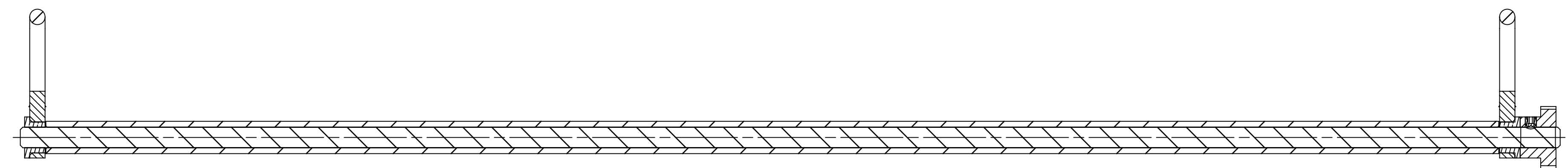
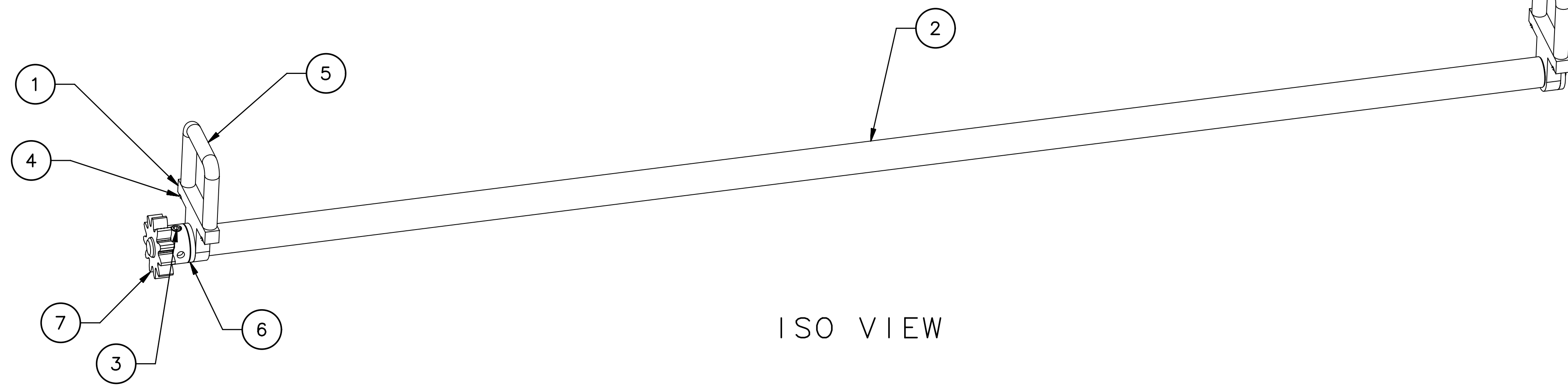
RHS VIEW

NOTES:

1. WEIGHT IS APPROXIMATELY 0.2 LBS.
2. PART TO BE CONDITIONED FOR SAFE HANDLING. REMOVE ALL BURRS AND BREAK SHARP EDGES R.03" MAX UNLESS OTHERWISE SPECIFIED.

EACH SHEET OF MULTI-SHEET DRAWINGS SHALL ALWAYS HAVE THE SAME REVISION LEVEL.			
<small>DIM &amp; TOL PER ASME Y14.5 2009. UNLESS OTHERWISE SPECIFIED DIMENSIONS ARE IN INCHES. TOLERANCES ARE:</small> FRACTIONS: ± 1/16 DECIMAL: ± 0.01 ANGLES: ± 30'	MATERIAL: IMAO AHR540-C ALUMINUM FINISH: MACHINED SURFACES DEBUR & BREAK ALL SHARP EDGES THIRDS ANGLE PROJECTION:	United States Department of Energy <b>Jefferson Lab</b> <small>Thomas Jefferson National Accelerator Facility</small> Newport News Virginia	HALL A - A15006 - TDIS FIXTURES - TOOLING MYLAR ROLLER ASSEMBLY ROLLER FINGER WHEEL
DO NOT SCALE DRAWING DRAWN: C. SOOVA DATE: 27 JUNE 19	SIZE: E DWG. NO.: A15006-07-01-0004 SCALE: 4:1 SHEET: 1 OF 1	REV. 1	SHEET: 1 OF 1

REVISION HISTORY		
ZONE	REV	DESCRIPTION



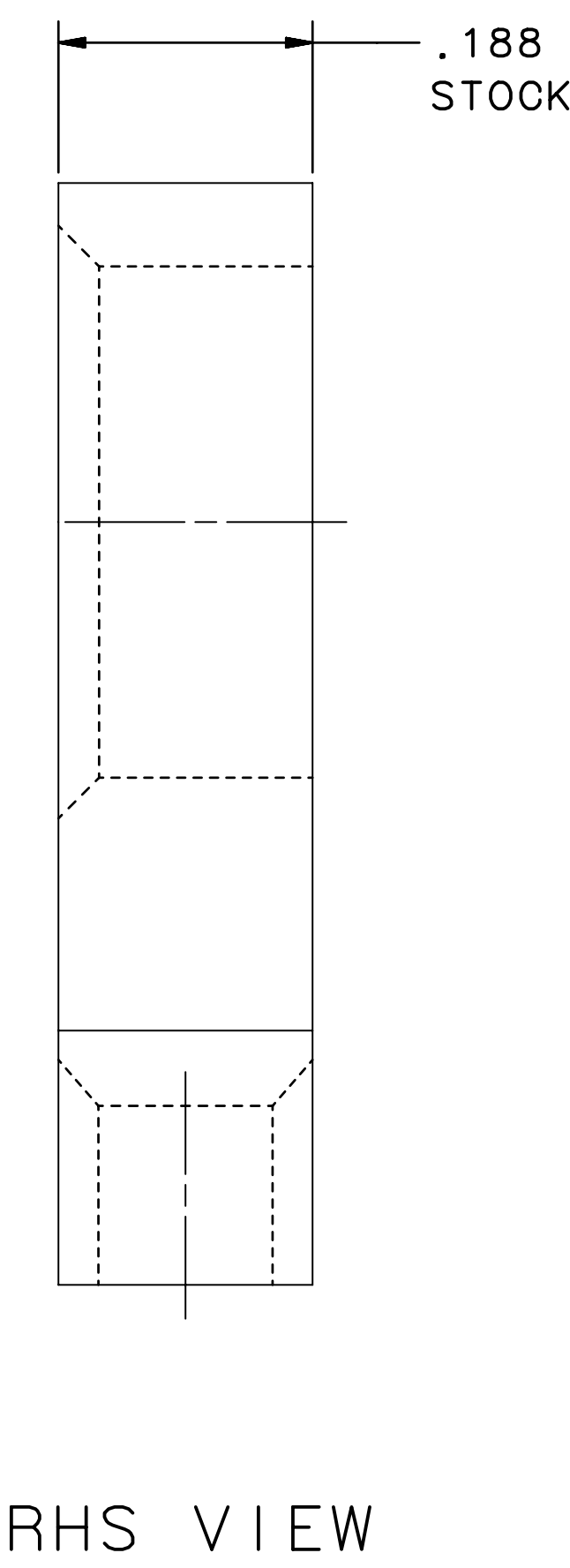
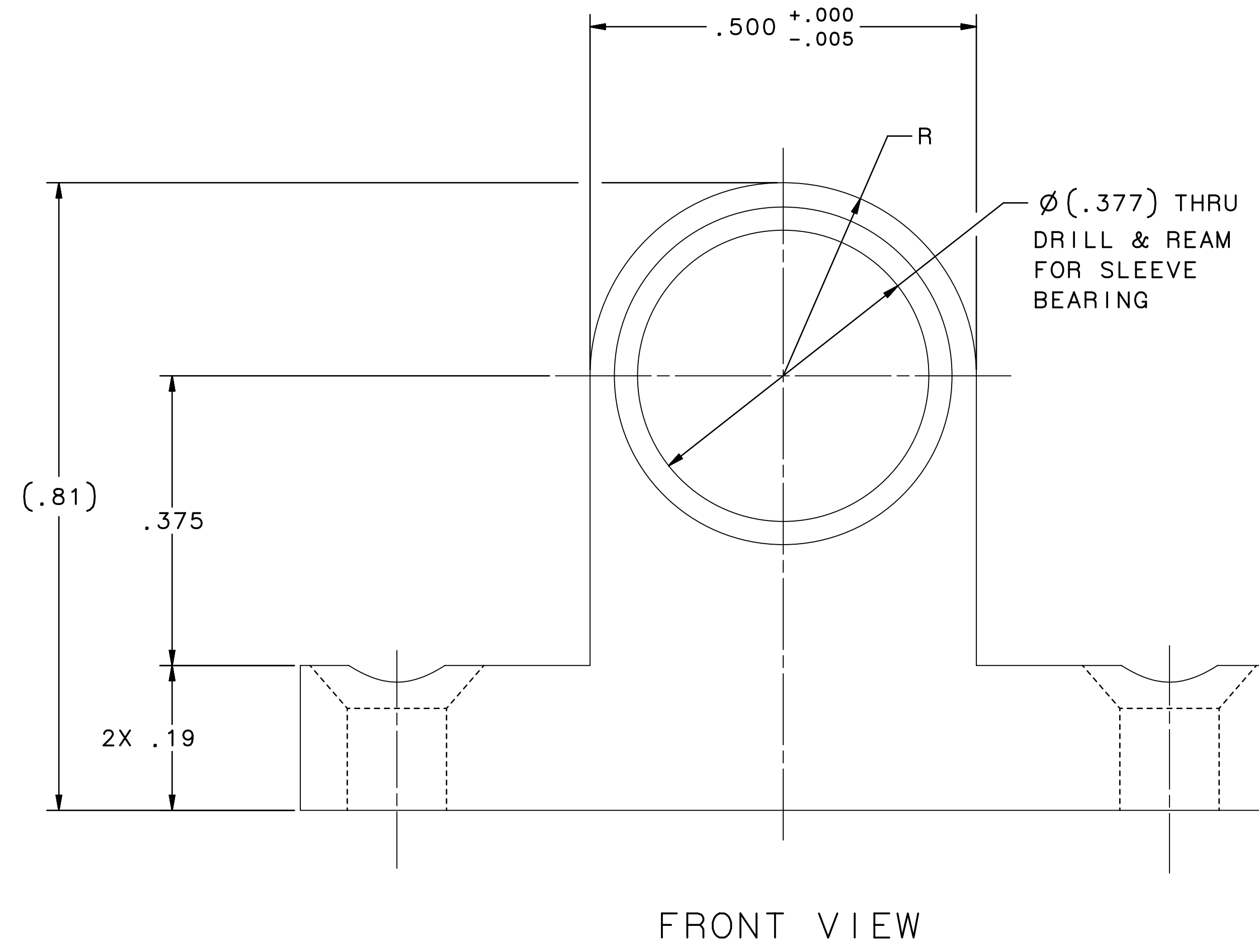
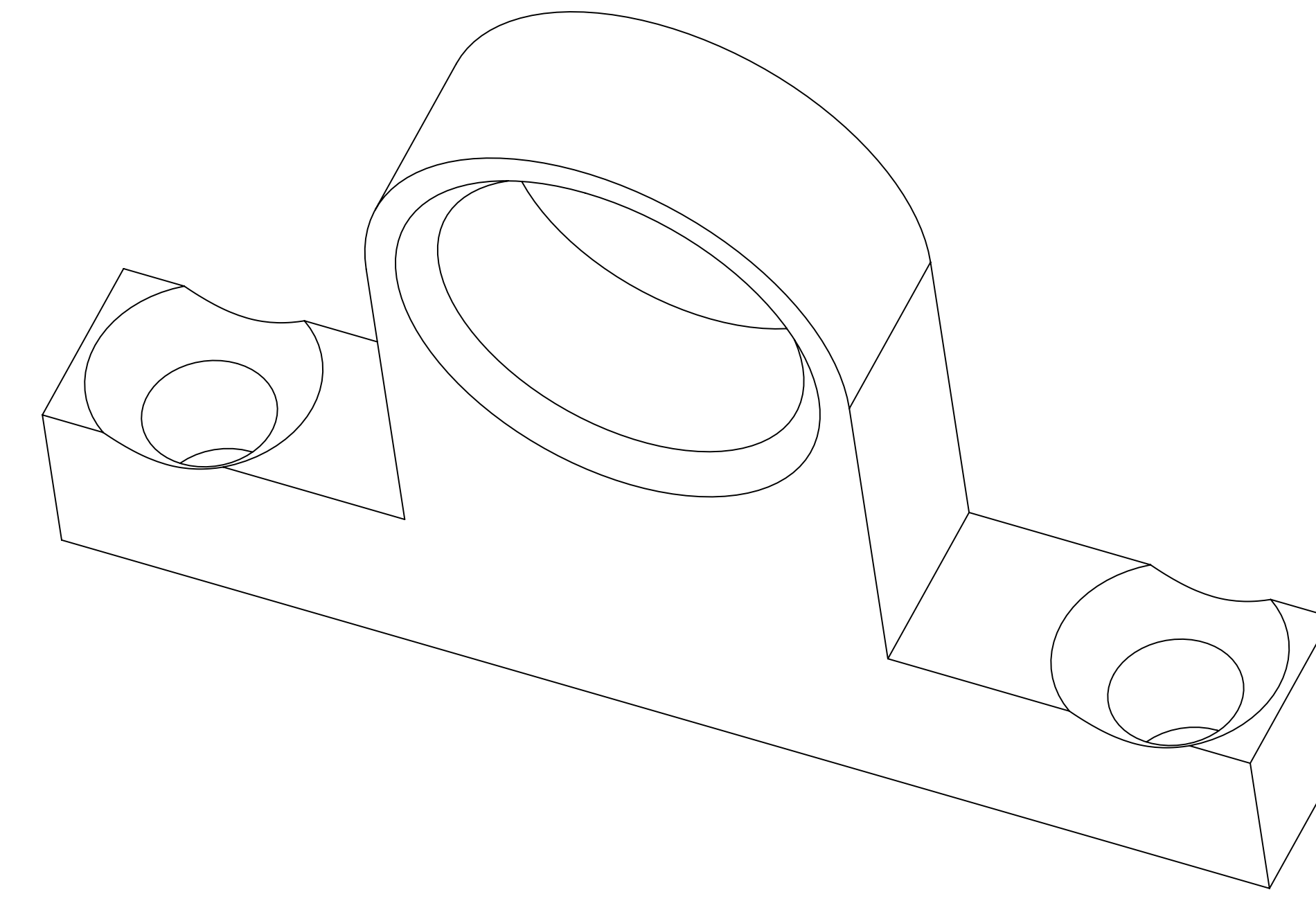
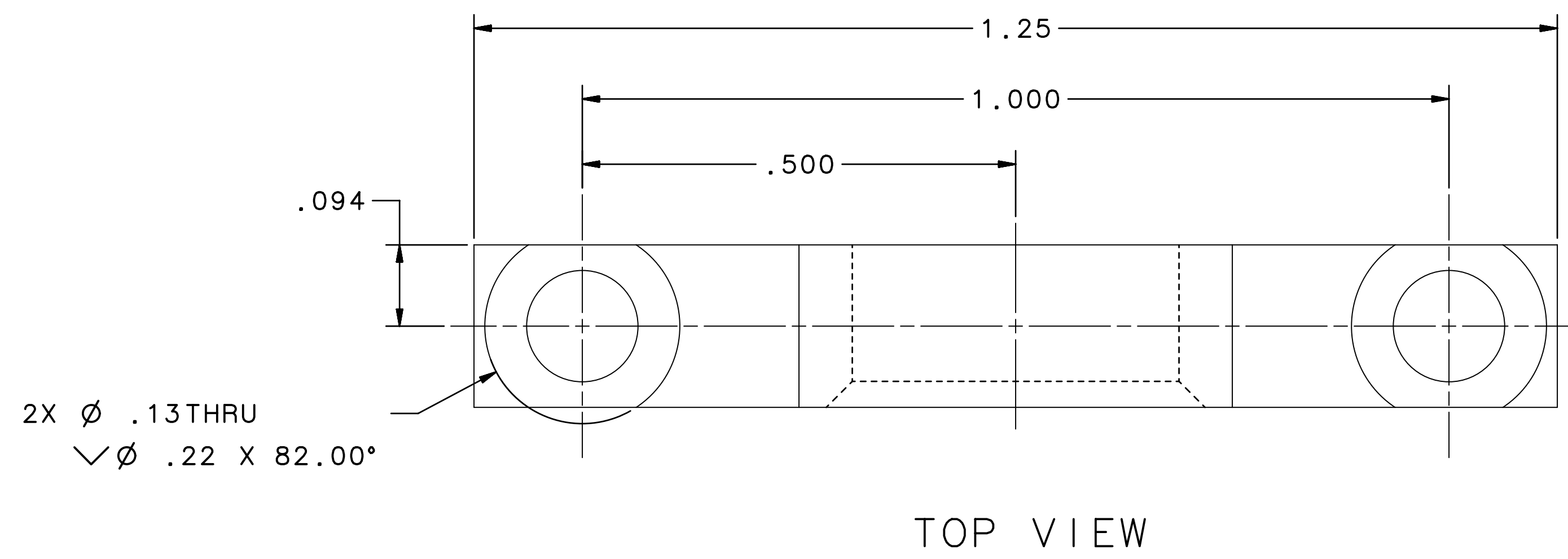
- NOTES:
1. WEIGHT IS APPROXIMATELY 0.4 LBS.
  2. PART TO BE CONDITIONED FOR SAFE HANDLING. REMOVE ALL BURRS AND BREAK SHARP EDGES R.03" MAX UNLESS OTHERWISE SPECIFIED.
  3. IN ACCORDANCE WITH THE JEFFERSON LAB ESH&Q MANUAL SUBJECT MATTER EXPERT (SME) SIGNATURES MAY BE REQUIRED.

QTY	ITEM NO.	PART OR IDENTIFYING NO.	NOMENCLATURE OR DESCRIPTION	MATERIAL	NOTES
1	7	PIC 16T11A	SPUR GEAR 0.813 OD X 0.2498 BORE	ALUMINUM 2024-T3	
2	6	MCMASTER-CARR 7815K11	FLG SLEEVE BEARING .25 ID X .25 LG	BRONZE	
2	5	MCMASTER-CARR 1568A61	PULL HANDLE	ALUMINUM 2024-T3	
4	4	FASTENAL 72032	FLAT HD MACHINE SCREW 4-40 X .375 LG	STAINLESS STEEL 18-8	
1	3	FASTENAL 0177654	SOCKET SET SCREW #6-32 X 0.125 CUP PT	STAINLESS STEEL 316	
1	2	A15006-07-01-0102	TEFLON/PTFE ROLLER	PTFE TUBE	
2	1	A15006-07-01-0101	ROLLER SUPPORT PLATE	ALUMINUM 6061-T6	

EACH SHEET OF MULTI-SHEET DRAWINGS SHALL ALWAYS HAVE THE SAME REVISION LEVEL.

DIM & TOL PER ASME Y14.5 2009. UNLESS OTHERWISE SPECIFIED DIMENSIONS ARE IN INCHES. TOLERANCES ARE: FRACTIONS: ± 1/16 DECIMAL: ± .01 ANGLES: ± 30'	MATERIAL: SEE PARTS LIST FINISH: MACHINED SURFACES DEBURR & BREAK ALL SHARP EDGES UNLESS OTHERWISE NOTED	United States Department of Energy <b>Jefferson Lab</b> <small>Thomas Jefferson National Accelerator Facility</small> Newport News, Virginia
THIRD ANGLE PROJECTION DO NOT SCALE DRAWING DRAWN: C. SOOVA DATE: 26 JUNE 19	HALL A - A15006 - TDIS FIXTURES - TOOLING MYLAR ROLLER ASSEMBLY TEFLON/PTFE ROLLER ASSEMBLY SIZE: E DWG. NO.: A15006-07-01-0100 SCALE: 1:1 SHEET: 1 OF 1	REV: -

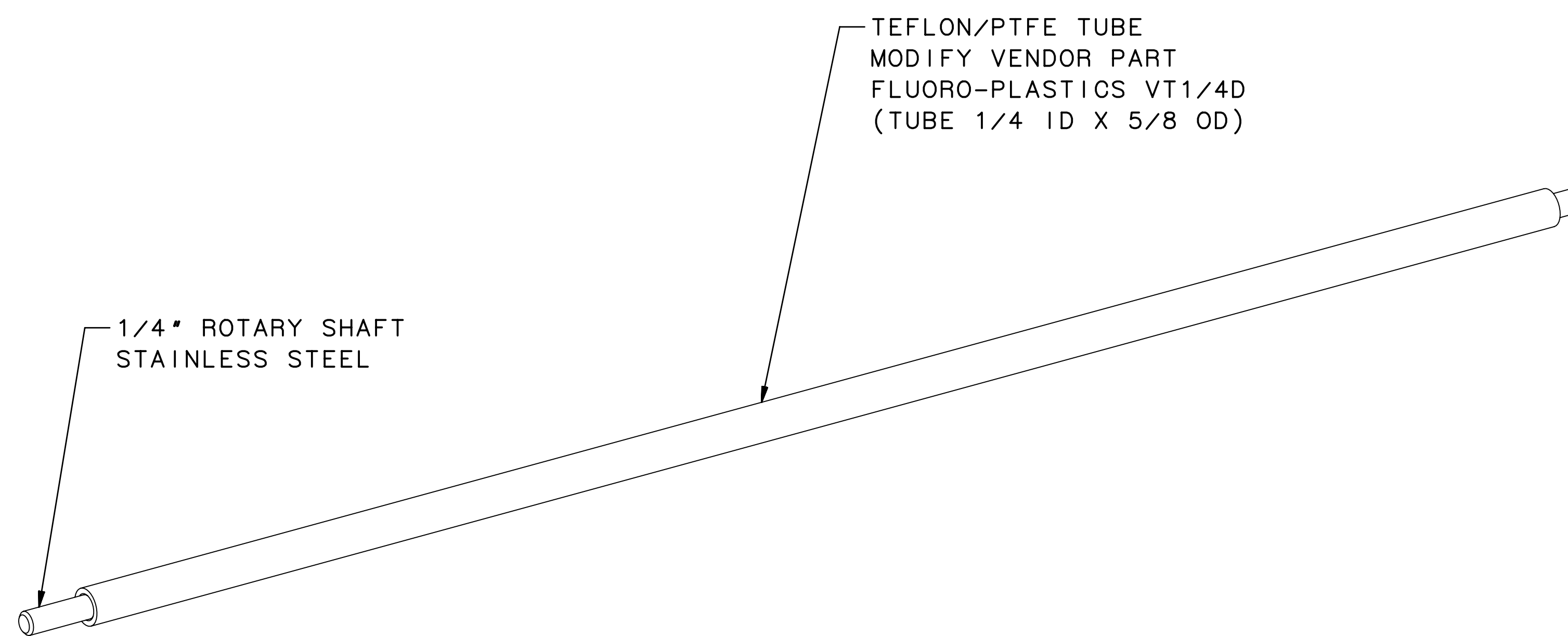
REVISION HISTORY		
ZONE	REV	DESCRIPTION



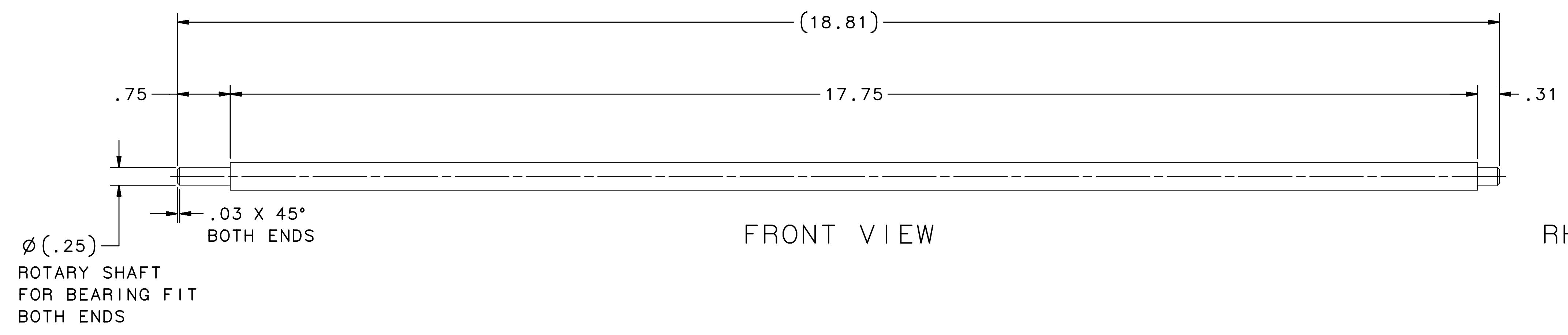
NOTES:

1. WEIGHT IS APPROXIMATELY 0.01 LBS.
2. PART TO BE CONDITIONED FOR SAFE HANDLING. REMOVE ALL BURRS AND BREAK SHARP EDGES R.03" MAX UNLESS OTHERWISE SPECIFIED.

EACH SHEET OF MULTI-SHEET DRAWINGS SHALL ALWAYS HAVE THE SAME REVISION LEVEL.			
<small>DIM &amp; TOL PER ASME Y14.5 2009. UNLESS OTHERWISE SPECIFIED DIMENSIONS ARE IN INCHES. TOLERANCES ARE:</small> FRACTIONS ± 1/16 DECIMAL ± .01 ANGLES ± .50°	MATERIAL ALUMINUM 6061-T6	United States Department of Energy <b>Jefferson Lab</b> <small>Thomas Jefferson National Accelerator Facility</small> Newport News Virginia	HALL A - A15006 - TDIS FIXTURES - TOOLING TEFLON/PTE ROLLER ASSEMBLY ROLLER SUPPORT PLATE
THIRD ANGLE PROJECTION DO NOT SCALE DRAWING DRAWN C. SOOVA	FINISH MACHINED SURFACES DEBURR & BREAK ALL SHARP EDGES	UNLESS OTHERWISE NOTED 125 SCALE 8:1 DATE 27 JUNE 19	SIZE DWG. NO. B A15006-07-01-0101 REV. - SHEET 1 OF 1



ISO VIEW



FRONT VIEW

RHS VIEW

NOTES:

1. WEIGHT IS APPROXIMATELY 0.2 LBS.
2. PART TO BE CONDITIONED FOR SAFE HANDLING. REMOVE ALL BURRS AND BREAK SHARP EDGES R.03" MAX UNLESS OTHERWISE SPECIFIED.
3. IN ACCORDANCE WITH THE JEFFERSON LAB ESH&Q MANUAL SUBJECT MATTER EXPERT (SME) SIGNATURES MAY BE REQUIRED.
4. DRAWING PROVIDES BASIC DETAILS AND REQUIREMENTS FOR QUOTING PURPOSES. CHOSEN VENDOR FOR ROLLER FABRICATION WILL PROVIDE FINISH PRODUCT DESIGN DETAILS AND MATERIALS USED FOR FINAL APPROVAL.

EACH SHEET OF MULTI-SHEET DRAWINGS SHALL ALWAYS HAVE THE SAME REVISION LEVEL.			
<small>DIM &amp; TOL PER ASME Y14.5 2009. UNLESS OTHERWISE SPECIFIED DIMENSIONS ARE IN INCHES. TOLERANCES ARE:</small> <small>FRACTIONS</small> ± 1/16 <small>DECIMAL</small> ± .01 <small>ANGLES</small> ± .50°	<small>MATERIAL</small> SEE NOTE 4	<small>FINISH</small> MACHINED SURFACES DEBUR & BREAK ALL SHARP EDGES	<small>UNLESS OTHERWISE NOTED</small>
<small>THIRD ANGLE PROJECTION</small> 	<small>DO NOT SCALE DRAWING</small>	<small>DATE</small> 27 JUNE 19	<small>SCALE</small> 1:1
<small>UNITED STATES DEPARTMENT OF ENERGY</small> <b>Jefferson Lab</b> <small>Thomas Jefferson National Accelerator Facility</small>		<small>NEWPORT NEWS VIRGINIA</small> HALL A - A15006 - TDIS FIXTURES - TOOLING TEFLON/PTFE ROLLER ASSEMBLY TEFLON/PTFE ROLLER	<small>SIZE</small> DWG. NO. A15006-07-01-0102 <small>REV.</small> 1 OF 1
<small>DRAWN</small> C. SOOVA		<small>REVISION HISTORY</small>	