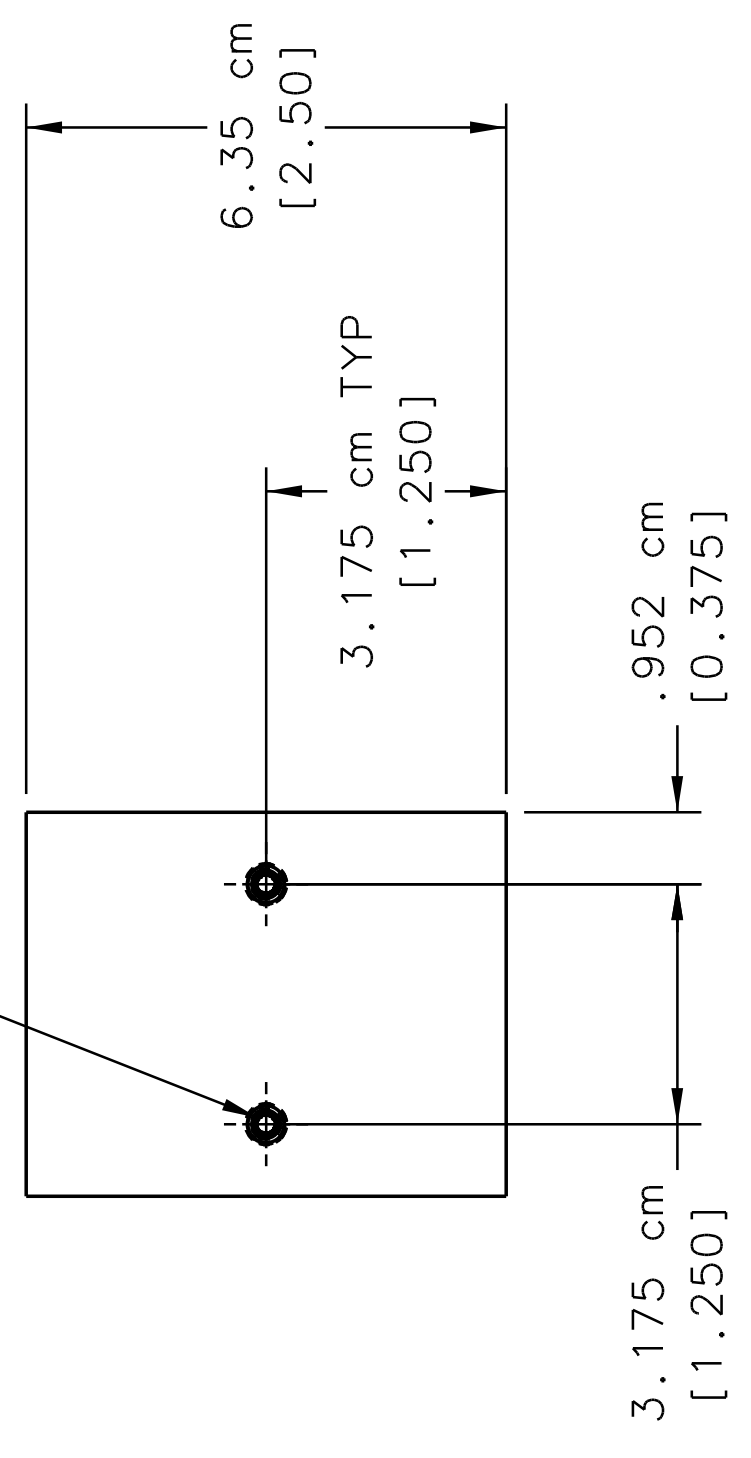
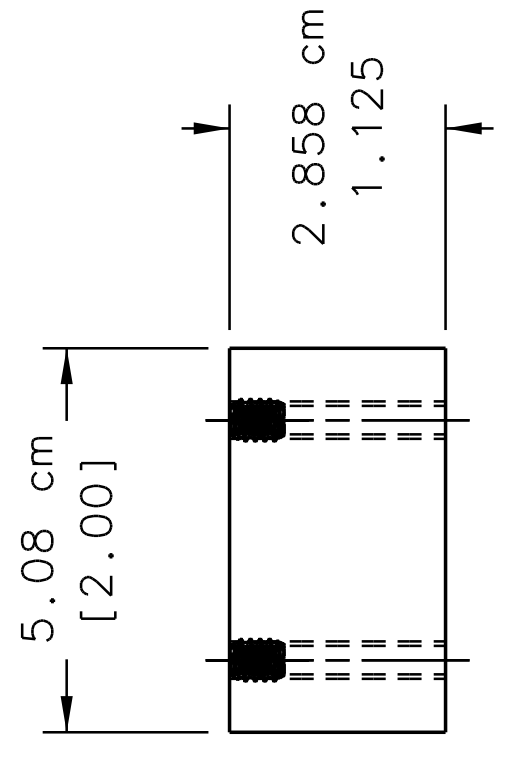


REVISION HISTORY		ZONE	REV	DATE	APPROVED
1					

INSTALL TWO INSERTS THIS SIDE. SUGGESTED DRILL BIT SIZE 0.194".



TOP VIEW 1-4C



FRONT VIEW 1-4B

2	1	McMASTER-CARR 99362A300	TPG INSERT FOR PLASTIC #6-32 INTL THD x 9/32 LG	BRASS	-
QTY REOD	ITEM NO.	PART OR IDENTIFYING NO.	NOMENCLATURE OR DESCRIPTION	MATERIAL SPECIFICATION	NOTES

DOCUMENT CONTROL STAMP

DIM & TOL PER ASME Y14.5 UNLESS OTHERWISE SPECIFIED DIMENSIONS ARE IN INCHES TOLERANCES ARE:

FRACTIONS	DECIMAL	ANGLES
± N/A	.X ± .1	± .50°
	.XX ± .01	
	.XXX ± .005	

THIRD ANGLE PROJECTION

MATERIAL ACETAL (DELRIN)

FINISH MACHINED SURFACES UNLESS OTHERWISE NOTED DEBURR & BREAK ALL SHARP EDGES

DO NOT SCALE DRAWING

PARTS LIST		TRACKING NO.	
APPROVALS	DATE	N/A	
DRAWN S. ESP	25 NOV 13		
CHECKED			
APPROVED			
APPROVED			

United States Department of Energy  
Jefferson Lab  
Thomas Jefferson National Accelerator Facility  
Newport News Virginia

HALL A - GENI EQUIPMENT  
GRINCH DETECTOR ASSY  
PMT ARRAY BOX ASSY  
SPACER TOP / BOTTOM

SIZE DWG. NO. C A00000-01-01-3406 REV. -

SCALE 1:1 USED ON ASSY NO. A00000-01-01-3400 SHEET 1 OF 1