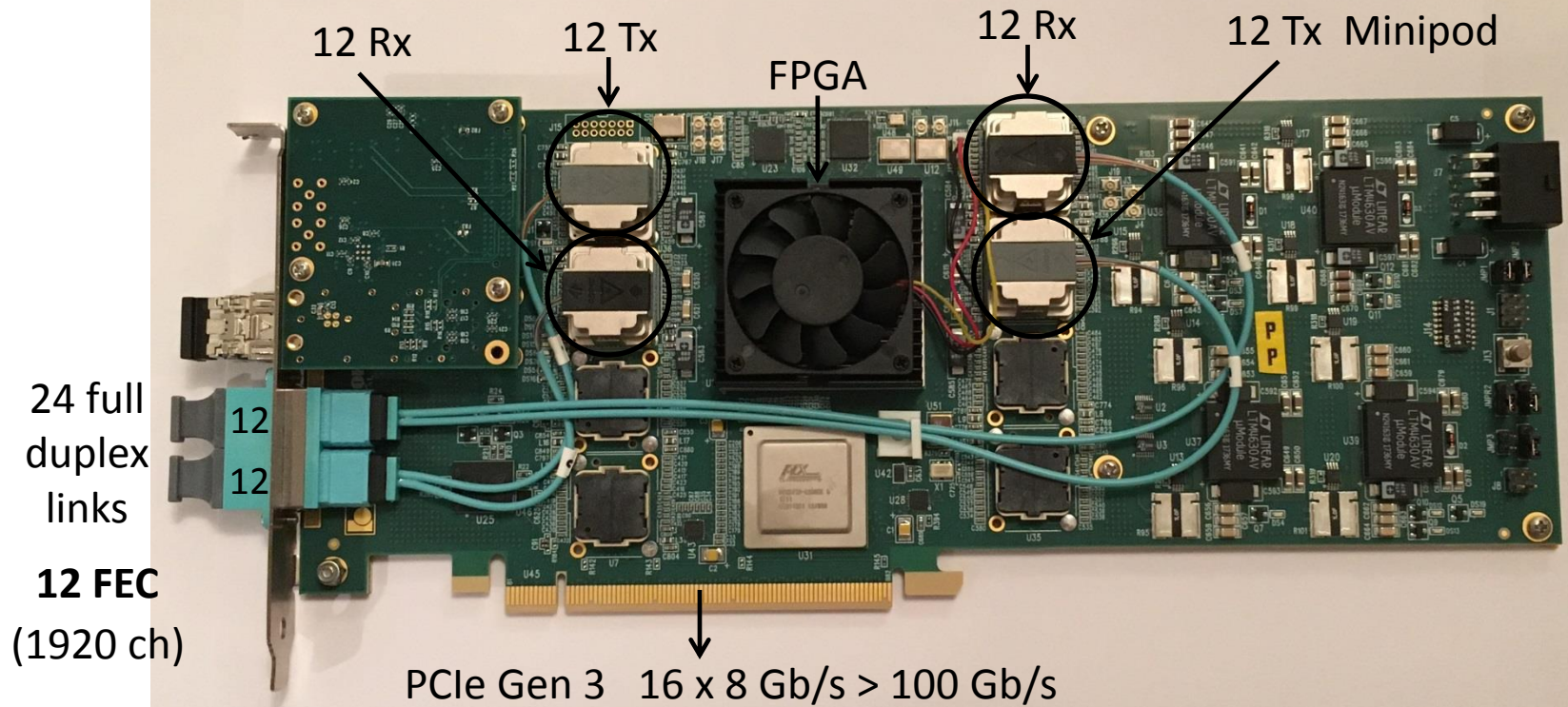


FELIX BNL 712



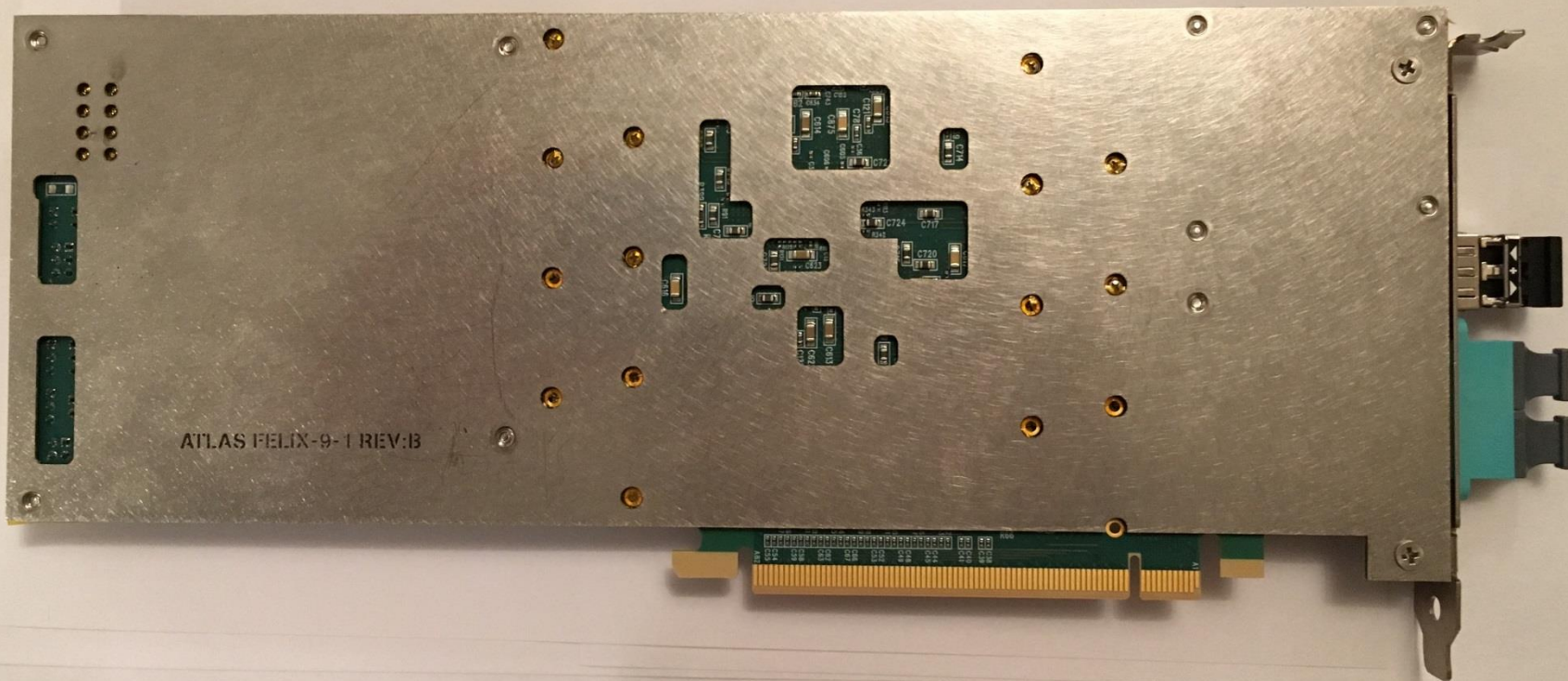
24 full duplex links

12 FEC (1920 ch)

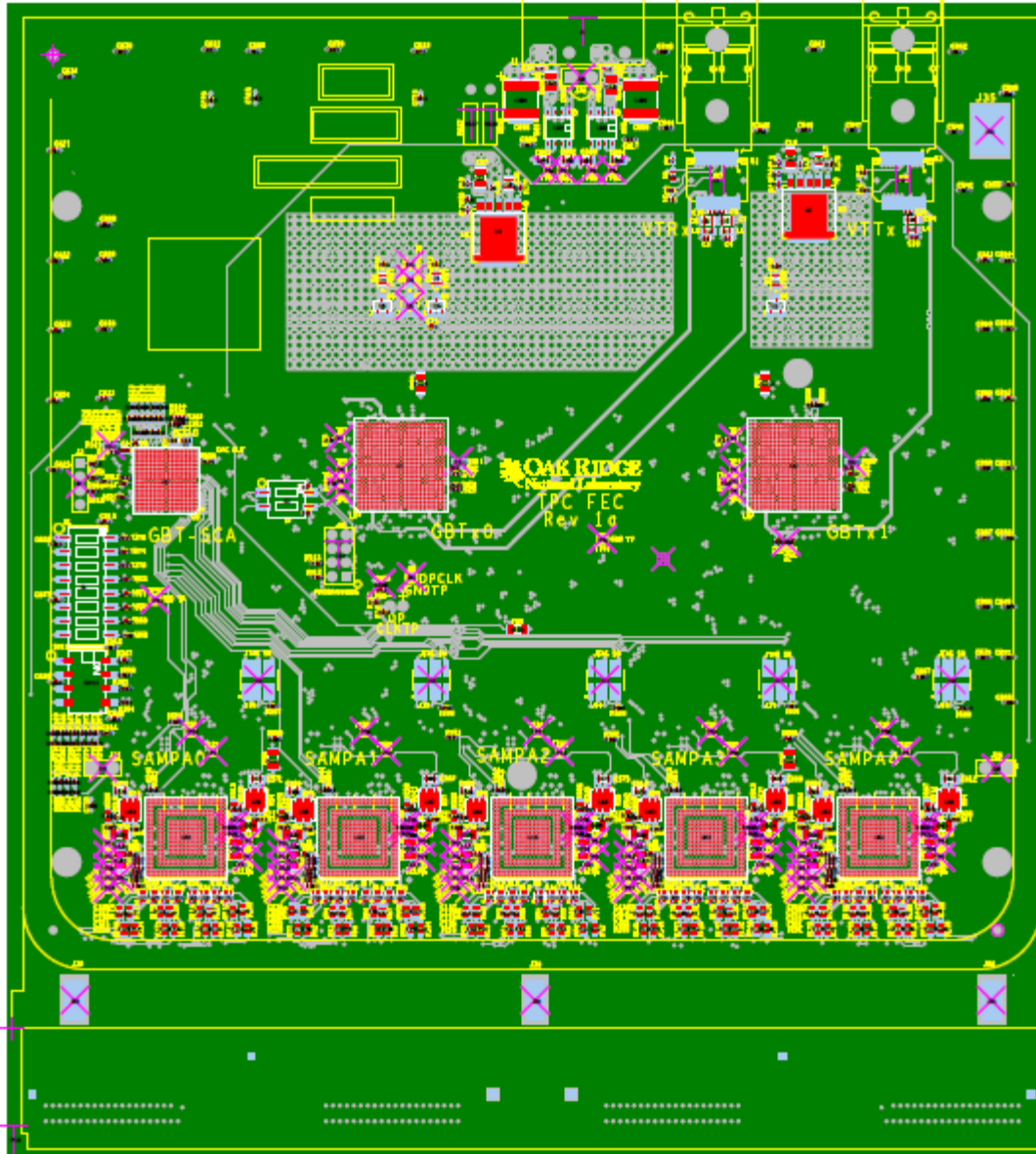
PCIe Gen 3 16 x 8 Gb/s > 100 Gb/s

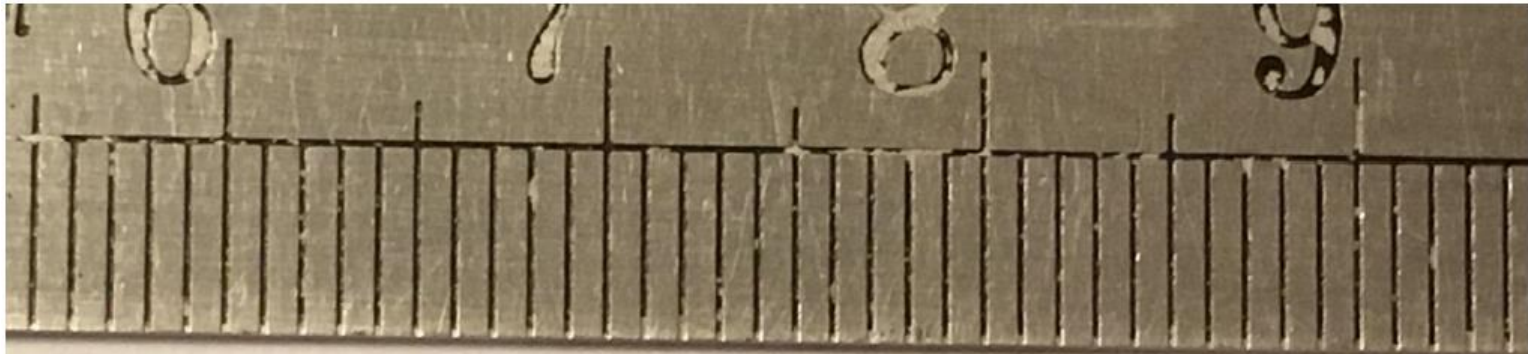
Add 2 Tx & 2 Rx Minipods + cable change = 48 full duplex links (24 FEC, 3840 ch)

Stiffener plate (rear side)



Modified FEC





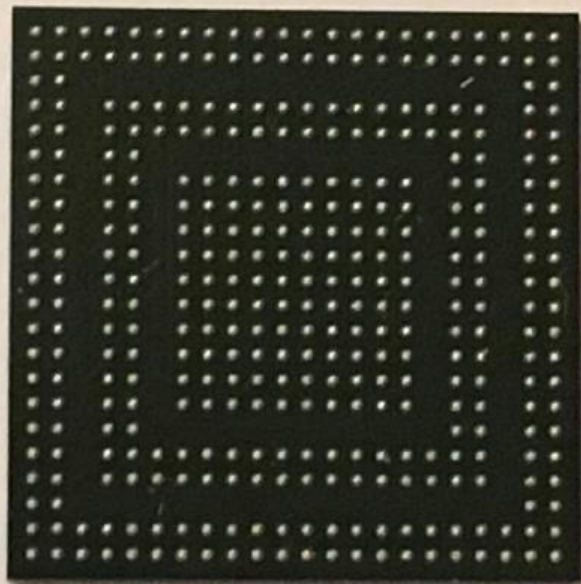
->| |<-
1 mm

Power and ground on
inner contacts, mid
contacts

I/O on outer contacts,
mid contacts

32 channels

1.25V 0.5W



0.65 mm pitch, 372 balls



SAMPA