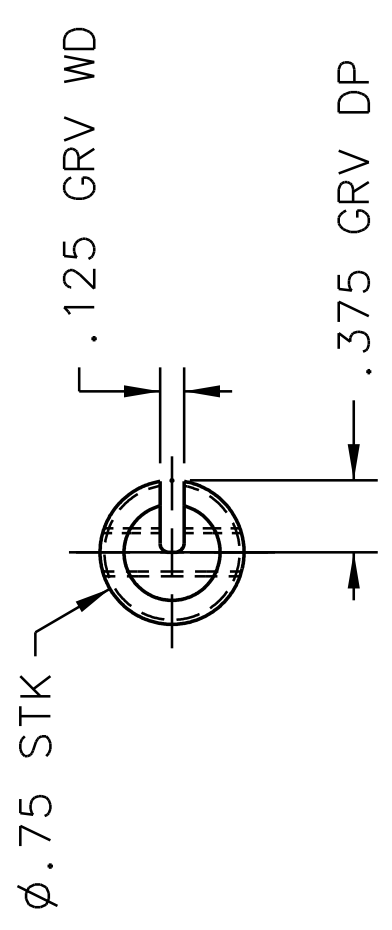
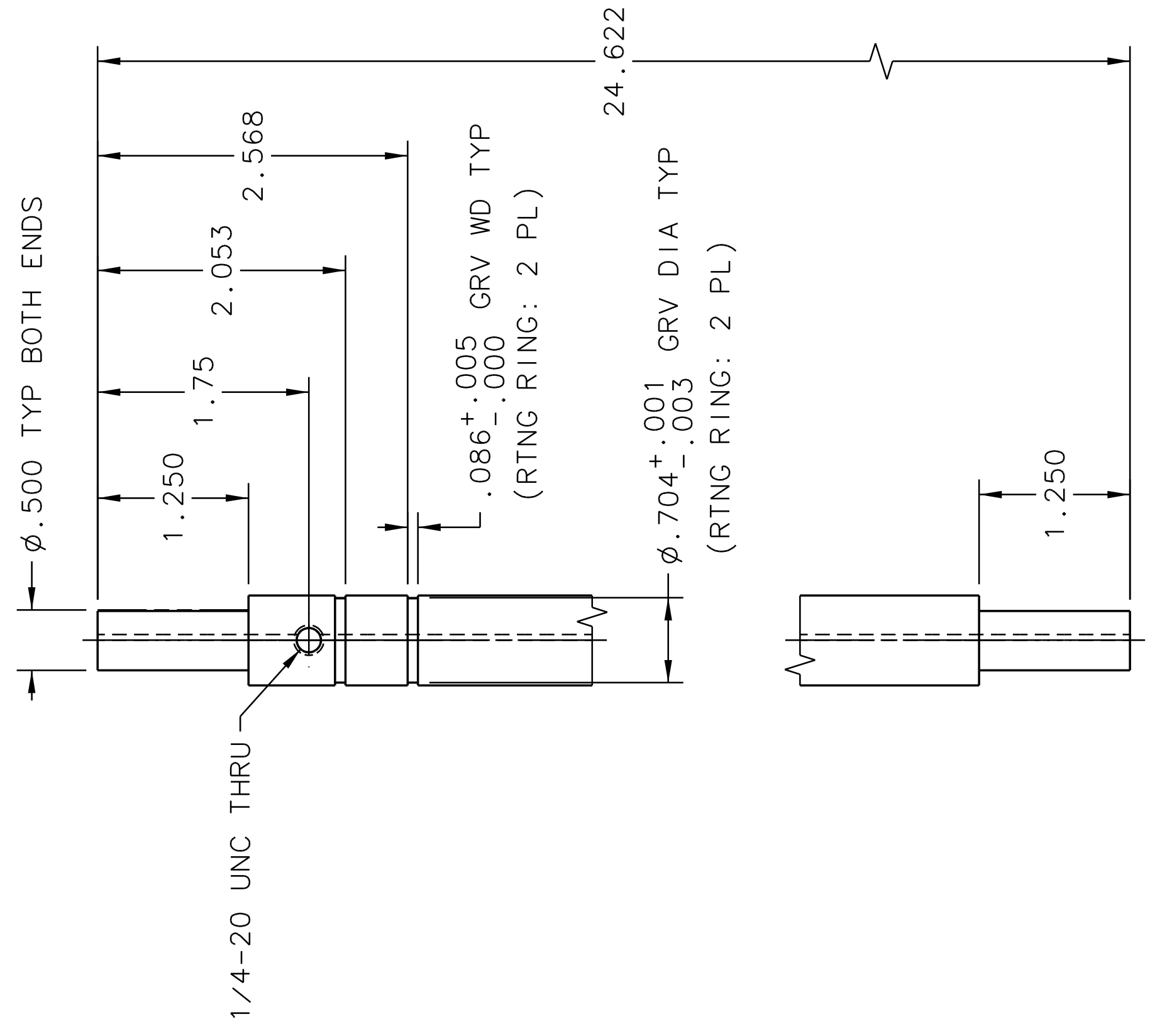


REVISION HISTORY		ZONE	REV	DESCRIPTION	DATE	APPROVED
1						



TOP VIEW 1-4D



FRONT VIEW 1-4A

NOTES:

1. PART TO BE CONDITIONED FOR SAFE HANDLING.
2. REMOVE ALL BURRS AND SHARP EDGES.
3. WEIGHT IS APPROXIMATELY 1 LB.

DOCUMENT CONTROL STAMP	DIM & TOL PER ASME Y14.5 UNLESS OTHERWISE SPECIFIED DIMENSIONS ARE IN INCHES TOLERANCES ARE:		TRACKING NO.	
	FRACTIONS ± N/A	DECIMAL ± .01	ANGLES ± .50°	N/A
MATERIAL 6061-T6 ALUMINUM ROUND	THIRD ANGLE PROJECTION		APPROVALS	DATE
FINISH MACHINED SURFACES DEBURR & BREAK ALL SHARP EDGES	DO NOT SCALE DRAWING		DRAWN S. ESP	03 OCT 13
UNLESS OTHERWISE NOTED			CHECKED	
			APPROVED	
			APPROVED	
UNITED STATES DEPARTMENT OF ENERGY			JEFFERSON LAB Thomas Jefferson National Accelerator Facility	
HALL A - GENI EQUIPMENT			Newport News Virginia	
GRINCH DETECTOR ASSY			Large Reflector Assy	
ROUND 3/4 OD LGE REFL HOLDER			REV. -	
SIZE DWG. NO. C A00000-01-01-2402			SCALE 1:1 USED ON ASSY NO. A00000-01-01-2400 SHEET 1 OF 1	