

HV Scan Results for First 5 UVA GEM Layers (#0 - #4) *Before* Changing the HV Divider

09/09/2020

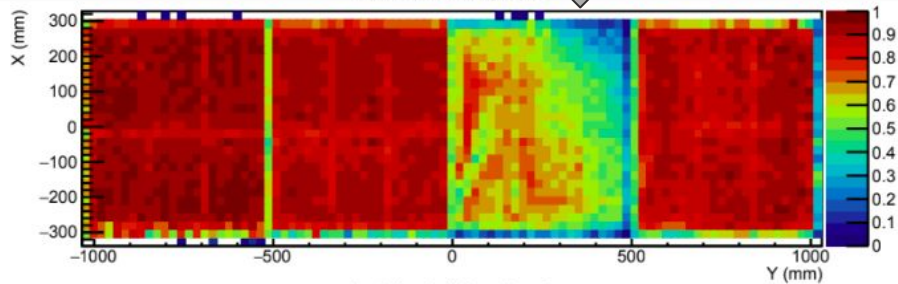
Relative Efficiency = #Clusters in the module / #Triggers

Track based Efficiency = \sum Bin Content / #Bins
[in the 2D efficiency Histograms]

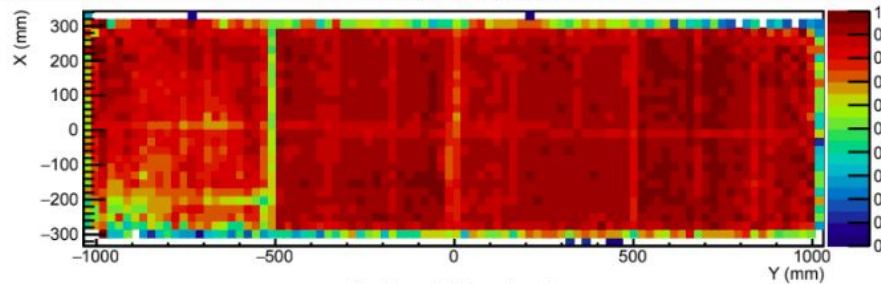
Module #16



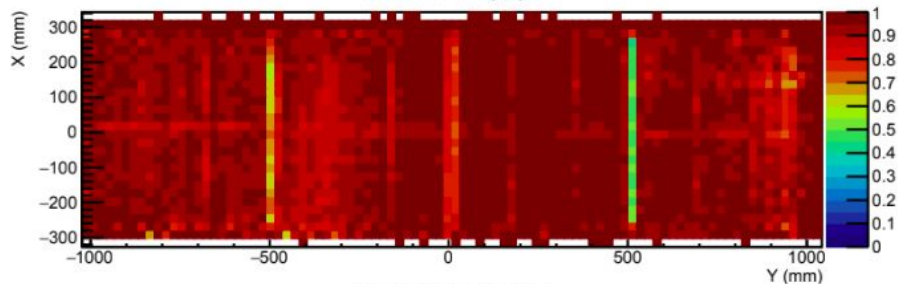
Track-based efficiency, layer 0



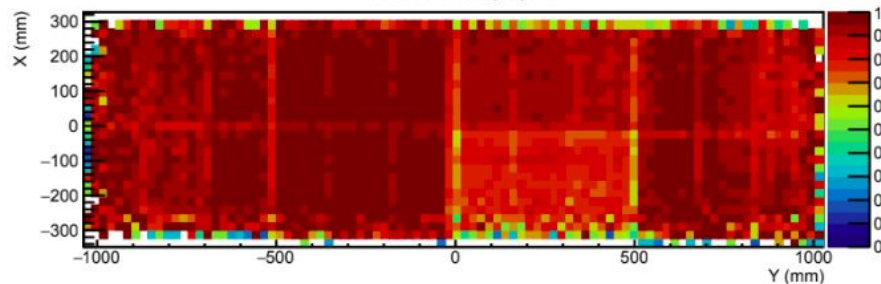
Track-based efficiency, layer 1



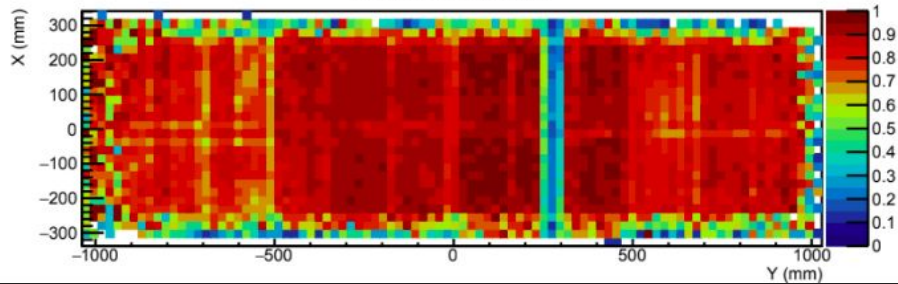
Track-based efficiency, layer 2



Track-based efficiency, layer 3

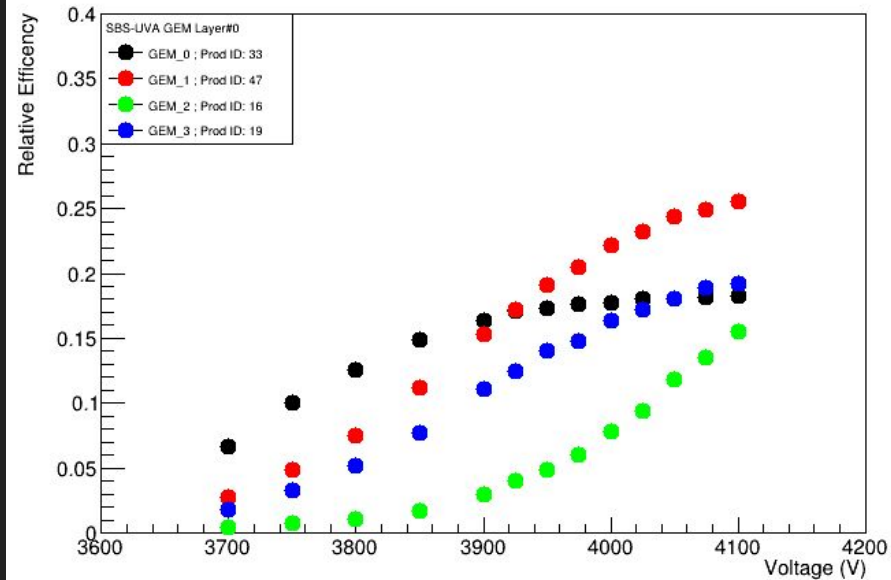


Track-based efficiency, layer 4

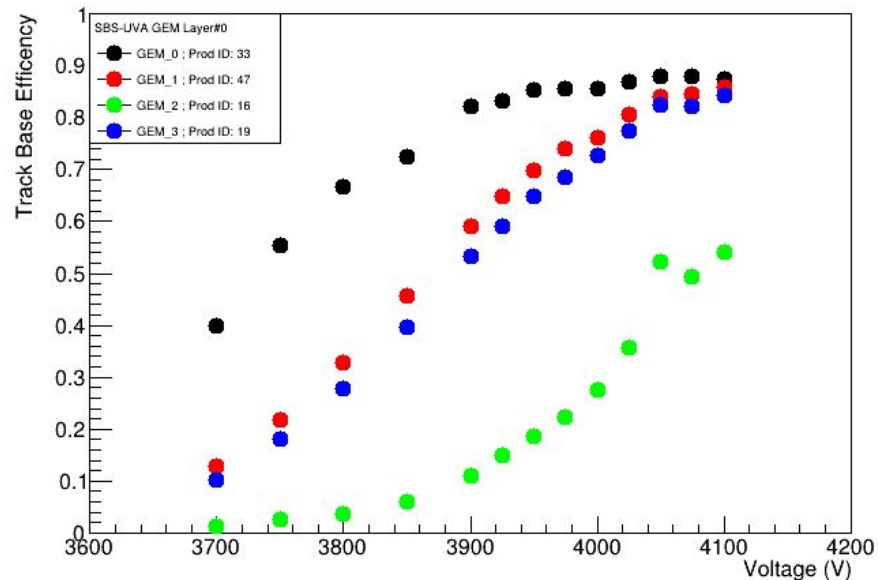


Layer#0 / 1st Layer

GEM Layer#0

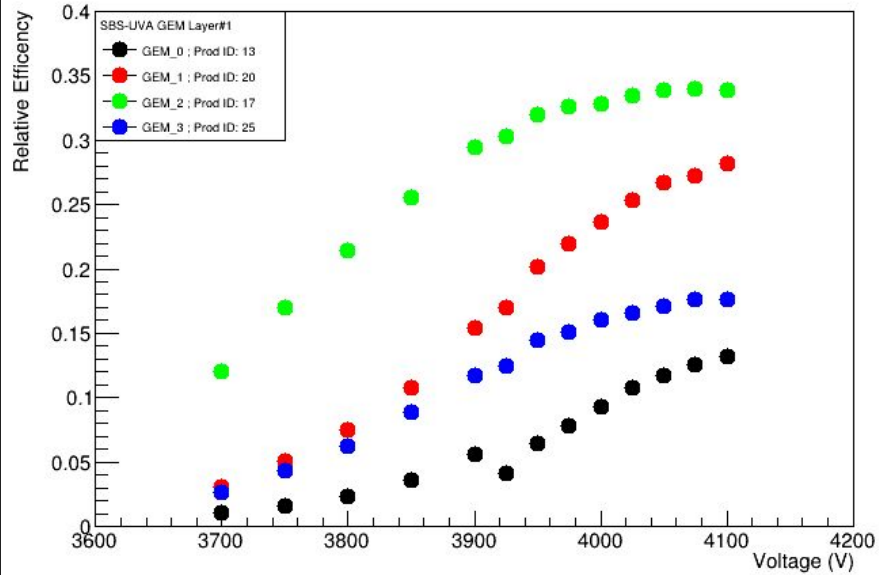


GEM Layer#0

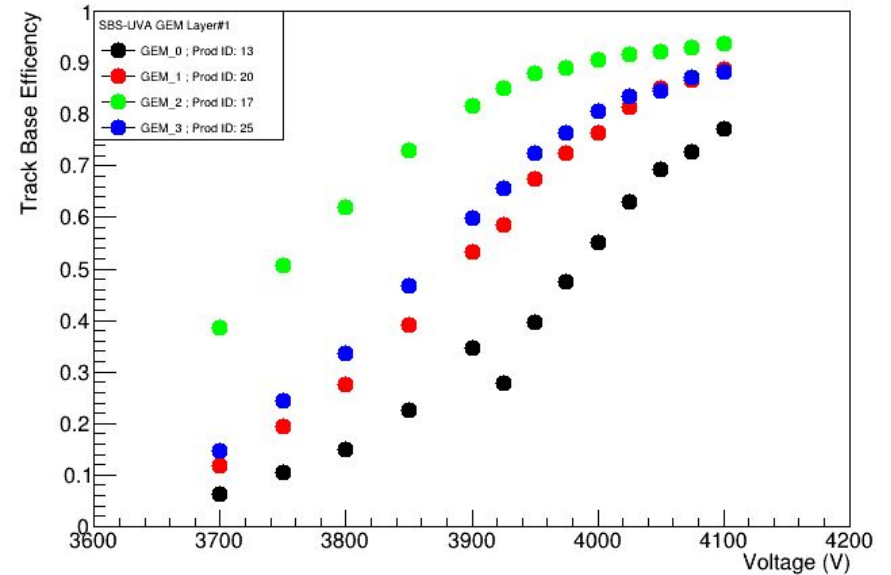


Layer#1 / 2nd Layer

GEM Layer#1

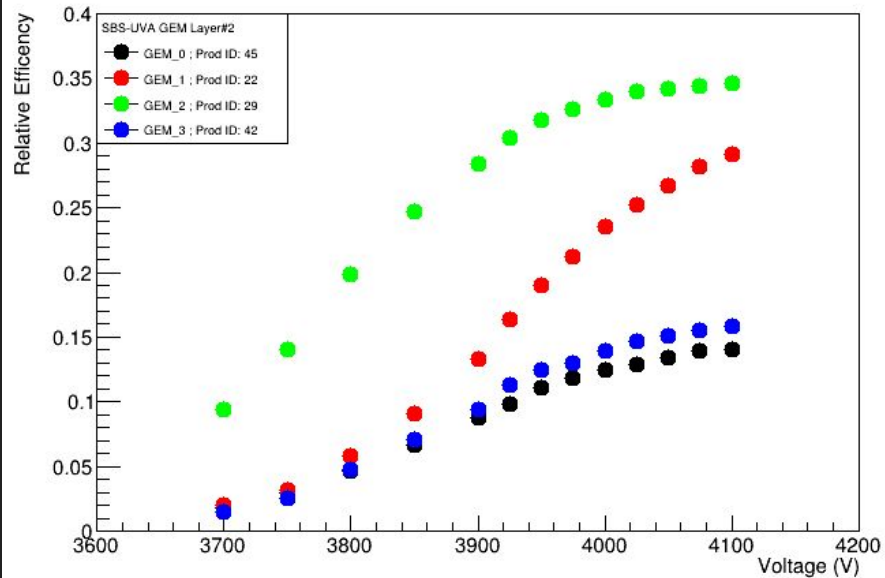


GEM Layer#1

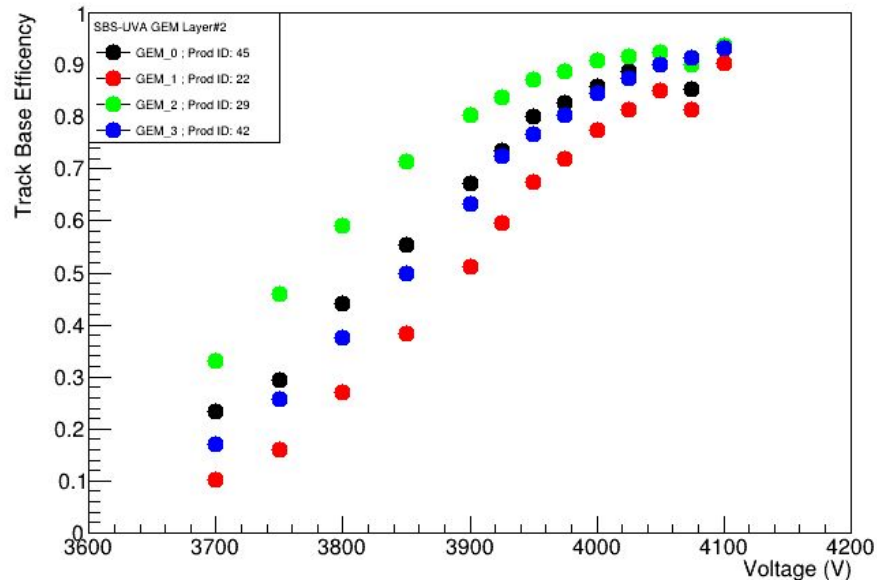


Layer#2 / 3rd Layer

GEM Layer#2

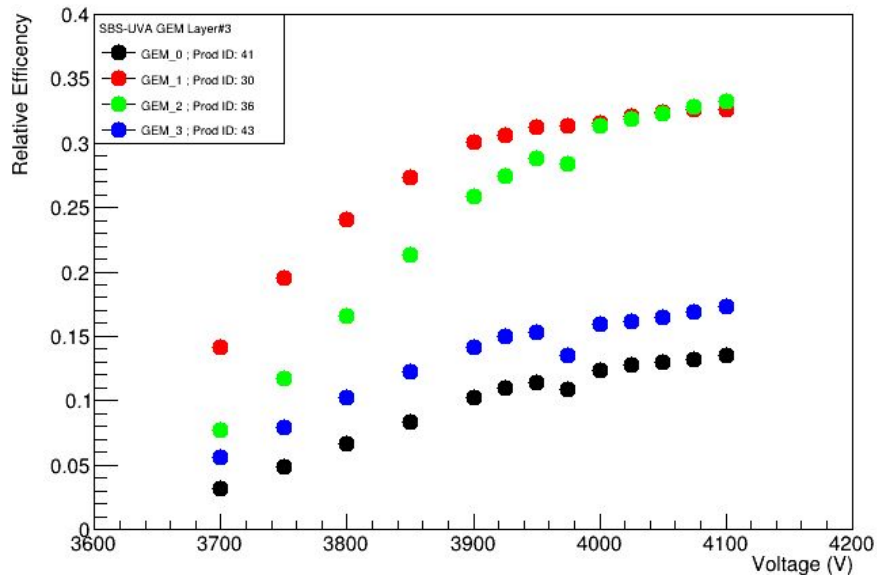


GEM Layer#2

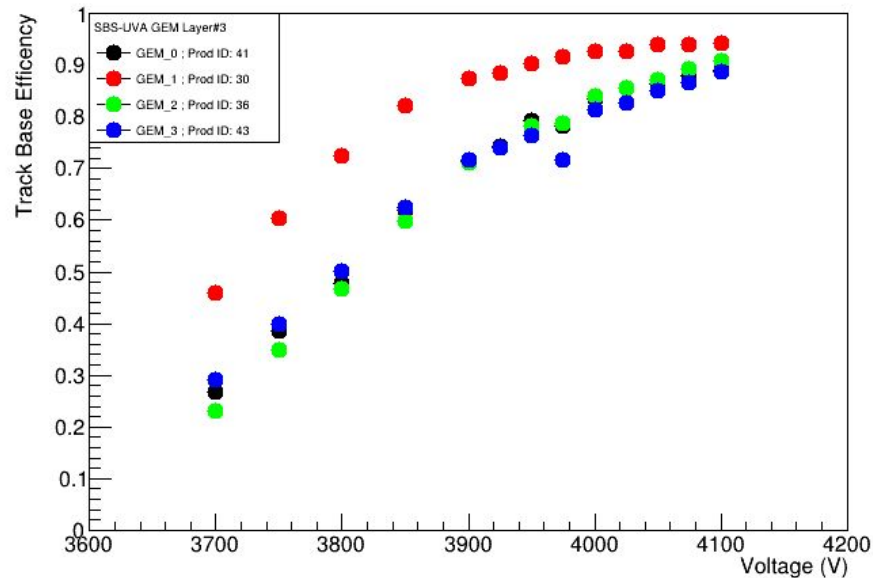


Layer#3 / 4th Layer

GEM Layer#3

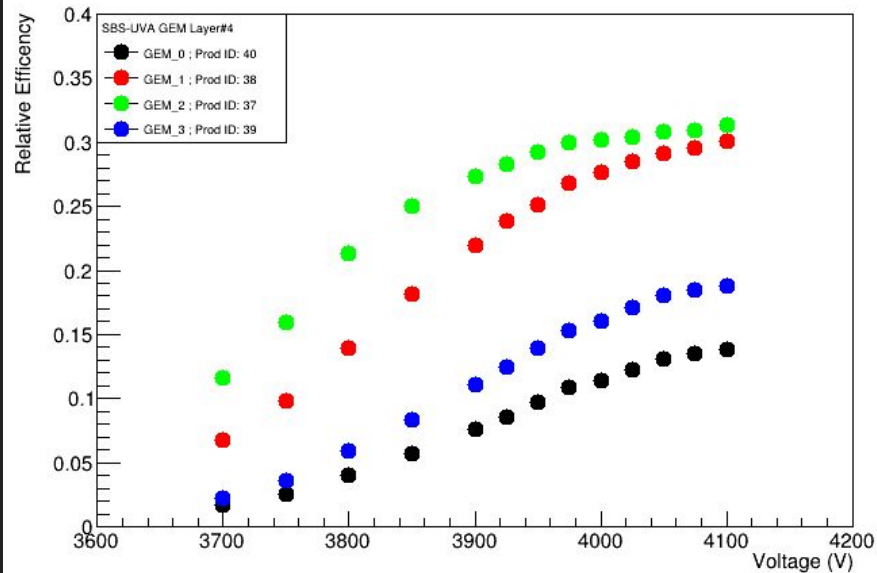


GEM Layer#3



Layer#4 / 5th Layer

GEM Layer#4



GEM Layer#4

