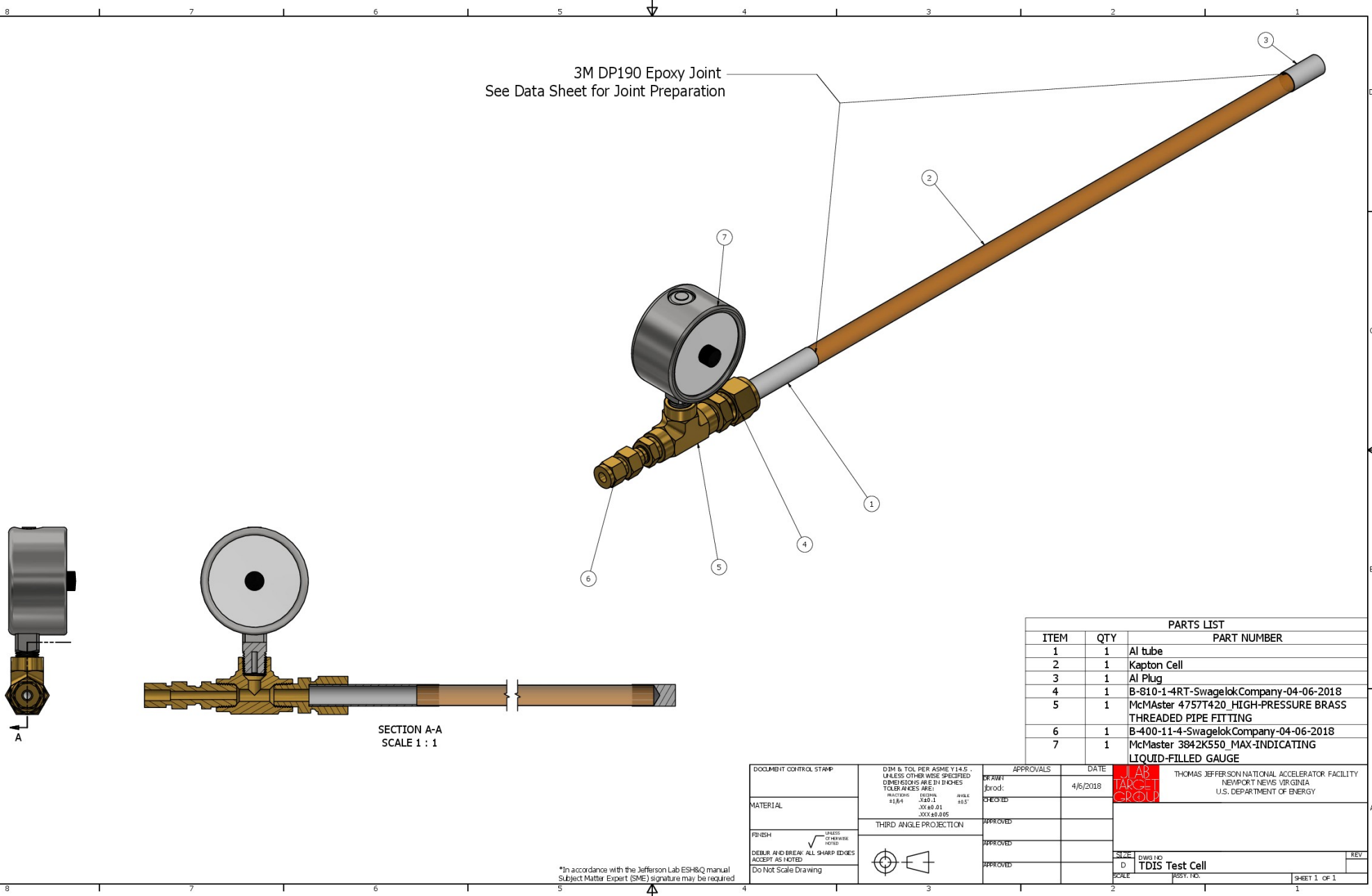


Target cell test rig – designed by James Brock

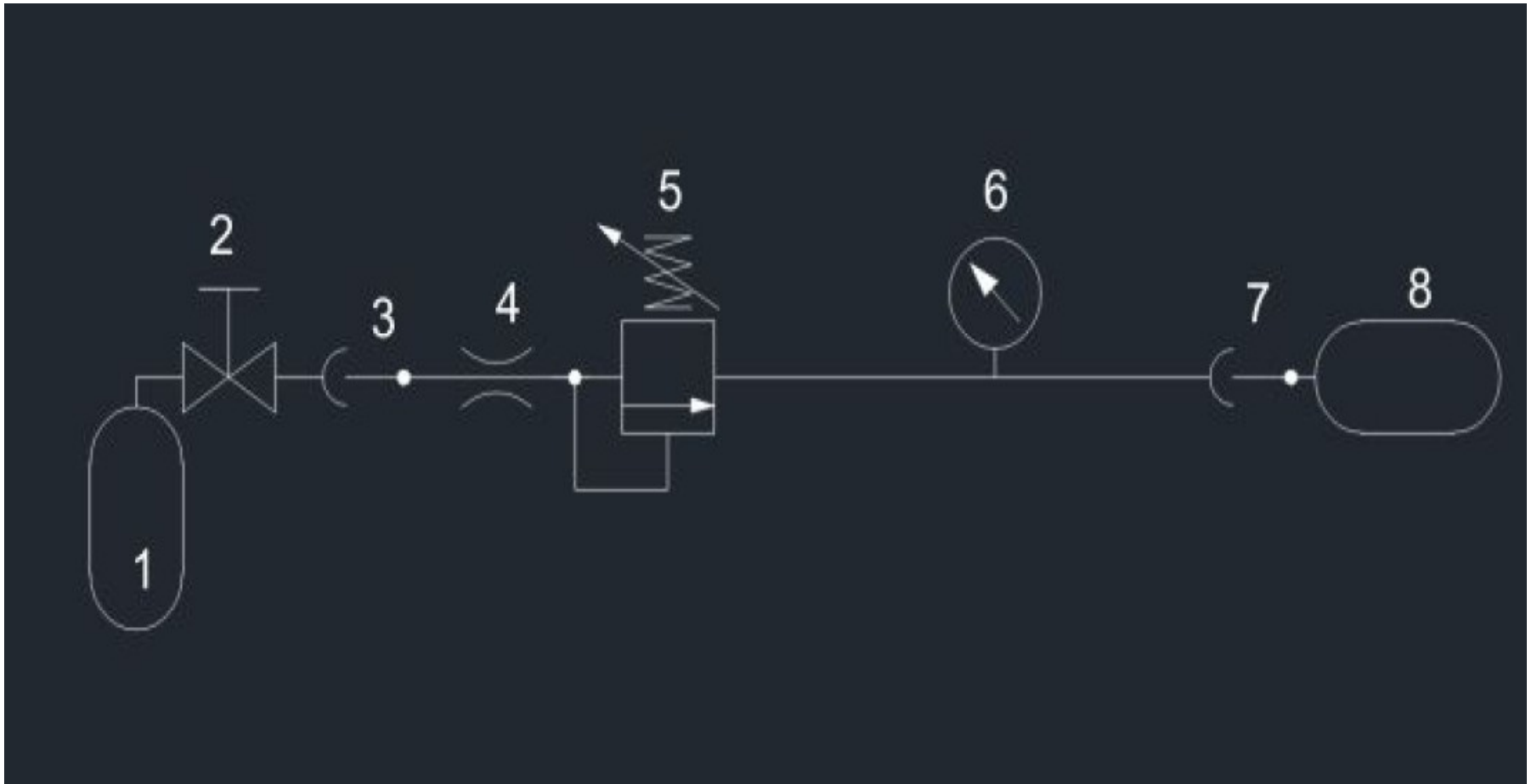


PARTS LIST		
ITEM	QTY	PART NUMBER
1	1	Al tube
2	1	Kapton Cell
3	1	Al Plug
4	1	B-810-1-4RT-SwagelokCompany-04-06-2018
5	1	McMaster 4757T420_HIGH-PRESSURE BRASS THREADED PIPE FITTING
6	1	B-400-11-4-SwagelokCompany-04-06-2018
7	1	McMaster 3842K550_MAX-INDICATING LIQUID-FILLED GAUGE

DOCUMENT CONTROL STAMP	DIM & TOL PER ASME Y14.5 - UNLESS OTHERWISE SPECIFIED DIMENSIONS ARE IN INCHES TOLERANCES ARE:	APPROVALS	DATE		THOMAS JEFFERSON NATIONAL ACCELERATOR FACILITY NEWPORT NEWS VIRGINIA U.S. DEPARTMENT OF ENERGY
	FRACTIONS DECIMAL ANGLE 1/16" .001 1/16" .XX .001 .XXX .005	DRAWN Jbrod: 4/6/2018 CHECKED APPROVED APPROVED APPROVED	THIRD ANGLE PROJECTION 		

*In accordance with the Jefferson Lab ESH&Q manual
Subject Matter Expert (SME) signature may be required

Target cell test rig – designed by James Brock



1. He Gas Cylinder
2. Cylinder Valve
3. CGA 580
4. O'Keefe Controls Flow Restrictor
5. Fine Adjustment Regulator
6. Pressure Gauge
7. Swagelok fitting
8. Test Cell

Parts are being ordered