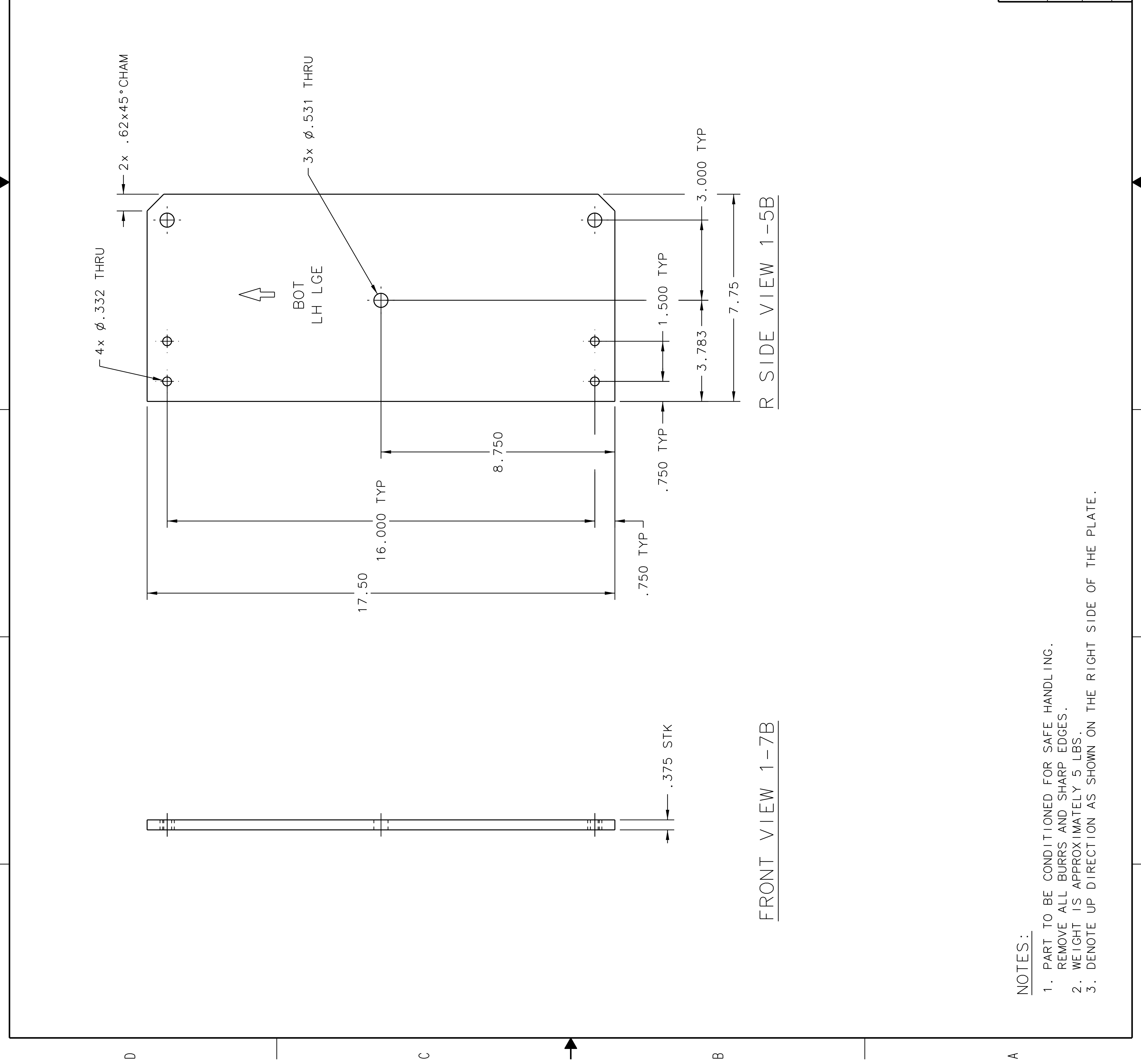


D C B A

ZONE	REV	DESCRIPTION	DATE	APPROVED



FRONT VIEW 1-7B

R SIDE VIEW 1-5B

- NOTES:
- PART TO BE CONDITIONED FOR SAFE HANDLING. REMOVE ALL BURRS AND SHARP EDGES.
 - WEIGHT IS APPROXIMATELY 5 LBS.
 - DENOTE UP DIRECTION AS SHOWN ON THE RIGHT SIDE OF THE PLATE.

DOCUMENT CONTROL STAMP	TRACKING NO.	DATE	United States Department of Energy
MATERIAL 6061-T6 ALUMINUM	APPROVALS	03 OCT 13	Jefferson Lab Thomas Jefferson National Accelerator Facility
FINISH 125 UNLESS OTHERWISE NOTED DEBURR & BREAK ALL SHARP EDGES	DRAWN S. ESP		HALL A - GENL EQUIPMENT GRINCH DETECTOR ASSY SPRT FRAME FOR REFLECTORS MOUNTING BRACKET BOT LH LGE
DO NOT SCALE DRAWING	CHECKED		SIZE DWG. NO. A00000-01-01-2703
	APPROVED		SCALE 1:2
			1 OF 1

D C B A