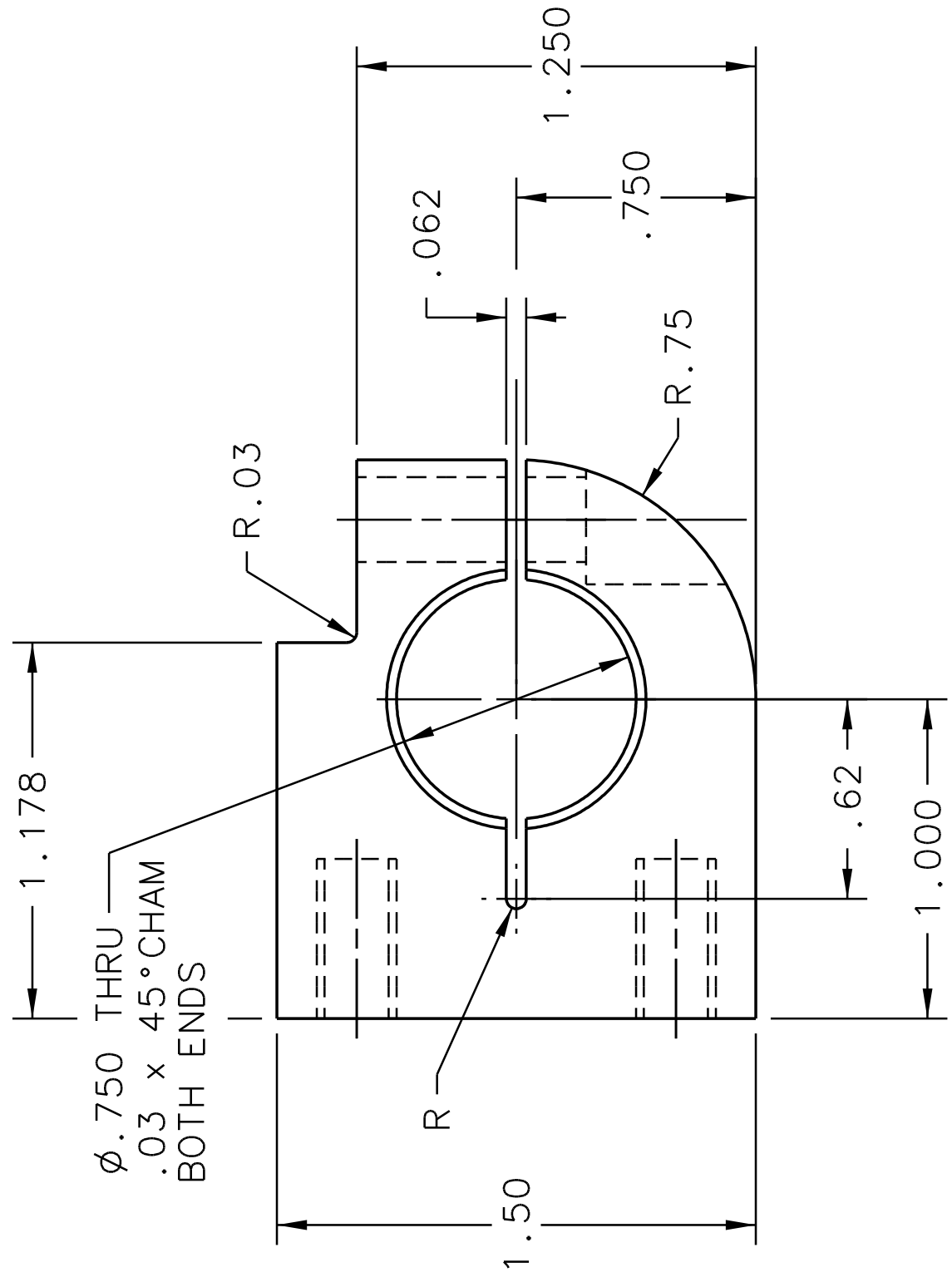
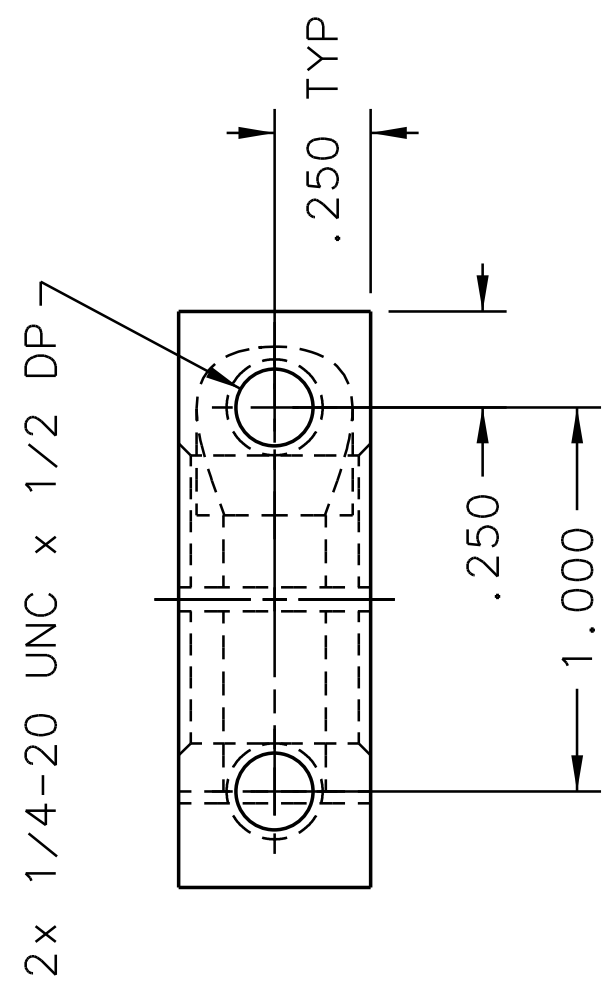


REVISION HISTORY		ZONE	REV	DESCRIPTION	DATE	APPROVED

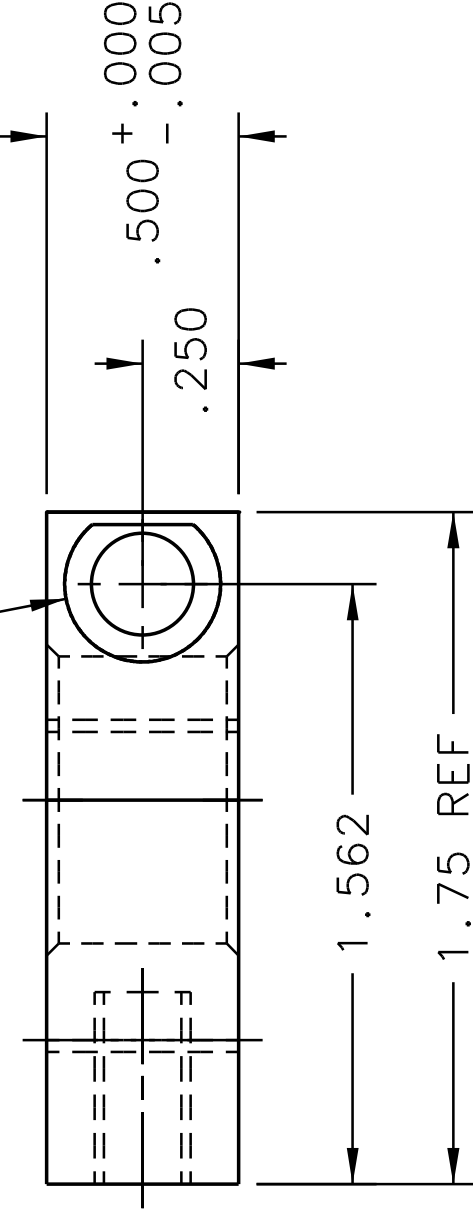


TOP VIEW 1-3C



L SIDE VIEW 1-4B

2x 1/4-20 UNC x 1/2 DP
 .266 DIA THRU ONE WALL
 .406 CBORE x .531 DEEP



FRONT VIEW 1-3B

NOTES:

- PART TO BE CONDITIONED FOR SAFE HANDLING.
 REMOVE ALL BURRS AND SHARP EDGES.

DOCUMENT CONTROL STAMP	DIM & TOL PER ASME Y14.5 UNLESS OTHERWISE SPECIFIED DIMENSIONS ARE IN INCHES TOLERANCES ARE: FRACTIONS ± N/A DECIMAL .X ± .1 .XX ± .01 .XXX ± .005 ANGLES ± .50°	TRACKING NO. N/A	United States Department of Energy	Jefferson Lab Thomas Jefferson National Accelerator Facility	Newport News Virginia
MATERIAL 6061-T6 ALUMINUM	THIRD ANGLE PROJECTION	APPROVALS DRAWN S. ESP CHECKED	Department of Energy	HALL A - GENL EQUIPMENT GRINCH DETECTOR ASSY LARGE REFLECTOR ASSY	REV. -
FINISH MACHINED SURFACES DEBURR & BREAK ALL SHARP EDGES	DO NOT SCALE DRAWING	DATE 03 OCT 13	SCALE 2:1	ONE-PIECE CLAMP-ON SHAFT COLLAR	REV. -
				SIZE (DWG. NO.) C A00000-01-01-2404	REV. -
				SCALE 2:1	SHEET 1 OF 1