

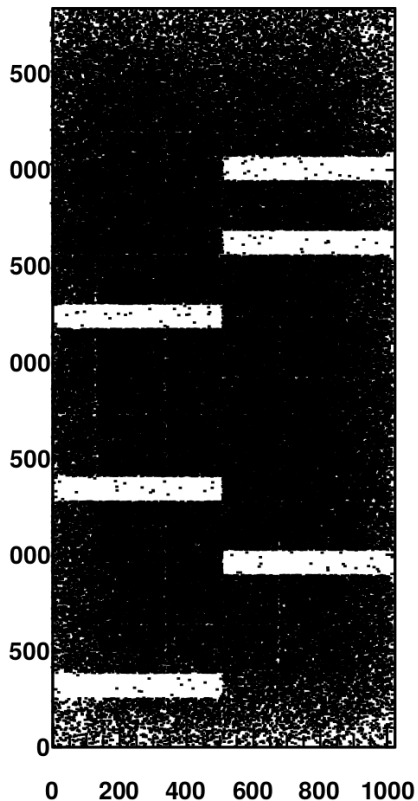
06/Sep/2019  
INFN GEM Status (short update)  
E. Cisbani

# Last 2 weeks work @JLab

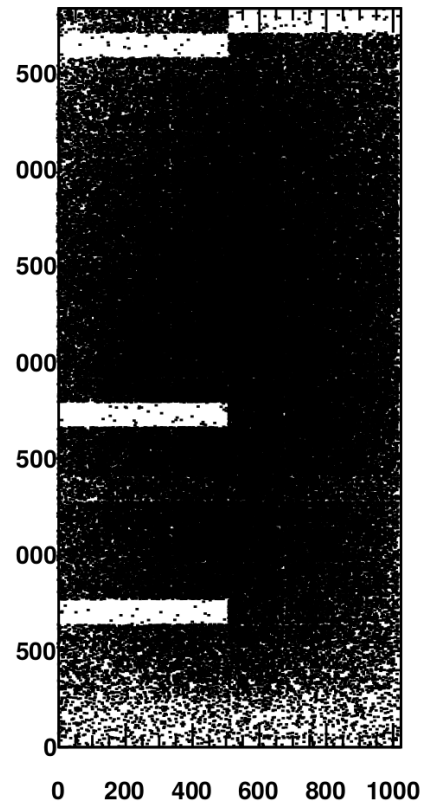
- 2 modules with shorted sectors replaced, chamber configuration improved
- Cosmic runs with different HV/gas settings
- Annoying DAQ MPD timeout finally solved (apparently) re-plugging couple of LEMO trigger cables
- No issue with HV (continuous gas flowing all the time)

Chamber	Geometrical Efficiency
J0, J2	100 %
J3	95 %
J1	90% → 93%

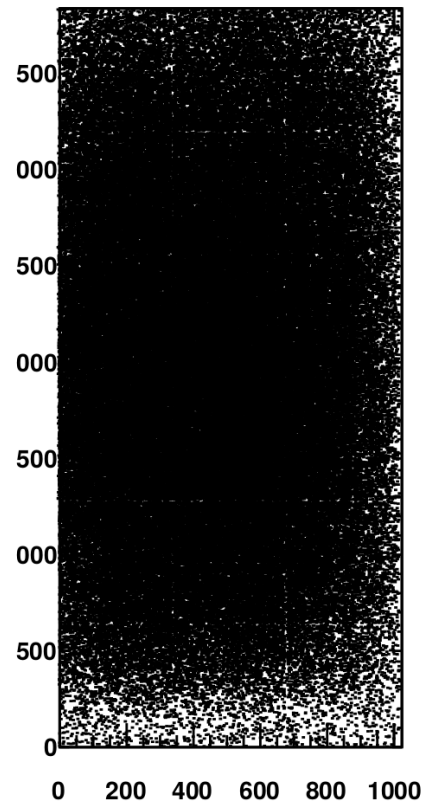
hcx: x/y Chamber J1



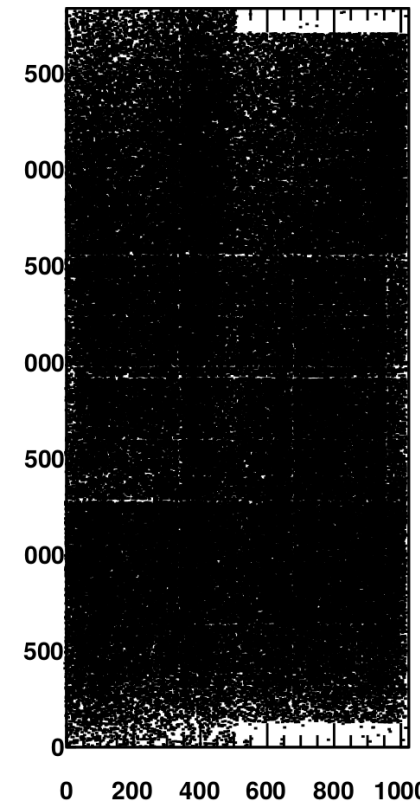
hcx: x/y Chamber J3



hcx: x/y Chamber J0



hcx: x/y Chamber J2

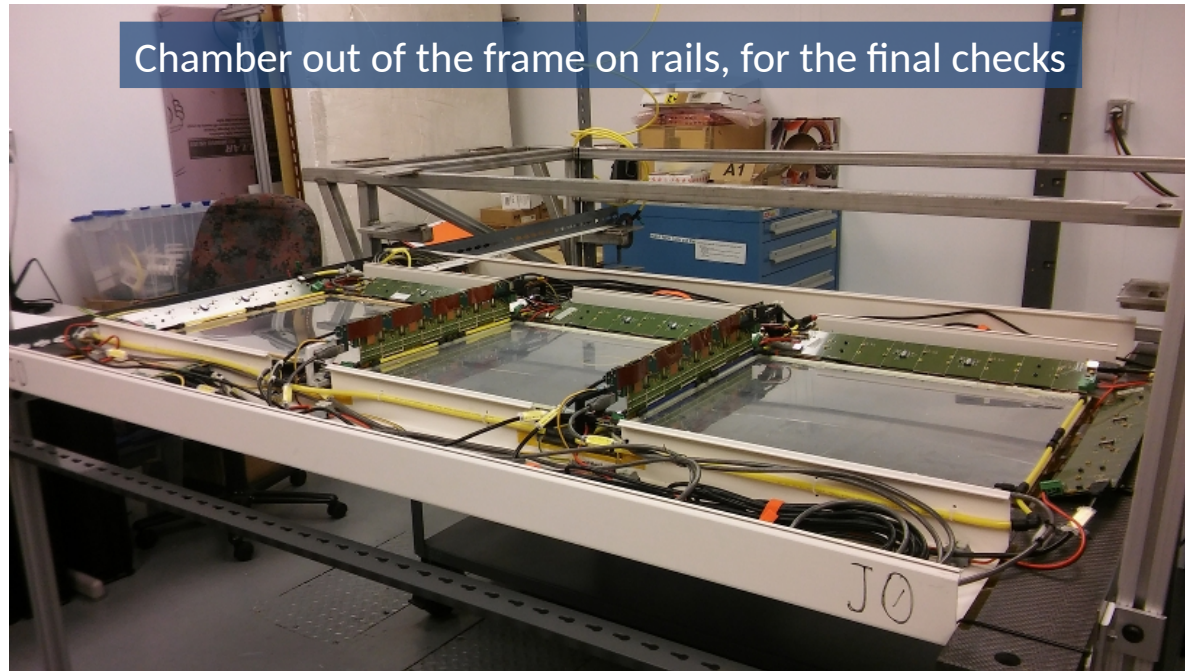


**4200 V / 0.6 SCFH**

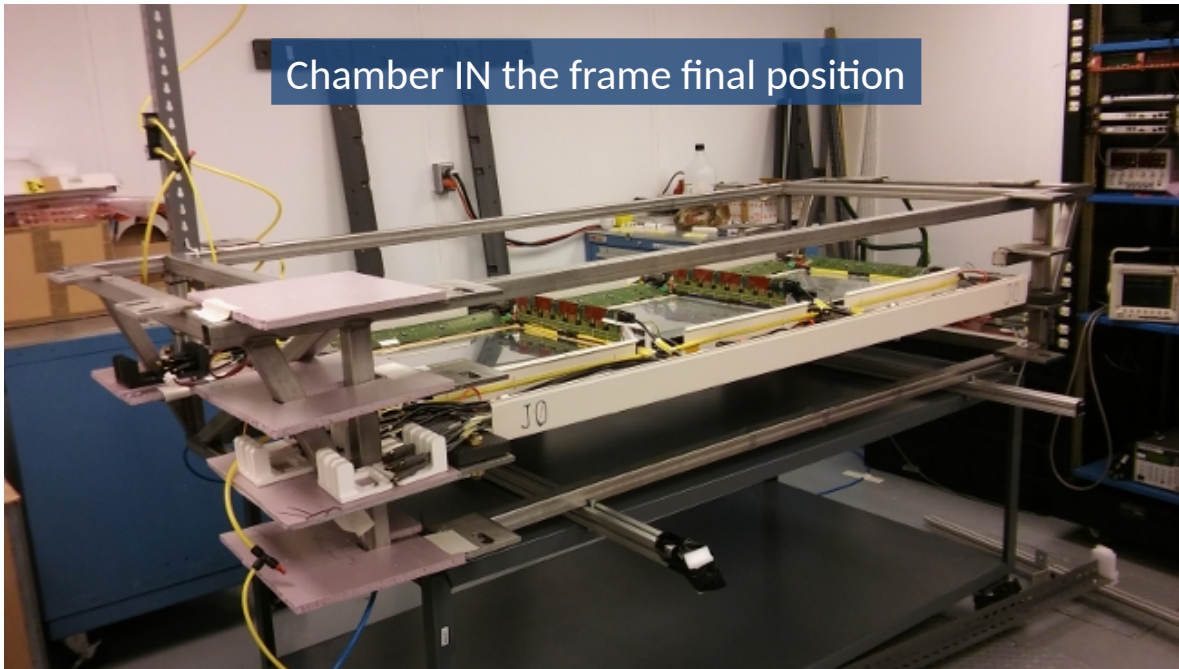
Sep 5th

# First Chamber loaded in BB frame/Sep 2019

- Implemented sliding system to load the chambers in the **limited and critical space** of the BigBite Frame
- Tested loading on the first chamber; likely solved all relevant issues, so far



Chamber IN the frame final position



- Designed the patch panel (pink in left picture) for the cable ends, gas and power supply of the electronics to easy installation

**Need to define, within the collaboration, how to proceed**

## Next ~10 days plan

- Complete module rearrangement to optimize active area (move shorted sectors on top/bot of the chamber, whenever possible); check noisy cards and replace
- Test “final” configuration with cosmics
- Start assembling a new chamber (J4)
- Move one chamber (J1) from cosmic tower into the BB frame
- Possibly start testing (J4) into the cosmic tower