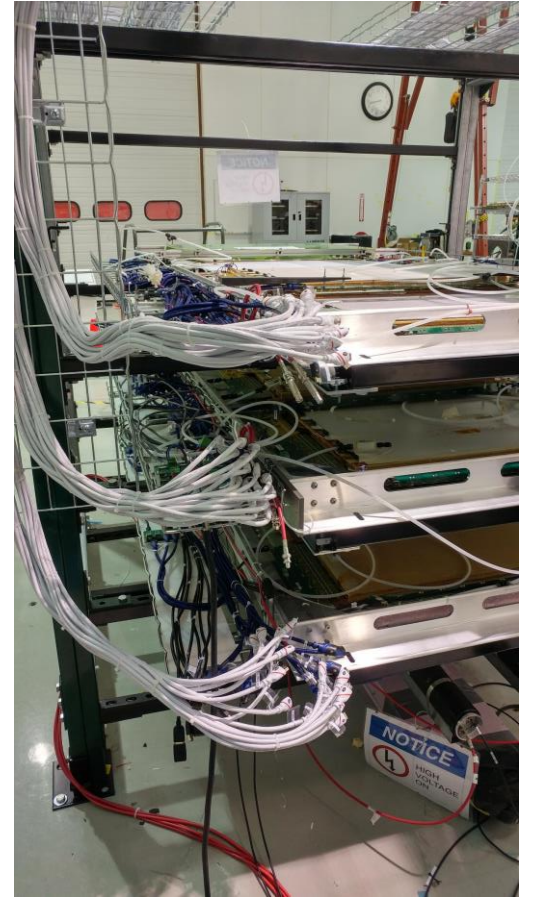
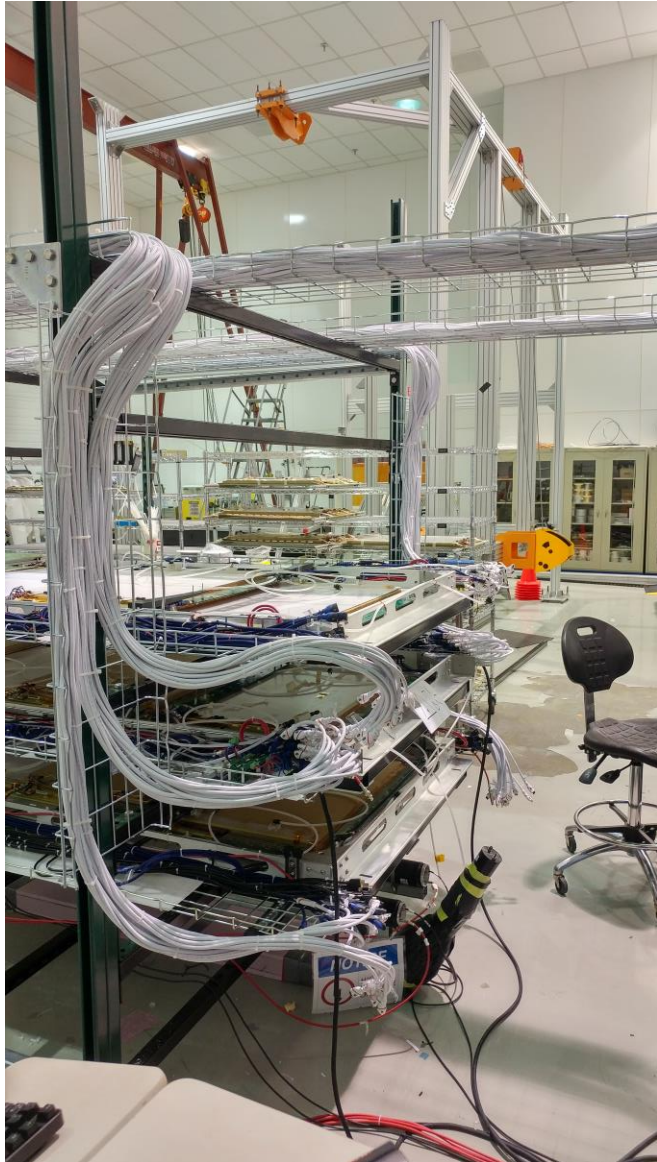
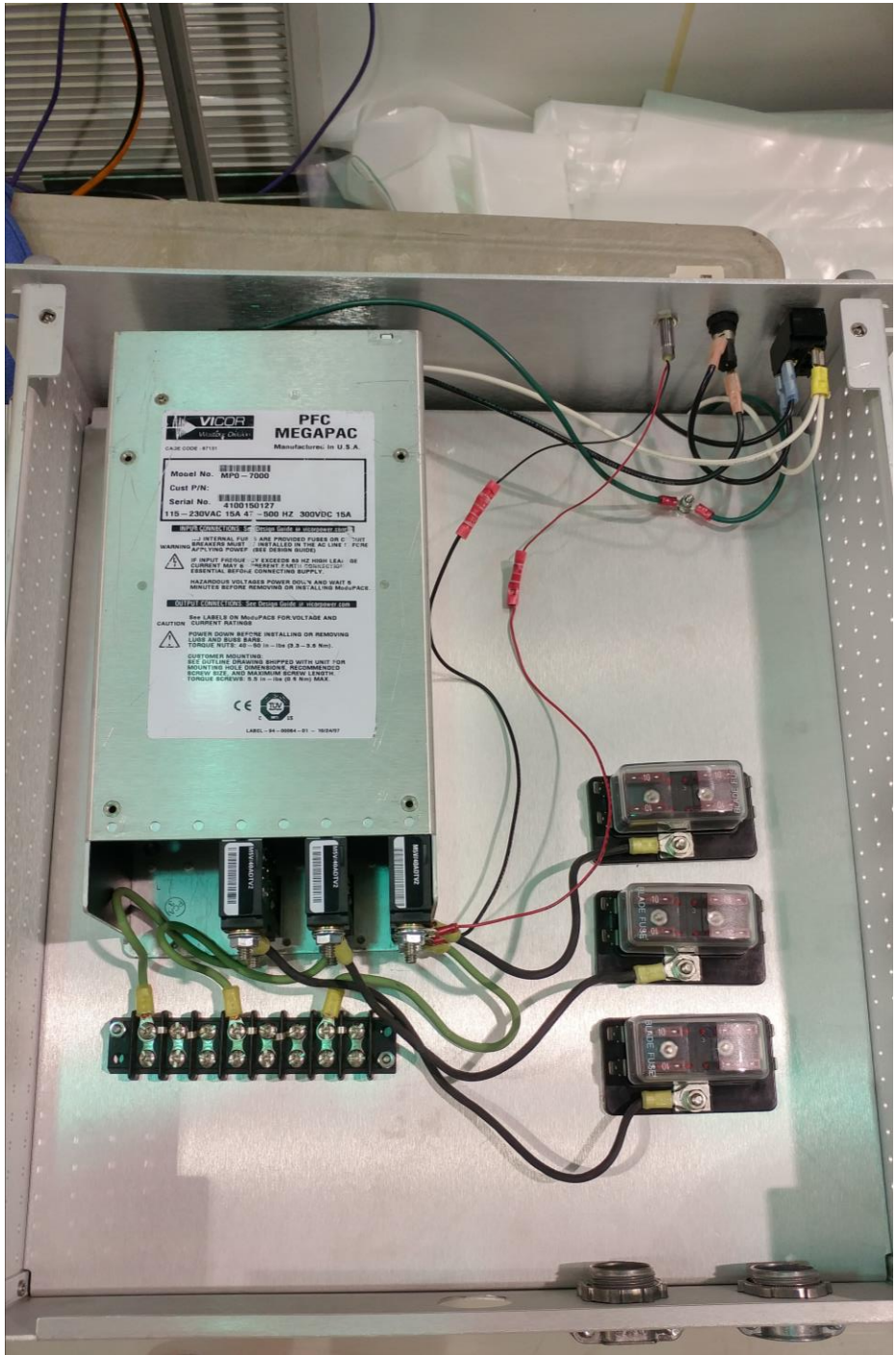


# SBS GEM Commissioning meeting 08/15/2019

Status of the EEL clean room activities carried out over the last week after the SBS collaboratin meeting.

- We installed cable trays to route the long 10 m HDMI cables from cosmic strand to MPDs with the help of the Chuck.
- Tested and labelled all the 10 m cables and installed them.
- Thir tested and confirmed that the APV cards of the layer #2 are working properly after connecting the 10 m long HDMI cables thus making that layer ready for cosmic tests.
- The preparation of the low voltage power distribution systems for layer #1 and #3 are on prgress and we are awaiting the delivery of some connectors needed to complete the job. After that, Thir will be able to test those two layers (Hopefully within today or tomorrow) which will make all three layers ready for cosmic tests with Brian.
- Acquired the low voltage power supply from Bill.





**PFC MEGAPAC**  
Manufacturer in U.S.A.

Model No. MPD-7000  
Serial No. 4100150127  
115-230VAC 15A 47-900 HZ 300VDC 10A

**CAUTION**  
INTERNAL FUSE IS PROVIDED FUSES IN A UNIT MUST BE REPAIRED ASBESTOS IS RELEASED IN THE AC LINE. FUSE WARNING APPLYING POWER (SEE DESIGN GUIDE)

**HAZARDOUS VOLTAGES POWER OFF AND WAIT 5 MINUTES BEFORE REPAIRING OR THE ALL-USB MOUNTING**

**CAUTION**  
SEE LABELS ON MOUNTING FOR VOLTAGE AND CURRENT RATINGS  
POWER OFF BEFORE INSTALLING OR REMOVING LINES AND BUS BARS  
TONGUE WIDTH: 47-90 (3.3-3.6 No.)

**CUSTOMER INSTALLING**  
SEE OUTLINE DRAWINGS SHIPPED WITH UNIT FOR MOUNTING HOLE DIMENSIONS, RECOMMENDED TONGUE FIT AND MAXIMUM CABLE LENGTH  
TONGUE WIDTH: 2.5 (3.3-3.6 IN 4 No.) MAX

CE  
C  
E

LAB-1-04-0004-01-100407

Terminal block with wires connected to the PFC MEGAPAC unit.

Three fuses mounted on a metal strip, connected to the terminal block.