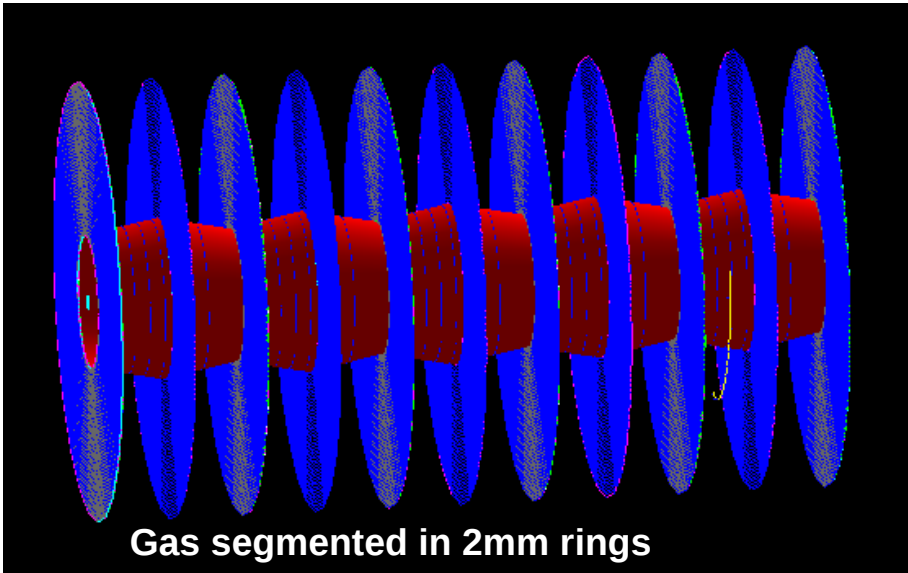
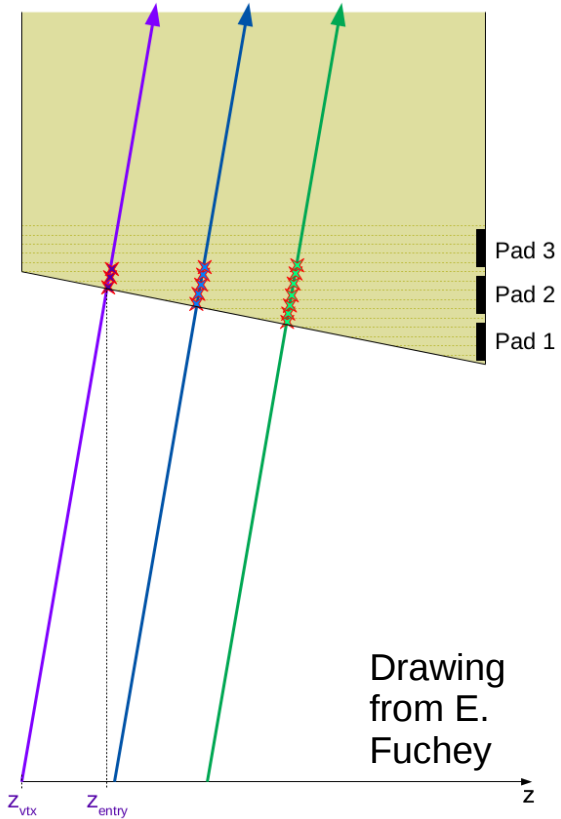
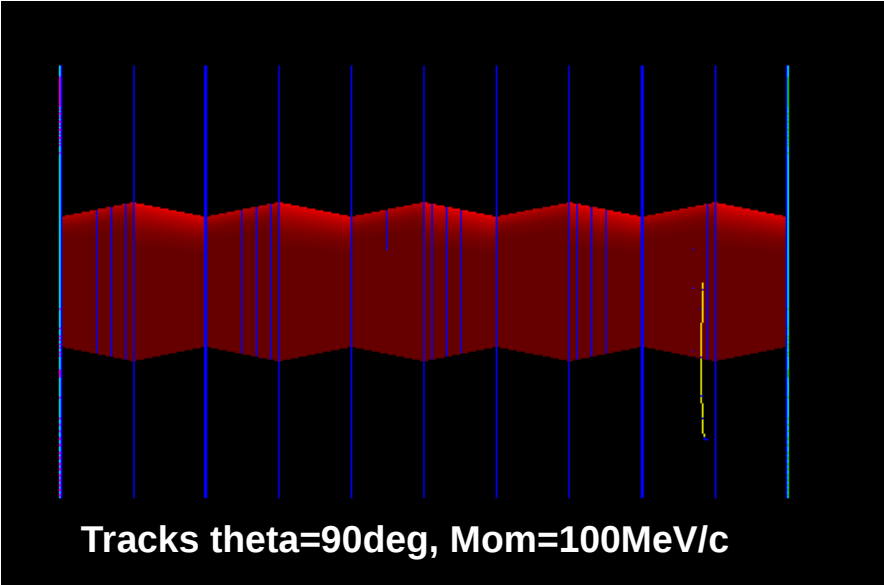
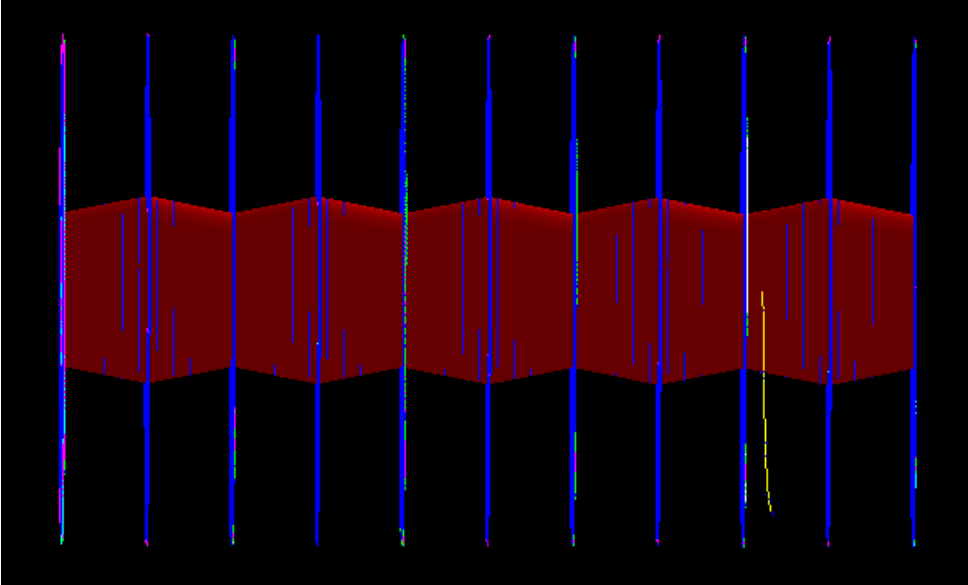
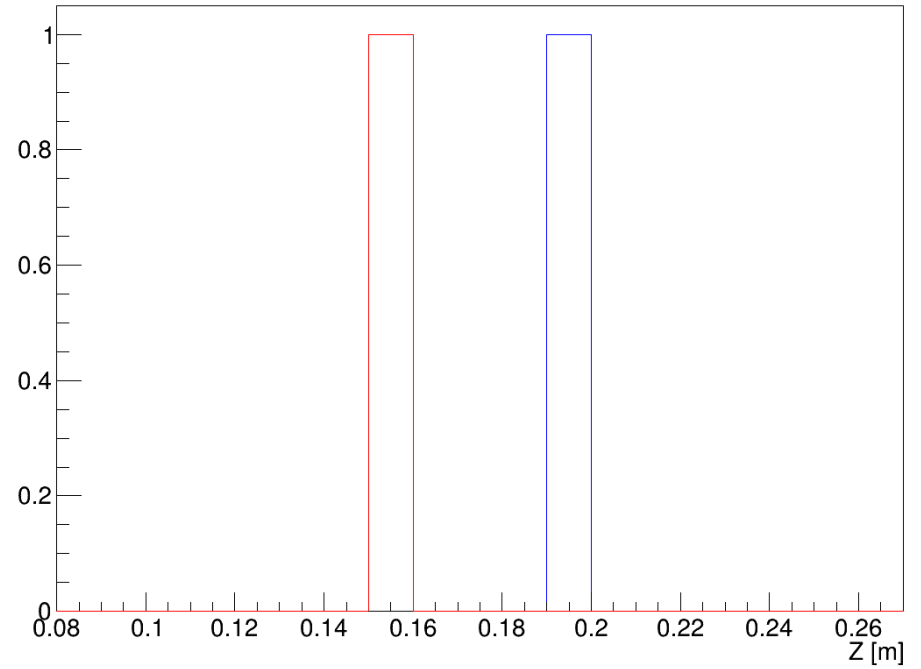
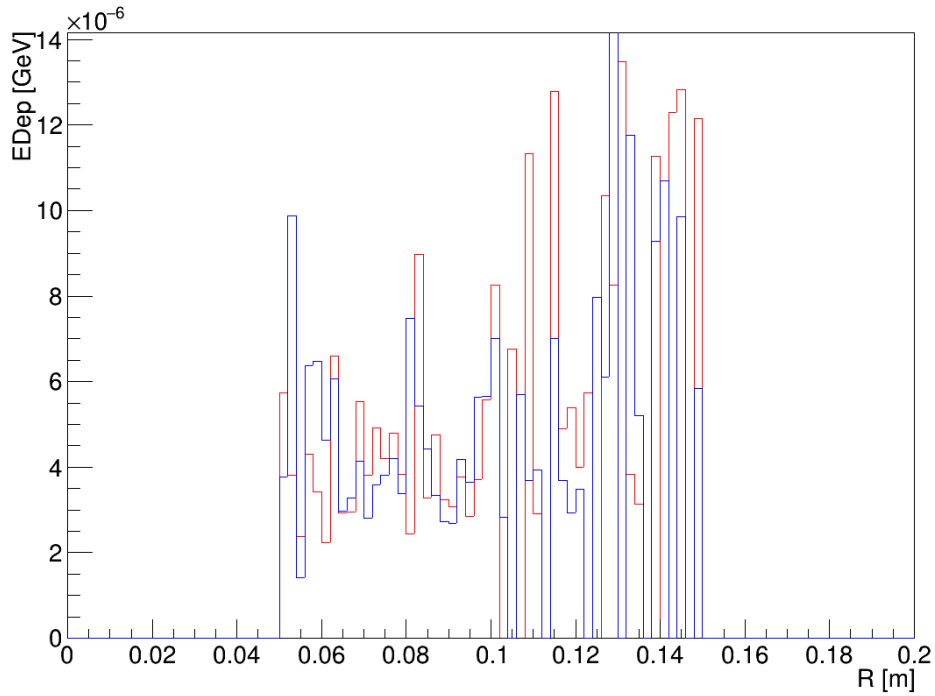
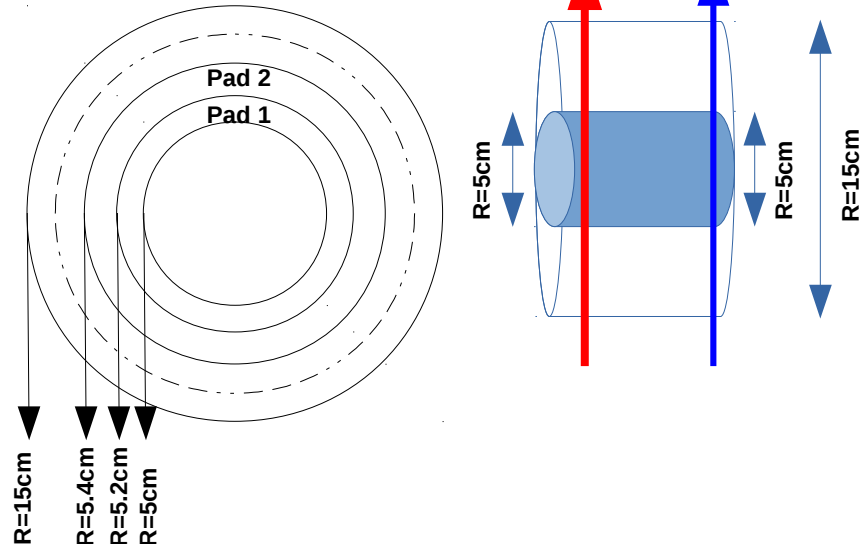


Conical Shape – Z Study



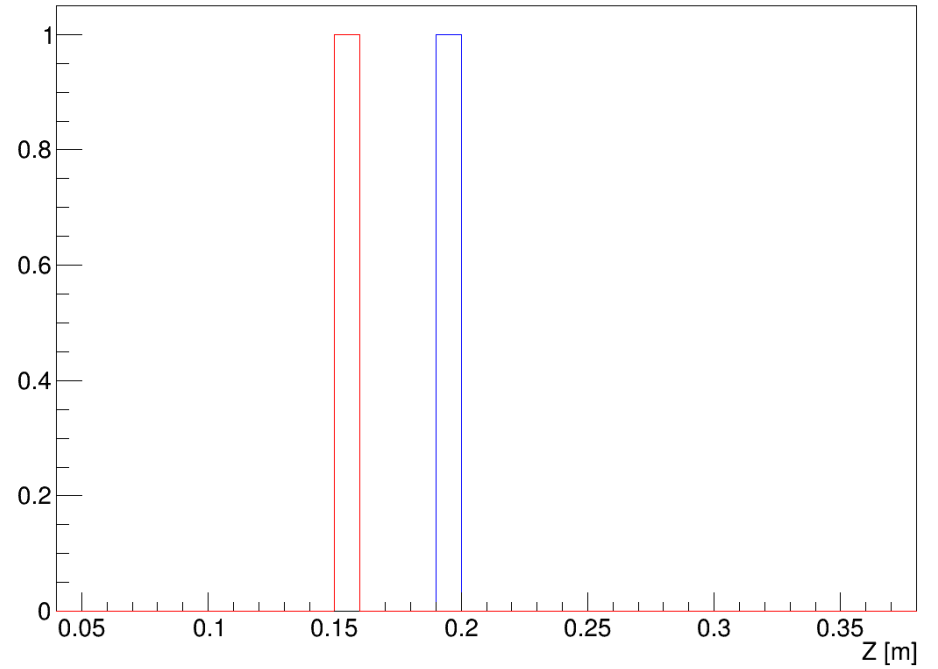
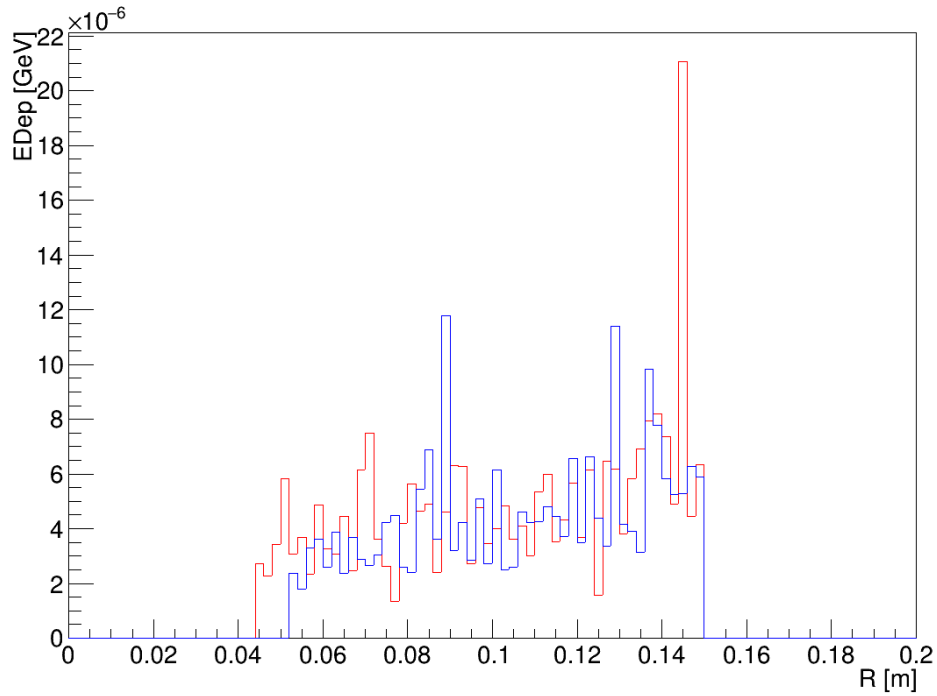
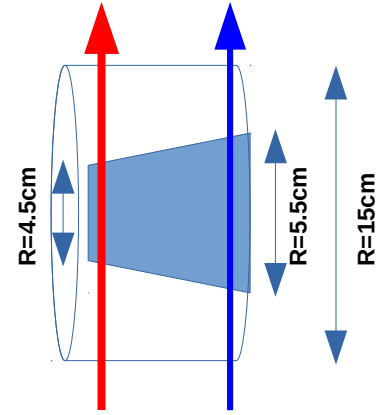
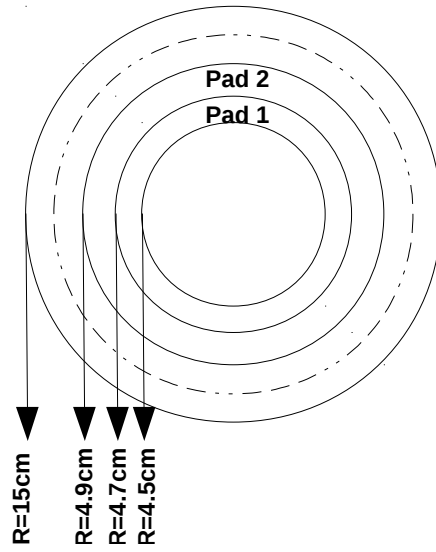
Edep V R Non Conical Shape

100MeV/c
Mag Field
On



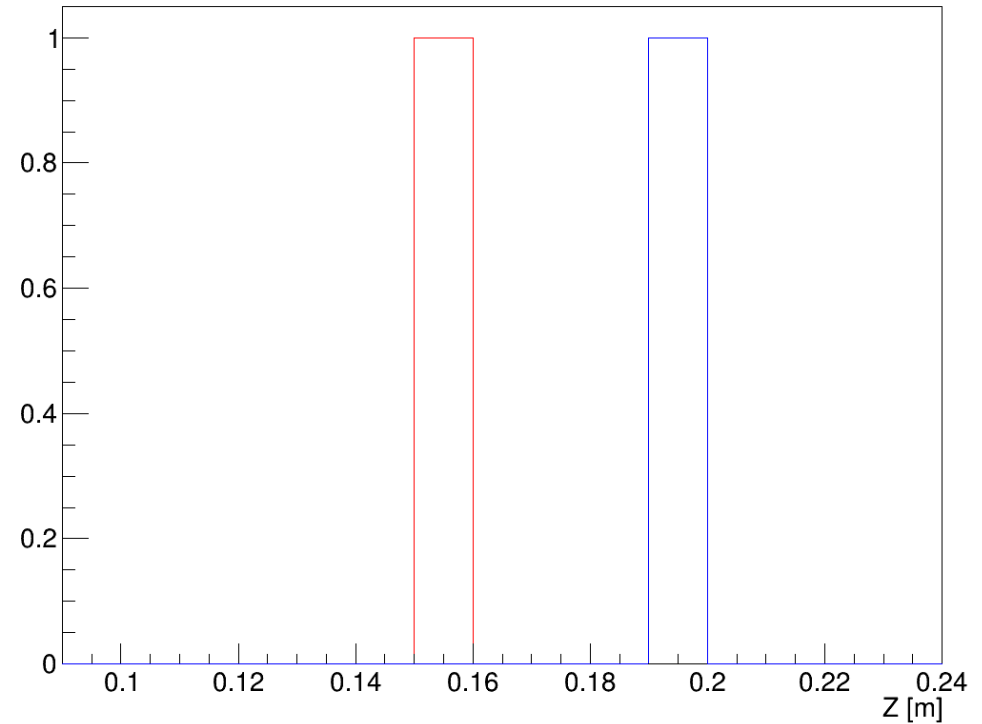
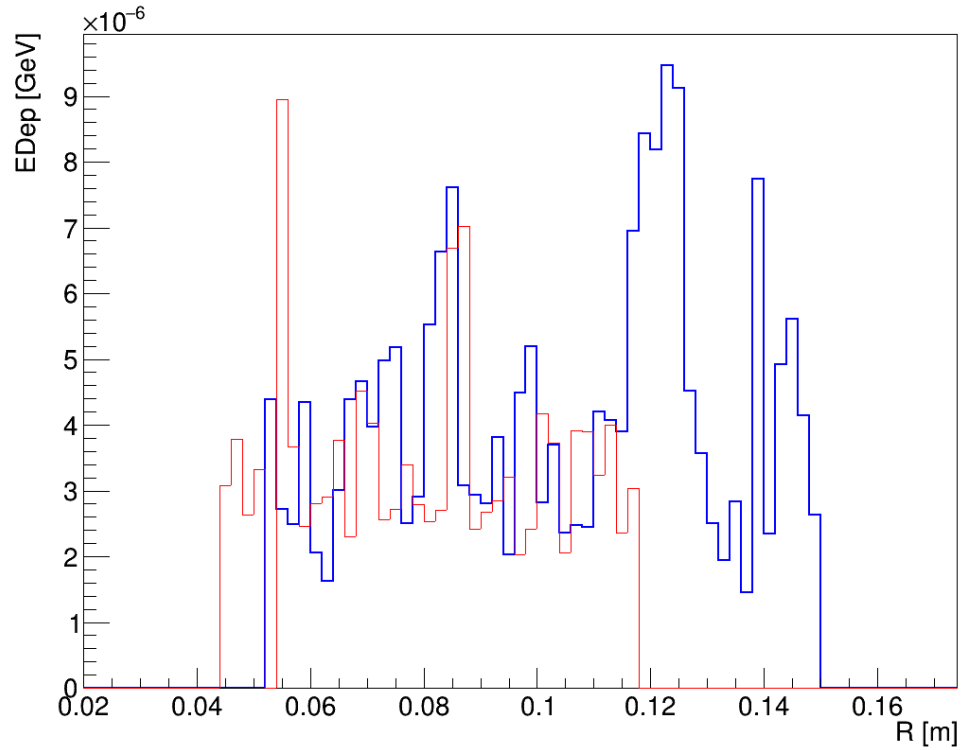
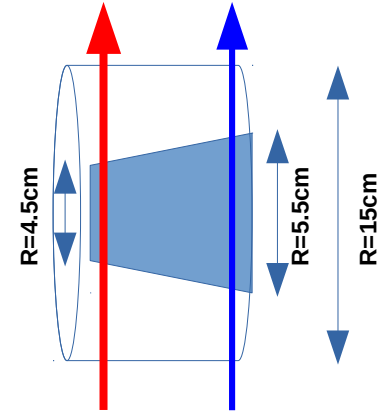
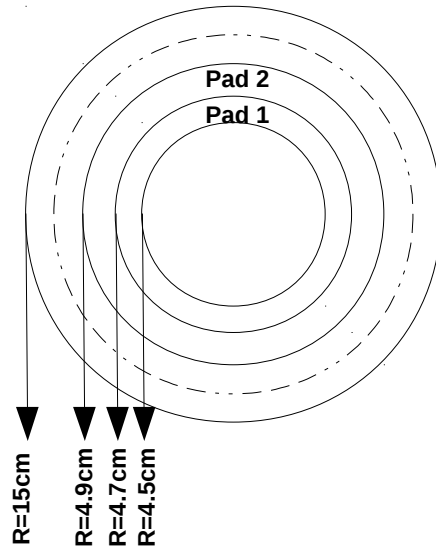
Edep V R Conical Shape

100MeV/c
Mag Field
On



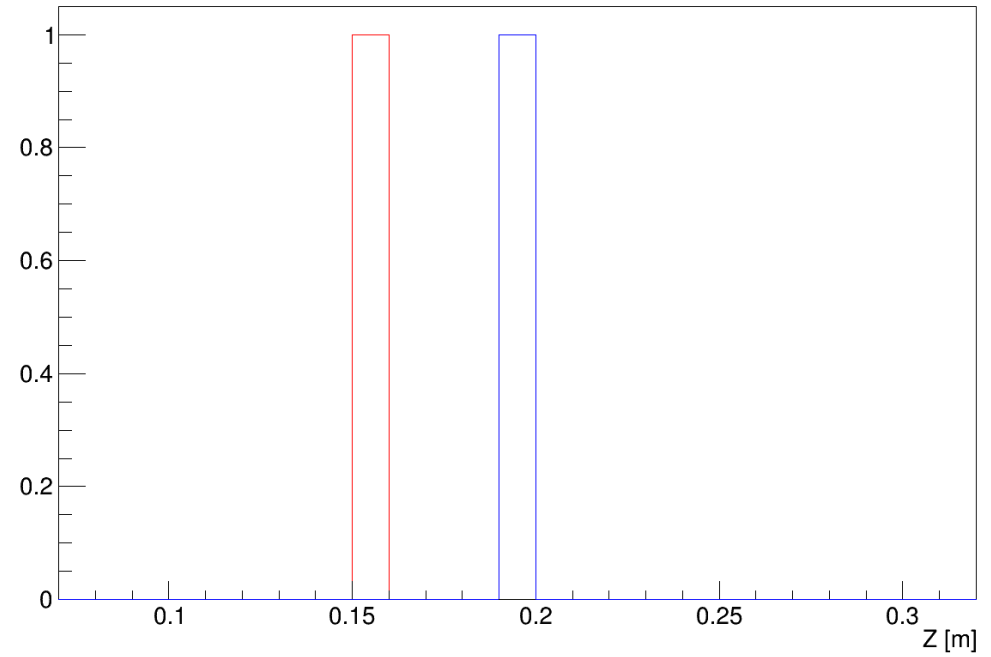
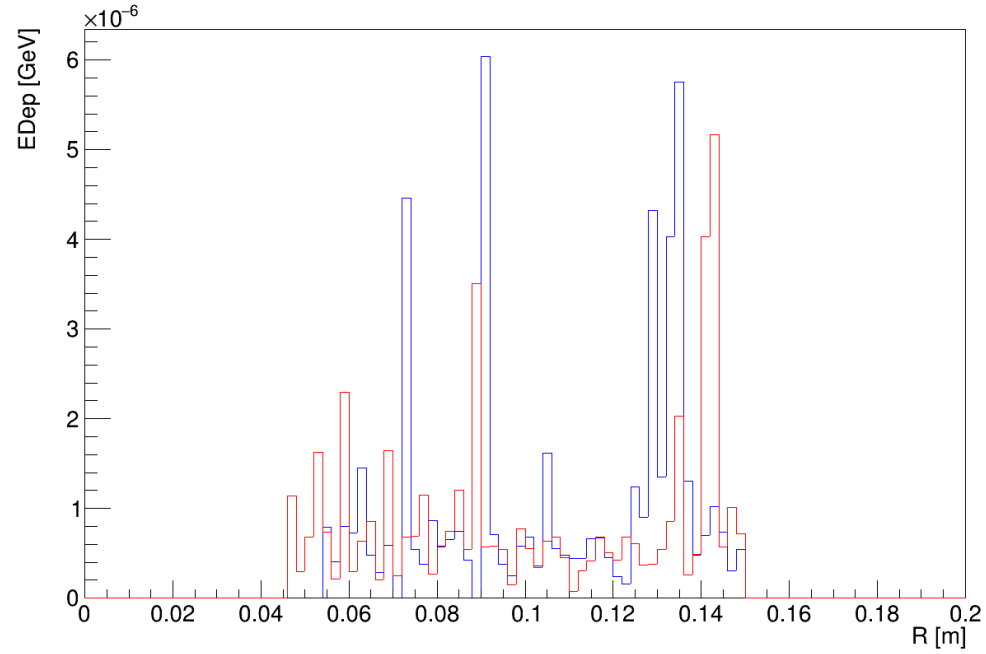
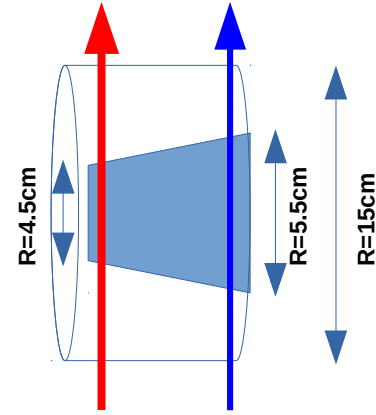
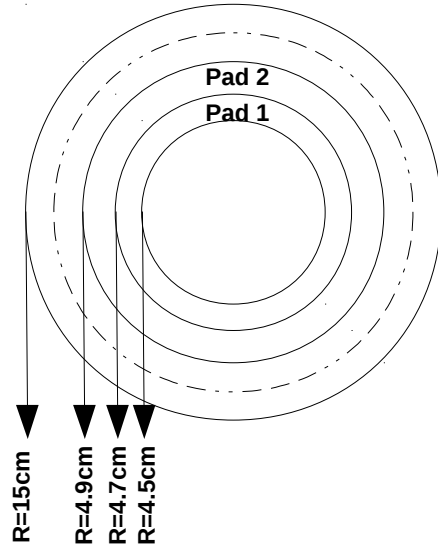
Edep V R Conical Shape

100MeV/c
Mag Field
Off



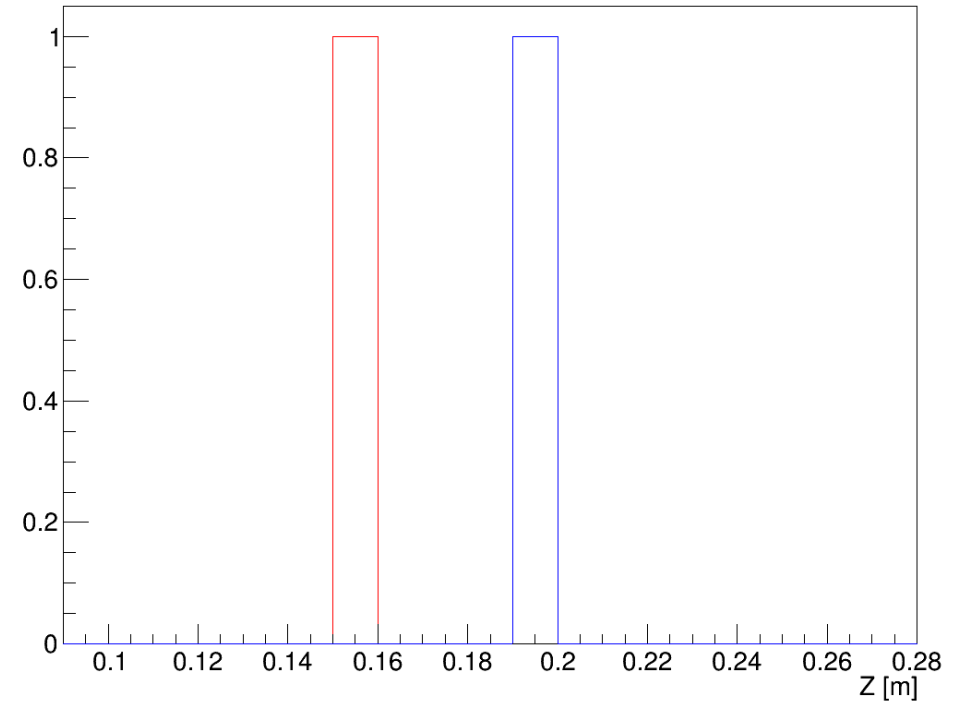
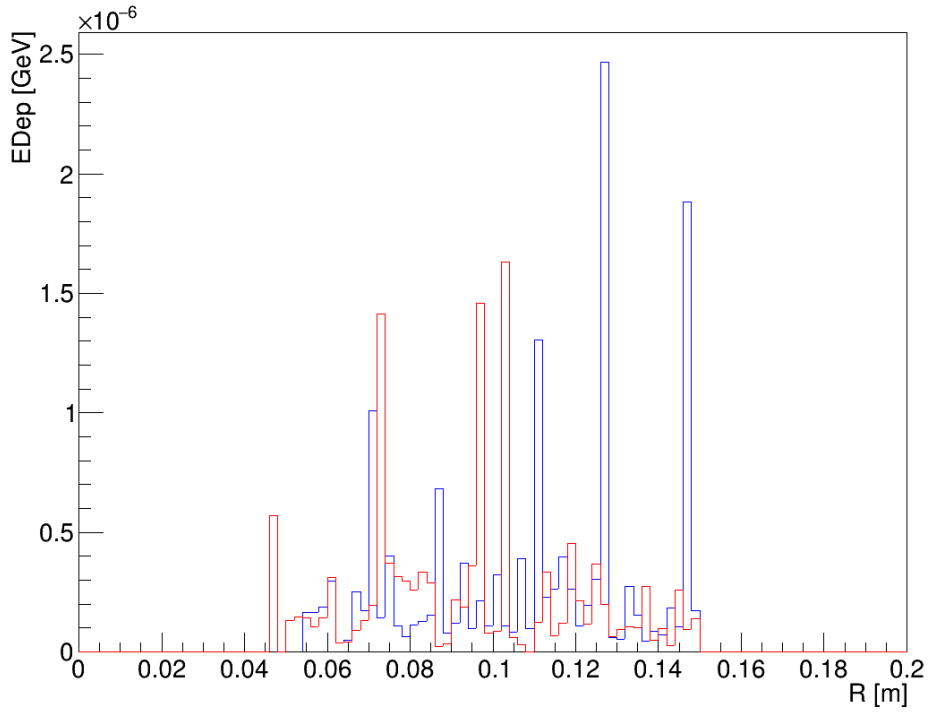
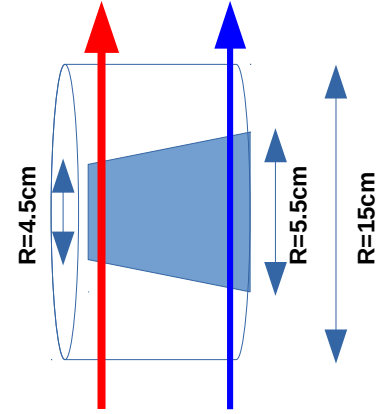
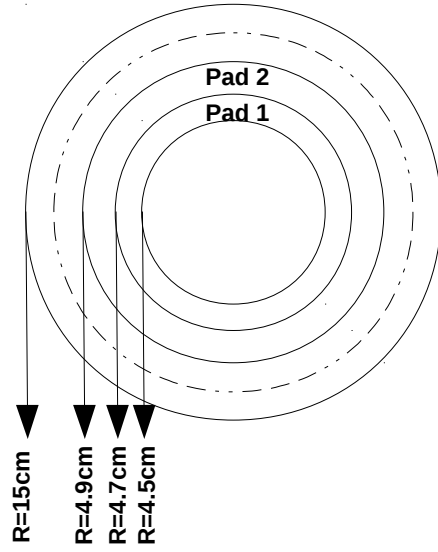
Edep V R Conical Shape

250MeV/c
Mag Field
Off



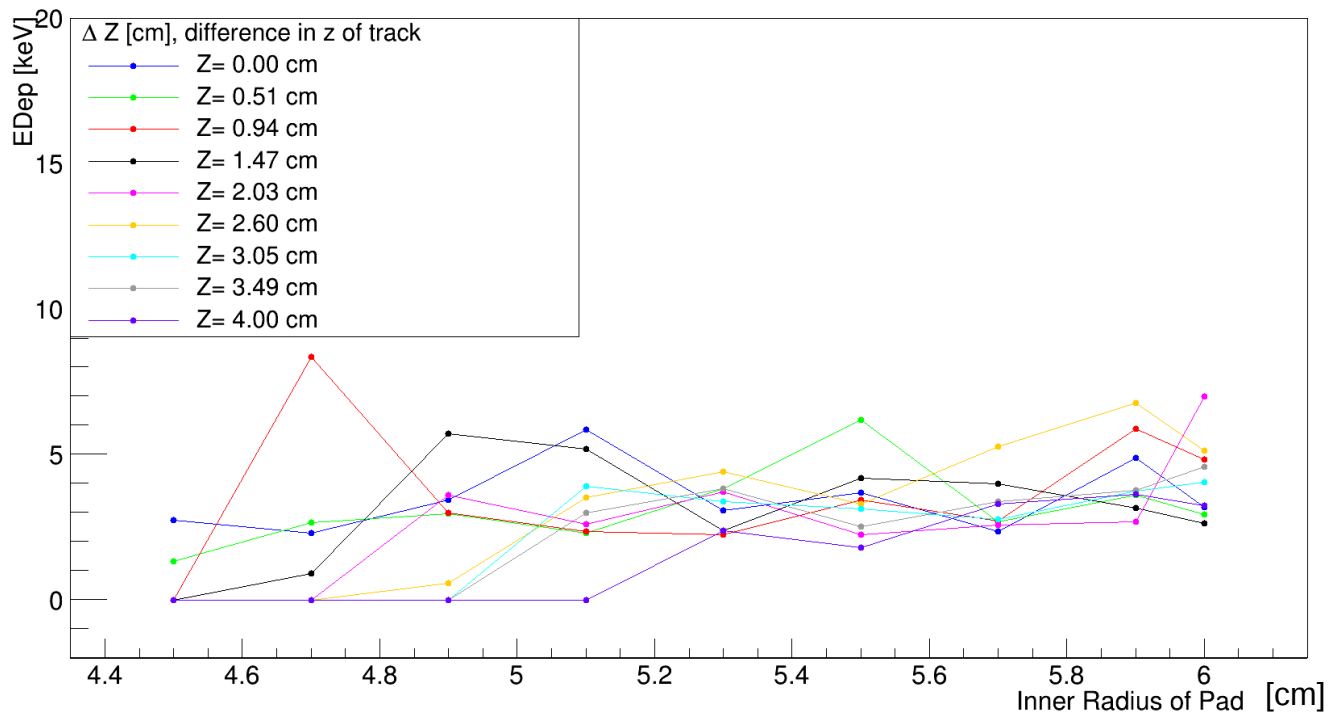
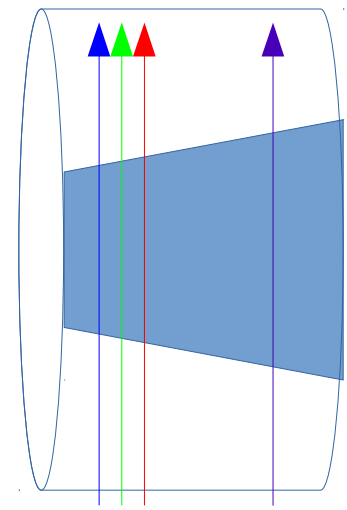
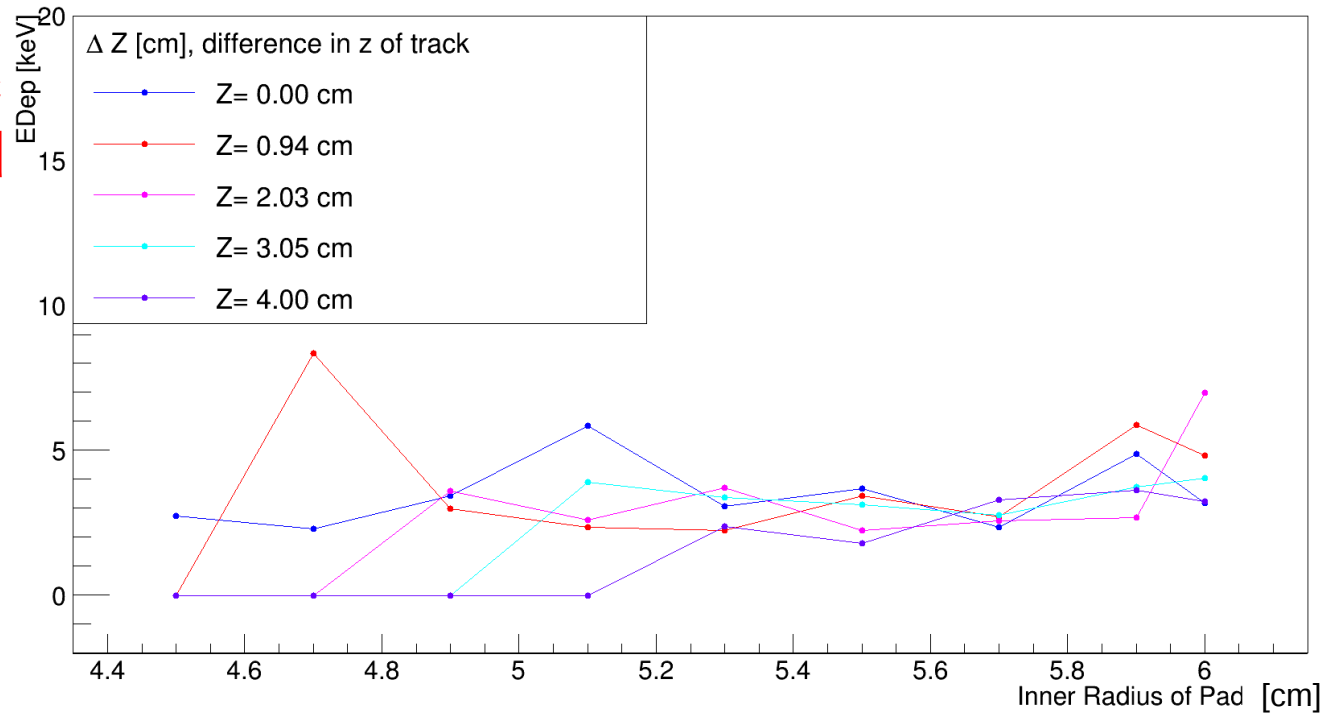
Edep V R Conical Shape

400MeV/c
Mag Field
Off



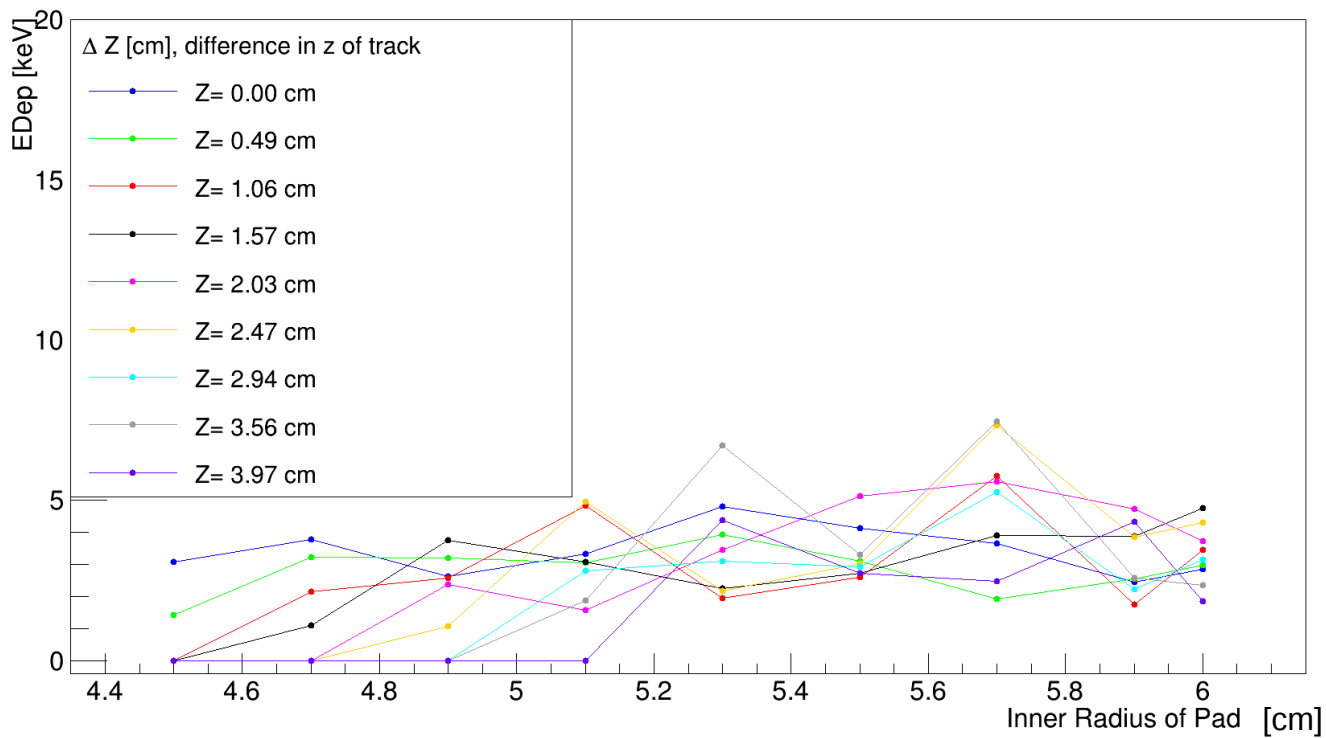
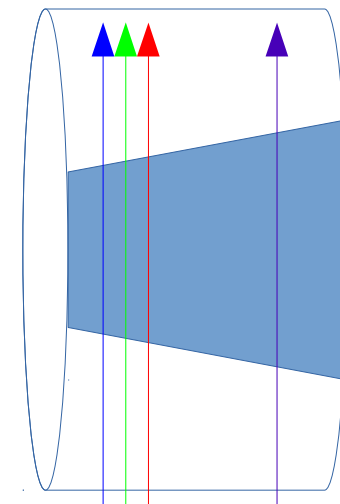
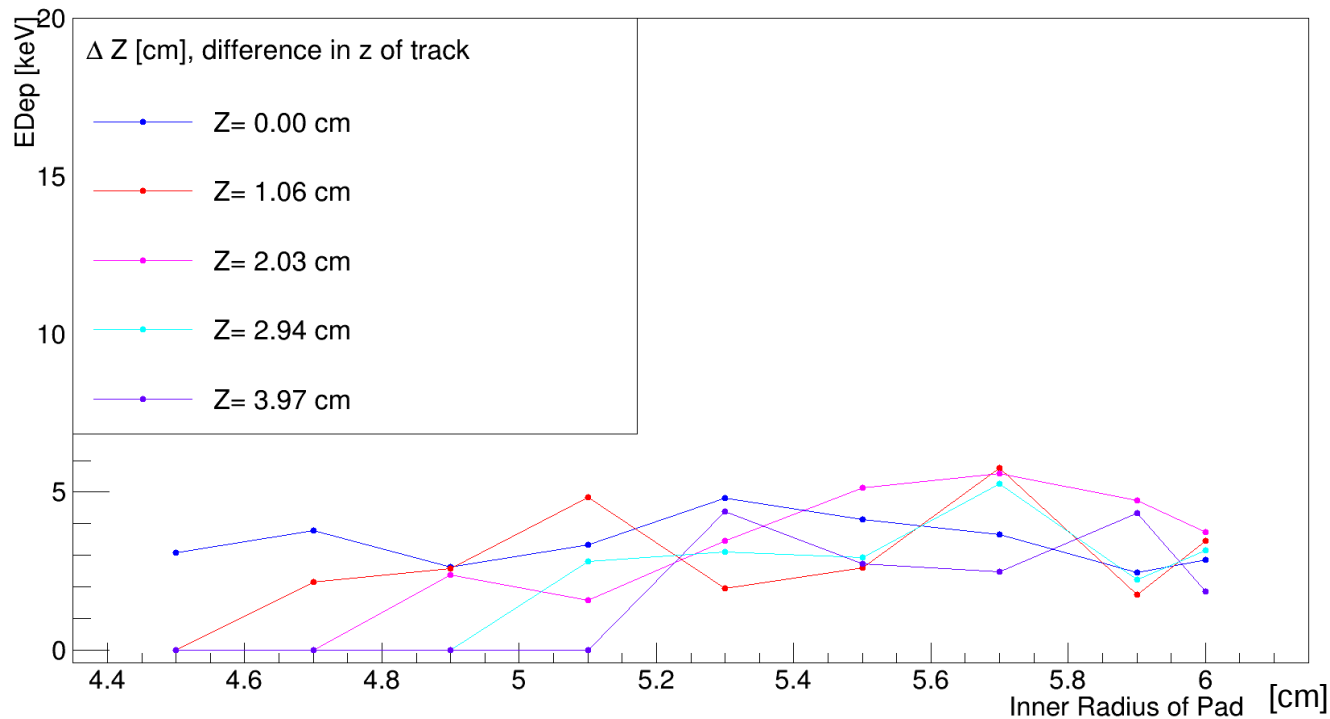
**100MeV/c
Mag Field
On**

Edep in Pads as a Function of Track Z



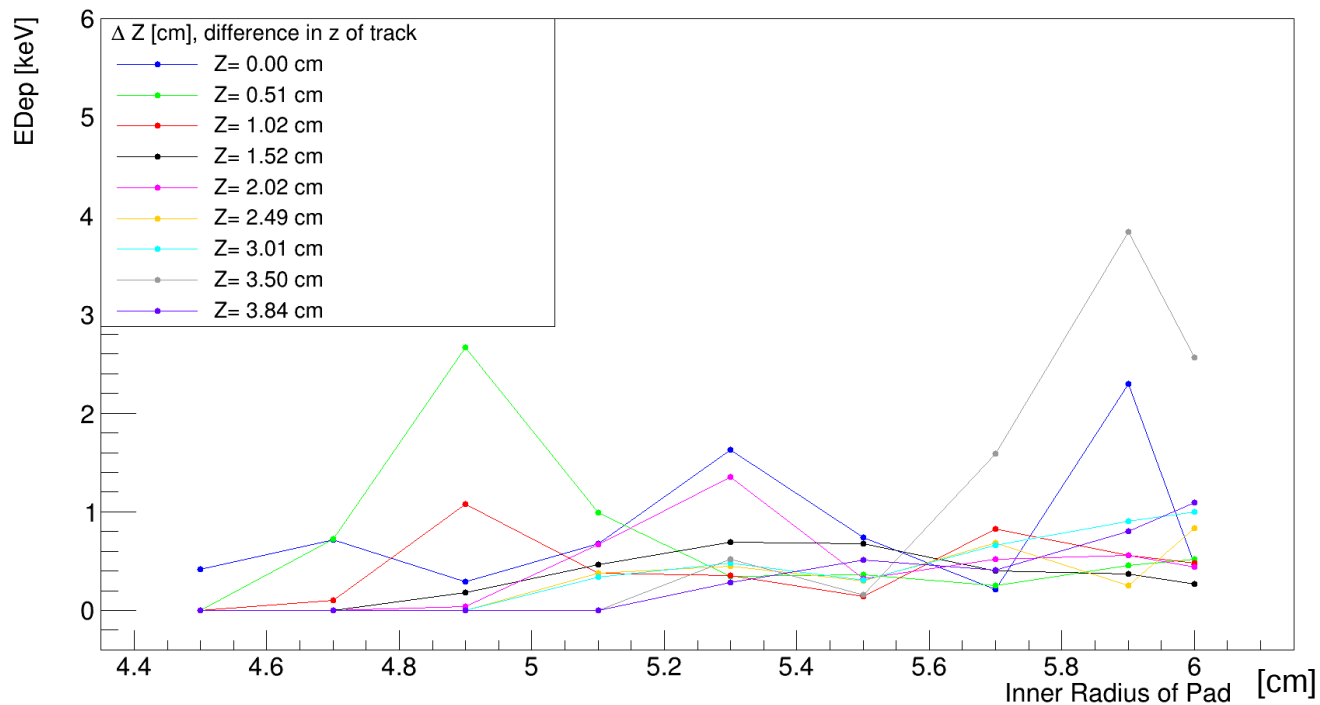
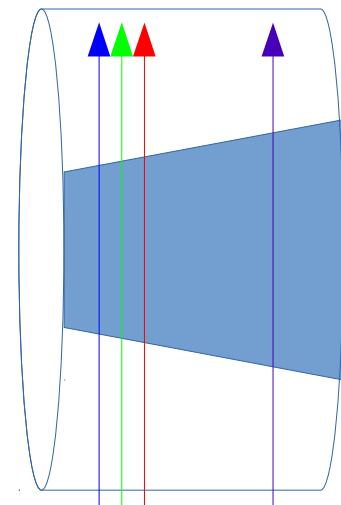
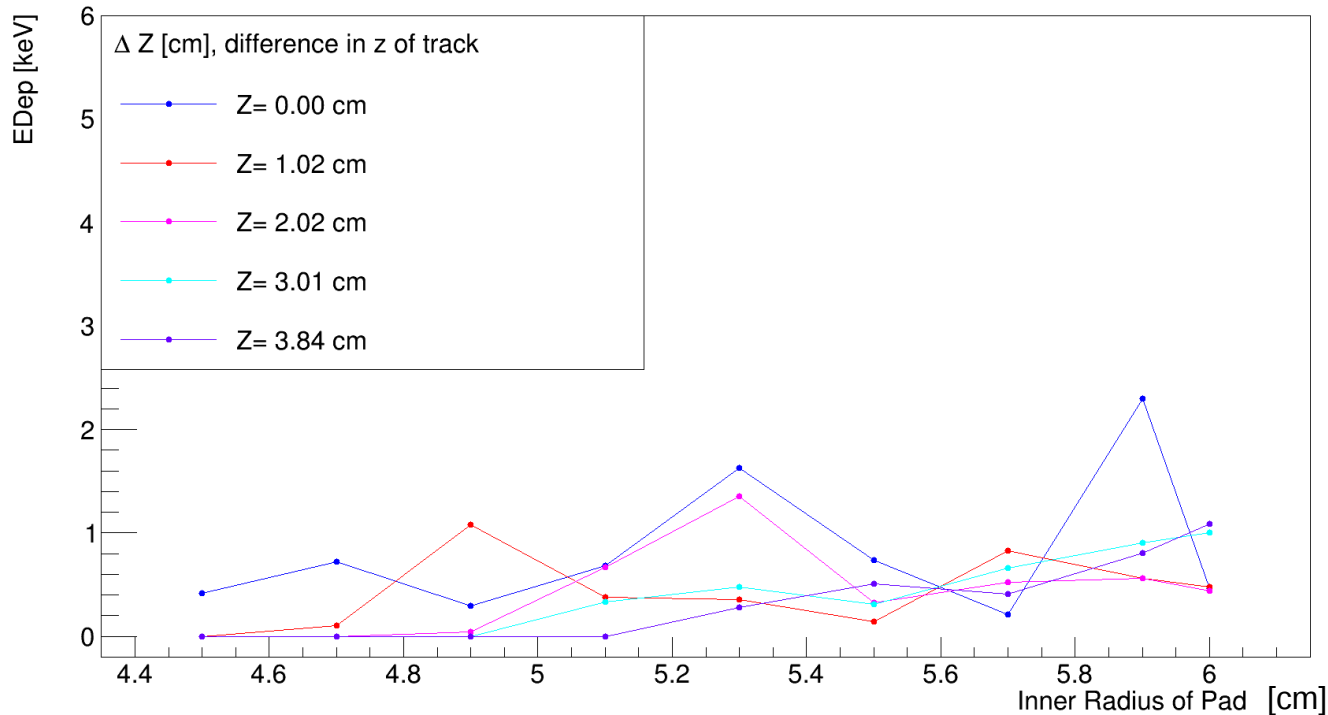
**100MeV/c
Mag Field
Off**

Edep in Pads as a Function of Track Z



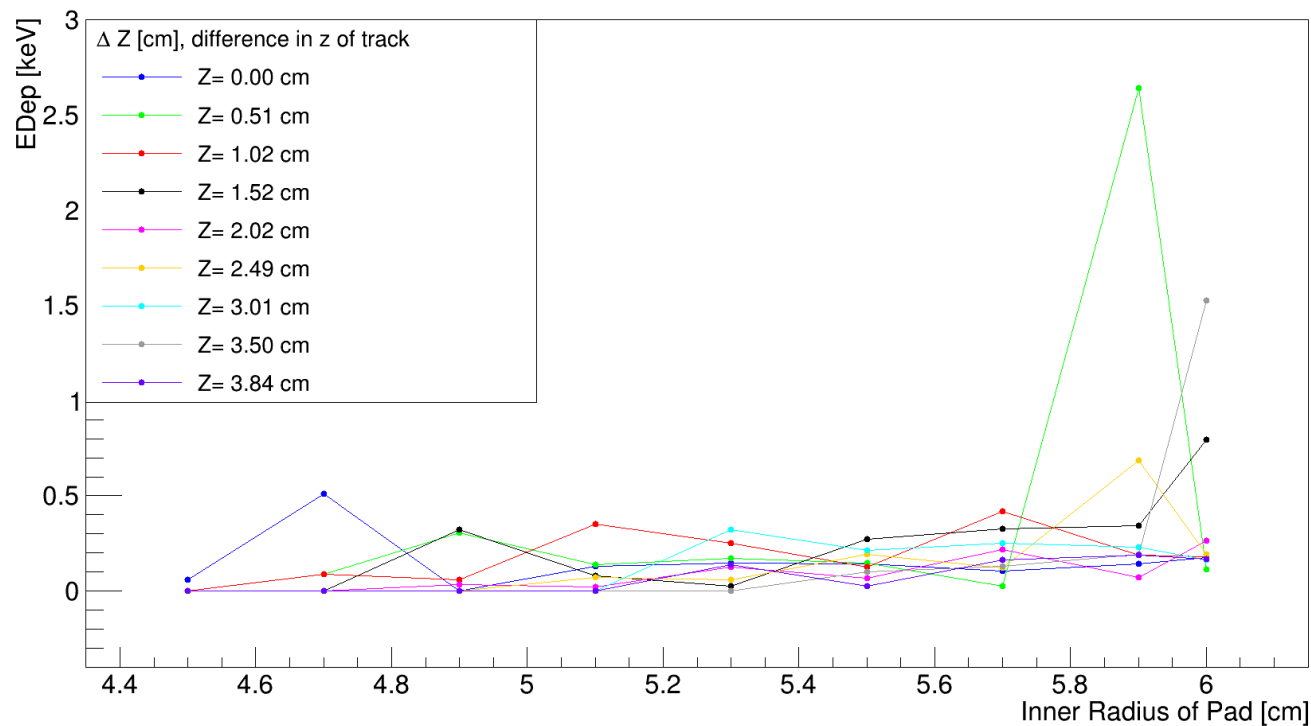
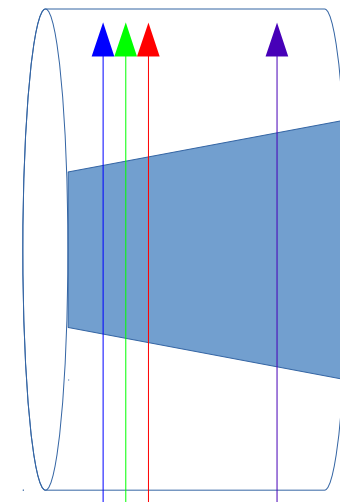
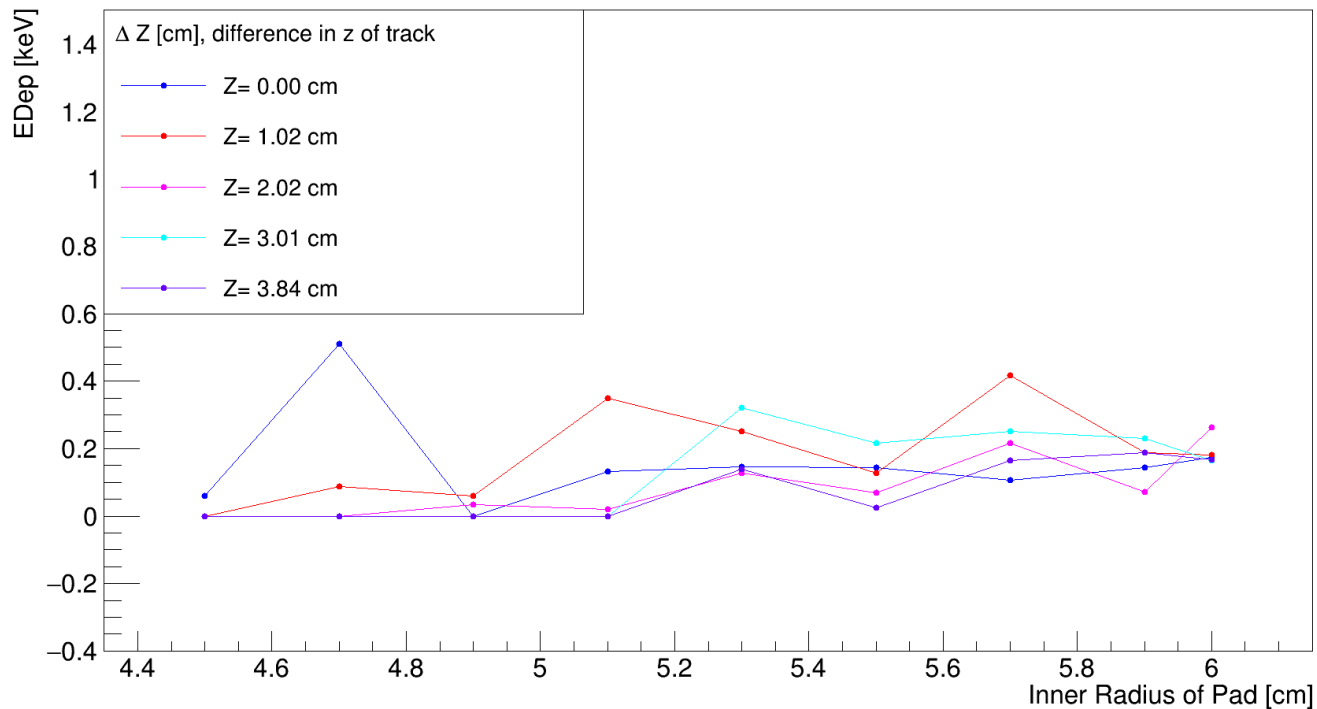
**250MeV/c
Mag Field
Off**

Edep in Pads as a Function of Track Z



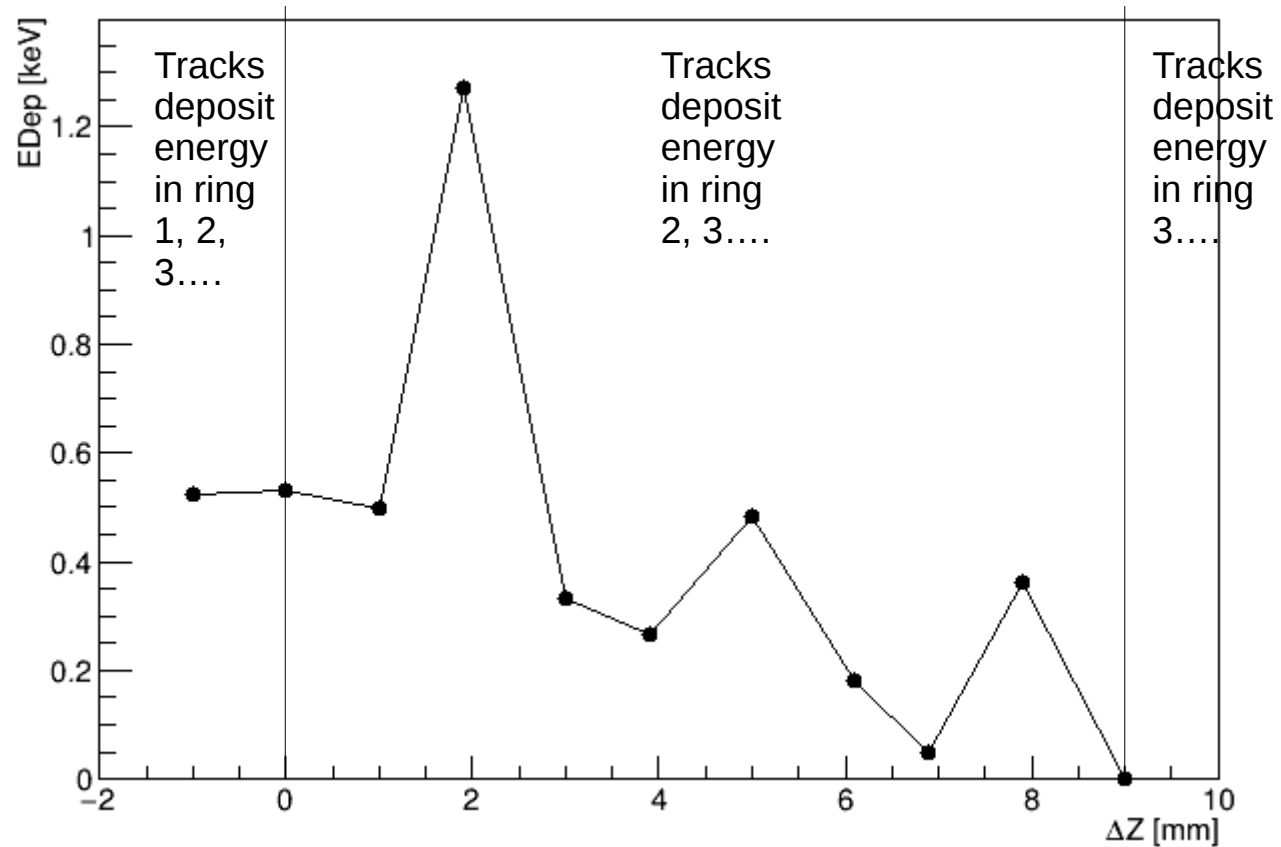
**400MeV/c
Mag Field
Off**

Edep in Pads as a Function of Track Z



Edep in Pads as a Function of Track Z

250MeV/c
Mag Field
Off



Z-distance from the z-position of the first track in a z-scan which does not deposit any energy in the inner most ring