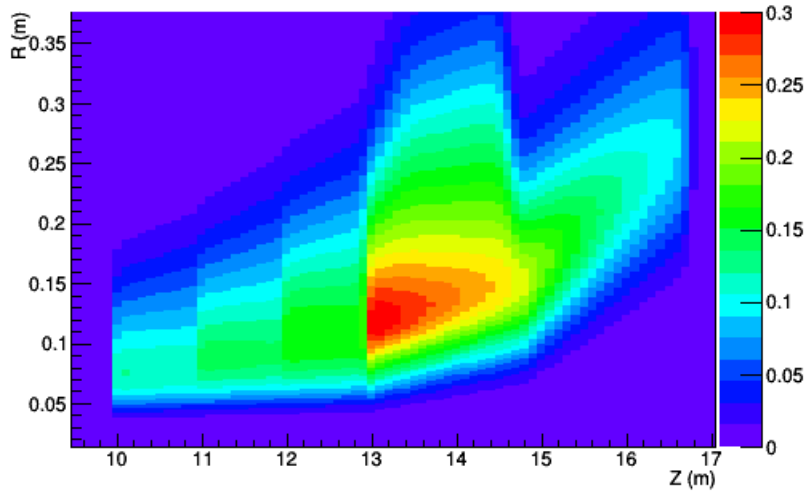
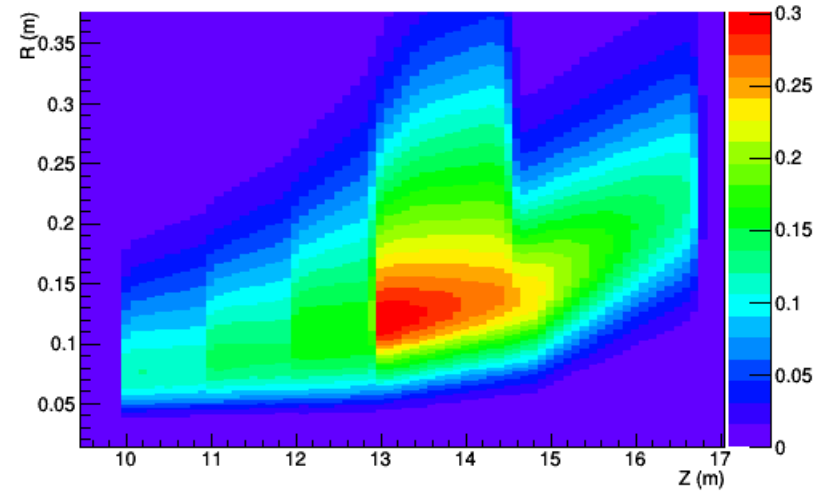


At  $\phi=0$  (center of open sector)

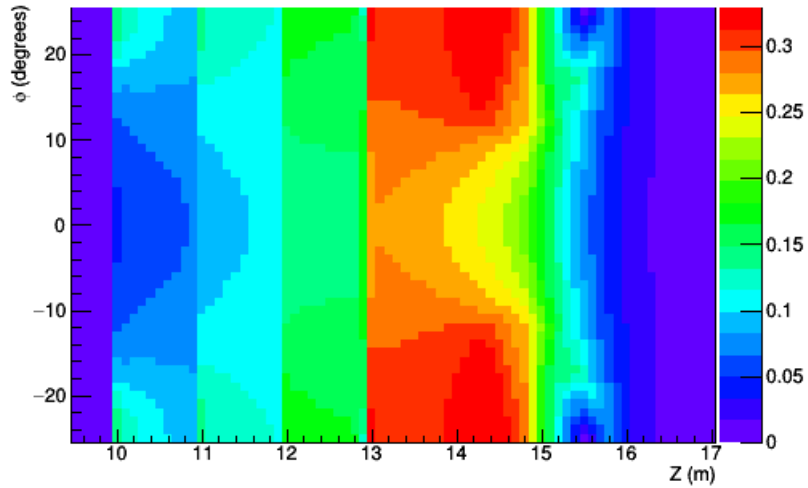
Total Field (Tesla), Tosca Model



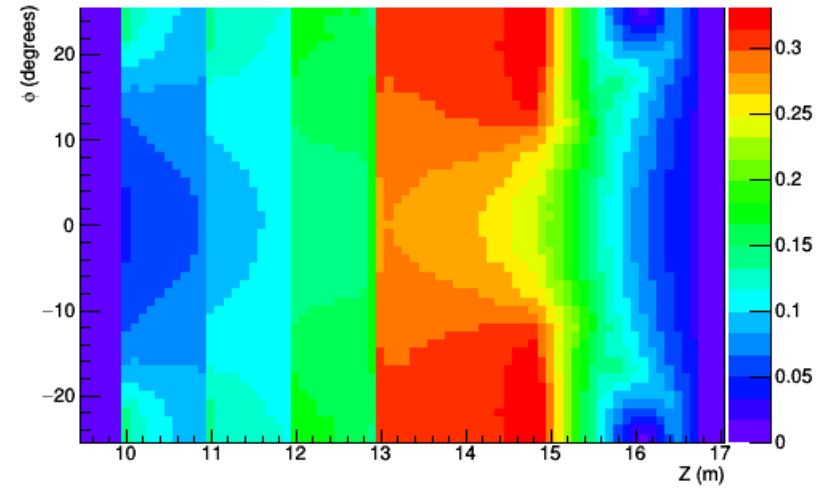
Total Field (Tesla), Maxwell Model



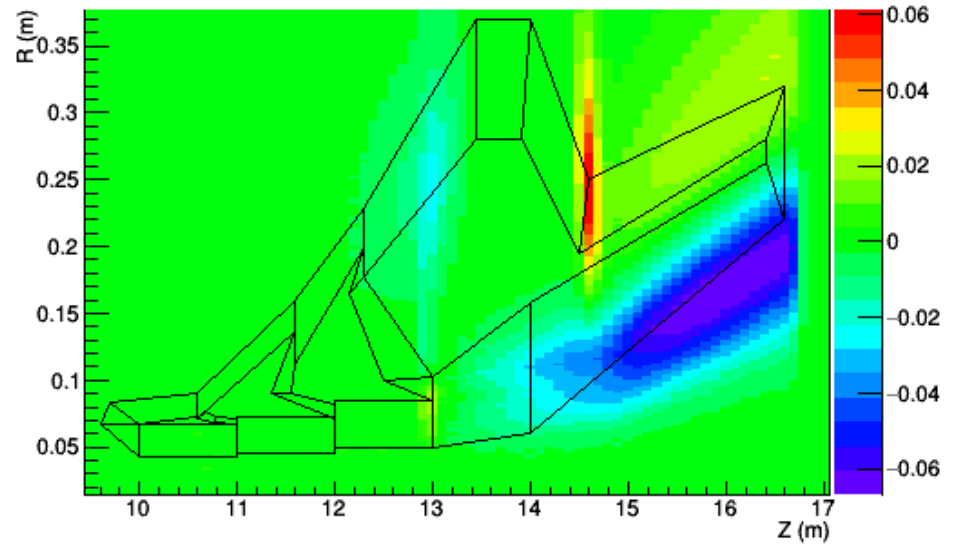
Total Field ( $\phi$ ) (Tesla), Tosca Model At  $r=14.1$  cm



Total Field ( $\phi$ ) (Tesla), Maxwell Model

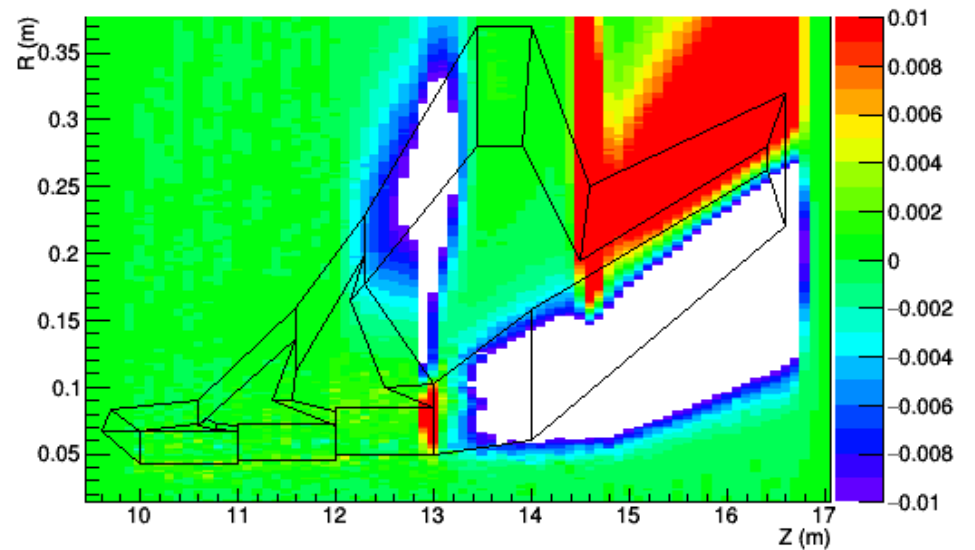


### Tosca-Maxwell



Total field difference  
At  $\phi=0$  (center of open sector)

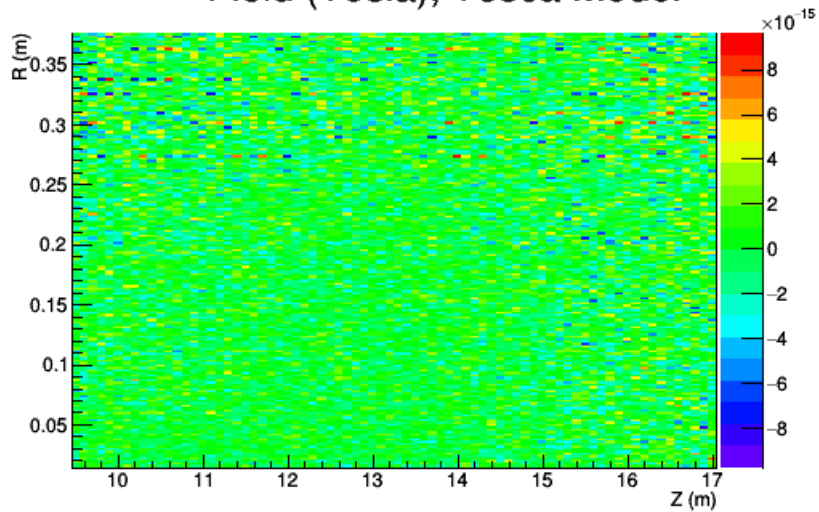
### Tosca-Maxwell



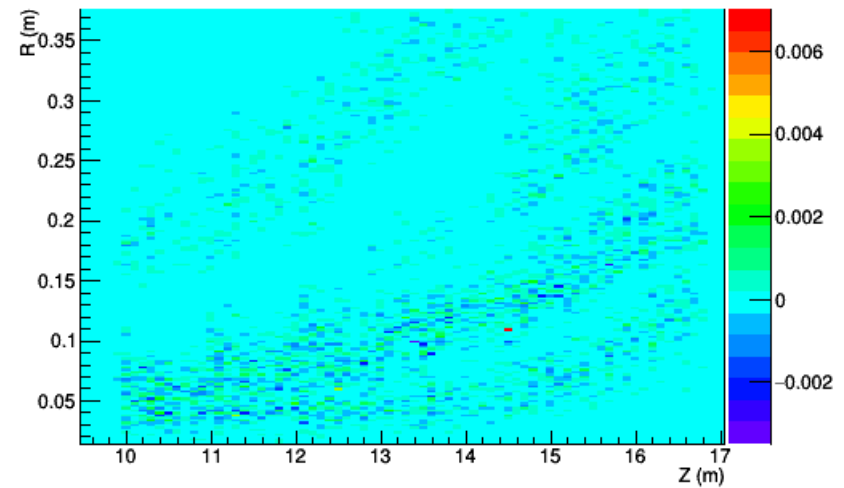
# Br components

At  $\phi=0$  (center of open sector)

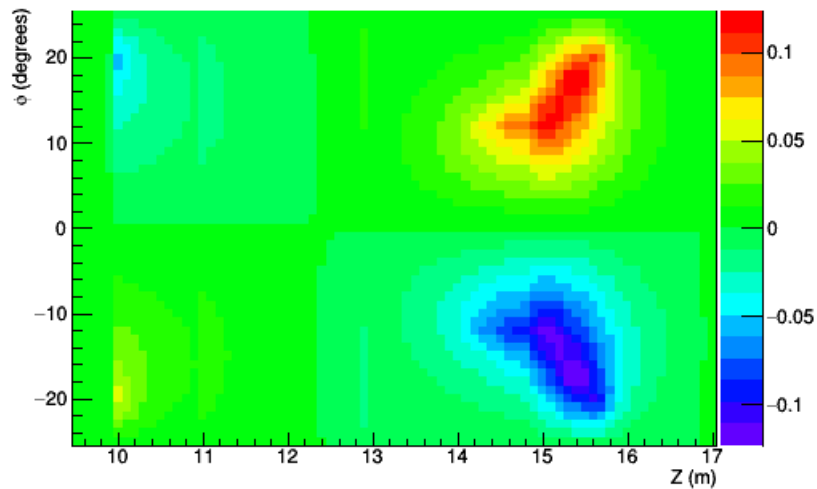
Field (Tesla), Tosca Model



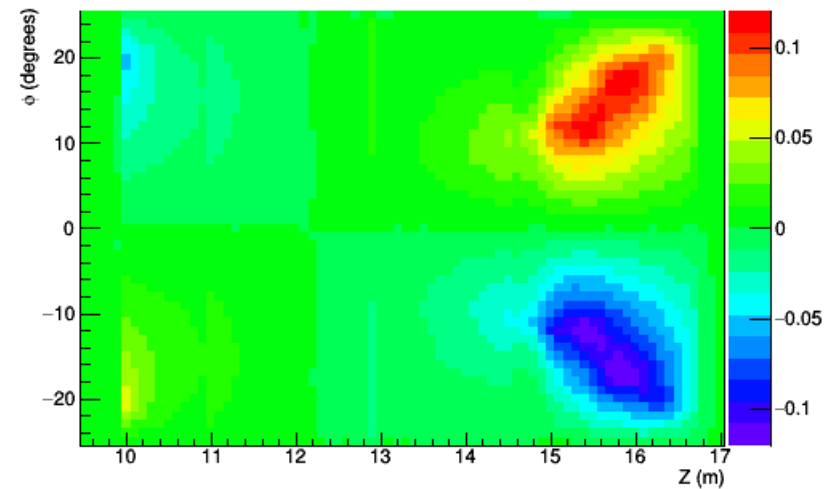
Field (Tesla), Maxwell Model



Field ( $\phi$ ) (Tesla), Tosca Model At  $r=14.1$  cm



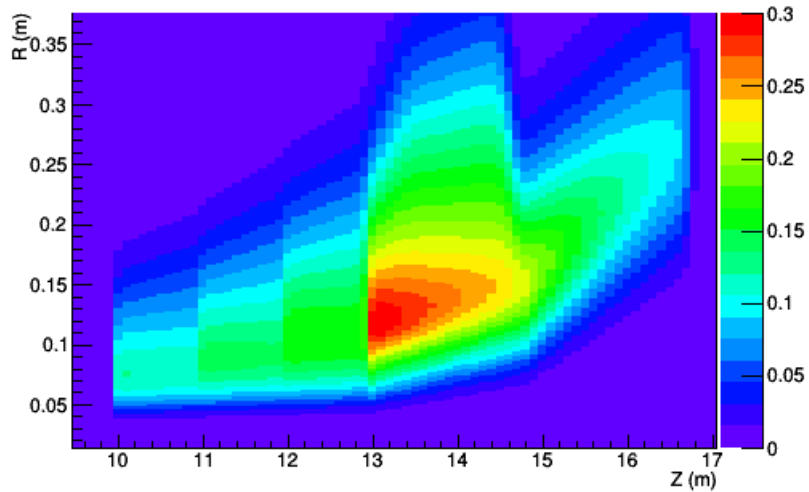
Field ( $\phi$ ) (Tesla), Maxwell Model



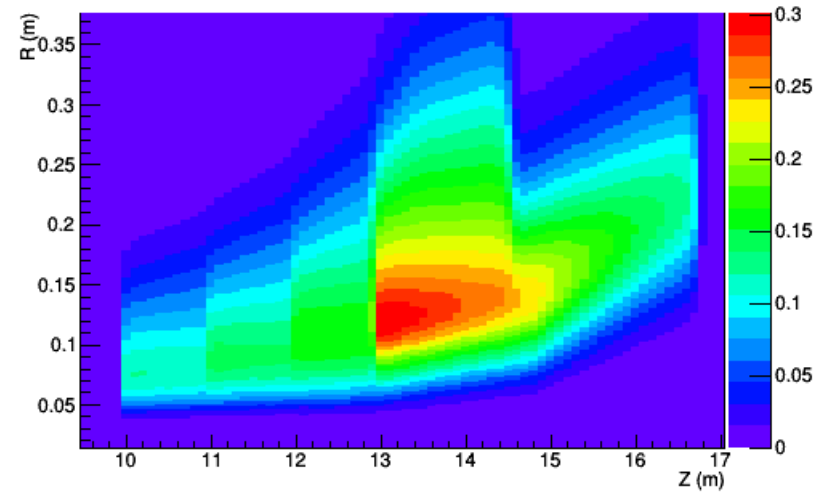
# Bphi components

At  $\phi=0$  (center of open sector)

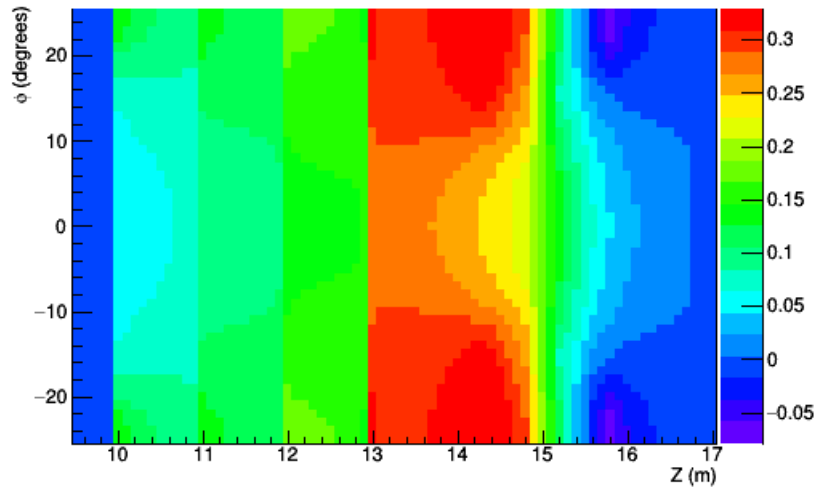
Field (Tesla), Tosca Model



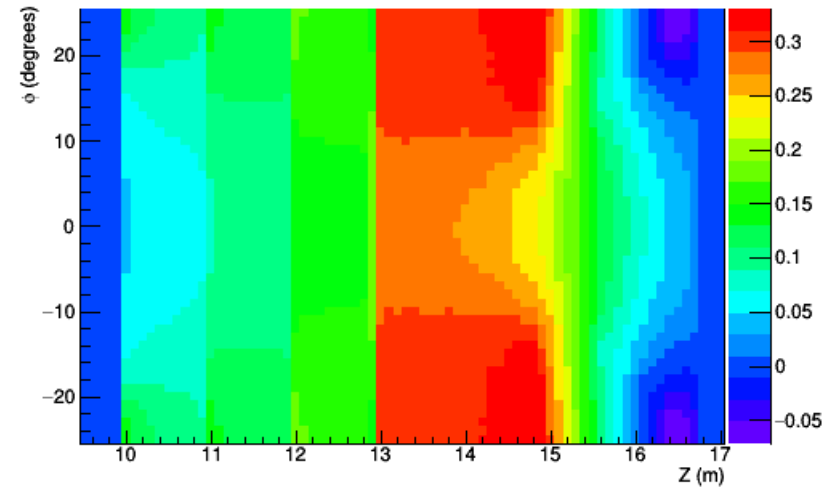
Field (Tesla), Maxwell Model



Field ( $\phi$ ) (Tesla), Tosca Model At  $r=14.1$  cm

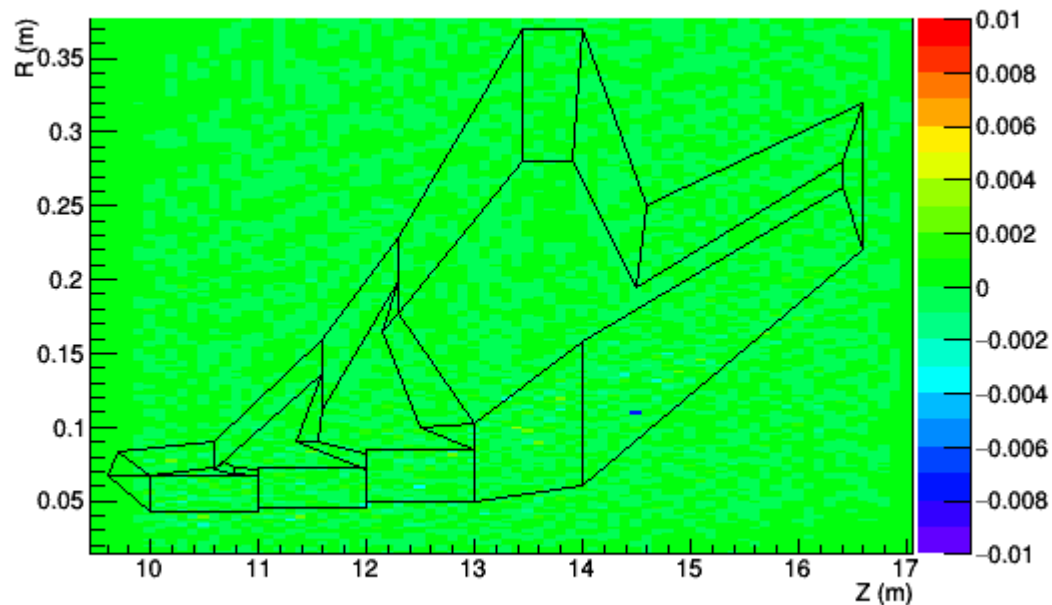


Field ( $\phi$ ) (Tesla), Maxwell Model



# Tosca-Maxwell

$B_r$  component difference  
(azimuthally defocusing)



$B_\phi$  component difference  
(radially focusing)

